



San Diego Mineral & Gem Society, Inc.
A Non-Profit Educational and Scientific Organization

THE POCKET PEGMATITE

JUNE 2016



MINERAL DIVISION

Jane Roush, Chairperson
Jim Parrish, Treasurer and Door Prizes
Friday, June 17, 2016
7:00pm, SDMG Bldg.

THE JUNE MINERAL MEETING welcomes **Bill and Sharon Griswold**, who just returned from Queensland, Australia. They will share their experiences while there, including a visit to the Opal mines in the Lightning Ridge area. Please bring your Opals for discussion and treats to share, the Club will supply coffee, tea, and punch.

Jane Roush
Mineral Division Chairperson



Official bulletin of the San Diego Mineral and Gem Society, Inc.

Affiliations: California Federation of Mineralogical Societies
American Federation of Mineralogical Societies
American Lands Access Association

Sister Club: Kingston Lapidary, Hull, England

Publication: *The Pocket Pegmatite* is published monthly (except July and August).

Submission

Deadline: 20th of the month prior to the publication issue.

Membership: Anyone with an interest in minerals, fossils, lapidary, gems, or hand-crafted jewelry may join the Society. Contact: membership@sdmg.org

Liability: The San Diego Mineral & Gem Society, Inc., is not and cannot be held responsible and liable for personal injuries, for damage or loss of property at any meetings, field trips, classes, shows, or any event sponsored or recommended herein.

Copyright: © 2016 San Diego Mineral and Gem Society, Inc. Non-commercial reprint permission given, unless otherwise noted, provided proper credit is given.

Street Address: 1770 Village Place
San Diego, CA 92101-1651

Mailing Address: P.O. Box 710783
(membership apps) Santee, CA 92072
attn: Angela Cannon

Phone: 619-239-8812

Website: www.sdmg.org

Editor: By committee, editor@sdmg.org

Layout, Advertising: info@sdmg.org

General Information: admin@sdmg.org

Change of Address: membership@sdmg.org

Exchange bulletins: Send to the Society mailing address

The mission of the San Diego Mineral and Gem Society, Inc., is to disseminate knowledge of mineralogy and earth sciences; to encourage the study of these subjects; to conduct classes in mineralogy and lapidary arts; to conduct field trips for the collection and study of specimens; to encourage interest in mineralogy and lapidary arts among young people; and to procure and maintain a collection related to the earth sciences and lapidary arts.



PRESIDENT'S MESSAGE

June 2016

THE SPRING BARBEQUE (Saturday, May 14th) was well-attended, and there were some great items in the **Silent Auction**. I would like to thank everyone who contributed to the success of the event, especially **Doug Peeler, Wayne Moorhead, Anne Schafer**, and all the other organizers and volunteers without whom the event would not be possible. As usual the event was a great success, and I enjoyed the food, of course! (Read **Anne Schafer's** review on pg 6.)

The **San Diego Fair** opens Friday, June 3rd. **SDMG's Treasurer Anne Schafer** and **Instructor Rich Yarbrough**, are Coordinator and Assistant Coordinator, respectively, of the Gems, Jewelry & Mineral Dept. They took in 330 entries this year. It is going to be a great Fair! (See pg 4 for details.)

The next event on the calendar after the summer is the **Gem Diego Show**, which will be held on the first weekend of November. I hope to see you all there.

The May **General Meeting** (Friday, May 20th) is always hosted by our Junior members, with **Junior Division** Chair **Lois Lukasky** in charge. It was

a wonderful night with door prizes galore, plenty of food, and an excellent speaker – **past SDMG President Garry Cannon**, who gave a presentation on how to identify Meteorites. The funds raised go to the **Junior** fund to support **Junior Division** activities, so I would like to thank everyone who attended for their support.

The **Annual General Meeting** will be held on Monday, 27th of June (NOTE! It will not be held on a Friday). It will be my last meeting as President (where has the last two years gone?), so I decided to give a short presentation myself before handing over the reins to the new incoming **President, Shirley Leeson**. I will be aided by one of my sphere class students **John Kruzel**. Strangely enough the topic will be "The Secrets of Sphere Making." I will reveal how to make a sphere that is more air than rock!

It is always a good place to acquire a few more rocks!

Paul Williams

SDMG President

sdmgpresident@sdmg.org



Paul Williams's award-winning case of spheres at the 2012 San Diego County Fair.

SDMG GENERAL MEETING

Monday, June 27, 2016

7:00pm, SDMG Bldg.

PAUL WILLIAMS will make a brief presentation on “The Secrets of Sphere Making” with the assistance of John Kruzel, who is one of Paul’s students. The election of a new slate of officers and directors 2016–2018 will be held (see the slate on pg 16). Please remember to bring a treat to share with the group, **SDMG** will provide coffee, tea, and punch.

**GEMOLOGICAL SOCIETY
of SAN DIEGO**

Monday, June 6, 2016

7:00pm SDMG Building

MEETING AGENDA includes Graduation celebration, Installation of New Officers, Pot Luck and Silent Auction.

You can join the **GSSD** mailing list at **SDMG's** sign-up page at: <http://www.gssd.rocks>.

**JUNIOR DIVISION NEWS**

Sponsored by
Lois Lukasky and Marvin Dillard

Hello from the Juniors!

WE HAD A GREAT TIME at the **General Meeting** that the **Juniors** hosted on May 20th. Thirty-five attendees came to hear our speaker, **Garry Cannon**. He gave a great presentation on “Identifying Meteorites.” He explained how to separate a meteorite from a rock.

The door prize drawings went very well. Thank you to everyone who contributed to the 52 door prize donations. Thanks to our participants, we had great refreshments to share.

The **San Diego Fair** at the Del Mar Fairgrounds starts Friday, June 3rd (see pg 4 for details), and the **Juniors'** display case has been installed. They can't wait for opening day. Make a note: they will be working at the sandbox on June 22nd. **Juniors** who are willing to work a

1 to 1 1/2 hour shift will receive free tickets to the Fair. Be sure to stop by and visit us at the sandbox on the 22nd.

The school semester will end with the last **Juniors'** class on Saturday, July 2nd. There will be up to six summer classes for the **Juniors** beginning July 16th. The cost to attend is the same as during the regular class sessions – it's a bargain at \$1.00 per class.

The Fall semester starts September 12th with the first **Juniors'** class scheduled for Saturday, September 17th.

Hope you all have a great summer vacation. Look forward to seeing you in the Fall, if we don't see you during summer school.

Lois Lukasky
Junior Division Chairperson



Important Exhibitor Information & Dates

Location: Del Mar Fairgrounds

2260 Jimmy Durante Blvd., Del Mar, CA 92014

West of the 5 Fwy., exit Via de la Valle

The Gems, Minerals & Jewelry Dept is located in the south side of the Mission Tower

First day of Fair: Friday, June 3. Hours: 4:00 to 11:00pm.

Exhibitor Appreciation Night: Wednesday, June 8. Hours: 7:00 to 9:00pm.

Closed Days: First four Mondays, and first two Tuesdays – June 6, 7, 13, 14, 20, 27.

Website: www.sdfair.com

by Anne Schafer, Coordinator

“**MAD ABOUT THE FAIR!**” is this year’s Fair theme, and you are welcome to dress up in Alice in Wonderland or Steampunk costumes, or a combination of both, and strut your stuff around the Fairgrounds. While you are out strolling, please do come to visit the Gems, Jewelry & Minerals Department to see some first-rate collections of gems, minerals and fossils, as well as unique jewelry designs.

The **Mineral of the Year** for 2016 is Minerals of South America. The **Fossil of the Year** is Ice Age Fossils. And just for this year, we have two new jewelry categories, based on the Fair theme: **Alice in Wonderland** –and– **Steampunk**.

Exhibits this year include: the always popular fluorescent mineral room, where the specimens literally “light up” under the glow of black lights; full cases of geodes and petrified wood; educational exhibits about chasing &

repoussé, casting, mica and more; and for something completely different, a case or two of artwork inspired by mineral specimens.

Demonstrations vary daily and include chain-making, gem faceting, and sphere making.



Free gem identification is provided by the **Gemological Society of San Diego (GSSD)** every Saturday and Sunday, between 11:00am and 4:00pm. Knowledgeable staff provide daily docent tours of the exhibits, and kids are invited to sift for treasures in the sand pile.



Volunteer! Get a free ticket to the Fair!

FREE PARKING AT HORSEPARK!

(Come early to get a parking spot.)

Gem I.D. ~ If you are a current or past member of the Gemological Society, or have a degree in gemology, have we got a job for you! The refractometers and microscopes will be out each weekend during the Fair, waiting for YOU! Please contact **Jim Porter** to sign up.

Faceting Demos ~ If you would like to show off your faceting skills to the public (and you know how to run an Ultra Tec...), please contact **Bob Hancock** to sign up:

Other Demos ~ Chain making, Fossil prep, Wax carving, Wire wrap, Bead stringing, and the list goes on. If you have a rock or gem related activity that does not involve an open flame, please contact Asst. Coordinator **Rich Yarbrough** to schedule your time slot:



SDMG members Jan and Meredith Kunsu took the First Place Award for metal work, overall design, and rock carving at the 2015 San Diego County Fair. Photo: Wayne Moorhead.

This year, there were over 330 entries. Come see all the entries from your fellow SDMG members and students.

.....

Info Booth ~ If you like interacting with kids of all ages, and would like to help them screen for a free rock in the sand pile, please sign up for a two-hour slot in the Info Booth. (You can bring a couple show'n'tell items, too, for fun.) Look for the signup sheets in the Casting Room, in the near future or contact Coordinator **Rich Yarbrough** to schedule your time slot:

It's going to be a great Fair again this year!

This 'n' That...

School Daze 2016

- The current semester ends Saturday, July 2.
- All classes will take a holiday week break from Monday, July 4 to Monday, July 11th.

Bored? Go See Gems, Minerals, Jewelry and Fossils at the Fair!

- Check with your instructor to see if they will be offering summer session classes in July or August.
- Fall Semester will begin Monday, September 12.
- The first Junior Division class will be on Saturday, September 17.

Membership Renewals Due July 1

Now is the time to start thinking about renewing your membership for 2016–17. The renewal form can be found at the end of this bulletin. Fill it out, print it and send it in with your check. Do it now, so you don't have to think about it later.

Remember, membership renewal fees must be paid before September to attend

2016 Ugly Rock Contest

by Anne Schafer, roving reporter

ON AN OVERCAST, drizzly and completely normal “May Gray” day at the **55th Annual SDMG Barbeque**, thirteen supremely ugly rocks were produced by their proud owners and entered in their own special contests.

Beautiful Ugly Rock Contest supervisors **Tom** and **Lucia Barckley** ran a clean election, making sure votes didn't blow away in the whirlwind that took out the Hostess Table canopy. Now, the anxiously awaited results:

Ugly Rocks. Just when you thought the taste level had bottomed out, so to speak, here comes **Paul Williams's First Place** unsightly rock, “Klingons” – also nicknamed “Butt Ugly.” Enough said! **Winnie Pike** clearly snatched petrified lips and teeth from an unsuspecting zombie after a dire struggle, taking **Second Place** with her entry “Ugly Teeth.” **Irv Beaman's** “Spike” pounded into **Third Place**, ahead of **Robert Bradley's** “Fred” and **Jenna Warren's** “Holio”.

Mimic Rocks are supposed to look like something – we don't actually care what – but should definitely be recognizable. No problem! **Jean Bradley** found this little leftover chunk of

crystalline gypsum glacier at a top secret desert location, winning **First Place** with “Ice.” **Juan Comer's** classy petrified Prada handbag had clearly been run over by a steamroller, so was downgraded to a “Valise.” But, did it win an award, you ask? Oh yes, my dear, **Second Place**. **Wayne Moorhead's** severed grotesque “Gooney Duck” clam foot received **Third Place** honors, just edging out **Bonnie Mackintosh's** “Burro Hoof,” **Jared Taylor's** “Wilson,” and **Juan Comer's** “Human Anatomy.”

Embellished Rocks are the most advanced category; not only must an ugly rock be found, it requires decoration! **Jean Bradley** struck again, or should I say “stuck again,” presenting a robustly round hole-istic rock full of straight pins on a cloth circle, to win **First Place** with “Pincushion.” Sharp idea! **Second Place** went to **Amber Tidwell's** “Bear Totem,” apparently a cross-section cut from a raging brown bear and shrunk down by nomadic head-hunter types, rendering it into a reduced, but still realistic, bruin.

Thank you all for participating and I hope your rocks made it safely home with you.

Report: BLM Field Tour (Lavic Siding)

May 20, 2016

by Lisbet Thoresen

June 1, 2016

KATRINA SYMONS is the Barstow **BLM** Field Manager who organized the progressive orientation tour of the newly created **Mojave Trails National Monument (MTNM)** on May 20th. Each stop focused on a different featured topic. The participants included the eleven **Desert District Advisory Council (DAC)** members and **BLM** field officers from Barstow, Needles, Palm Springs-South Coast, El Centro, Moreno Valley, and Ridgecrest. **Kris Rowe** organized a two-day rockhound round-up to coincide with the tour. In the afternoon, about 35 Rockhounds greeted the **BLM**-led contingent with placards and signs when they arrived at the main Lavic Siding site. Many of the signs were made courtesy of **Janelle Palmer** and **Dower Gervais** of the **Culver City Gem & Mineral Society**.

All told, 66 participants gathered to hear **Kim Campbell Erb** make the Rockhound presentation. **Kim** is an enthusiastic rockhound and former **DAC** member. **BLM** acting District Director **Tom Zale** presented **Kim** with an award in recognition of her service as a past **DAC** member and valued partner with the **BLM**. She has worked tirelessly on behalf of Rockhounds, and her collegial spirit working with the **BLM** has made her a respected and effective advocate.

During the presentation at Lavic, **Kim** introduced past presidents of the **California Federation of Mineralogical Societies (CFMS)**, **Jennifer Haley** and **Richard Pankey**, and past president of the **American Federation of Mineralogical Societies (AFMS)**, **Shirley Leeson**. **Shirley**, who is also **CFMS** historian and incoming **SDMG** president (2016–2018), explained for the benefit of the non-rockhound attendees what **AFMS** is and what it does: it is



Top. Rockhounds begin to assemble at Lavic with placards. **Bottom.** Shirley Leeson (center) addresses the crowd. Gathered around her are Tom Zale (far left), John Stewart (left), Kim Erb (center left), Jennifer Haley (center right), and Richard Pankey (right, looking down). Photos by Lisbet Thoresen.

a nationwide organization with a scholarship program for graduate students in earth science. To date, **AFMS** has given scholarships totaling more than a \$ 1.5 million to students.

Randy Banis, who is the **DAC** Recreation representative, exhorted rockhounds to write comment letters to the **BLM** about the **MTNM** Management Plan, so that rockhounding will

continue to be a permissible recreational activity within the new monument. To be effective, comments need to be very specific. Travelways and collecting areas should be identified with landmarks, coordinates, and annotated maps will be critical for preserving access to collecting areas. Both **Randy** and **Kim Erb** urged rockhounds to submit the **AFMS** and **CFMS Code** of Ethics into the record at the **DAC** meeting to be held in Barstow the next day.

There were posters, picture albums, and rough and cut specimens available to examine at Lavic, many courtesy of **Adam Dean**, aka the **Agate Hunter**, and his wife **Teresa**. Perhaps, nothing communicated quite so effectively why rockhounds are so passionate about their hobby than being able to see and to handle the beautiful material unearthed from the areas where the tour group was standing. For half the group, hearing the speakers talk about the material

where it is collected and having the opportunity to see it and pick it up was a revelation.

Adam is a past Field Trip Co-Chair of the **CFMS** and **Orange Belt Mineralogical Society (OBMS)** Federation Director. He has led field trips to the California desert for 35 years. With great depth of feeling, he spoke about his lifelong love of the desert and collecting. He talked about the values of the rockhound community and the importance of preserving those values for the next generation. He also drew attention to the significance of the unique material found at the collecting areas that are now part of the **MTMN**, noting that it has brought rockhounds from throughout the world to the Mojave Desert for many decades. It is the equivalent of a world heritage site for rockhounds.

Thank you to the tour organizers and everyone who came out to show their support of rockhounding.



Top. Bill Depue has been rockhounding in the Mojave Desert for 75 years. He brings some of the fine Cady jasp-agates he has collected to the display table. **Bottom.** The tour group looks at pictures and examples of rough and cut specimens which made the collecting areas in the Mojave Trails National Monument world famous. Photos by Lisbet Thoresen.

Top. Kim Erb addresses the crowd. Photo by John Martin. **Bottom.** Adam Dean brought pictures and specimens to share with the tour group. Here, he stands to the side to talk with Mike Ahrens, acting Field Manager of the BLM field office in Needles. Photo by Lisbet Thoresen.

Her Contribution Recognized

by Shirley Leeson

May 29, 2016

KIM CAMPBELL ERB burst onto the scene in 2010 asking what she could do to help stop the land grab of our Southern California Desert. She was a fresh breath of air and full of excitement, digging right in and attending the BLM's Desert Advisory Council meetings. These meetings, especially in 2010, were not for the faint of heart, but she continued going, asking questions, button-holing DAC members and BLM advisors and learning what the DAC was all about and their role in giving their opinions on all matters pertaining to the way the Desert was managed.

Let me go back and explain DAC – Desert Advisory Council. To make the public happy, the government decided to create a public forum, getting people from all walks of life who were interested in the desert together to speak on the issues surrounding the public lands in this Desert of ours. Those applying for a position had to be vetted and approved at the Department of Interior level in Washington, D.C. before being seated on the Council. The DAC includes: Recreation, Wildlife, two Elected Officials (usually from the surrounding counties), Renewable Resources, Non-renewable Resources, Tribal Interests, Renewable Energy Industry, Public-at-Large (three current members). Environmental Protection, Transportation/Rights of Way, Non-Renewable Resources, and an additional Public-at-Large position are all vacant.

There hadn't been anyone for some time representing rockhounds. We usually came under 'Recreation,' and that was dominated by the off-road people, who had been doing this for years and were very good at getting heard and their proposals accepted. Randy Banis, an off road supporter was on the Council as a 'Member-at-Large'. He supported Kim's



Acting Desert District Director Tom Zales presents Kim Campbell Erb an award for her dedication and service to the DAC. Photo by John Martin.

desire to be appointed. The length of time was surprisingly fast in government time (or you might say 'desert time'). After calling in favors from rockhounds all over to write letters of support, and from the off-road people, Kim was appointed on December 20th, 2011.

Kim served her time and was well-liked by her peers on the Council and the people she worked with at the various BLM offices. Because of personal reasons, Kim decided not to ask for a second term and resigned from the Council in 2015. But she stayed in touch with many of the people she had met during her tenure on the Council. (Note: with Kim gone, Randy Banis, our off-road friend took over as 'recreation' member). Kim set the tone on how the BLM and the DAC people perceive rockhounds. Because of her, we have a golden opportunity to be a part of the writing of the management of the three new National Monuments in our Desert, and we intend to play a part in that implementation that will include rockhounding for the first time at any National Monuments.

April, 2016. Things were happening so fast, a reporter from the *Los Angeles Times* wrote an article about the Aging Rockhounds not being allowed to collect in the desert because of the new Monument Status. But Senator Dianne Feinstein earlier had asked for our support of her desert bills, because she wasn't getting cooperation from the environmental community. After the article in the *LA Times*, a letter from Senator Diane Feinstein was sent to Sally Jewell, Secretary of the Interior, supporting rockhounding within the Monuments. And a letter came down from the California State BLM Director, Jerome Perez, stating that rockhounding would continue while a management plan for each Monument was being created and rockhounding would be included in the plan.

Kim was called to give a "rockhound" presentation to the DAC committee by Katrina Symons, Barstow Field Manager, at their field tour on May 20th. The tour group visited different areas within the Barstow office perimeter of the

Mojave Trails National Monument prior to the DAC meeting in Barstow, California, on May 21st. Kim's presentation was made at Lavic Siding, a popular collecting site. Word went out to rockhounds throughout Southern California. There was a huge turn-out, which blew everyone away. At the Lavic site, after Kim had spoken about Rockhounds – who and what we we're about – she was presented a special plaque by the acting Desert District Manager, Tom Zale, and Katrina Symons. It was a total surprise to Kim and well-deserved – showing the BLM's recognition of Kim's efforts on behalf of Rockhounds.

All of us at American Lands Access Association (ALAA) can't thank Kim enough and also her husband Jay, who totally supports her efforts, for going the long mile for all of us who love the desert and don't want to be "locked out."

Thanks, Kim Campbell Erb.

Hauser Geode Beds MOU signed, sealed and delivered

MUCH TO THE SURPRISE and delight of the Rockhounds present, the Memorandum of Understanding (MOU) for the Hauser Geode Beds was signed and received into the minutes during the DAC business meeting held in Barstow, California, on May 21, 2016. The MOU had been lingering since 2000. Meanwhile, the Hauser Beds were in jeopardy of being swallowed up in **Senator Feinstein's** wilderness bills. (The bills did not pass, so **Senator Feinstein** importuned **President Obama** to designate three National Monuments in the California deserts by proclamation, which he did on February 12, 2016.)

The MOU will keep Hauser Beds safe – for the moment. **John Martin**, President of the **California Federation of Mineralogical Societies (CFMS)**, and **Shirley Leeson**, Director and Ambassador for **American Lands Access Association (ALAA)**, signed the MOU on behalf of the Rockhounds. **Carrie Simmons** signed for El Centro BLM as **Tom Zale**, the El Centro Field Manager, looked on. There are conditions that we will have to meet to keep the MOU in force. View the final draft version of the MOU on the **SDMG** website at:

<http://goo.gl/sR6qyl> (short url)



Report: Desert District Advisory Council Business Meeting – May 21, 2016

by Lisbet Thoresen
June 1, 2016

The Meeting

THE DAY-LONG MEETING on May 21st was chaired by Leslie Barrett, who administered the agenda efficiently and with an equanimity that fostered a collegial atmosphere. Approximately 34 attendees were present, including BLM field officers. The BLM field offices in Barstow, Needles, Palm Springs-South Coast, and El Centro submitted reports, available online at: <http://goo.gl/cC3x48> (short url).

Discussions stayed on topic and the presentations engaged much interest and follow-up discussion. They included the Historic Route 66 Corridor Management Plan, the Palen Solar Project, and Bighorn Sheep.

Because the eleven DAC members represent different, sometimes competing interests in the California deserts, past meetings have sometimes been contentious. Several attendees on this day observed not only an absence of rancorous exchange, but also a notable degree of mutual expansiveness and civility. The most spirited comments related to three land use

management plans on the agenda: the West Mojave Supplemental Environmental Impact Statement (WEMO SEIS); the Desert Renewable Energy Conservation Plan (DRECP); and the Mojave Trails National Monument (MTNM) Management Plan.

Rockhounding in general, and in relation to the Management Plan for the MTNM, specifically, was not a scheduled agenda topic. However, Rockhounds were provided opportunity to speak during the morning session. Several Rockhound advocates had their comments entered into the official meeting record, including Kim Campbell Erb, Susy Martin, Jennifer Haley, Ruth Hidalgo, Shirley Leeson, and Lisbet Thoresen.

Land Use Management Plans

Several DAC members, notably Mark Algazy, public-at-large representative, and Randy Banis, Recreation representative, were critical of the timelines and procedures for drafting management plans. They criticized arbitrary timeframes for public comment on documents



The DAC members at the business meeting held in Barstow, California, May 21, 2016: (left to right) Mark Algazy, Nathan Francis, James Kenny, Al Muth, Randy Banis, Leslie Barrett, Tom Zale, John Benoit, Robert Burke, William "Billy" Mitchell, and Robert Robinson. Photo by John Martin.

of increasingly voluminous size and complexity. Mr. Algazy noted that BLM documents are written in turgid or technical language difficult for the average person to understand, which directly conflicts with the provision stipulated in the 14th Amendment. Mr. Algazy elaborated at length these points and difficulty of access to documents and relevant reports. Several DAC members excoriated BLM's habitual practice of contriving asynchronous timelines for drafting and reviewing management plans. Frequently, completion of studies or other reports needed to prepare a management plan post-dates the comment period deadline for the parent plan under review. In effect, it puts the cart before the horse.

The Council confronted precisely this problem when it contemplated creation of a MTNM Management Plan sub-group at the May 21st meeting. Barstow and Needles are the two principal offices responsible for administering the MTNM. A team has been assembled from the staff in the two offices to coordinate activities related to the new monument, with Mike Ahrens chairing temporarily until a Manager is designated. The sub-group reports to DAC, which in turn advises BLM. The activities of a sub-group must comport with BLM's Planning 2.0 initiative, which is still under development and perhaps months away from being finalized. Therefore, to avoid potential conflicts, some of which are semantic, the Council agreed to form an informal ad hoc committee. We hope an applicant steps up to represent the rockhounding interests. This topic segued into discussion about Planning 2.0 itself.

The putative objective of Planning 2.0 is supposed to draw upon the most current datasets available and to invite more public involvement in land use planning. Mr. Algazy pointed out that top-down administration from the Federal level contravenes its own mandate concerning the DAC's role in land management planning. Planning 2.0 does not appear to be a vessel for comity with the public when decision-making at all stages of the process by-passes local level input and instead arrogates it to Federal level authority. If anything, Planning 2.0 appears to dilute and discourage public participation, public scrutiny, or accountability to the public. If this gloomy impression, in fact, transpires in the coming months, it should surprise no one that the conflicting

values produced by overlaying Planning 2.0 and the WEMO SEIS onto the MTNM Management Plan may coalesce into a perfect storm of administrative dysfunction and public ire.

To head off a prospective bureaucratic squall, Mr. Banis proposed separating the WEMO Route Network Project (RNP) and Plan Amendment from the Management Plan for MTNM. The Council supported his motion. It is not clear whether or not it will survive a gauntlet of procedural conflicts. Both Stephen Razo, BLM Field Officer, and John Stewart, BlueRibbon Coalition Board Member, cautioned the Council on how it structured a dependent advisory panel and how it drafted recommendations.

Renewable energy projects

No fewer than ten renewable energy projects (solar, wind) are under development in the Desert District counties. Palm Springs Acting Field Manager Douglas Herrema presented a positive status update on the Palen Solar Project, which covers 4,000 acres located 60 miles east of Indio, near Joshua Tree National Park. The beleaguered utility has been under management of three successive owners. Each has gone bankrupt. The Palen design has undergone significant technological revisions of the mirror arrays and high-profile solar tower(s) to mollify critics who have challenged the project's deleterious impacts on the environment, the high cost of operation, and lower than expected generating capacity.

Palen's history repeats a familiar pattern for industrial-scale utility projects, particularly ones sited in the desert. To date, utility-scale projects in the desert have consistently over-promised and under-delivered. In its current incarnation, the solar panels at Palen will be curved "parabolic troughs" that concentrate sunlight on boilers mounted on a solar tower. The panels are touted as being less visually obtrusive and deleterious for birds that are maimed or killed when they dive into the flat panels (mistaking them for bodies of water). It is more difficult to put a positive spin on the profile of the proposed 750-ft. tower against the desert landscape. The heat irradiation produced by both the panels and the tower are also a problem. Reflected light is blindingly intense and panel temperatures reach 900 degrees. The heat emitted from towers at other facilities kill

thousands of birds annually, including golden eagles; although, the exact numbers are disputed by the industry, which is charged with self-monitoring and reporting avian fatalities. On May 19th, a fire erupted due to misaligned mirrors at the Ivanpah photovoltaic solar plant located at the Nevada-California border near Primm. The plant was off-line for several days. This latest problem is not encouraging for Palen. Like other plants, Palen's footprint on the desert floor will be scraped flat and the soil will be impregnated with consolidant so nothing can grow and rainwater cannot recharge the water table.

The responses to the Palen presentation were mostly sanguine. Leslie Barrett remarked that renewable energy technologies were continuously evolving. His comment prompted the author (LT) to comment for the record that the Palen project represented nearly 10-year old technology, while distributed energy has been gaining traction in preference to building industrial scale projects and power links in the desert. The author (LT) asked why, given the technological progress in recent years, the BLM had not entertained distributed energy generation solutions (rooftop solar/point-of-use energy generation) in the DRECP, especially in light of the scathing comment letters it received for excluding them.

DAC member Dr. Al Muth, who is a biologist, responded, saying he agreed about Palen, specifically, and distributed energy, in general. He observed that the Palen plant could not be sited at a worse location, because it blocks a critical sand transport corridor which affects not only local fauna, but also the desert ecosystem over a much wider area many miles away. He pointed out that the DAC was not given the option to recommend or comment about alternative plans not already included in the DRECP. He would have liked to, but financial opportunity values successfully drove the decision to exclude distributed energy options.

Rockhounds had the chance to comment in both the morning session and in the afternoon session, when WEMO SEIS and DRECP were discussed. Kim Erb thanked the BLM for the clear accommodation of rockhounding in the MTNM, which was [published on the BLM website](#) on May

13th. She asked the BLM to include in the final Management Plan clear language that guarantees it in the future. She cautioned that the accommodation is currently discretionary, so it can be revoked at any time. Similar comments by other speakers reiterated appreciation for the actions of the BLM during the interim period, and they all called for explicit language to protect rockhounding in the final Plan. The AFMS and CFMS Code of Ethics were entered into record.

Susy Martin recited a limerick by John Martin, a fitting comment on the solar energy presentation:

**“Rooftop solar in the city
keeps the desert clean and pretty.”**

The author (LT) submitted a comment letter on the MTNM on behalf of the San Diego Mineral & Gem Society. A copy of the letter is available on the SDMG website at:

<http://goo.gl/t7urKB> (short url)



Many of the members of the DAC and attendees at the May 21st meeting represent disparate constituencies with different concerns and priorities about land use rights. Historically, different values have been perceived as irreconcilable conflicting values, and they have been debated vigorously – the OHV group or rockhounds at odds with the environmentalists, for example. However, industrialization of the desert now looms as an existential threat to what desert preservation means to just about anyone who loves the desert. And just about everyone seems to recognize it.

It is fortuitous timing that the Council's present composition of temperamentally compatible and mutually respectful personalities, as well as that of some meeting participants, perhaps will ease some longstanding tensions. Several Rockhounds remarked on the palpable warmth and supportive tone they sensed during the DAC Field Tour and business meeting. It may make for unlikely bedfellows, but Rockhounds stand to benefit, especially if they are willing to reciprocate the same spirit of mutual regard they were shown at the DAC meeting in Barstow.

ON THE GO ... TO A SHOW



JUNE

3–5 LA HABRA, CA

NOC 2016 Show: 32nd Annual Jubilee of Gems & Jewelry

Venue: La Habra Community Center
101 W. La Habra Blvd., La Habra, CA 90631

Hours: Fri 5:00– 8:00pm;
Sat and Sun 10:00am – 5:00pm

Contact: Don Warthen, 562-330-8974
or odwarthen@verizon.net

Web: www.nocgms.com/show/show.html

Displays, dealers, spinning wheel, children's activities, geode cutting and demonstrations of wire Wrapping lapidary, faceting and carving. Hourly drawings and Grand Prize on Sunday at 3:30pm.

4–5 GLENDORA, CA

Glendora Invitational Gem & Mineral Show

Sponsor: Glendora Gems & Mineral Society
Where: Goddard Middle School Gymnasium
859 E. Sierra Madre, Glendora, CA 91741

Hours: Sat, 10:00am–5:00pm
Sun, 10:00am–4:00pm

Admission: Free.

Contact: Bonnie Bidwell, 626-963-4638
or Ybidwell@aol.com

25–26 CULVER CITY, CA

54th Fiesta of Gems

Sponsor: Culver City Rock & Mineral Club
Where: Culver City Veterans Memorial Aud.
4117 Overland Ave., Culver City, CA 90230

Hours: Sat 10:00am–6:00pm;
Sun 10:00am–5:00pm

Admission: \$7.00 (weekend pass);
children under 12 free; parking is free.

Contact: Janice Metz at janicemtz@yahoo.com

Website: www.culvercityrocks.org

Club displays and exhibits, Kid Zone, craft demonstrations, book sales, tool dealers, 30+ gem and jewelry dealers, free hourly door prizes, grand prize raffle.

JOHN E. GARSOW gems & minerals

June 4–5

Glendora Invitational Gem & Mineral Show

Glendora, CA
Goddard Middle School Gym

Facet Rough • Cabbing Rough
Jewelry • Mineral Specimens

www.johngarsow.com



25–26 JULIAN, CA

Julian Gold Rush Days 2016

Sponsor: Julian Chamber of Commerce

Venue: Julian Mining Company
4444 Hwy 78, Julian/Wynola

Hours: 10:00am – 5:00pm

Contact: Gina at 951-312-9940
or Tracy 760-803-4377

Website: www.juliangoldrushdays.com

Historical encampments (with a chance to meet miners, mountain men & cowboys!), gun fighting, reenactments & mock claim jumping, tomahawk throwing demonstrations, gold panning. The old fashioned mining camp will offer, vendors, an arts & crafts market, food & drink, gem mining, children's pioneer games, free parking & plenty of family fun. Adults

\$3.00 adults, Kids 12 and under free. Scavenger Hunt: Be on the lookout for the “golden nugget” and participating stores. Julian Train & Gold Mine Tours will be offering a very special train ride - call (760) 765-2288 for reservations. Julian Doves & Desperados Historic comedy skits at 1:00pm, 2:00pm and 3:00pm located in the stage area between Julian Fitness Center & the Julian Market & Deli. For information call (760) 765-1857. Eagle and High Peak Mine and Museum offers daily tours of the mines from 10:00am to 2:00pm. Adults \$10.00 and children \$5.00. Gold panning and museum included in the price. For more information, call (760) 765-1857.

AUGUST

3–14 VENTURA, CA

Ventura County Fair:

**A County Fair with Ocean Air
Gems, Jewelry & Mineral Dept.**

Venue: Ventura Fairgrounds
10 West Harbor Blvd., Ventura, CA 93001
(at the corner of Harbor and Figueroa)

Hours: 11:00am – 10:pm daily

Contact: Superintendent Diane Cook
(805) 889-1209 or (805) 648-3376 x 173
or gemsandhobbies@venturacountyfair.org

Web: www.venturacountyfair.org
(entry guides/classes/rules)

**Submit Your Competitive
and Non-Competitive Entries**
reservations required to enter

Contact: Superintendent Diane Cook
(805) 889-1209 or (805) 648-3376 x 173
or gemsandhobbies@venturacountyfair.org

Reservations accepted: June 4–20, 2016,
9am–7pm

Entry Delivery Dates: Fri, July 22, Sat, July 23
and Sun, July 24, 2016

Entry Delivery Time: 10:00am to 5:00pm
Fair cases and spaces for personal cases are limited. You must have a Pre-Reserved Confirmation to enter. Single specimens, cases, jewelry, beading, silver smithing – there is a Division and Class for everyone! Share with the public the great treasures we all enjoy.



77th ANNUAL CALIFORNIA FEDERATION SHOW & CONVENTION

*Sept 16–18, 2016
Placerville, California*

“Strike Gold!”

**El Dorado County
Fairgrounds**

100 Placerville Dr., CA 95667

eldoradomineralandgem.org

Admission: Adults \$12.00, Children (5–12) and Seniors \$9.00, Children under 5 w/ paying Adult and Super Seniors (100+) are FREE.

Parking: \$10.00 per car. (Fairgrounds parking is limited; free shuttle service available to satellite lots.)

This year’s theme is “A Country Fair with Ocean Air.” The Gem & Mineral Dept. will feature competitive and non-competitive exhibits, and every day demonstrators will show off different lapidary materials and jewelry/lapidary techniques. A different entertainment act every day, plus P.R.C.A. Rodeo on Saturday and Sunday (13th and 14th).

2016 – 2018 SLATE
SDMG OFFICERS AND DIRECTORS

The Nominating Committee has selected the following slate of four (4) officers and sixteen (16) directors for the two-year term from July 1, 2016, to June 30, 2018. This slate satisfies the requirements of the San Diego Mineral and Gem Society Bylaws in that the people named are members in good standing and have agreed to be nominated.

For President: Shirley Leeson

For Vice-President: Jim Parrish

For Secretary: Ellen Riceman

For Treasurer: Anne Schafer

For Board of Directors:

Andy Anderson Wayne Moorhead

Donna Beers Sally Parrish

Rocio Bergum Doug Peeler

Tim Bickford Dave Smith

Garry Cannon Dee Smith

Bob Hancock Jennifer Stapp

John Kruzell Paul Williams

Lois Lukasky Jill Williamson

No petitions for alternate candidates were received at the May 16, 2016, Board of Directors meeting, the deadline for submitting such petitions.

In the absence of petitions for alternate candidates, the above nominations will carry forward to the General Meeting in June, where they will stand.

– Jim Parrish, Chairman, Nominating Committee

WANTED
DEAD OR ALIVE
BARK BEETLES
for causing
Sudden Oak Death



Photo: G. Arakelian

The *Western Oak Bark Beetle* and its accomplices, *Oak Bark Beetle*, the *Goldspotted Oak Borer*, and the *Polyphagous Shot Hole Borer* have been marauding the countryside, and in a widening swath of destruction they've been killing California natives – the coast live, canyon live, and black oak.

The beetle rampage is spreading a pathogenic fungus that causes foamy bark canker disease, which is fatal!

This nefarious gang of pests is spreading across the state by hiding out in firewood.

~ **Be on the lookout** ~

Don't transport firewood.
Use firewood locally.

Learn how to spot
these dangerous pests.

www.dontmovefirewood.org

SDMG BOARD MEETING HIGHLIGHTS**May 16, 2016**

In attendance: President Paul Williams and Board members Andy Anderson, Donna Beers, Rocio Bergum, Tim Bickford, Garry Cannon, Bob Hancock, John Kruzal, Shirley Leeson, Lois Lukasky, Wayne Moorhead, Jim Parrish, Doug Peeler, Ellen Riceman, Anne Schafer, Dave Smith, Dee Smith, Jennifer Stapp and Jill Williamson. A quorum was present. **Excused:** Sally Parrish. **Guest:** Letty Evans.

Juniors: Lois Lukasky stated that the Juniors' hosted General Meeting on May 20 would have lots of food, fun and door prizes.

Membership: Garry Cannon reported the addition of 15 new members since last month's report, including 1 new Junior, bringing the total to 794. [Correction to total from last month.]

School Director: Wayne Moorhead reported that a second diamond wheel was ruined in the Lapidary Shop; the Foredom brushes were replaced; two new 18" saw blades purchased; a new buffer cover installed in the Silver Room. Wayne planned to stock up on oil, sandpaper and paper towels for summer classes. Please let Wayne know if your classes will run over the summer. The hydraulic press is to be purchased this week; announcement about training classes to follow. Rocio Bergum requested purchase of 2,000°F gloves for use with casting oven. Jill Williamson requested that 1-2 rolls of paper towels be kept in unlocked supply cabinet. Bill Brisebois needed building key & alarm code.

Field Trips: Shirley Leeson said the CFMS will review "no field trips until new National Monument rules in place" policy at June executive meeting.

CFMS: Shirley Leeson announced that the combined AFMS/CFMS Show for 2017 will be held nearby, at the Ventura Fairgrounds, with dates TBD. Show Committee: Next meeting: Monday, July 18.

Museum Curator: Jim Parrish accepted the donation of a complete set of Mineralogical Record, to be delivered via the Tucson Show in 2017.

Donations: (1) Motion carried to assign the \$325 donation from United Way/Bridgepoint to the Museum. (2) Hal & Treba Scott donated two

truckloads of lapidary rough, plus a display case and sluice box. (3) Shirley Leeson donated 37 issues of Gems & Gemology. (4) A rusty 18" slab saw was donated. (5) Donna Beers donated some Four Peaks amethyst to the Juniors. (6) Dee Smith and Jill Williamson also made donations to benefit the Juniors.

Website: Motion carried unanimously, authorizing Lisbet Thoresen to move the SDMG website to a better server, to purchase secure software, and to update the website to handle mobile devices, with costs NTE \$1,200.00.

Public Lands: Motion carried unanimously to approve three letters drafted by Lisbet Thoresen about rockhounding on three new desert national monuments, to be signed by the SDMG President.

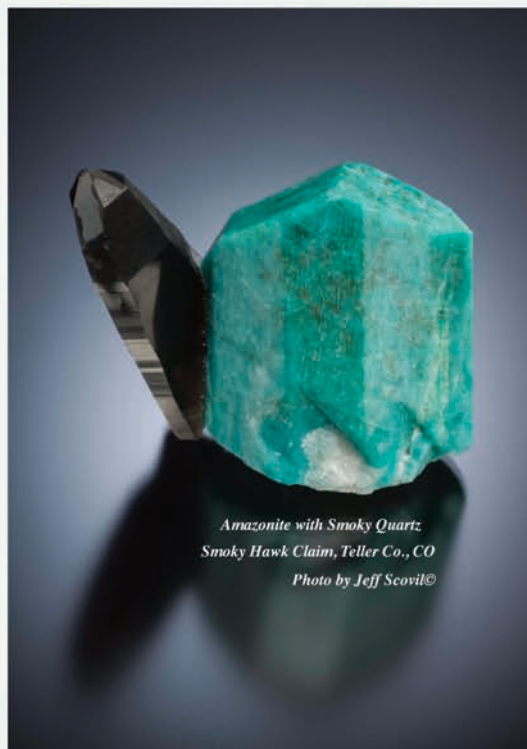
BBQ: Doug Peeler reported everything went well. Silent Auction brought in \$3,910.65 and the net profit for the event was \$2,745.91.

New business: Dave Smith explained that most banquet venues had prices from \$40 to \$48 per person, and that the Banquet Committee had visited and rejected The Butcher Shop, Elijas, Casa Machada, The Marina Village Rooms, The Town and Country (and other Mission Valley and Mission Bay hotels), the Admiral Kids Club and other venues at the Navy Sub Base, plus Vacation Village. Numerous contacts of additional venues by phone and the internet also yielded prices starting at \$40 per person. The Banquet Committee has located one caterer, Bill Major, approved for the Soledad Club venue, who charges \$19 per person, and is researching the possibility of using other caterers. SDMG could supply cake, pies and cheesecakes for dessert. Selling 70 tickets at \$35 per person could fund most of the event. A more complete proposal was requested for presentation to the Board at the June meeting, and further discussion was tabled.

(Any member may attend Board meetings. The next one is June 20th at 7pm in the SDMG Building.)

WEST COAST ~ FALL GEM & MINERAL SHOW

A-Z Jewelry Supply by MajestaM
African Arts & Minerals
Antero Minerals & Jewelry
Barlow's
Barrett, Owen, Gems
Bolva Group, Inc.
Cam's Crystal Gallery
Campbell. Prentiss
Capistrano Mining Co.
Cinderhill
Cut Edge Gems
Deal OK
Dragon Minerals
Dynamic Energy Crystals
Earth's Treasures
Eidos
El Paso Rock Shop
Empire Gems International
Exotic Minerals of Russia
Felipe Barrera
Fenn's Gems & Minerals
Five Lions Gems
Fossils Inc.
Freedom Valley Gems & Minerals
Garrow, John E., Gems & Minerals
Gem Nest & Minerals
Gemstone Material Interiors
Gochenour's Minerals
Golden State Gem & Mineral
H.R. Marble Lights
IC Minerals
J-K Stone Company
Jewel Pledge
Jewel Tunnel Imports
Johnson, Ed, Co.
Joyoung International Corp.
King Mike Mining Inc.
Kristalle
Krystal Light Imports



*Amazonite with Smoky Quartz
Smoky Hawk Claim, Teller Co., CO
Photo by Jeff Scovil©*

Lasco Diamond Products
Loomis Minerals
Madagascar Import SEAM
Malachite & Gems of Africa
Maura's Treasure Box
Midwest Minerals
Miner's Kingdom
Mineral Treasure-Madagascar Gemstones
Minerallity
Moroccan Fossils & Minerals
Moroccan Stones
Nature Little Stone
New Era Gems
New Horizon Studio
Olson, Donald K. & Associates
Opex Opal
PaleoFacts
Piratas de Navajun
Rhodo Co.
Rock N Spheres
Samstone, Inc.
Seibel Minerals
Silver Egypt
Sister Stones
Slavic Gifts
Starborn Creations
Terra Firma Minerals
The Obsidian House
Todd Schowalter Fossils
Top-Gem Minerals, Inc.
Tucson Todd's Gems
Unite ZYL Int'l, Inc.
Usman Imports
Vance Gems
Wolfe, Tom Minerals
Wonderworks
XTAL - Dennis Beals Minerals

NOV. 11 - 13, 2016

Hours: Fri. & Sat. 10 - 6 ★ Sun. 10 - 5

SANTA ANA, CA
Holiday Inn - Orange County Airport,
2726 S. Grand Ave., (take 55 Fwy Exit 8 for Dyer Rd. to S. Grand Ave.)

80 Top Quality Dealers

Minerals ★ Fossils ★ Gemstones ★ Jewelry ★ Beads ★ Decorator Pieces ★ Meteorites ★ Lapidary ★ Metaphysical

FREE ADMISSION ★ FREE PARKING ★ WHOLESALE ★ RETAIL

LLD Productions, Inc., P.O. Box 665, Bernalillo, NM 87004, Fax: (303) 223-3478, mzexpos@gmail.com

wwwmzexpos.com

facebook.com/mzexpos



San Diego Mineral & Gem Society, Inc.

A Non-Profit Educational and Scientific Organization

Membership Information:

Interested in minerals, fossils, lapidary, gems,
or handcrafted jewelry? We are, too!

Adults (18 and older): \$30.00

Second adult, same address: \$10.00

Junior (under 18): \$10.00

Membership application forms
are available on-line at www.sdmg.org,

and at the Village Silversmiths Shop
in the SDMG Building,

or by contacting the SDMG Membership Secretary
membership@sdmg.org

or by writing to her at:

San Diego Mineral & Gem Society
attn: Angela Cannon
P.O. Box 710783
Santee, CA 92072

Please allow up to 3 weeks for processing your application

MAKE CHECKS PAYABLE TO:

San Diego Mineral and Gem

SDMG BADGES:

Order for just \$7,
payable in advance
from Simon King or Gladys Walker



SAN DIEGO MINERAL
& GEM SOCIETY

YOUR NAME

Magnetic back comes standard. If you have a pacemaker, please
request the pin back. You may pick up your completed badge at a
Friday night meeting.

SDMG CLASSIFIED ADS

OCEANVIEW MINE TOURS & SCREENING TRIPS:

Sundays, 11:00am to 3:00pm.

For more information,
please visit www.digforgems.com

or call Jeff Swanger at (760) 415-9143

Reservations required.

\$60 per person. Family rates available.

HIMALAYA MINE TAILINGS:

Thursday-Monday, 10:00 am to 3:00 pm.

At the Lake Henshaw Resort on Highway 76.

Adults, \$75 per day. Kids 12-15, half price.
Screening tables, buckets, and shovels provided.

Call (775) 830-5797

or (775) 772-7724 for more info

Website:

www.highdesertgemsandminerals.com/

WEBSITES

SDMG:

www.sdmg.org

CFMS:

www.cfmsinc.org

AFMS:

www.amfed.org

PUBLIC LANDS:

www.amlands.org

BLM:

www.ca.blm.gov

BOB'S ROCK SHOP:

www.rockhounds.com

MUSEUMS:

www.sdnhm.org

www.nhm.org

www.amnh.org

www.mnh.si.edu

www.gia.edu



CLASS SCHEDULE – 2016

REGISTRATION IS REQUIRED BEFORE ALL CLASSES.

You must contact the instructor before attending any class to find out when the class starts and ends, if special materials are required and whether you qualify to attend. Fee is \$5.00 per class; it is usually easier for instructors if payment is made for a full month; cash or checks only, please. ***Classes are open to members only*** and students must read and follow the **School Rules** available in the classroom and at:

<http://www.sdmg.org/class-schedule/school-rules.pdf>

CABOCHONS	Tue	7 – 9pm	Wayne Leibitzke	
	Wed	9 – 11:30am	Jim Claypool	
	Wed	12:30 – 3:00pm	Jim Claypool	
	Wed	7 – 9pm	Andy Anderson	
	Thu	7 – 9pm	Jon Evans	
FACETING	Tue	noon – 3pm	Elbert McCune	
	Tue	7 – 9pm	Jerod Schneider	
	Wed	9am – noon	Bob Hancock	
	Wed	noon – 3pm	Donna Beers	
	Wed	7 – 9pm	Elbert McCune	
	Thu	7 – 9pm	Patty Miklik	
BEG. SILVER FAB.	Tue	6 – 9pm	begins 9/2016	
	Thu	9am – noon	Denny Turner	
	Thu	1 – 4pm	Denny Turner	
BEG. METALS FAB.	Sat	4 – 7pm	Andy Anderson	
SILVER FABRICATION	Tue	9 – 11am	Lois Lukasky	
	Tue	noon – 3pm	Lois Lukasky	
	Wed	7 – 9pm	Al Fuente	
	Thu	7 – 9pm	Ellen Riceman	
	Fri	9:30am – noon	Dee Smith	
	Fri	12:30 – 3:00pm	Dee Smith	
ADV. SILVER FAB.	Wed	9am – 3pm	Denny Turner	
ADVANCED METALS	Wed	9am – 3pm	Jackie Leverone	
CASTING	Mon	1:30 – 7:00pm	Rocio Bergum	
	Tue	9am – 2pm	Dave Smith	
	Fri	5 – 7pm	Rich Yarbrough	
STONE SETTING	Mon	by appointment	Miguel Asmar	
ROCK CARVING	Mon	9am – 1pm	Jan Kunsas	
SPHERE MAKING	Sat	1 – 3:30pm	Paul Williams	
JUNIORS	Sat	10am – 1pm	Lois Lukasky	
DESCRIPTIVE MINERALOGY	Wed	begins 9/2016	Doug Peeler	



KRISTALLE

Est. 1971

Wayne and Dona Leicht

WE ARE CASH BUYERS FOR SINGLE SPECIMENS AND ENTIRE COLLECTIONS!

875 North Pacific Coast Highway - Laguna Beach, CA 92651

949.494.5155 - fax: 949.494.0402

e-mail: info@kristalle.com

Thomas M. Schneider Quality Gemstones



861 6th Avenue, Suite 517

San Diego, CA 92101

www.tmsgems.com

Ph: 619-232-2624

Fax: 619-232-2213

ANDERSON FLUORESCENT MINERALS

WORLD WIDE

FRANKLIN & STERLING HILL, N.J.

Ultraviolet Lamps and accessories from U.V.P.
1430 Vue Du Bay Court San Diego, CA 92109
Phone/Fax 858-488-1420

BUY • SELL • TRADE

BY APPOINTMENT ONLY

AL'S OPAL IMPORTS & LAPIDARY

3684 Fairmount Avenue
San Diego, CA 92105
619 282-1700

Al Ramirez, proprietor
U.S. Navy WWII South Pacific veteran

Unmounted Australian and African Opals

- Lapidary equipment new or used
- Tumblers, diamond blades, belts and grits
- Rough rock for faceting, slabbing or tumbling
 - Recycle your gold or silver jewelry into new designs or repair
- A variety of finished jewelry in silver or gold
 - Faceting gemstones

All work done on premises

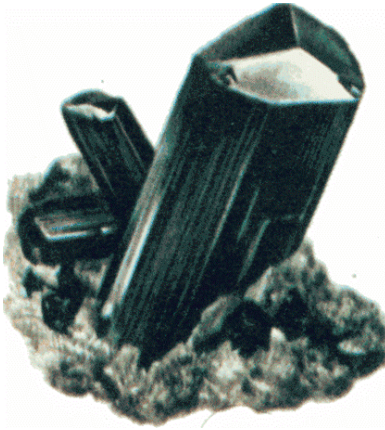
Layaway Available



HOURS:

Monday thru Friday
8:30am to 3:30pm

Saturday
9:00am to 1:00pm



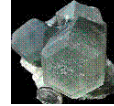
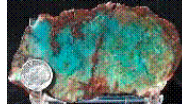
MinersGallery.com

Rock Slabs, Bulk rock, Crystals, Jewelry,
Fossils, Gems and Petrified Wood.

Phone: (619) 445-0800

richard@minersgallery.com

www.minersgallery.com



Minerals and crystals from around the world

*** ROCKS * MINERALS * GEMS * JEWELRY MAKINGS ***

*** LARGEST INVENTORY ***

*** * BEST QUALITY * ***

*** LOWEST PRICES ***

*** NEW ARRIVALS DAILY ***

SOUTH AMERICAN IMPORTS

Direct Importers

2461 San Diego Ave. #10

San Diego, CA 92110

In Old Town, in Coyote Café Shopping Center

Tel: (619) 299-3877

OPEN EVERY DAY!

Village Silversmiths

**Bead Work
Jewelry
Slabs**

**1770 Village Place
Balboa Park
San Diego, CA 92010
619 239-8812**

**Carvings
Rocks
Cabs**



Our business is putting fun and pride
into your lapidary hobby or profession
by making the right tools for your needs

Astounding Selection of Minerals
& Fossils from Around the Globe
MINERS GEMS



Experts in Geology, Gemology & Paleontology

World Famous Gold Rush
Rock Shop & Mining Museum

Daily Mineral Panning and Geode Cutting

Educational Programs Available

In Old Town San Diego State Historic Park
2616 San Diego Avenue, San Diego CA 92110
619-688-1178

minersgemsandminerals@cox.net
www.minersgemsandminerals.com



San Diego Mineral & Gem Society, Inc.

A Non-Profit Educational and Scientific Organization

1770 Village Place, Balboa Park

San Diego, CA 92101-1651

www.sdmg.org

WELCOME!

The SDMG Building
is located
at the north end of
Spanish Village
in Balboa Park

SDMG Museum hours:
11:00am to 4:00pm

Get information
on classes, events,
field trips, reports,
reviews, slideshows
and more at:

www.sdmg.org

ADDRESS SERVICE REQUESTED



THE POCKET PEGMATITE – JUNE 2016

Sun	Mon	Tue	Wed	Thu	Fri	Sat
29	30	31	1	2	3 First Day - SD Fair 4-11pm	4
5	6 GSSD Mtg 7pm, SDMG Bldg	7	8 Exhibitor Appreciation Night - SD Fair 7-9pm	9	10	11
12	13	14	15	16	17 SDMG Min Div Mtg 7pm, SDMG bldg	18
19	20 SDMG Board Mtg 7pm, SDMG Bldg	21	22	23	24	25
26	27 SDMG General Mtg 7pm, SDMG bldg	28	29	30	1	2