



San Diego Mineral & Gem Society, Inc.  
A Non-Profit Educational and Scientific Organization

# THE POCKET PEGMATITE

## NOVEMBER 2016

### GEM DIEGO SHOW

Al Bahr Shrine Center, November 5–6, 2016

**I**T'S TIME AGAIN for our really big SHEW! With help from our members, this year will be bigger, better, and more boffo than ever. Please contact **Bob Hancock** **ASAP** if you can lend a helping hand at:

619-889-6886 or [gemdiego@sdmg.org](mailto:gemdiego@sdmg.org)

Show sign-up sheets with a list of activities are posted in the casting room of the **SDMG** building

**Members who help out with the Show get to browse in the Club Booth one-half hour early** on Saturday morning, before the show even opens to the public. *For more Show details, see page 4.*



### Important dates

**Fri, Nov 4.** Show set-up at Al Bahr Shrine Center.

**9:00am** Loading Crew

**10:00am** Skirting and other Volunteer workers

**Sun, Nov 6, 4:00pm** Show break-down.

**Mon, Nov 21, 6:00pm** SDMG Bldg. Show wrap-up mtg.

Official bulletin of the San Diego Mineral and Gem Society, Inc.

**Affiliations:** California Federation of Mineralogical Societies  
American Federation of Mineralogical Societies  
American Lands Access Association

**Sister Club:** Kingston Lapidary, Hull, England

**Publication:** *The Pocket Pegmatite* is published monthly (except July and August).

#### Submission

**Deadline:** 20th of the month prior to the publication issue.

**Membership:** Anyone with an interest in minerals, fossils, lapidary, gems, or hand-crafted jewelry may join the Society. Contact: [membership@sdmg.org](mailto:membership@sdmg.org)

**Liability:** The San Diego Mineral & Gem Society, Inc., is not and cannot be held responsible and liable for personal injuries, for damage or loss of property at any meetings, field trips, classes, shows, or any event sponsored or recommended herein.

**Copyright:** © 2016 San Diego Mineral and Gem Society, Inc. Non-commercial reprint permission given, unless otherwise noted, provided proper credit is given.

**Street Address:** 1770 Village Place  
San Diego, CA 92101-1651

**Mailing Address:** P.O. Box 710783  
**(membership apps)** Santee, CA 92072  
attn: Angela Cannon

**Phone:** 619-239-8812

**Website:** [www.sdmg.org](http://www.sdmg.org)

**Editor:** [editor@sdmg.org](mailto:editor@sdmg.org)

**Layout, Advertising:** [info@sdmg.org](mailto:info@sdmg.org)

**General Information:** [admin@sdmg.org](mailto:admin@sdmg.org)

**Change of Address:** [membership@sdmg.org](mailto:membership@sdmg.org)

**Exchange bulletins:** Send to the Society mailing address

The mission of the San Diego Mineral and Gem Society, Inc., is to disseminate knowledge of mineralogy and earth sciences; to encourage the study of these subjects; to conduct classes in mineralogy and lapidary arts; to conduct field trips for the collection and study of specimens; to encourage interest in mineralogy and lapidary arts among young people; and to procure and maintain a collection related to the earth sciences and lapidary arts.



## PRESIDENT'S MESSAGE

November 2016

by Shirley Leeson

[sdmgpresident@sdmg.org](mailto:sdmgpresident@sdmg.org)

**A**T OUR LAST SDMG BOARD MEETING held on Monday, October 17th, we had a number of exciting things brought to our attention. **SDMG** and the **California Federation of Mineralogical Societies, Inc. (CFMS)**, co-signed a comment letter on the Management Plan for the **San Gabriel Mountains National Monument (SGMNM)**. The letter submitted to the U.S. Forest Service can be viewed on the **SDMG** website at: <https://goo.gl/h2DP1n> (short url). Thanks to **CFMS** Long Range Planning Chair **Jennifer Haley** for rallying other organizations to be signatories to the letter. **Lisbet Thoresen** did the research and drafted the letter on our behalf. A round of applause was given to **Lisbet** at the Board meeting, even though she wasn't present to accept the accolades. By the way, I am sorry if you missed her presentation on this subject and recent desert updates at **SDMG's General Meeting** in September. You can find **Lisbet's** report on the changing landscape of Public Lands policy on the **SDMG** website at: <http://www.sdmg.org/articles/201610/public-lands-update/>. The slide deck from her presentation can also be found on the **SDMG** website at: <https://goo.gl/IozHT0> (short url). By the way, **Lisbet** is now officially Public Lands Representative for **San Diego Mineral & Gem Society**. You can reach out to her about public lands related issues at [editor@sdmg.org](mailto:editor@sdmg.org). She would be happy to hear from you.

Another topic at the Board meeting was the Program for the forthcoming **SDMG Anniversary Banquet**, which will be held on the evening of March 18, 2017. I was delighted to engage **Dona** and **Wayne Leicht** to be our guest speakers. They are honorary **SDMG** members and well-known internationally as **Kristalle**. Based in Laguna Beach, California, for more than 45 years, **Kristalle** has been synonymous with the very finest mineral and gold specimens. When they said "yes" to my invitation, they were rushing out the door to catch a flight to Germany. They were bound for the Munich Show. The annual World of Minerals, Gems, Jewellery & Fossils is **The** show in Europe. It ranks in the top tier of gem-mineral shows worldwide. **Wayne** is famous for his presentations on crystallized Gold specimens. What more can I say? When tickets become available for this special event, get in line.

Our **General Meeting** Program on Monday, November 28th will be presented by yours truly. I have obtained some pictures of the exhibits at the **AFMS/NFMS Convention and Show**, which was held in Albany, Oregon, in September. My presentation will be enhanced with actual specimens from many of the sites located in the Pacific Northwest – Washington, Oregon, Idaho, and Montana – and also Utah. If you have a specimen from any of these regions, please contact me and we can share them together at the meeting.

I hope the fourth Monday of the month is a good fit for you to attend. With parking in Balboa Park at a premium on Friday evenings, we hope the fourth Monday will make your life easier. Please let me know your thoughts, as the **General Meeting** dates will be evaluated at the end of the year.



**Top.** Native Gold Specimen (Sku G300), courtesy of Kristalle, <https://kristalle.com/product/native-gold/>.

**Bottom.** Washington State rocks on display at the AFMS-NFMS show in Albany, OR. Photo: John Martin.



## JUNIOR DIVISION NEWS

Sponsored by  
Lois Lukasky  
and Marvin Dillard

### Hello from the Juniors!

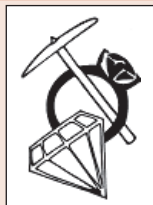
**T**HE GEM DIEGO SHOW is right around the corner! We will have a display case featuring cabochons, wire-wrapping, and metal work. We will also have grab bags and a selling table, which the **Juniors** will take turns staffing in one to two hour shifts on Saturday and Sunday.

Thank you to everyone for making donations for the **Juniors** to sell! You can bring them to the Show on set-up day, Friday, Nov. 4th (see show details on pg 4).

I will need names and times for Volunteers to sign-up. Parents, please plan on bringing and picking up your **Juniors** at the second floor selling table.

**Lois Lukasky**

Junior Division Chairperson



## SAN DIEGO COUNTY FAIR GEMS, MINERALS & JEWELRY DEPT.

by Anne Schafer, Coordinator

**C**ALLING ALL EXHIBITORS! So far, here are some of the new potential new classes for 2017 that YOU have suggested.

### Mineral of the Year:

Lead Family Minerals

### Fossil of the Year:

Trilobites

### Fair Theme Jewelry:

Steampunk Jewelry

Handmade Professional jewelry classes

CAD Professional jewelry classes

### Got questions? Contact:

**Anne Schafer**, Fair Coordinator

858-586-1637 or [Agate.Annie2@gmail.com](mailto:Agate.Annie2@gmail.com).

Brochures will be available in mid-February, and online entry will open in early March. The **entry deadline will be April 28, 2017**. Entry delivery will be Saturday and Sunday, May 27 and 28. The Fair will open at 4:00pm on Friday, June 2nd.

## GEMOLOGICAL SOCIETY of SAN DIEGO



Monday, November 7, 2016  
7:00pm SDMG Building

**T**HIS WILL BE an exciting presentation with **Steve Dente**, one of the men involved in the East African gem trade when Tanzanite was a new gem.

The **Gem Identification** course started Saturday, October 29th. Check the **GSSD** website for updates at: <http://www.gssd.rocks>.

You can join the **GSSD** mailing list at **SDMG's** sign-up page at: <http://www.gssd.rocks>.

## SDMG ANNUAL BANQUET

SAVE THE DATE!

Saturday, March 18, 2017

**O**UR 83RD BIRTHDAY PARTY will be held at the Soledad Club in Pacific Beach. The venue for our dinner banquet overlooks beautiful Mission Bay.

It promises to be a glittering evening – literally – with **Dona** and **Wayne Leicht**, proprietors of **Kristalle**, set to be our honored guest speakers. The **Leichts** are world-renowned purveyors of fine minerals and gold specimens, so we are delighted that they will make a presentation showcasing some of the extraordinary crystallized Gold specimens from the collection (past and present) at **Kristalle**. Stay tuned, more details to come!



## Gem Diego Show

### SDMG's Annual Extravaganza Coming Soon!

Saturday and Sunday, November 5–6, 2016

By Bob Hancock, Show Chairman

**Venue:** Al Bahr Shrine Center

5440 Kearny Mesa Road, San Diego, CA 92111

**Time:** Saturday 9:30am – 5:00pm

Sunday 10:00am – 4:00pm

**Admission & Parking:** Free.

**Website:** [gemdiego.sdmg.org](http://gemdiego.sdmg.org)

**ARE YOU READY?** We have two floors packed to the rafters with everything to make a Gem-Mineral-Jewelry-Fossil enthusiastic absolutely giddy. This year's **Gem Diego Show** will feature 20 exhibit cases showing off the talents of our members. We have 14 professional dealers signed up. We will have learned experts who can identify your mystery mineral or gemstone. There will be facet and carving rough, slabs, mineral and fossil specimens, jewelry, great gifts at great prices, lapidary tools, books, gifts, lots of demonstrators, door prizes, a raffle and food. To put it succinctly, it will be Rockhound nirvana.

### Featured attractions

**Got questions about rocks?** **Doug Peeler** will have his microscope at the ready to help identify your unusual or mysterious rock or mineral.

**Got questions about gems?** Visit the gem ident booth staffed by members of the **Gemological Society of San Diego (GSSD)**. They will gladly take a gander at your precious stones free of charge.

**PLEASE CONTRIBUTE SOME TIME  
TO MAKE GEM DIEGO A BIG SUCCESS,  
AND HAVE FUN IN THE PROCESS.**

#### **WE NEED YOU TO HELP OUT:**

- Security staff
- Haulers & loaders
- Skirting crew
- Selling staff
- Electricians

**Demonstrators.** Our members will show off their talents in lapidary, sphere making, repoussé, faceting, and silver construction. They will explain how to get started in a great hobby, whether it's lapidary arts, metal working, or rock and mineral collecting.

**Master of Ceremonies.** The inimitable **Simon King** will make timely announcements and welcome all comers to the show.

**Door prizes and raffle.** Administered by **Gladys Walker** and **Simon King** (doing double duty).

**Juniors' Booth.** **Lois Lukasky** and **Marvin Dillard** will oversee the **Juniors** at their selling booth. It will have rocks and minerals for sale at rock-bottom prices.

### Ye Olde Show Committee

Chairman	Bob Hancock (619-889-6886)	
Secretary	Anne Schafer	
Treasurer	Wayne Moorhead	
Advertising	Rich Yarbrough	
Signs	Mike Harlow	
Club Booth	Dee Smith & Jennifer Stapp	
Dealers	Garry Cannon	
Demonstrators	Bob Hancock	
Exhibits	Ellen Riceman	
Door Prizes	Simon King & Gladys Walker	
Electrical	Rich Yarbrough	
Floor Plan	Garry Cannon	
Members-At-Large	Tim Bickford	Dave Smith
	Andy Anderson	Rocio Bergum
	Donna Beers	

email us at [gemdiego@sdmg.org](mailto:gemdiego@sdmg.org)

include the committee member you wish to contact and your message will be forwarded.



**Junior Education Display.** Garry Cannon will assist Angie Cannon with a special exhibit table aimed at stimulating the interests of youngsters in a hobby or career in rocks, minerals, geology, or earth science fields.

**The Jaguar Trophy.** The Show draws to a close on Sunday afternoon, when **SDMG President Shirley Leeson** will present the coveted award for outstanding display case at 2:00pm. Join the prestigious roster of past winners.

### Calling All Volunteers!

Please help set up or break down the show by adding your name to the **Sign-up sheets**, which will be located in the Silver Casting Room at the **SDMG** building. Or contact a committee chairman (see previous page for committee members).

**Show Set-Up:** Friday, November 4 (Meet at Al Bahr Shrine)

9:00am – Loading Crew

10:00am – Skirting & other Volunteer workers

Noon – Unload truck, set up cases

2:30pm – Exhibits go in cases

3:00pm – Demos & dealers set up

**Show Break-Down:** Sunday, November 6 at 4:00pm



### GENERAL MEETING

Monday, November 21, 2016  
7:00pm, SDMG Bldg.

**OUR VERY OWN SHIRLEY LEESON** will headline the November meeting with a presentation on the **AFMS-NFMS joint show** held in Albany, Oregon, in September. She has photos of the exhibits at the show courtesy of **John Martin**, and she will bring specimens to share, as well. If you too have specimens from collecting localities in the Pacific Northwest, ranging all the way from the West Coast of Washington, Oregon, and Northern California to Montana and Utah, by all means bring them to the meeting for this Autumn Show and Tell.

Please remember to bring treats to share. The Club will supply coffee, tea, and punch.



U.S. petrified wood in the collection of the Rice Museum of Rocks and Minerals, Hillsboro, Oregon. Photo: John Martin.

***DAC meeting report:  
Progress and process on managing  
desert public lands***

Lisbet Thoresen  
Public Lands Representative for SDMG  
Chair, PLAC-South, CFMS

October 27, 2016

**T**HE DAC BUSINESS MEETING held in Riverside on October 15th was a full day of good presentations and productive discussion focused mostly on Phase II (implementation) of the **Desert Renewable Energy Conservation Plan (DRECP)** and the Management Plan process for the **Mojave Trails National Monument (MTNM)**. It was a good meeting, so it was a pity so few members of the public were present to provide comments (fewer than 20 total, with perhaps four Rockhound advocates, six if one counts one geologist and one paleontologist who came to petition for access to the Marble Mountains fossil beds). The good news in that, perhaps, was that people who had a lot to say were given the opportunity to visit the podium and speak numerous times. **Chair Leslie Barrett** graciously disregarded the clock to allow lengthy comments and repeated rejoinders from the public. The detailed report of the day's agenda and discussion can be found on the **SDMG** website at:

[www.sdmg.org/blmdocs/dac-report-2016-10-15.pdf](http://www.sdmg.org/blmdocs/dac-report-2016-10-15.pdf)

Several agenda items at the October 15th meeting were directly relevant to Rockhounds. They are summarized below. Among them was a presentation on **DRECP** by **Russell Scofield**, BLM Natural Resource Specialist. The Management Plan process for **Mojave Trails National Monument** was outlined by **Mike Ahrens**, BLM Field Officer, Needles. The bureaucratic morass of **Land Use Plan Amendments (LUPAs)** and the processes guiding them are becoming increasingly complicated, with overlaps and conflicting directives. This issue was visited several times throughout the meeting, because it touched on almost every topic and planning effort under discussion.

### ***I. DRECP – Next Steps***

**Field Officer Scofield** has been tasked with overseeing implementation of **DRECP** with the local counties. He is currently working on the First 100 Days Plan – the start date was signing of the

**Attend the next  
District Advisory Council (DAC)  
meeting**

**-- February 2017 --**

**(Date and location TBA)**

*Check the BLM website in early February for meeting location, exact date and agenda –*

<http://www.blm.gov/ca/st/en/info/rac/dac.html>

Record of Decision, Sept 14, 2016. The First 100 Days Plan is a schedule of actionable items, then priorities, budget, and scoping. **Mr. Scofield** wants to reach out to special interest groups (Stakeholders) as part of his commitment to public engagement. After his presentation, several Rockhound advocates self-identified as Stakeholders, and we welcomed dialogue with him. We spoke about the significance of **Mojave Trails** to Rockhounds and the importance of accommodations for collecting being written into the Management Plan.

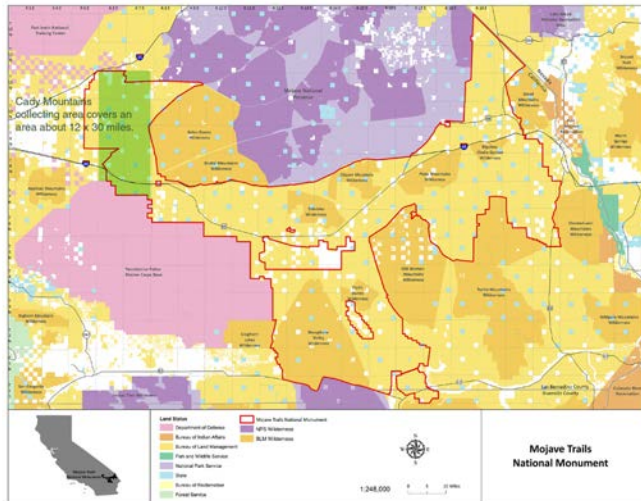
The next **DAC** business meeting will be held in February 2017. A good turnout of Rockhounds would make a strong impression on **Mr. Scofield**, who by that date, will have completed his First 100 Days Plan.

Look for **DAC** meeting details to be posted on the BLM website at: <http://www.blm.gov/ca/st/en/info/rac/dac.html> (and **SDMG** website) in early February. Coming to the **DAC** meetings – strength of numbers – enhances the credibility of the Rockhound community as a committed Stakeholder. It shows **BLM** that we are serious. Let's make a good first impression with **Mr. Scofield** and reciprocate his gesture of inclusiveness by showing up at the next **DAC** meeting.

### ***II. MTNM – Management Plan***

**BLM FO Mike Ahrens** (Needles) presented an outline of the Management Plan process. While it was not explicitly stated, it seems apparent that the **BLM** is intent on completing a Final Plan for the monument within the three-year window allowed by law (the clock started running down on February 12, 2016). Between **Mr. Ahrens** and **Mr. Scofield**, **BLM** is committed to engaging public input during the Plan drafting process. The presentation made by **Mr. Ahrens** stimulated lively discussion and elicited many comments from the public. Rockhound advocates

took the opportunity to log into the record the values and concerns our community attaches to **MTNM**. It is the second largest monument in the system, so given its size and the number of collecting areas within its footprint, I asked **BLM** to set a comment period of reasonable duration (more than 60 days).



Mojave Trails National Monument. BLM map. The main rock collecting areas in the Cady Mountains are within the monument. They are distributed over an area of about 12 x 30 miles (green rectangle, upper left).

I asked **BLM** to accept the authority of [mindat.org](http://mindat.org) URL's with locality titles/descriptors in comment letters from Rockhounds. **Stephen Razo** confirmed that appending a list of sites with URLs would be acceptable, but with the caveat that the body of the letter should contain a few localities with details that exemplify the quality of information given in [mindat.org](http://mindat.org). **BLM** also agreed to accept GIS-compatible files (e.g. kml) as attachments for site locations – **BLM** is willing to import the location layers into its existing digital route maps. If Rockhounds can provide site coordinates, we are alleviated of the burden of also having to provide route information in our comment letters. If you are GIS-challenged, don't worry, you can forward your site locations to **Lisbet Thoresen** ([editor@sdmg.org](mailto:editor@sdmg.org)), and she will get them into the BLM-approved format.

**DAC member Mark Algazy** referred to recreational Rockhounding as "Mining," which prompted me to point out that the term "Mining" should not be used interchangeably with Rockhounding or rock collecting, because the activities have different environmental impacts.

Recreational activity should not be conflated with Mining as being substantially the same, and therefore subject to the same proscriptions or regulatory constraints.

This is not a trivial point. We will be hearing more about Disturbance Caps (DCs), which is a measure of the intrusion or harm imposed by human activity on the environment. **BLM FO Katrina Symons** (Barstow) is currently preparing a Disturbance baseline study, which will be released in May-June, 2017. DCs will be calculated for all the different activities in the desert, and they accrue cumulatively against the activity overall. DCs are not segregated and measured as locality-specific impacts.

Clearly, Rockhounds stand to lose a lot, if our DCs are lumped together with commercial mining. It should also be apparent that high disturbance measured in a single area can skew the overall scoring or cap. That scoring will redound to all collecting areas in aggregate. It will make no difference in terms of access that one area is measured lower than another area.

### **III. Untangling a confusing array of LUPA directives, processes, and implementation**

A variety of programmatic and administrative planning efforts have a role in managing desert public lands. They are all supposed to comport with the **Federal Land Policy and Management Act (FLPMA)**, which just passed its 40th anniversary and whose intent is to balance multiple uses with "sustained yield" (stimulate development of economic opportunities that benefit local communities). However, **DRECP** and **West Mojave Route Network Project (WMRNP)**, in particular, have guidelines or processes that conflict with **FLPMA** and not infrequently with one another. Indeed, the **DRECP** has internal inconsistencies within itself.

Concerns over conflicts between them were pointed out repeatedly by **DAC** members and the public. So, part of the meeting was spent grappling with how best to address the inconsistencies and conflicts, not compound them going forward, and keep them better aligned with the spirit of **FLPMA**.

A motion passed to create a Sub-Group which will engage public participation on implementation of the **DRECP** vis-à-vis **MTNM**. (Some of the discussion and public comments on this subject are found in my [October 2016 DAC report](#).)



The same concerns were voiced over **Planning 2.0**. This initiative is designed to unify land use policy into a coherent master Framework. It will remove decision-making on land use policy from local counties to the Federal level. The driving impetus is to spur renewable energy projects and build a power grid to deliver electricity to load centers across state lines. Recreation (Rockhounds, that's us) and other Stakeholder values (including historical, cultural) are far down the priority list after renewable energy development. Because **Planning 2.0** is under development currently, it is something of a black box, but experienced observers anticipate still more egregious conflicts looming between **Planning 2.0** and **FLPMA**. Prompted by public comments, **BLM** will schedule a **DAC** meeting presentation in the near future, the working title is "Planning 2.0 for Dummies."

### ***Friendly climate for Rockhounds***

I stepped up to the podium perhaps five or six times to respond to points raised by **DAC** members or **BLM** presenters at the October meeting. Whenever comments about amateur Rockhounding were made, there were follow-on comments of support from **DAC** members, **BLM** field officers, and from other attendees. For constructive comments entered into the record on behalf of Rockhounds, special thanks to **DAC Chair Leslie Barrett**, members-at-large **Mark Algazy** and **Randy Banis**, **John Stewart** (Blue Ribbon Coalition, California Four-Wheel Drive Association), and **Gerry Hillier** (Federal Lands consultant to San Bernardino County). Thanks also to **BLM FO Katrina Symons**, Barstow, and **FO Mike Ahrens**, Needles, who offered excellent suggestions on resources to help us draft an effective comment letter for **MTNM**.

Stay current  
with [\*\*News.bytes\*\*](#)

*The BLM California newsletter*

### ***The Takeaway: A blueprint for writing comment letters***

We'll do the work, but we need your club or organization to sign on.

As our members may be aware, a comment letter on the Management Plan for the **San Gabriel Mountains National Monument (SGMNM)** was submitted jointly by **SDMG** and **CFMS** on October 17th. Much of that letter addresses precisely the issues and questions covered at the October 15th **DAC** meeting. As we look forward toward drafting a comment letter for **MTNM**, the **SGMNM** letter will be our model – it's available online at:

<https://goo.gl/h2DP1n> (short url)

The **SGMNM** letter addresses several key topics:

- Exposition of Rockhound values and the importance of the monument to our community.
- Identification of specific problems or concerns with the language of the draft Management Plan.
- Definition/clarification of terms, e.g. amateur Rockhounding versus Mining.
- List of collecting areas, which consists of providing detailed information for several collecting areas as exemplified in mindat.org AND an appendix of a longer list of vetted sites found in mindat.org, providing URLs, site titles/descriptors, and materials.
- **And most important, the letter has other organizations as signatories lending their support to our shared values.**

***Your input is needed.*** If you can contribute data to the **MTNM** letter (or any other letter in the works), please contact **Lisbet Thoresen** at [editor@sdmg.org](mailto:editor@sdmg.org). Ask your club to be a signatory to the **SDMG-CFMS** letter. Even if you or your club do not go collecting in the region covered in our comment letter, be a signatory – you are endorsing universal Rockhound values applicable not only in the public lands you visit, but also in public lands throughout the U.S.

*Thank you to the Signatories  
of the San Gabriel Mts NM comment letter*

American Federation of Mineralogical Societies

Diamond Pacific Tool Corporation

North Orange County Gem & Mineral Society

Oxnard Gem & Mineral Society

Palomar Gem & Mineral Club

Rocky Mountain Federation of Mineralogical Societies

Stewards of the Sequoia



## Turner in Thailand

November 22 and 25, 2015



THIS ARTICLE IS THE SIXTH INSTALLMENT of Denny's travels and training at Wat Sri Suphan, in Chiang Mai, Thailand. Written over two days, Denny describes a unique craft industry using soap as the medium to make beautiful carvings, and he participates in one of Thailand's holiday traditions, the Festival of Lanterns.

**SUNDAY IS A MORNING** to rest up so that one can go out and run around the "Sunday Night Walking Street" street fair in the evening. One of the nice things about being here three months is that I don't have to feel like I have to kill myself cramming every last minute with "exciting vacation memories." I can do some of that at one time, and mindless stuff another. It's nice and fits the general laid-back atmosphere of Chiang Mai.

The Walking Streets are interesting every night they happen. And tonight they are bustling with preparation for tomorrow (Monday), which is the first of three days of the Lantern Festival. Each evening the night sky will be lit up with thousands of tiny hot air balloons/lanterns as people send their prayers and wishes aloft towards the gods.

Most of the wats and many of the main roads are being decorated. There are so many little lanterns released into the air during the festival that the airport is shut down for three nights running as a safety measure. In other parts of the world, airports are shut down due to snow, storms, and terrorists. Here they are shut down due an outpouring of illuminated prayers to the gods. I like this way better.

Some of the most charming gifts one can buy at the street fairs are the carved and painted soaps that look like gorgeous little flowers. The delicacy of both the carving and painting is amazing. They are another example of masterly hand craftsmanship. Each little soap carving gets a little pot and lid in which to keep it safe. I may have to bring a few of these home.





### *Wednesday, November 25*

Today is a very special day in much of Thailand. It's the start of the two day Yee Peng, or Festival of Lanterns (or Lights). All yesterday and during the day today, and all evening long, people were setting off fireworks: strings of firecrackers, cherry bombs, really BIG bangers, and at night, they are supplemented by skyrockets and Roman candles. I'm writing this near to midnight, and there are still pops and bangs and crackles going off all over the city. And some of it I can see from my hotel room window.

I do not really understand the origin and meaning of the holiday and none of my guidebooks speak to it, other than to say it's a big tourist event. But a LOT of people have come to town to participate. And it happens in other cities, too. Being a holiday, there was no class today. So, I went shopping.

This evening was the real event for the Festival of Lanterns. There was a huge parade that runs along the outer ring road next to the east gate (the heart of the tourist area), then makes a right turn and heads towards the Mei Ping River and the Night Bazaar. It's like the Rose Parade at night, with many decorated floats, costumes, dancers, and marching people with banners, and lights, lights, lights. It runs well over an hour. Tens of thousands of people jam the streets taking photos and just having fun. There is a lot of civic pride in the floats and many were just beautiful. Most are lighted up and have music – all of which is powered by a trailer carrying a generator (the music covers the sounds of the generator).

After the parade, they started the big beauty contest on an outdoor stage on the plaza by the east gate – one for men and one for women, all of whom were dressed in uniform traditional costumes. I didn't stick around for much of that because I wanted to move towards the Night Bazaar, as that is where they launch the lanterns.

Imagine a great, full moon and a night sky filled with clouds and thousands upon thousands of bright lights lazily floating along in the breeze as they climb higher and higher – a swarm of little fires burning aloft. These lanterns are made of tissue paper and wood. A flame that burns underneath each lantern produces the hot air needed to lift them upward into the sky. Many lanterns measure about





18 inches across and 40 or so inches tall. At one of the lantern launching areas where I wandered by, folks were writing messages on their lanterns. These messages, prayers, wishes and hopes were being sent to the gods above. Wave after wave of lanterns rose aloft for several hours.

Tourists and local folks were mingling, helping each other and just grinning ear to ear with each successful launch. Not all of them were successful. There were a few spectacular mini-Hindenburg crashes into trees and onto building rooftops. But thousands were successful. The huge swarms of lights initiated from the Night Bazaar area served as a skyscape to the wat, where I watched people do their launching. No, I didn't launch a lantern of my own, as this is something one needs to do with others, but I did buy a couple to save for later.

There was food and drink everywhere, and people from dozens of nations and cultures doing this rather amazing thing with each other. EVERYBODY was smiling – having the best time. The atmosphere was suffused with a sense of grace and peacefulness. Everybody was HAPPY! It was moving. And it was extraordinary. (And there is a second night tomorrow night.)

Happy Thanksgiving, everybody!



## SDMG Library

SDMG Bldg.

Andy Anderson

**Hours:** 4 to 6 pm, Wednesdays

*Reference use only, no lending at the present time.*

### Access the catalog online at:

<https://cloud.collectorz.com/sdmgmerklib/books>

### Who may use the Library?

Membership is not required to view the catalog, but only **SDMG** members may come in and use the reference library.

### We Need Volunteer Assistant Librarians.

Members willing to volunteer in the Library will enable us to extend the hours of access.

**Contact Andy at [aanderson@sdmg.org](mailto:aanderson@sdmg.org),**  
if you can help out.





## CFMS Field Trip

### Cady Mountains

November 5, 2016

This trip is open to all participants who agree to abide by the **AFMS Code of Ethics**, to follow the directions of the field trip leaders, and to practice safe rockhounding. Participants must sign in and sign out with the field trip leader. Participants must also agree to sign a Consent and Assumption of Risk Waiver of Liability form.

**Trip Location:** Cady Mountains, east of Barstow, CA.

**Date:** Saturday, November 5. Meet at 8:00am.

**Materials:** Agate and Jasper.

**Meeting Location:** Basin Road exit of I-15 on the South Side for orientation and sign in. Waiver of liability will be signed at the meeting spot. From the meeting spot we will caravan for about 20 minutes to the collecting site.

**Field Trip Leaders:** **Adam Dean** and **Roy Isaac**. Please notify **Adam** or **Roy**, if you plan on attending. Email or call, if you have any questions or need more information.

**Adam Dean** 909-489-4899 -or- [theagatchhunter@verizon.net](mailto:theagatchhunter@verizon.net)

**Roy Isaac** 805-551-9946 -or- [1bionicdj@gmail.com](mailto:1bionicdj@gmail.com)

**What to Bring:** Collecting bags/buckets, rock hammer, digging equipment, safety glasses and spray bottles, First Aid kits. Bring lunch. Plenty of water and a camera, this widespread field offers no shade so use sun screen and protect yourself.

If you would like to stay for the weekend, this general area offers a wide variety of material, so bring your rock collecting guide.

**Clothing:** Wear clothing in layers as weather can be unpredictable at this time of year. Bring extra jackets and warm clothes.

**Vehicles:** We will be traveling thru a sandy wash so a 4×4 is a must. Gas and food are available in Barstow.

**Reminder:** Please help to preserve our deserts and pack out what you pack in. Please let **Adam** or **Roy** know if you are going to go on the field trip. If they don't know to expect you, they won't be able to contact you if the field trip is canceled. Even if you decide you might not go, please contact them so the group isn't waiting around or looking for you. Don't wait until the day before, sometimes they leave days before the field trip and they won't be able to communicate with you.

**Safety:** Do not lick the rocks, use sun screen, when needed, stay away from rattlesnakes, use bug spray, be aware of flash floods, be extra careful, team up with a buddy and don't get lost.

## ON THE GO ... TO A SHOW



### NOVEMBER .....

- 5–6 SANTA ANA, CA – 49th Annual Opal, Gem & Jewelry Show**  
**Sponsor:** American Opal Society  
**Venue:** The Phoenix Club  
 1340 S. Sanderson Ave., Anaheim, CA 92806  
**Hours:** Sat 10:00am – 6:00pm  
 Sun 10:00am – 5:00pm  
**Admission:** Adults \$3.00, Kids under 15 Free.  
**Parking:** Free.  
**Contact:** Veronica Purpura, 714-509-9959  
 or [info@opalsociety.org](mailto:info@opalsociety.org)  
**Website:** [www.opalsociety.org](http://www.opalsociety.org)  
 Opal, Gem and Jewelry Dealers from the USA and Australia; raffle with many prizes of gemstones and jewelry; seminars on gemstone and jewelry topics; demonstrations on jewelry making, gemstone cutting.
- 5–6 RIDGECREST, CA – Indian Wells Gem & Mineral Show**  
**Sponsor:** Indian Wells Gem & Mineral Society  
**Venue:** Desert Empire Fairgrounds  
 520 S. Richmond Rd., Ridgecrest, CA 93555  
**Hours:** 9:00am – 5:00pm daily  
**Admission and Parking:** Free.  
**Contact:** John DeRosa, 760-375-7905  
[jfrocks@dslextreame.com](mailto:jfrocks@dslextreame.com)
- 6 RIDGECREST, CA – Rainbow Ridge Field Trip**  
**Sponsor:** Indian Wells Gem & Mineral Society  
**Meeting time:** 9:00am sharp  
**Contact:** John DeRosa, 760-375-7905  
[jfrocks@dslextreame.com](mailto:jfrocks@dslextreame.com)
- 11–13 SANTA ANA, CA – LLD Productions' West Coast Gem & Mineral Show**  
**Venue:** Holiday Inn-Orange County Airport  
 2726 S. Grand Ave., Santa Ana, CA 92705  
 (Exit 8 from the 55 Freeway, Grand & Dyer)  
**Hours:** Fri and Sat 10:00am – 6:00pm  
 Sun 10:00am – 5:00pm

**Admission and Parking:** Free. Open to the public.

**Website:** [www.mzexpos.com](http://www.mzexpos.com)

80 dealers, wholesale and retail.

- 19–20 OXNARD, CA – 47th Annual Galaxy of Gems Expo – Feldspar**  
**Presented by:** Oxnard Gem & Mineral Society  
**Venue:** Oxnard Performing Arts Center  
 800 Hobson Way, Oxnard, CA 93030  
**Hours:** Sat 10:00am – 5:00pm  
 Sun 10:00am – 4:00pm  
**Admission and Parking:** Free  
**Contact:** Diane Cook, 805-647-8517 or  
[johndianedaisy@yahoo.com](mailto:johndianedaisy@yahoo.com)  
**Website:** [www.oxnardgem.com](http://www.oxnardgem.com)  
 Seventy display cases and educational exhibits. Activities will include demonstrations, a silent auction, books and plants for sale. Dealers will have gems, minerals, fossils, stone beads, Idaho opals, silver craft, finished jewelry, tools, lapidary supplies, and books. Each child will receive a free polished rock and there will be activities for Kids, including Natl Park Service Paleontologist Junior Ranch Program (Ages 5-12), games and crafts. Teachers with Teacher ID will receive Earth Science Posters and material while supplies last.

## JOHN E. GARSOW

### gems & minerals

November 11–13

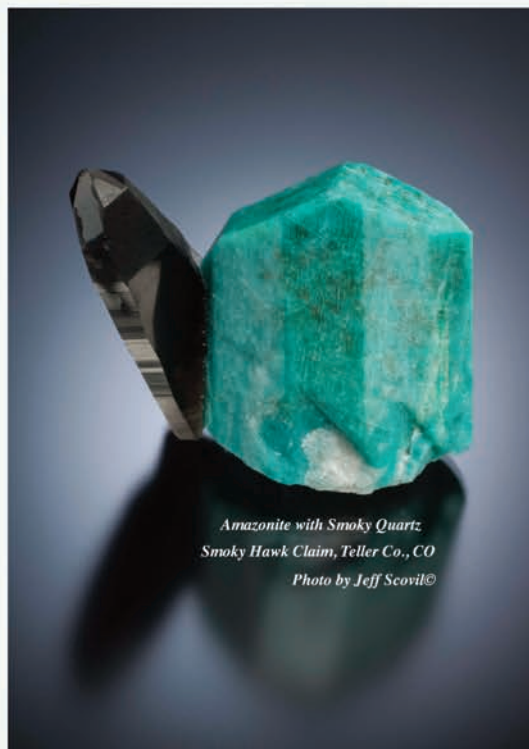
**West Coast Gem & Mineral Show**  
 Holiday Inn-Orange County Airport  
 2726 S. Grand Ave., Santa Ana, CA

Facet Rough • Cabbing Rough  
 Jewelry • Mineral Specimens

[www.johngarsow.com](http://www.johngarsow.com)

# WEST COAST ~ FALL GEM & MINERAL SHOW

A-Z Jewelry Supply by MajestaM  
African Arts & Minerals  
Antero Minerals & Jewelry  
Barlow's  
Barrett, Owen, Gems  
Bolva Group, Inc.  
Cam's Crystal Gallery  
Campbell. Prentiss  
Capistrano Mining Co.  
Cinderhill  
Cut Edge Gems  
Deal OK  
Dragon Minerals  
Dynamic Energy Crystals  
Earth's Treasures  
Eidos  
El Paso Rock Shop  
Empire Gems International  
Exotic Minerals of Russia  
Felipe Barrera  
Fenn's Gems & Minerals  
Five Lions Gems  
Fossils Inc.  
Freedom Valley Gems & Minerals  
Garson, John E., Gems & Minerals  
Gem Nest & Minerals  
Gemstone Material Interiors  
Gochenour's Minerals  
Golden State Gem & Mineral  
H.R. Marble Lights  
IC Minerals  
J-K Stone Company  
Jewel Pledge  
Jewel Tunnel Imports  
Johnson, Ed, Co.  
Joyoung International Corp.  
King Mike Mining Inc.  
Kristalle  
Krystal Light Imports



*Amazonite with Smoky Quartz  
Smoky Hawk Claim, Teller Co., CO  
Photo by Jeff Scovil©*

Lasco Diamond Products  
Loomis Minerals  
Madagascar Import SEAM  
Malachite & Gems of Africa  
Maura's Treasure Box  
Midwest Minerals  
Miner's Kingdom  
Mineral Treasure-Madagascar Gemstones  
Minerallity  
Moroccan Fossils & Minerals  
Moroccan Stones  
Nature Little Stone  
New Era Gems  
New Horizon Studio  
Olson, Donald K. & Associates  
Opex Opal  
PaleoFacts  
Piratas de Navajun  
Rhodo Co.  
Rock N Spheres  
Samstone, Inc.  
Seibel Minerals  
Silver Egypt  
Sister Stones  
Slavic Gifts  
Starborn Creations  
Terra Firma Minerals  
The Obsidian House  
Todd Schowalter Fossils  
Top-Gem Minerals, Inc.  
Tucson Todd's Gems  
Unite ZYL Int'l, Inc.  
Usman Imports  
Vance Gems  
Wolfe, Tom Minerals  
Wonderworks  
XTAL - Dennis Beals Minerals

## NOV. 11 - 13, 2016

Hours: Fri. & Sat. 10 - 6 ★ Sun. 10 - 5

**SANTA ANA, CA**  
**Holiday Inn - Orange County Airport,**  
**2726 S. Grand Ave.,** (take 55 Fwy Exit 8 for Dyer Rd. to S. Grand Ave.)

### 80 Top Quality Dealers

Minerals ★ Fossils ★ Gemstones ★ Jewelry ★ Beads ★ Decorator Pieces ★ Meteorites ★ Lapidary ★ Metaphysical

**FREE ADMISSION ★ FREE PARKING ★ WHOLESALE ★ RETAIL**

LLD Productions, Inc., P.O. Box 665, Bernalillo, NM 87004, Fax: (303) 223-3478, [mzexpos@gmail.com](mailto:mzexpos@gmail.com)

[wwwmzexpos.com](http://wwwmzexpos.com)

[facebook.com/mzexpos](https://facebook.com/mzexpos)



**DECEMBER .....**

- 3–4 BARSTOW, CA – 42nd Annual Mojave Desert Gem & Mineral Society Show**  
**Venue:** Cora Harper Community Center  
 841 S. Barstow Road, Barstow, CA 92311 (I-15 north of Barstow Road)  
**Hours:** Sat and Sun 10:00am – 5:00pm  
**Admission and Parking:** Free.  
**Contact:** Danny Watts 760-373-1309  
**Website:** [www.mdgms.net](http://www.mdgms.net)  
 Demonstrations, displays, educational exhibits, great food, gem & mineral dealers, gifts for all ages, jewelry galore, kids' activities include grab bags and spin-the-wheel, lapidary arts & crafts, Silent Auction and Raffles. Proceeds go to local Scholarship.
- 3–4 LAKESIDE, CA – Rock and Gem Round-up**  
**Sponsor:** El Cajon Valley Gem & Mineral Society  
**Venue:** Lakeside Rodeo Grounds  
 12584 Maplevue St., Lakeside, CA 92040  
**Hours:** Sat 10:00am – 5:00pm  
 Sun 10:00am – 4:00pm  
**Admission and Parking:** Free  
**Contact:** Mary Ness, 619-449-0759  
 or [ecvgms@gmail.com](mailto:ecvgms@gmail.com)  
**Website:** [www.ecvgms.org/annual-show.html](http://www.ecvgms.org/annual-show.html)  
 Inside and outside vendors featuring rocks, gems, minerals, fossils, slabs, beads, jewelry, lapidary supplies and crafts, and also kids' activities, raffle.

- 9–10 RIALTO, CA – OBMS Tailgate Rock, Mineral & Gem Show**  
**Sponsor:** Orange Belt Mineralogical Society  
**Venue:** Across from Rialto City Hall  
 105 S. Palm Ave., Rialto, CA 92376  
**Hours:** 9:00am – 6:00pm  
**Admission:** Free.  
**Contact:** Jessica Pearson, 909-887-5507  
 or [jpearson1915@gmail.com](mailto:jpearson1915@gmail.com)  
**Website:** [OBMSRocks.yolasite.com](http://OBMSRocks.yolasite.com)  
 Beautiful gemstones and handcrafted jewelry. Fossils, rocks and minerals for collecting.

Login to the SDMG  
 member website  
 to view the master calendar  
 for 2016-17  
[www.sdmg.org/sdmg-members/](http://www.sdmg.org/sdmg-members/)

**Save the Date!**  
**SDMG Christmas Potluck**  
**Monday, December 19th**  
 4:00–10:00pm

*Room 101 in Casa del Prado*  
 There will be Food, a Silent Auction,  
 a Christmas Ornament Contest,  
 Door Prizes, and much Merriment.

**MARK YOUR CALENDAR!**  
**CHRISTMAS ON THE PRADO (aka December Nights)**

Friday, December 2, 3:00 – 11:00pm  
 Saturday, December 3, noon – 11:00pm

**A**LL OF BALBOA PARK will be festive, with singers, dancers, and holiday foods. Many Museums will be open late and have free admission after 5:00pm.

**SDMG** will be open to the public for people to walk in and have a look around. For the Members who volunteer, it's an opportunity for free class time, and we have our own Potluck dinner and snack area where we share goodies

among the Volunteers. **SDMG** has exhibit cases, demonstrations, plus it's a great time to educate visitors about rocks and introduce new enthusiasts to the Society.

Join in the fun! When the sign-up sheets appear in the classrooms, **add YOUR name!**

Contact **Jim Parrish** if you can staff the booth.



## San Diego Mineral & Gem Society, Inc.

A Non-Profit Educational and Scientific Organization

### Membership Information:

Interested in minerals, fossils, lapidary, gems,  
or handcrafted jewelry? We are, too!

Adults (18 and older): \$30.00

Second adult, same address: \$10.00

Junior (under 18): \$10.00

Membership application forms  
are available on-line at [www.sdmg.org](http://www.sdmg.org),

and at the Village Silversmiths Shop  
in the SDMG Building,

or by contacting the SDMG Membership Secretary  
[membership@sdmg.org](mailto:membership@sdmg.org)

or by writing to her at:

San Diego Mineral & Gem Society  
attn: Angela Cannon  
P.O. Box 710783  
Santee, CA 92072

Please allow up to 3 weeks for processing your application

MAKE CHECKS PAYABLE TO:

**San Diego Mineral and Gem**

### SDMG BADGES:

Order for just \$7,  
payable in advance  
from Simon King or Gladys Walker



SAN DIEGO MINERAL  
& GEM SOCIETY

YOUR NAME

Magnetic back comes standard. If you have a pacemaker, please  
request the pin back. You may pick up your completed badge at a  
Friday night meeting.

## CLASSIFIED ADS

### OCEANVIEW MINE TOUR & SCREENING TRIPS:

Sundays, 11:00am to 3:00pm

For more information  
please visit [www.digforgems.com](http://www.digforgems.com)

or call Jeff Swanger at 760-415-9143

Reservations required.

\$75. Adults \$60. Children (ages 5 to 11)

Family rates available.

### HIMALAYA MINE TAILINGS:

Thursday-Monday, 10:00 am to 3:00 pm.

At the Lake Henshaw Resort on Highway 76.

Adults, \$75 per day. Kids 12-15, half price.

Screening tables, buckets, and shovels provided.

Call (775) 830-5797

or (775) 772-7724 for more info

Website:

[www.highdesertgemsandminerals.com/](http://www.highdesertgemsandminerals.com/)

## WEBSITES

SDMG:

[www.sdmg.org](http://www.sdmg.org)

CFMS:

[www.cfmsinc.org](http://www.cfmsinc.org)

AFMS:

[www.amfed.org](http://www.amfed.org)

PUBLIC LANDS:

[www.amlands.org](http://www.amlands.org)

BLM:

[www.ca.blm.gov](http://www.ca.blm.gov)

BOB'S ROCK SHOP:

[www.rockhounds.com](http://www.rockhounds.com)

MUSEUMS:

[www.sdnhm.org](http://www.sdnhm.org)

[www.nhm.org](http://www.nhm.org)

[www.amnh.org](http://www.amnh.org)

[www.mnh.si.edu](http://www.mnh.si.edu)

[www.gia.edu](http://www.gia.edu)



## CLASS SCHEDULE – 2016

**REGISTRATION IS REQUIRED BEFORE ALL CLASSES.**

You must contact the instructor before attending any class to find out when the class starts and ends, if special materials are required and whether you qualify to attend. Fee is \$5.00 per class; it is usually easier for instructors if payment is made for a full month; cash or checks only, please. ***Classes are open to members only*** and students must read and follow the **School Rules** available in the classroom and at:

<http://www.sdmg.org/class-schedule/school-rules.pdf>

<b>CABOCHONS</b>	Tue	6 – 9pm	Tim Bickford	
	Wed	9 – 11:30am	Jim Claypool	
	Wed	12:30 – 3:00pm	Jim Claypool	
	Wed	7 – 9pm	Andy Anderson	
	Thu	7 – 9pm	Jon Evans	
<b>FACETING</b>	Tue	noon – 3pm	Elbert McCune	
	Tue	7 – 9pm	Jerod Schneider	
	Wed	9am – noon	Bob Hancock	
	Wed	noon – 3pm	Donna Beers	
	Wed	7 – 9pm	Elbert McCune	
	Thu	7 – 9pm	Bill Brisebois	
<b>BEG. SILVER FAB.</b>	Tue	6 – 9pm	Stephanie Griffin	
	Thu	9am – noon	Denny Turner	
	Thu	1 – 4pm	Denny Turner	
<b>BEG. METALS FAB.</b>	Sat	4 – 7pm	Andy Anderson	
<b>SILVER FABRICATION</b>	Tue	9 – 11am	Lois Lukasky	
	Tue	noon – 3pm	Lois Lukasky	
	Wed	7 – 9pm	Al Fuente	
	Thu	7 – 9pm	Ellen Riceman	
	Fri	9:30am – noon	Dee Smith	
	Fri	12:30 – 3:00pm	Dee Smith	
<b>ADV. SILVER FAB.</b>	Wed	9am – 3pm	Denny Turner	
<b>ADVANCED METALS</b>	Wed	9am – 3pm	Jackie Leverone	
<b>CASTING</b>	Mon	1:30 – 7:00pm	Rocio Bergum	
	Tue	9am – 2pm	Dave Smith	
	Fri	5 – 7pm	Rich Yarbrough	
<b>STONE SETTING</b>	Mon	by appointment	Miguel Asmar	
<b>ROCK CARVING</b>	Mon	9am – 1pm	Jan Kunsä	
<b>SPHERE MAKING</b>	Sat	1 – 3:30pm	Paul Williams	
<b>JUNIORS</b>	Sat	10am – 1pm	Lois Lukasky	
<b>DESCRIPTIVE MINERALOGY</b>	Wed	6:30 – 9pm	Doug Peeler	





# KRISTALLE

Est. 1971

*Wayne and Dona Leicht*

WE ARE CASH BUYERS FOR SINGLE SPECIMENS AND ENTIRE COLLECTIONS!

875 North Pacific Coast Highway - Laguna Beach, CA 92651

949.494.5155 - fax: 949.494.0402

e-mail: [info@kristalle.com](mailto:info@kristalle.com)



# **Thomas M. Schneider Quality Gemstones**



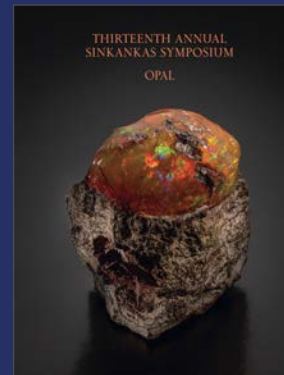
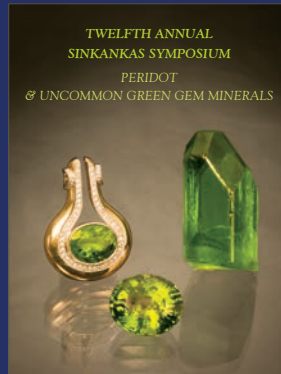
**861 6th Avenue, Suite 517**

**San Diego, CA 92101**

**[www.tmsgems.com](http://www.tmsgems.com)**

**Ph: 619-232-2624**

**Fax: 619-232-2213**



## THE ANNUAL SINKANKAS SYMPOSIUM

[www.sinkankassymposium.net](http://www.sinkankassymposium.net)  
(Order offprints from past symposia)

“The best gem mineral symposium  
in North America.”  
— John Koivula

## AL'S OPAL IMPORTS & LAPIDARY

**3684 Fairmount Avenue  
San Diego, CA 92105  
619 282-1700**

Al Ramirez, proprietor  
*U.S. Navy WWII South Pacific veteran*



### Unmounted Australian and African Opals

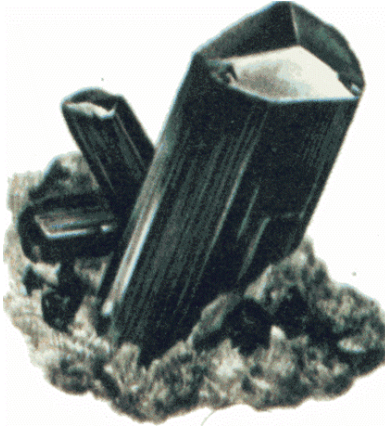
- Lapidary equipment new or used
- Tumblers, diamond blades, belts and grits
- Rough rock for faceting, slabbing or tumbling
  - Recycle your gold or silver jewelry into new designs or repair
- A variety of finished jewelry in silver or gold
  - Faceting gemstones

*All work done on premises  
Layaway Available*



**HOURS:**  
**Monday thru Friday**  
**8:30am to 3:30pm**  
**Saturday**  
**9:00am to 1:00pm**





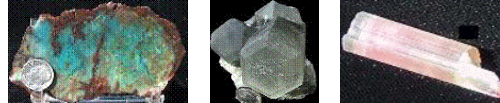
## MinersGallery.com

Rock Slabs, Bulk rock, Crystals, Jewelry,  
Fossils, Gems and Petrified Wood.

Phone: (619) 445-0800

[richard@minersgallery.com](mailto:richard@minersgallery.com)

[www.minersgallery.com](http://www.minersgallery.com)



Minerals and crystals from around the world

**\* ROCKS \* MINERALS \* GEMS \* JEWELRY MAKINGS \***

**\* LARGEST INVENTORY \***

**\* \* BEST QUALITY \* \***

**\* LOWEST PRICES \***

**\* NEW ARRIVALS DAILY \***

## **SOUTH AMERICAN IMPORTS**

**Direct Importers**

**2461 San Diego Ave. #104**

**San Diego, CA 92110**

**In Old Town, in Coyote Café Shopping Center**

**Tel: (619) 299-3877**

**OPEN EVERY DAY!**

# *Village Silversmiths*

**Bead Work  
Jewelry  
Slabs**

**1770 Village Place  
Balboa Park  
San Diego, CA 92010  
619 239-8812**

**Carvings  
Rocks  
Cabs**



Our business is putting fun and pride  
into your lapidary hobby or profession  
by making the right tools for your needs

Astounding Selection of Minerals  
& Fossils from Around the Globe  
**MINERS GEMS**



Experts in Geology, Gemology & Paleontology

World Famous Gold Rush  
Rock Shop & Mining Museum

Daily Mineral Panning and Geode Cutting

Educational Programs Available

In Old Town San Diego State Historic Park  
2616 San Diego Avenue, San Diego CA 92110  
619-688-1178

[minersgemsandminerals@cox.net](mailto:minersgemsandminerals@cox.net)  
[www.minersgemsandminerals.com](http://www.minersgemsandminerals.com)



# San Diego Mineral & Gem Society, Inc.

A Non-Profit Educational and Scientific Organization

1770 Village Place, Balboa Park

San Diego, CA 92101-1651

[www.sdmg.org](http://www.sdmg.org)

## WELCOME!

The SDMG Building  
is located  
at the north end of  
Spanish Village  
in Balboa Park

SDMG Museum hours:  
11:00am to 4:00pm

Get information  
on classes, events,  
field trips, reports,  
reviews, slideshows  
and more at:

[www.sdmg.org](http://www.sdmg.org)

## ADDRESS SERVICE REQUESTED



## THE POCKET PEGMATITE – NOVEMBER 2016

Sun	Mon	Tue	Wed	Thu	Fri	Sat
30	31	1	2	3	4 SDMG Gem Diego Show set-up Al Bahr Center	5 SDMG Gem Diego Show Al Bahr Center San Diego
6 Gem Diego Show ends	7 GSSD Mtg, 7pm, SDMG bldg	8	9	10	11 Santa Ana Gem & Mineral Show begins	12 CFMS business mtg Visalia
13 Santa Ana show ends	14	15	16	16	18	19
20	21 Gem Diego Wrap-up Mtg 6pm SDMG Board Mtg 7pm, SDMG Bldg	22	23	24 Thanksgiving	25	26
27	28 SDMG General Mtg 7pm, SDMG bldg	29	30	1	2 SDMG Open House December Nights Balboa Park	3 SDMG Open House December Nights Balboa Park