



San Diego Mineral & Gem Society, Inc.
A Non-Profit Educational and Scientific Organization

THE PEGMATITE

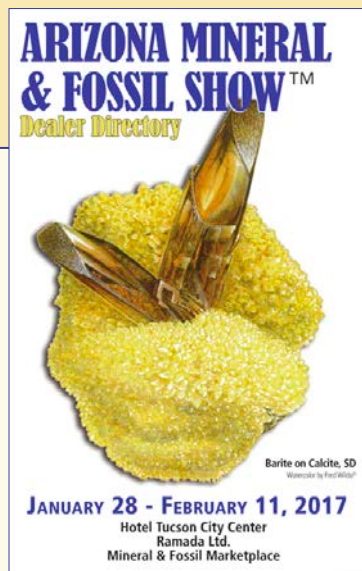
FEBRUARY 2017

GENERAL MEETING

Monday, February 27, 2017

SDMG Bldg, Balboa Park 7pm

SHOW-AND-TELL is the theme of the annual February **General Meeting**. Everyone should have recovered from their trips to Quartzsite or Tucson by the time this meeting rolls around, so you should be in great shape to carry in all those special minerals, gems, cabs, fossils, gem trees, or other items that you acquired by roaming all over the acres and acres of shows held in either aforementioned city. This is the best meeting we have all year, because we all are the speakers. For those of you who didn't make it to the shows this year, our February meeting is a chance to see what you missed (or didn't miss). Of course we'll have our great door prize raffle, and refreshments. Please remember to bring a treat to share with the group; **SDMG** will provide coffee, tea, and punch. **Vice President Jim Parrish** will be in charge of this meeting, because **President Shirley Leeson** and her daughter will be attending the Cubs' opening day of spring training (it's one of those non-rockhound bucket list items...)



Official bulletin of the San Diego Mineral and Gem Society, Inc.

Affiliations: California Federation of Mineralogical Societies
American Federation of Mineralogical Societies
American Lands Access Association

Sister Club: Kingston Lapidary, Hull, England

Publication: *The Pegmatite* is published monthly (except July and August).

Submission

Deadline: 20th of the month prior to the publication issue.

Membership: Anyone with an interest in minerals, fossils, lapidary, gems, or hand-crafted jewelry may join the Society. Contact: membership@sdmg.org

Liability: The San Diego Mineral & Gem Society, Inc., is not and cannot be held responsible and liable for personal injuries, for damage or loss of property at any meetings, field trips, classes, shows, or any event sponsored or recommended herein.

Copyright: © 2017 San Diego Mineral and Gem Society, Inc. Non-commercial reprint permission given, unless otherwise noted, provided proper credit is given.

Street Address: 1770 Village Place
San Diego, CA 92101-1651

Mailing Address: P.O. Box 710783
(membership apps) Santee, CA 92072
attn: Angela Cannon

Phone: 619-239-8812

Website: www.sdmg.org

Editor: Lisbet Thoresen, editor@sdmg.org

Layout, Advertising: info@sdmg.org

General Information: admin@sdmg.org

Change of Address: membership@sdmg.org

Exchange bulletins: Send to the Society mailing address

The mission of the San Diego Mineral and Gem Society, Inc., is to disseminate knowledge of mineralogy and earth sciences; to encourage the study of these subjects; to conduct classes in mineralogy and lapidary arts; to conduct field trips for the collection and study of specimens; to encourage interest in mineralogy and lapidary arts among young people; and to procure and maintain a collection related to the earth sciences and lapidary arts.



PRESIDENT'S MESSAGE

February 2017

by Shirley Leeson

sdmgpresident@sdmg.org

TWO ITEMS OF IMPORTANCE need to be clarified. First, the **SDMG Board** voted to change the day and months of the **Mineral Division** meetings. It will now be on the second Friday of March, and May, 2017. The May 12th meeting will be the very special meeting hosted by the **Junior Division**, so please mark the date on your calendar. The **Juniors** will provide a special program and have a great door prize event. All proceeds from the evening goes into the **Junior Fund**, which will be used for field trips and other special treats for our **Juniors**.

The second item that needs clarification is that the **SDMG Board** voted to retain the fourth Monday of the month for the **General Meeting** until further notice. We offer two meetings most months with the hope people who can't attend one will be able to attend the other. We have found Monday in Balboa Park gives us better parking in and around our facility, because there aren't as many other activities going on in the park as there are on Friday evenings. Traffic throughout the city and getting to Balboa Park doesn't seem as bad on Mondays. Try it, you'll find it easier.

Coming up shortly is our **Annual Banquet**. It will be an evening affair held at the Soledad Club in Pacific Beach on Saturday March 18th, 2017. This event honors our Past Presidents and other dignitaries. This year Honorary Members **Dona** and **Wayne Leicht** will be our featured speakers. **Wayne** is famous for his gold specimens and his expertise on the subject. He has been called upon by world museums for advice and appraisals. I hope we can coax **Dona** to enlighten us on what goes on behind the scenes of many of the major Gem and Mineral events such as the shows in Tucson and Munich, Germany. Details about the Banquet can be found on page 4, along with a profile of the **Leichts** and their company **Kristalle**.

General Meeting Recap: Camp Zzyzx January 23, 2017

THE WEATHER has been playing havoc on our meetings, but we need the rain so badly. In January, the **General Meeting** had only 13 attendees who braved the storm and came out. But those who showed up enjoyed a program on the **California Federation's Earth Science Program** at the famous **Zzyzx Retreat**, which is operated by the **BLM** and a consortium of California State universities as a field station classroom and research facility. It is located in the Southern California desert near Baker. **CFMS** has been there for 32 years providing classes on beading, wire art, silver fabrication, precious metal clay, soft stone carving, faceting and alternative casting, among its many lapidary classes.

I'd like to remind you that our own **Anne Schafer** selects the door prizes for the **General Meeting**, and they are awesome. The Indian style pear-shaped



Class in session at Zzyzx. Photo: John Martin.

inlaid cabs caused a stir, along with a small intarsia just right for wire-wrapping, so ticket sales were brisk.

Andy Anderson has been doing a great job overseeing the refreshment table and your donations are very much appreciated. One last note – it was **Andy's** birthday, and he won three of the door prizes. Isn't that fate!



JUNIOR DIVISION NEWS

Sponsored by
Lois Lukasky
and Marvin Dillard

Hello from the Juniors!

WE ARE HARD AT WORK on new projects for the **Juniors'** display case at the **San Diego County Fair**. It opens Friday, June 2nd.

On Friday, May 12th, the **Juniors** will host the **Mineral Division Meeting**, and they will have a selling table at the **Annual Spring Barbeque**. In June, we will have a break before summer classes begin. The summer schedule will be posted in the May and June bulletins.

Paul Williams

Junior Div. Chair pro tem



MINERAL DIVISION

Garry Cannon, Chairman
Jim Parrish, Treasurer
and Door Prizes

Next meeting:
Friday, March 10, 2017

NEARLY 30 BRAVE SOULS fought the rainy cold weather and Friday the 13th perils to attend **Jim Parrish's** talk on Garnets. **Jim** did a great job with his informative presentation and slide show. He was nice enough to bring in some of his beautiful garnet specimens for us to see and admire.

The audience participation and discussion was great. Special thanks to **Kirk Feral**, **Steve Dente**, **Norm Leitman**, and **Angie Cannon** who brought in their beautiful cut gemstones and crystalline garnet specimens, including iridescent andradite, blue-violet color-change garnet from Madagascar, Malaya garnet from East Africa, and more.

Program for the next **Mineral Division** TBA. Stay tuned. We will also have our fabulous door-prize drawing. Please bring a treat to share, the Club will provide punch, coffee, and tea.

Garry Cannon

Mineral Division Chairman mindiv@sdmg.org

SDMG Library

SDMG Bldg.

Andy Anderson

Hours: 4 to 6 pm, Wednesdays

Reference use only, no lending.

Access the catalog online at:

<https://cloud.collectorz.com/sdmgmerklb/books>

Who may use the Library?

Membership is not required to view the catalog, but only **SDMG** members may come in and use the reference library.

We Need Volunteer Assistant Librarians.

Members willing to volunteer in the Library will enable us to extend the hours of access.

Contact Andy:

aanderson@sdmg.org

if you can help out.



Grossular with diopside. Vesper Peak, Sultan Basin, Snohomish County, Washington. Reinhard Rauschegger coll.

SDMG's 83rd ANNUAL BANQUET

Saturday, March 18, 2017

Donna Beers, Chair

Honored Guests: Dona and Wayne Leicht

Program: "Gold!" by Wayne Leicht

Join us for a glittering evening



Native gold specimen weighing 1.16 oz (2.8 x 2.5 x 2 cm), from El Infierno, Santa Elena, Bolivar, Venezuela. Courtesy: Kristalle.

Where: Soledad Club
5050 Soledad Rd, San Diego, CA 92109

When: Saturday, March 18, 2017

Cost: \$38.00/person

Ticket Information: See box at right

Adjustment Hour: 5:30 – 6:30 pm
Light refreshments & coffee. BYOB*

Raffle drawing: Starts at 5:45 pm

Dinner: 6:30 pm

Program: 7:30 pm
"Gold!" by Dona and Wayne Leicht

Entertainment 8:30 pm

& More Prizes: Door Prizes, Raffle, live music and dancing

Website: <http://annualbanquet.sdmg.org>

**Tickets will be on sale
through Friday, March 10th at:**

- **The Village Silversmiths' shop**
in the SDMG Building,
11:00 am to 4:00 pm daily

**Tickets available
through Monday, March 6th
by mail from Chairperson:**

- Write a check for \$38.00 per
person payable to: **SDMG**

Send your check to:

Donna Beers
14735 Calle Diegueno
Rancho Santa Fe, CA 92091

THIS IS OUR 83RD ANNUAL BIRTHDAY BANQUET. It will be an evening affair held at the **Soledad Club**, in San Diego. Our Theme and Speakers will showcase **Gold**. So, we are looking forward to an elegant event. It would be nice for people to dress up, but it is not required. If you're not in the mood to go formal, be comfortable, but be sure to wear some of your jewelry creations.

Sit on the comfy couches in the lounge at our new venue overlooking San Diego Bay and enjoy the view while being entertained by the dulcet tones of

our band, **Kemosabe**. Career highlights of band (and **SDMG**) member **Lee Bennett** (vocals and drums) include traveling with **Hollywood A-Go-Go** and playing drums for **Glen Campbell** and **The Four Tops**. Band member **Mike Truette** (vocals and guitar) toured with and opened for **Jefferson Airplane**.

Every year the door prizes at the **Banquet** are amazing. Not only do we buy prizes, but our members donate beautiful pieces for the door prize gifts. We are asking members to donate cut gemstones, beautiful cabs, and finished jewelry for door prizes.

* No alcohol available at the bar. Bring your own wine and beer and give to the bartender to serve per Soledad Club rules.

We are delighted that honorary **SDMG** members **Dona** and **Wayne Leicht** will be our special guests. In his presentation on “Gold!”, **Wayne** will show highlights from the collection of **Kristalle**.

There will be dancing after the presentation.

About Kristalle and the Leichts

KRISTALLE was established in Laguna Beach, California, in 1971, by **Wayne C. Leicht** and **Dona Lee Leicht**. Their aim was to provide a place for serious collectors to view, compare, and purchase high quality minerals, gems, and rare antiquarian books. The Laguna Beach location has expanded significantly over the years and is established among the top natural history galleries in the world.

Minerals became a passion for **Wayne** at the age of seven when **Mrs. Ruth Kirkby** of the Jurupa Nature Center in Riverside came to his classroom with specimens. His love of the lure of the California Gold Rush and gold specimens was enhanced by his yearly visits to his grandfather's cabin in Tuolumne Meadows, California, where he spent his summers panning for gold.

Almost every major museum in the world is counted among **Kristalle's** customers. **Kristalle** has been asked to dispose of specimens for museums, including the Smithsonian Institution, Washington, D.C.; the Arizona-Sonora Desert Museum, Tucson; Houston Museum of Natural Science; and the Lyman Museum, in Hilo, Hawaii. **Kristalle** has also been responsible for the disposal of 150 private collections from throughout the world, including some of the most famous and storied collections in private hands. The venerable Philadelphia Academy of Sciences sold its entire mineral and gem collection to **Kristalle** after the museum changed its mission statement.

Wayne has done appraisal work for almost all the major museums, as well as the Internal Revenue Service (IRS) and the Federal Deposit Insurance Corporation (FDIC). He also serves as a state witness and expert on gold and gold deposits for the State of California.

Wayne has given over a 100 lectures around the world about mineralogy and especially gold specimens. He has authored over 50 articles published worldwide, done television interviews across the U.S. and around the world, including one 60 Minutes interview. He is also featured on several videos about gold and minerals.



Wayne earned his degree in Earth Science at the University of California, Long Beach, and graduated with honors in 1976. He also studied physics at Johns Hopkins University. He has worked in low temperature physics for Aeronutronics (a Division of Ford Motor Company, formerly in Newport Beach, California), and he holds several patents related to an extremely sensitive magnetometer utilizing super conductive devices developed for the government.

He also served with U.S. Army Intelligence for three years in Baltimore, Maryland, and later in Washington D.C. He was responsible for the security inspections for all military installations in the Second Army area and later served as the liaison officer for the 109th Intelligence Corp Group and all other investigative agencies in the area. He continued at Aeronutronics after receiving an honorable discharge from the U.S. Army, and he continued to work with sensitive government agencies due to his top secret clearance. He left Aeronutronics in the late 1970s to pursue his career in mineralogy.

The **Leichts** have been married since 1964, and they have one son, **David**, born in 1969. In addition to minerals, their other interests include collecting rare books specializing in mineralogy, gemology, Western Exploration, Arizona History, and the California Gold Rush period. This book collection is considered the

finest private collection of its type in the United States. They also collect early California landscape paintings.

The **Leichts** have a private collection of minerals with a special emphasis on specimens of crystallized gold from all over the world. **Wayne** has earned high regard among his professional peers for his breadth of knowledge of gold specimens. He has done appraisals of gold collections belonging to Harvard University, the Smithsonian Institution, the Natural History Museum of Los Angeles County (NHM), the California State Mining and Mineral Museum, and the Houston Museum of Science. Wayne has also done appraisals for many prominent private collectors.

Wayne served as a Board member of the Gem and Mineral Council of the Natural History Museum of Los Angeles County. Both **Wayne** and **Dona** are Fellows of the Bowers Museum of Cultural Art, in Santa Ana. They are Honorary Life Members at the Arizona Sonora Desert Museum, as well as the San Diego Gem & Mineral Society, and the Mineralogical Society of Southern California. They are also members of the California Historical Society, the Geo-Literary Society, The Book Club of California, and the Surfrider Foundation, in addition to museum memberships at more than 12 museums around the world.

The **Leichts** have been actively involved with the Mineralogical Society of Southern California and have served as both President and Vice President. **Wayne** has displayed a selection of his rare book collection at a special exhibition held in conjunction with the San Francisco Antiquarian Fair at the Book Club of California Museum, in San Francisco. The **Leichts** have also participated in many special exhibitions of gold, including “Gold of El Dorado,” which was held at the NHM, and “California Gold Rush! California’s Untold Stories,” the famous 150-year anniversary exhibition produced by the Oakland Museum of California. They were participants in the “Art of the Gold Rush” exhibition at the Bowers Museum, in Santa Ana. They also loaned their private collection of gold specimens for a special exhibit at the Pacific Mineral Museum in Vancouver, British Colombia. In 2005, their collection of gold specimens was displayed at the Houston Museum of Natural Sciences. Their private collection of gold was a major display featured at the French Museum of Natural History in 2009. The collection has also been exhibited at the University

of Bonn Museum, the San Diego Museum of Natural History, and the Bowers Museum. Currently, their gold collection is on loan to the new Perot Museum, in Dallas, Texas.

The **Leichts** spend a great deal of the year traveling to mining localities around the world. They have been to almost every continent in search of specimens for their clients. Their annual show schedule includes exhibitions in Munich; Tokyo; St. Marie Aux Mines, France; Hong Kong; Denver; Tucson; and five other U.S. shows.

The **Leichts** live in Laguna Beach in a landmark home with impressive views of the coast, where they frequently host museum functions. Most recently, they hosted a reception for **Dr. Jeffrey Post**, Department Chair, Geologist, and Curator-in-Charge of the Mineral Collection, Smithsonian Institution, Washington D.C.; and **Dr. George Harlow**, Curator, Department of Earth and Planetary Sciences, American Museum of Natural History, New York. They have hosted almost every curator in the world of minerals at their home, as well as prominent collectors from around the globe. One very famous gathering featured the firm of Harry Winston, with jewels valued at 36 million dollars on display on the dining room table!

They are also special hosts for prominent visitors, lecturers, and curators from the Bowers Museum. Most recently they hosted **Carol Beckwith** and **Angela Fisher**, internationally renowned National Geographic photographers and authors, and world famous Egyptian archaeologist **Zahi Hawass**.

In a book published in 2008, the **Leicht’s** authored a chapter on famous gold localities in California. **Dona Leicht** is credited for her contribution to the famous book *A California Gold Rush History*, by **Q. David Bowers**. A recently published book on gold specimens features specimens owned by the **Leichts** and hundreds of specimens that they have sold over the years to museums and collectors around the world.

Wayne and **Dona** continue to travel the world in search of specimens.



KRISTALLE

Est. 1971

Wayne and Dona Leicht

WE ARE CASH BUYERS FOR SINGLE SPECIMENS AND ENTIRE COLLECTIONS!

875 North Pacific Coast Highway - Laguna Beach, CA 92651

949.494.5155 - fax: 949.494.0402

e-mail: info@kristalle.com



Sri Lanka sapphires. Courtesy of Pala International, photo: R. Weldon.

14th ANNUAL SINKANKAS SYMPOSIUM SAPPHIRE – Sat, April 8, 2017

Venue: GIA World Headquarters | The Robert Mouwad Campus
5345 Armada Drive, Carlsbad, CA 92008

Sponsors: Gemological Society of San Diego and GIA

Time: Badging, refreshments, 7:30–9:00am.
Symposium begins at 9:00am sharp.

Registration: \$95.00 per person; \$105.00 after March 22, 2017.

Deadline: Sunday, April 2, 2017 or until tickets sell out. No on-site registration (Valid gov picture ID required; all attendee names must be on the list at the gate – no reservations under one name).

Register: Open to ALL. Online only at:
<https://www.eventbrite.com/e/sinkankas-symposium-tickets-30657995891>
(short url: <https://goo.gl/pZ2OyC>)

Website: www.sinkankassymposium.net

***Speakers:** Edward Boehm
Dr. John Emmett
Dr. George Harlow
Alan Hart
Richard Hughes
Bill Larson
Glenn Lehrer
Shane McClure
Nathan Renfro
Dr. George Rossman
Dr. William “Skip” Simmons
Lisbet Thoresen

* *Speakers and program subject to change without notice.*



SAN DIEGO COUNTY FAIR GEMS, MINERALS & JEWELRY DEPT.

Yee-haw! We’re looking forward to another exceptional year at the **2017 Fair**, with more of your beautiful exhibits. Mount up, and get ready to enter your best.

Bring on your Lead Family minerals, a sure-fire winner, in gorgeous colors, to celebrate the Mineral of the Year.

Let’s have a regular herd of Trilobites, Fossil of the Year. Everybody loves trilobites!

Late change to Fair Theme Jewelry: You betcha there will still be a Bola Tie class, but the second Fair Theme Jewelry class has been retitled, “Where the West is Fun”. You can still take aim on the legendary wild, wild west.

Want to know *where* you should be *when*, and *what* you should be doing? Read on!

THE SCHEDULE:

Entry brochures: Available soon!

Online entry opens: Begins mid-February

Entry deadline: Fri, April 28, at 11:59 pm

Entry delivery: Sat & Sun, May 27-28,
9 am to 6 pm

First day of Fair: Fri, June 2, 4 to 11 pm

Exhibitor

Appreciation: Wed, June 7, 6 to 9 pm

Last day of Fair: Tue, July 4.

Exhibit pickup: Thu, July 6, 9 am to 8 pm

Got questions? We have answers! Contact:
Anne Schafer, Gems & Mineral Coordinator
Rich Yarbrough, Assistant Coordinator
sdfair@sdmg.org

What it means to be a Stakeholder

by Lisbet Thoresen

Public Lands Representative for San Diego Mineral & Gem Society, Inc.

Chair, PLAC-South, California Federation of Mineralogical Societies, Inc.

Part I. Club support of hobby collecting

A **TSUNAMI** of bureaucratic changes in land use policy and specific land use plan amendments has been gathering momentum in recent years. Some of the most significant, far-reaching changes on managing federal lands are in the pipeline now. Input from individual Rockhounds and their clubs and their federations will be needed to ensure that hobby collecting on public lands is going to be accommodated in the future. The **American Federation of Mineralogical Societies, Inc. (AFMS)** with its seven regional federations, represents more than 50,000 members in aggregate throughout the United States. If each and every club would write or sign onto comment letters drafted by other clubs or regional federations, it would benefit the Rockhound community at large. While individuals make a difference by weighing in on the proposed changes, the participation of special interest groups help elevate their members to Stakeholder status. Clubs, by definition, are special interest groups, and gem-mineral-lapidary clubs need to invest more effort into their role as a Stakeholder.

Who are Stakeholders?

Federal agencies recognize groups that have or represent special interests. They are referred to as “Stakeholders” – they can be non-profit organizations or even other governmental agencies. Yes, governmental agencies submit comment letters on Proposed Rules under Statutes administered by other agencies – sometimes they even sue each other. For example, in 2015, the **EPA** wrote a very critical comment letter on the **Desert**

Renewable Energy Conservation Plan (DRECP), which was drafted jointly by five State of California and federal agencies.

Why is being a Stakeholder important?

Federal agencies recognize “Stakeholders” as having authority, expertise, or special interest to contribute input on a regulation or policy. In other words, Stakeholders have some gravitas in the Rulemaking process. It will be difficult for Rockhounds to achieve critical mass on their own – to be treated as a Stakeholder group – if they are perceived as being a disaggregated assortment of isolated individuals instead of an organized community capable of communicating a coherent message in a unified manner. The support of clubs is vital to lending authority and credibility to values shared in common by its constituents and by its federation affiliate clubs.

To be sure, the efforts of individuals and a small number of clubs have been rewarded lately. In May 2016, **Senator Dianne Feinstein** (D-California), wrote a letter to **Secretary of the Interior Sally Jewell** in full-throated support of Rockhounding in three newly created National Monuments in California.[1] She suggested accommodation of Rockhounding should be considered for Monuments designated in the future. As one of the most influential legislators championing protective designations for public lands, **Senator Feinstein’s** endorsement of Rockhounding as an activity whose values are compatible with protective land designations is perhaps more consequential than that of any other public servant, except the President.

-
- 1.) http://www.sdmg.org/articles/201702/what-it-means-to-be-a-stakeholder/Feinstein_to_Jewell_support_rockhounding_CalNatMonuments_20160512.pdf or short url: <https://goo.gl/p7LPpQ>.

If your club would like to reproduce this article, please cite the original source:

L. Thoresen. What it means to be a Stakeholder. The Pegmatite, bulletin of the San Diego Mineral & Gem Society, Inc. February 2017, pp. 9–12.

Another milestone win for Rockhounds occurred in 2016. Significant changes were made in the final Phase I Record of Decision (ROD) for the **DRECP** to accommodate Rockhounding where it was vulnerable to exclusion in the Proposed Plan (figs. 1a, b). This was no small feat. The **DRECP** is the most significant land use plan amendment in California state history. On September 13, 2016, the day before the ROD was signed, a conference call was held during which **Vicki Campbell**, **BLM** program manager for **DRECP**, attributed some changes made in the ROD to the high number of detailed comment letters received from Rockhounds during the public comment period. (**SDMG** and **CFMS** co-authored a comment letter.)

The scope and volume of land use amendments and policy changes are so numerous and so far-reaching, individual Rockhounds cannot be expected to succeed in holding ground if they have to go it alone. They will need their federations and clubs to support them – not only by articulating the values of the community at large, but also by addressing specific provisions of Proposed Rules via public comment under the Rulemaking process.

Part II. Legislation is not administrative regulation

Gem-mineral-lapidary clubs could help their Rockhound members enormously if they would write comment letters or sign onto comment letters drafted by other clubs or regional federations. The number of Rockhound boosters represented in aggregate is not trivial. Yet, if their impact could be so consequential, why have so many clubs been reticent about writing or supporting comment letters, which would elevate the community at large to Stakeholder status? Some

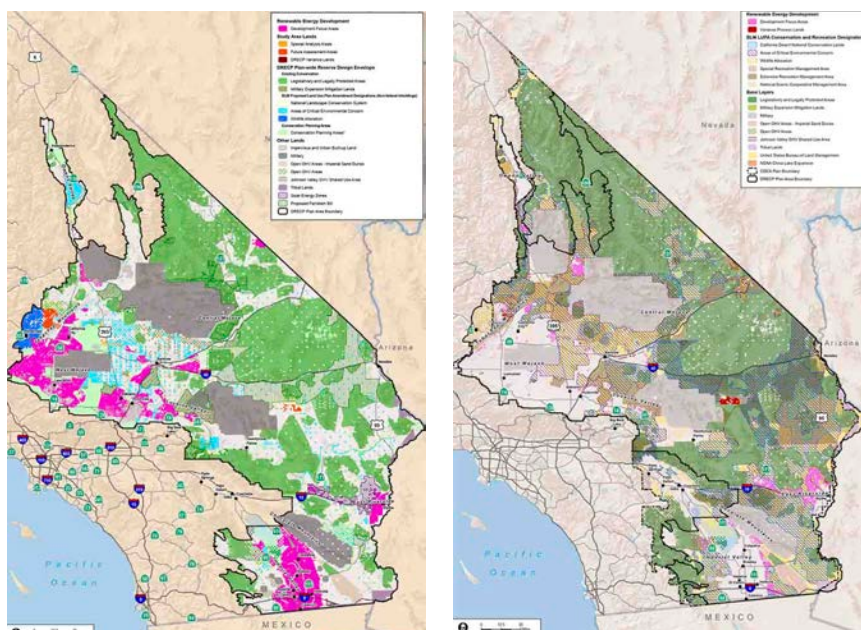


Fig. 1a (left): Draft DRECP Preferred Alternative - Conservation Plan. Bright magenta-colored areas are DFAs, i.e., land available for utility scale projects, some of which are adjacent to rock collecting areas. Fig. 1b (right): Final DRECP – Conservation Plan. DFAs were revised significantly where they conflicted with rock collecting areas identified in comment letters to the DRECP.

gem-mineral-lapidary clubs fear they may jeopardize their 501(c)(3) non-profit status if they submit public comments on land use plan amendments or proposed regulations under the law. They worry that public comment is the same thing as political speech or lobbying. Out of an abundance of caution they stay silent on regulations that may restrict hobby collecting; although, opportunity for the public to give input is mandated by law.

Let's clear up the confusion or misunderstanding about non-profit status, political speech, and public speech. The **IRS** Web site sets some bright lines for reference: two areas where 501(c)(3) non-profit organizations need to pay careful attention are 1.) involvement with political activities (influencing or participating in political campaigns or candidates running for office) and 2.) legislative activities, i.e., lobbying.[2] Political speech may be public speech, but public speech is not generically political speech. According to **IRS** rules, political activities are not relevant to this discussion, so let's take that off the table.

2.) <https://www.irs.gov/charities-non-profits/lobbying/>.

The confusion seems to concern lobbying, which the **IRS** defines as the effort to influence passage or defeat of pending legislation or to change existing statutes (laws) through the legislative process. Fundraising is a feature of lobbying that draws the critical scrutiny of the **IRS**, but that is not relevant to this discussion, either.

Is there a difference between lobbying and making public comments on a Regulation under a Statute (a law passed by Congress)? The short answer is “Yes.”

Legislation passed by Congress has a ways to go before it becomes an actionable Statute. A bill is often written in general or broad language. It frequently lacks sufficiently specific or detailed provisions needed for administrative agencies to know how to enforce it, so Rules are drafted to guide agencies on the practical application of the Statute.

Congress passed the **Administrative Procedures Act of 1946 (APA)** so that the drafting of the specific details – or Rules – under a Statute, would be performed in a structured manner and would be publicly accessible. The **Federal Register** Web site is the repository for all things related to Rules and Regulations under Law, including a searchable archive. The steps in the Rulemaking process itself must be published in the **Federal Register**. If it's not in the **Federal Register**, it's not official.

The **APA's** function is non-partisan – its activities are by definition administrative, not legislative. It sets forth a Rulemaking process for drafting the specific Regulations applicable under a Statute. To be clear, Rulemaking is an administrative process that occurs after the legislative process has been completed. Therefore, participating in the **APA's** Rulemaking process by making public comments is not germane to **IRS** rules on lobbying, which is defined as a legislative activity. Rulemaking under a Statute does not provide opportunity to support or oppose the Statute. That ship sailed along with the opportunity to lobby when the Statute was passed. Also, Rules written under the Statute cannot overturn it. To do that, one has start the legislative process all over again. [A summary of the](#)

[Rulemaking process](#) can be downloaded from the **Federal Register** Web site.(3) It states:

“The notice-and-comment process enables anyone to submit a comment on any part of the proposed rule. This process is not like a ballot initiative or an up-or-down vote in a legislature. An agency is not permitted to base its final rule on the number of comments in support of the rule over those in opposition to it. At the end of the process, the agency must base its reasoning and conclusions on the rulemaking record, consisting of the comments, scientific data, expert opinions, and facts accumulated during the pre-rule and proposed rule stages.”

Public comments under the Rulemaking Process

Recognizing that the public should be afforded opportunity to give input, the **APA** requires the administrative agency to “give interested persons an opportunity to participate in the rulemaking through submission of written data, views, or arguments” (5 U.S.C. § 553(c) (2006)), especially, when a person's own interests might be affected or when a person might have special expertise whereby constructive input could improve the Final Proposed Rule.

Under § 551. Definitions, (2), “‘person’ includes an individual, partnership, corporation, association, or public or private organization other than an agency.” In other words, comments may be made by anyone, including individuals, corporations, advocacy groups, and other governmental agencies.

Are 501(c)(3) non-profit organizations or clubs “interested persons”? Yes.

The comment period under the Rulemaking process of the **APA** is the federally mandated vehicle for receiving input from “interested persons” and incorporating it into the writing of regulations under a Law. Again, providing opportunity for public comment is an administrative activity explicitly required under **APA**. It is not a political

3.) https://www.federalregister.gov/uploads/2011/01/the_rulemaking_process.pdf.

or legislative activity. [The Federal Register reiterates the APA](#): “The proposed rule and the public comments received on it form the basis of the final rule.”[4]

It could be argued that not providing comment on regulations that affect “interested persons” is a dereliction of responsibility. At least, there can be little justification for complaint after the fact. And certainly, it is easier to get a regulation drafted the way one would wish in the first place than having to litigate or lobby for changing it after it has been made final.

Concerning public lands access, in general, and hobby collecting, specifically, Rockhounds have been doing better advocating their own interests, but they have yet to be effective at asserting their Stakeholder status. If Rockhounds hope to hang onto the accommodations that they have enjoyed for decades but may lose in the coming months and years in the face of an impending regulatory tsunami, they are going to have to assert their Stakeholder status, and they are going to need their clubs to speak up on their behalf to do it.

4.) See note 3.

SAVE THE DATES
February 24-25, 2017

Needles, CA

BLM Field Tour

Date: Friday, February 24, 2017

Time: 10:00am to 5:00pm

Meeting location: TBA

**California Desert District
Advisory Council (DAC) meeting**

Date: Saturday, February 25, 2017

Time: 8:00am to 5:00pm

Meeting venue: TBA

Members of the public are welcome. They must provide their own transportation, meals and beverages. Final agendas for the Friday field trip and the Saturday public meeting, along with the Saturday meeting location, will be posted on the BLM Web page when finalized.

This meeting will be an important updating of the Management Plan for Mojave Trails National Monument and major federal land use planning efforts. Rockhounds, don't miss this meeting. Put the dates on your calendar!

For more information contact:

Stephen Razo

BLM California Desert District External Affairs
951-697-5217 or srazo@blm.gov

Web site short url:

<https://www.federalregister.gov/d/2017-01340>

**Stay current
with [News.bytes](#)**

The BLM California newsletter

Editor's Note: The BLM's website, including the online newsletter, News.bytes, is undergoing long term maintenance. This overhaul has been going on since the Fall of 2016. These are important and useful resources.

Email BLM and tell them that getting their resources back online should be a high priority:

<https://blmca.sites.usa.gov/contact-us/>



The "Elephant Knees" above the Mud Hills, Fish Creek, Carrizo Badlands, Anza Borrego State Park.
Art based on a photo by Andrew Hoekstra.

***Thanks to all who contributed to the comment letter
on a Proposed Rule under the PRPA
by the Southern California Paleontological Society (SCPS)***

THE COMMENT PERIOD on the Proposed Rule under the **Paleontological Resources Preservation Act of 2009 (PRPA)** closed on February 6, 2017. The Proposed Rule (Docket No. NPS–2016–0003. RIN 1093-AA-16) is expected to have broad application to hobby collecting of invertebrate fossils, rocks, and minerals on federal lands. It specifically targets casual collecting on **BLM**-administered lands, but this top-down Rule will be applicable to federal lands administered by other agencies and will include lands administered under protective designations such as National Monument, Wilderness Area, etc.

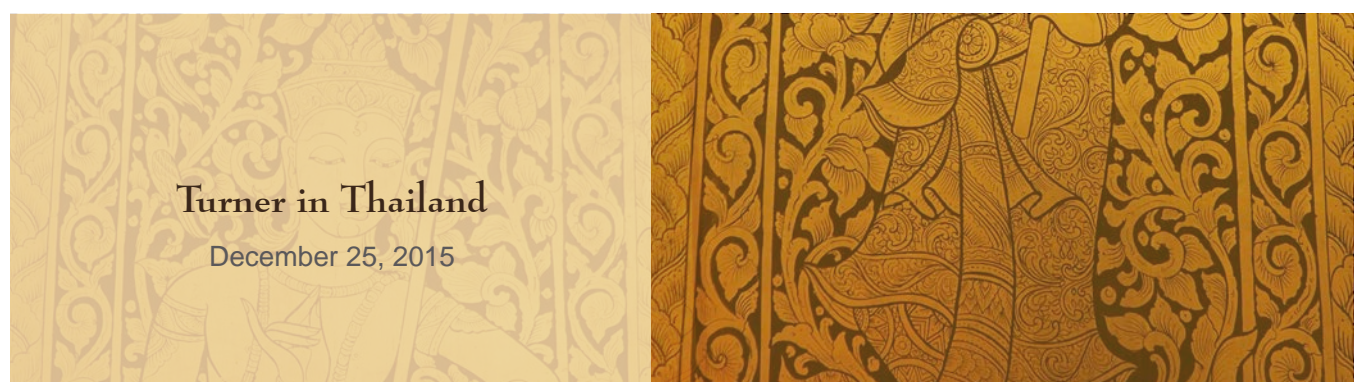
Karol McQueary, President of **Southern California Paleontological Society (SCPS)**, took the lead on preparing a detailed comment letter. Several individuals contributed input to it, including **Andrew Hoekstra**, **CFMS** Paleontology Resources Specialist; **Lisbet Thoresen**, **CFMS** PLAC-South Chair; **Linda McCall**, President, **North Carolina Fossil Club**, Raleigh, NC; and **Mike Nelson**, **RMFMS** PLAC Chair.

Jennifer Haley, **CFMS** 1st Vice President, led the effort to get the word out about the Proposed Rule under **PRPA** and the **SCPS** letter. She worked tirelessly from December through the first week of February, with help

from the contributors who assisted **Karol** in drafting the letter. Non-profit clubs/organizations and credentialed professionals were encouraged to sign onto the **SCPS** letter to show the **Department of Interior** that it carried the authority of broad-based support.

The effort was productive. Recognizing that the Proposed Rule has such far-reaching application to hobby collecting of fossils and rocks and minerals everywhere, the final letter submitted on February 3rd had 64 signatories. They represented gem-mineral-lapidary-fossil clubs throughout the United States, including **San Diego Mineral & Gem Society, Inc.** Signatories also included professional geologists and officers or chairs of **AFMS** and five of its seven federations, including **CFMS**, **EFMLS**, **NFMS**, **RMFMS**, and **SFMS**. Several non-profit groups also signed on, including **American Lands Access Association (ALAA)** and **Stewards of the Sequoia**. Thanks to one and all who contributed to or signed onto the **SCPS** comment letter.

The final letter as submitted will be posted on the **BLM** Web site. It may also be viewed online now at: http://www.sdmg.org/blmdocs/SCPS_PRPA_comment_letter_20170203_final.pdf or at the short url: <https://goo.gl/Rewue6>.



Turner in Thailand

December 25, 2015

THIS ARTICLE IS THE SEVENTH INSTALLMENT of Denny's travels and training at Wat Sri Suphan, in Chiang Mai, Thailand.

MERRY CHRISTMAS FROM CHIANG MAI! It's 85° F here and humid, so, it's a little different from where you are most likely. Vera and I are missing San Diego weather and Christmas atmosphere. Christmas is mostly celebrated by tourists and expats here; although, many of the stores and shops have Christmas decorations and trees up, and a few are playing Christmas carols. The major department stores look pretty much as they do at home, even if the sales are listed as "year end" sales and not "holiday" or "Christmas" sales. And there is not a whiff of Hannukah, or Eid here. Even our expat-oriented residence hotel has a tree decorated with lights and presents under it.

For Christmas Eve Vera and I went out hoping to find someplace to eat, but our favorite hole-in-the-wall restaurant was closed for the day. We needn't have worried, because it was pretty much like any other night, and most places were open. We ended up having Thai dinner at a restaurant that is decorated in massive amounts of pink and red roses ("florid" is the correct word), and looks a little like a bordello. But it's got pretty good food, and the service is great. We both had roasted duck in a sauce, preceded by a "Hot Plate" of fried won-tons, spring rolls, and crab cakes. Vera had white wine and I had ginger ale. It was pretty tasty, and there was a line to get into the restaurant as we left, which is usually a good sign for a place to eat.

Tonight we are joining an expat friend at a French Restaurant for Christmas Dinner. This will likely be the most expensive dinner we have here as it's a *prix fixe*, eight-course menu featuring our choices of roast beef or sea food medley, with French

sounding veggies, salads, seared foie gras, shrimp and "clobster" (sic) soup and well-sauced pastries for dessert. Should be scrumptious. We lazed around the room today watching "It's a Wonderful Life" on TV and catching up on sleep and emails.

Last weekend we hired a tuk-tuk for the day and ventured off to Sankamphaeng, a little touristy suburb of Chiang Mai. We visited a wood-working factory, the Shinawatra silkworks, and the umbrella factory and shop.

Our tuk-tuk driver was a lady (pretty unusual) and friend of Kim, our hotel desk lady. It was fun to get out of the old town and see some of the rest of greater Chiang Mai (which is the second largest city in Thailand). It's about 8 to 9 miles to Sankamphaeng, and we knew going in that it was mostly a tourist trap. But we thought it would be an enjoyable trip anyway. And we did, for the most part.

The wood carving factory was stellar and serves as a modern lesson in Thai history. They work in Thai hardwoods (teak, mahogany, et cetera). The factory has been here for more than a generation, and the owner has hired some of the best carvers around. The quality of the work is just amazing. They do 10-seat table settings in which the entire table top is a carved scene and the back of each chair is a unique carving. They make boxes and chests, with incredible dove-tailed joinery. End tables are inlaid with precious woods and mother of pearl. There are folding screens for room dividers, entry doors, and many smaller things for tourists with limited baggage capacities (like us). You can also order custom designed work – at least for a while. We saw a log of mahogany that was over three feet thick and 300



hundred years old (not for sale). Given what they offer, the prices are amazingly low.

We got there on a Sunday, and we were shown around by a lady who told us most of the workers were not there that day. But, we got to see not only the show room, but also the carving area where a few artists were at work. But another reason there were few workers around is that the factory is closing down. We were told that the owner has surrendered to the pressures of land development and is selling the entire premises to someone who will put houses on the land. The yards are pretty much closed down. Only a little new work is being finished up. They are selling what is in the show rooms. Within one to two years they will have sold everything, and the place will no longer exist. I asked what will happen

to the craftsmen and women who work there. And I was told, “They will no longer have a place to work in Chiang Mai.” All of the workers we saw were in their 50s or 60s. As with so much hand crafting in Thailand, the young people do not want to learn these arts, because the pay is so low. They want to be engineers or lawyers, or computer operators, or tour guides. And the factories that employ them are closing down. In another 15 to 20 years these arts will have died out. I wish I’d had an extra \$5,000, because I would have bought a dining setting or something else. We learned later from our expat Australian friend that last year he had seen stacks of carved wooden chests for \$200–300. There were none left for us to see. Somebody swooped in and bought them all up, and they are probably sitting in some warehouse in Hong Kong or New York where the prices will likely skyrocket, because nobody is making this kind of thing anymore. This is modern Thailand in transition.

The Shinawatra silk store has a small demo area where they show how silkworms weave their cocoons, how the silk is then “reeled” from the cocoons into thread, and how it is dyed and woven. They have a couple traditional hand looms worked by ladies to show how it was done historically. While Thai silk has been made in this area for many generations,

the company's main factories are now located in another part of eastern Thailand. The silkworms are produced at an industrial scale, and the eastern climate is conducive to the large amounts of Mulberry leaves that are the sole source of food and habitat for the silkworms. The commercial production of silk is also done in industrial scale facilities and the weaving uses computer-controlled industrial looms. Silk is produced in several grades. The best Thai silk is considered some of the best in the world. The colors and weaves and textures are truly gorgeous. This cotton and polyester guy now has a new-found appreciation for high quality silk. The Shinawatra store has a fair selection of ready-to-wear garments and a selection of bolted cloth one can buy for custom tailoring. We suspected the prices were high for the tourists and learned later that this was a correct assumption. But, Vera spent considerable time looking at things and ended up with a couple of ready-made skirts of silk batik and a couple meters of cloth. Later, she contacted a local tailor recommended by Kim, our desk lady, and Vera and this lady went to another store in Chiang Mai where they had a larger selection of top-quality fabrics at nearly 50% off the Shinawatra prices. So, she bought more silk and is having a couple outfits done for herself and one sister. It's still an expensive proposition, but the costs here and availability of really fine silks makes it worthwhile to Vera. I deferred having \$100 shirts made up, however. For those of you interested in silk, Vera says she's been told that silk garments do NOT require dry cleaning (but can be). They should be hand washed (without wringing) and when three-quarters dry, they can be ironed.

After lunch at a pleasant noodle shop, we visited the "umbrella factory." At this place, paper umbrellas are made by hand and painted many colors. You can watch the several steps in carving and shaping the wooden handles, the shaving of the spokes for the parasol, and the threading onto which the paper is stretched. They make their own paper from the pulp of a particular shrub-tree. The stems are crushed and soaked and boiled and finally spread out on screens to dry. Dyes are added to the pulp before drying. It resembled the elephant poo paper process I wrote about previously. After the umbrellas (of many sizes) are prepared, they may be painted with pictures and designs. The factory has a dozen workers who do



Silkworm cocoons being prepared so the delicate thread can be spun.

this, and each has his or her own pallet of designs. And you can ask them to paint your purse, or T-shirt, or camera bag for a small fee, too. The store sells umbrellas and lots of the small junky kinds of stuff we see at the Walking Street outlets. We both bought sets of traditional fans, with carved bamboo elements, not painted.

We decided we were too tired and broke to visit the jewelry and gemstone markets, so our tuk-tuk driver brought us home in the mid-afternoon.

Another reason not to visit the touristy jewelry shops is that our hotel is located in the heart of the silver district of Chiang Mai. The Wat Sri Suphan, where I've been taking classes, serves the Wulai people

who live in this community. They have been silversmiths for generations and there are many excellent, small shops located nearby that have prices not marked up for the big shops in the main tourist areas. If you buy a piece here, you likely are getting something made by the person from whom you are buying it.

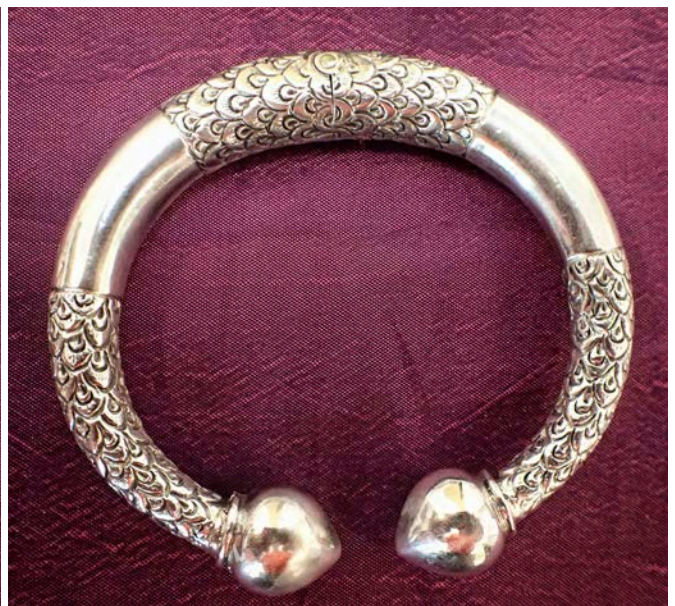
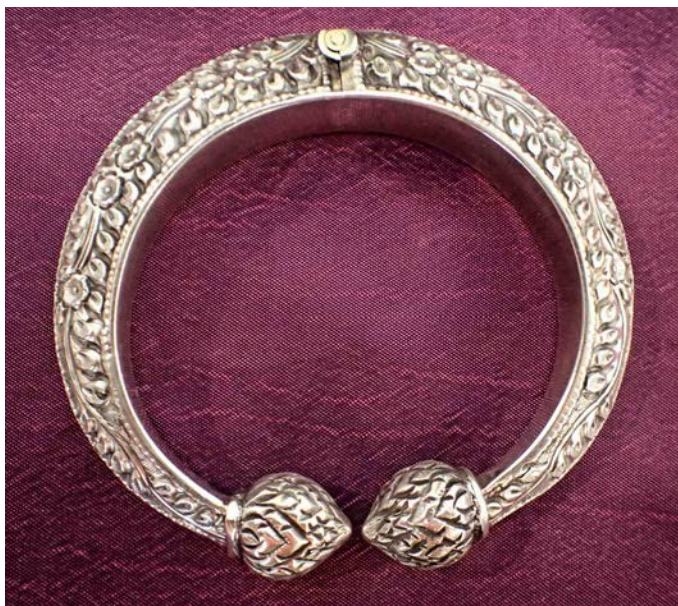
While visiting the small gift shop at the wat, we discovered for Vera a really nice sterling silver necklace and bracelet wrought with delicate chasing and repoussé work. The caretaker at the gift shop told us these pieces had been made by a member of the congregation and been donated to the wat. They had languished in the gift shop for nearly 15 years (most tourists don't visit the wat's gift shop, and local folks may be making their own jewelry). So, for that reason, and the fact that I am sort of a regular around the wat now, we got a very nice price and an outstanding pair of pieces. They didn't have something for me, but a couple days later I found at one of the local shops a lovely, masculine sterling bracelet for myself. Both the bracelets for Vera and me have a spring-loaded break in the middle, which allows them to be opened and fit easily on our wrists. We are quite pleased.

Many of the local shops have fine work. Some specialize in exquisite filigree work. Others make both small silver bowls (and larger



aluminum bowls) with chasing and repoussé work all over their surfaces. If one scans the shelves carefully, you can find antique silver boxes, bowls, silver belts, and other items that might be 50 to 75 years old. I think I wrote earlier about a 50 year-old Cambodian .900 silver box with which I've fallen in love. It is small, just 7 × 5 × 4 inches. The chasing and repoussé work is just exquisite, delicate, and perfect. And I can have it for only \$2,000 (first asking price). Sigh!

We wish you a blessed Christmas Day with joy and happiness.



ON THE GO ... TO A SHOW



FEBRUARY

17–26 INDIO, CA – San Geronio Mineral & Gem Society Annual Show

Venue: Riverside County Fair & National Date Festival

82-503 Hwy 111, Indio, CA 92201

Gem & Mineral Building

Hours: Daily 10am - 10pm

Admission: Adults \$9, Seniors \$8, Students \$7, Children under 5 Free

Contact: Bert Grisham, 951-849-1674

or bert67@verizon.net

Website: www.datefest.org

Login to the SDMG
member website
to view the master calendar
for 2016-17
www.sdmg.org/sdmg-members/

1/27– Pueblo & Mineral Show

Where: Riverpark Inn, 350 S. Freeway
(Congress St., South Frontage Rd.)
Tucson, AZ 85745

Hours: 10:00am – 6:30pm daily

Parking: Onsite and valet.

Contact: info@pueblogemshow.com
or 310-586-6816.

Website: www.pueblogemshow.com

Centrally located in downtown Tucson one block from the Convention Center in “The Golden Triangle.” It is known as the most diverse gem, jewelry and mineral show in Tucson, with US and international exhibitors of designer and fine jewelry, cut and rough gemstones, pearls, beads, silver, turquoise and amber, as well as rough and fine mineral specimens.

2017 in TUCSON Selected Gem & Mineral Shows

*Alphabetical Listing of all Tucson Shows
January through February*
www.tucsongemshows.net/coming.html

and at:

Gem, Mineral & Fossil Showcase:
Join The World’s Largest Treasure Hunt

Contact: 800-638-8350

Website: www.visittucson.org

For detailed listings of all the dealers, venues, and show dates, search the schedule at the show website.

TUCSON - selected shows

1/26– Tucson 22nd Street Mineral & Fossil Show (Eons Expos)

Where: Corner of I-10 & 22nd Street, Tucson, AZ

Hours: 9:00am – 6:00pm daily

Admission and Parking: Free.

Website: www.22ndstreetshow.com

Wholesale and retail, 220 dealers, plus food vendors, handicapped accessible.

JOHN E. GARSOW gems & minerals

January 28 – February 11, 2017
Martin Zinn Expositions & LLD Productions
Arizona Mineral & Fossil Show

Tucson, AZ

The Hotel Tucson City Center
(Formerly The Inn Suites)

475 N. Granada

NEW ROOM # 118

Tucson AZ 85701

Facet Rough • Cabbing Rough

Jewelry • Mineral Specimens

www.johngarsow.com

1/28– **Arizona Mineral & Fossil Show**

2/11 **Hours:** 10:00am – 6:00pm daily, except Sat, Feb. 11, 10:00am – 5:00pm
Admission and Parking: Public welcome, free.
Contact: mzexpos@gmail.com
Website: www.mzexpos.com
 Over 400 Dealers, Fossil Hall, Meteorite Dealers, Minerals, Gems and Jewelry. Artists Gallery and Art in Stone display.

– **Three locations –****(1): Hotel Tucson City Center**

(formerly InnSuites Hotel)
 475 N. Granada Ave. Tucson, AZ 85701
 (St. Mary's Rd and Granada Ave.)

(2): Mineral & Fossil Marketplace

333 N. Oracle Rd. Tucson, AZ 85705

(3): Ramada Limited

665 N. Freeway, Tucson, AZ 85745

1/27– **Rapa River Gem & Mineral Show**

2/12 **Where:** 1179 - 1211 S. Freeway Ave.
 (S. Freeway Ave. between Congress St. & Starr Pass Blvd.) Tucson AZ 85713
Hours: 9:00am – 6:00pm daily
Admission and Parking: Shuttle service; handicap accessible.
Contact: Lynn Arriaga at 520-256-2079 or Tyo Leonard at 480-593-3439;
 or rapagem@yahoo.com
Website: www.rapariver.com

If you can't find it here you won't find it anywhere. Rapa River dealers offer a wide variety of many unique and unusual products from all parts of various countries represented by 34 vendors.

1/27– **Kino Gem & Fossil Show**

2/12 **Where:** Tucson Electric Park, Kino Sports Complex, 2500 E. Ajo Way, Tucson, AZ 85702 (Ajo Way and Kino Parkway)
Hours: 10:00am – 6:00pm daily, except Feb 12, 10:00am – 4:00pm.
Admission and Parking: Acres of free parking, free shuttle service; handicap accessible.
Contact: info@as-shows.com
Website: www.as-shows.com
 Over 200 vendors of gems, minerals, fossils, beads, findings, jewelry, and one-of-a-kind specimens, as well as lapidary equipment, supplies and tools.

FEBRUARY3–6 **13th Annual Westward Look Mineral Show**

Where: 245 E. Ina Rd., Tucson, AZ 85704
Hours: 10:00am – 6:00pm, except on the final day, 10:00am – 5:00pm
Admission and Parking: Free.
Contact: info@finemineralshow.com
Website: finemineralshow.com

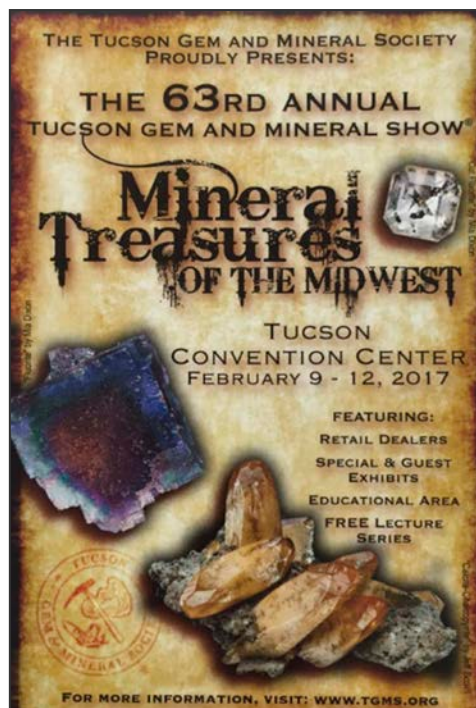
Forty world-class dealers gather every year at the famous Westward Look Resort to showcase some of the most exceptional mineral specimens found anywhere in the world.

9–12 **63rd Annual Tucson Gem & Mineral Show**

“Mineral Treasures of the Midwest”

Sponsor: Tucson Gem & Mineral Society
Venue: Tucson Convention Center, 260 South Church Avenue, Tucson, AZ 85701
Hours: Thu thru Sat 10:00am – 6:00pm, Sun 10:00am – 5:00pm.
Admission and Parking: Adults \$13.00, Children 14 and under Free with paying Adult (2-day ticket available for \$22.00)
Info/coupon: See website for coupon code.
Website: www.tgms.org

The largest, oldest and most prestigious gem and mineral show in the world, featuring 250+ dealers.



MARCH**3–5 NEWARK, CA****Mineral & Gem Society of Castro Valley's
69th Annual Jewelry, Gem and Mineral Show****Venue:** Newark Pavilion

6430 Thornton Ave., Newark, CA 94560

Hours: Fri and Sat 10:00am – 6:00pm;

Sun 10:00am – 5:00pm

Admission: 3-day pass \$10.00; under 13 Free
with paying Adult. Free Parking.**Contact:** info@mgscv.org**Website:** www.mgscv.org**4–5 ARCADIA, CA****Monrovia Rockhounds****Annual Gem and Mineral Show****Venue:** Ayers Hall, Los Angeles County

Arboretum & Botanic Gardens

301 Baldwin Ave, Arcadia, CA 91017

Hours: 9:00am – 4:30pm daily**Admission:** included in Arboretum Entrance
Fee – Adults \$9.00; Seniors and Students \$6.00;
Children 5-12 \$4.00. Parking is \$5.00.**Contact:** Jo Anna Ritcheyor joannaritchey@gmail.com**Web:** www.moroks.comDisplay Cases, geode cracking, kids' corner,
teachers' resource center, treasure wheel, raffle
Free tumbled stone for each guest.**4–5 VENTURA, CA****Ventura Gem & Mineral Society****55th Annual Gem, Mineral, Fossil and
Lapidary Show****Venue:** Ventura County Fairgrounds, 10 W.
Harbor Blvd.**Hours:** Sat 10:00am – 5:00pm;

Sun 10:00am – 4:00pm

Contact: Terry Wilson, 805-312-8467or info@VGMS.org**Web:** www.vgms.orgExhibits of minerals, fossils & lapidary arts; on-
going demos of lapidary arts & jewelry making;
raffle & silent auctions; a "Country Store" white
elephant sale and plant sale; kids' activities. A
Southern California tradition for 55 years!**10–12 VICTORVILLE, CA****Victor Valley Gem and Mineral Club
Annual Show****Venue:** Stoddard Wells Rd.**Hours:** Fri and Sat 9:00am – 5:00pm;

Sun 9:00am – 4:00pm

Admission: Free.**Contact:** Brett Ward, 760-948-1232or bretts88@verizon.net**Web:** www.vvgmc.orgEvent is an outdoor/dry camping venue in
Mojave desert beneath the Verde Antique Marble
Quarry atop Stoddard Mtns.**11–12 SAN MARINO, CA****Pasadena Lapidary Society****2017 Pasadena Lapidary Show****Venue:** San Marino Masonic Center

3130 Huntington Drive, San Marino CA 91108

Hours: Sat 10:00am – 6:00pm;

Sun 10:00am – 5:00pm

Contact: Marcia Goetz, 626-260-7239or joenmar1@verizon.net**Web:** www.pasadenalapidarysociety.org62nd Annual Tournament of Gems will feature
exhibits, demonstrations, and dealers. There will
be faceted gems, jewelry, minerals, beads, kids'
games; grab bags, silent auction, free hourly door
prize drawing, and raffle prizes.**MARCH–APRIL****30–2 JOSHUA TREE, CA****JT Sportsmans Club****Annual Show****Venue:** Sportsmans Club

6225 Sunburst Ave, Joshua Tree, CA 92252

Hours: 8:00am – 6:00pm daily**Admission:** Free.**Contact:** Wayne Hamilton, 760-366-2915or jtsportsmans@ymail.com**Website:** www.jtsportsmansclub.comWholesale and retail show featuring fine jewelry,
precious and semi-precious gemstones, millions
of beads, crystals, gold & silver, minerals, and
much more at a great prices. Exhibitors from
around the world. Jewelry repair and cleaning
while you shop.

41st Annual Stoddard Wells Rock Hound “Tailgate”

Friday, Saturday & Sunday, March 10–12, 2017

Sponsor: Victor Valley Gem and Mineral Club

Venue: Stoddard Wells Road
Victorville, CA (near I15)

Hours: 9:00am – 5:00pm daily.

Admission: Free. Public welcome.

Contact: 760-243-2330

Website: www.vvgmc.org/tailgate.html
(directions/map)

Dealers: All Vendor spaces are FREE on a first come basis.

Details: Handcrafted and faceted jewelry, slabs and cabs, findings and equipment, minerals and fossils and TONS of Rough Material.

FAMILY Field Trip: Tri-Colored Marble Saturday, March 11, 2017

Mtg Place: VVGMC Tailgate site off of Stoddard Wells Road (see website map)

Mtg Time: 9:00am

Contact: Jim Fosse, Wagon Master at:
info@vvgmc.org

Website: www.vvgmc.org/tailgate.html

Materials: Tri-colored marble on surface and in seams; digging and hard-rock mining required for choice specimens.

Bring: Gloves, spray bottle (water), rock pick, lunch, safety glasses, and adequate drinking water.

Conditions: Desert conditions, snakes; 4WD vehicles w/ high clearance advised. Easy to mod. hiking with material avail. within 100 yards of the vehicles; limited to participants age 8 or older.

ALAA Meeting QUARTZSITE

January 20, 2017

TWENTY HARDY ATTENDEES braved a downpour to venture out to the **American Lands Access Association (ALAA)** meeting. The talk was presented by **Lisbet Thoresen**, Public Lands Representative for **San Diego Mineral & Gem Society** and PLAC-South Chair for **CFMS**. The subject was about a Proposed Rule under the **Paleontological Resources Preservation Act of 2009 (PRPA)**. (Comment period deadline: February 6, 2017.) Because the Proposed Rule has far-reaching implications that will affect hobby collecting of fossils, rocks and minerals on federal lands in the United States, about 60 members representing regional federations of the **AFMS** and affiliated clubs throughout the US have supported a comment letter prepared by the **Southern California Paleontological Society**. Six attendees rallied their clubs/organizations to sign onto the letter.

The final comment letter submitted to the **BLM** with 64 signers can be viewed on the **SDMG** Web site at the short url: <https://goo.gl/Rewue6>.

5th Annual BLM-Sponsored Clean-Up

Sunday, January 22, 2017

Interstate 10 at Gold Nugget Road

BILL ALEXANDER is the head ranger of the Yuma **BLM** Field Office who selects a clean-up site that is blighted by trash and litter on **BLM** land adjacent to Interstate 10 near Quartzsite. This year, **Bill** chose Gold Nugget Road, which was the original clean-up venue. (Who says you can never go home, again?)

It was a cold, wet weekend, so just seven good samaritans showed up on Sunday. They spent two hours collecting trash. Once again, there was plenty of it waiting to be picked up.

Thanks on behalf of Rockhounds everywhere to the stalwart few who braved the elements to do some good.

SDMG BOARD MEETING HIGHLIGHTS

January 16, 2017

In attendance: President Shirley Leeson and Board members Andy Anderson, Donna Beers, Rocio Bergum, Tim Bickford, Bob Hancock, John Kruzell, Wayne Moorhead, Jim Parrish, Doug Peeler, Ellen Riceman, Anne Schafer, Dave Smith, Jennifer Stapp and Paul Williams. A quorum was present. **Excused:** Garry Cannon, Lois Lukasky, Sally Parrish and Dee Smith. **Absent:** Jill Williamson. **Guest:** Letty Evans.

President: Shirley Leeson reported that the First Vice-President of the CFMS is the new manager of Camp Zzyzx. Shirley requested assistance obtaining programs for the General Meetings.

Treasurer: Anne Schafer reported receipts of \$14,673.77 and disbursements of \$13,371.85 between Nov. 21, 2016, and Jan. 16, 2017, resulting in a gain of \$1,301.92 for the period.

Mineral Division: Motion carried unanimously to move the Mineral Division meeting night to the second Friday of the month in alternate months, beginning in Jan. 2017.

Membership: Total membership as of this date is 656, including 28 honorary and life members, as well as 42 Junior members.

Juniors: Paul Williams reported that Junior Counselor Lois Lukasky had undergone cataract surgery, and Juniors's Assistant Marvin Dillard was in the hospital. Paul handled the two most recent Junior Saturday classes, and suggested that the Society needs to think about finding additional Junior instructors. Paul requested a copy of the key to the Junior rock box.

School Director: Wayne Moorhead reported that the V-5 faceting head was repaired, and that the Facetron faceting head was serviced and a new dial indicator added. More RI fluid was bought. Wayne ordered one industrial floor mat to test out its suitability for use in the Cab Room. The 18" slab saw has a problem, either the pump or the tubing is clogged. Wayne made a new gutter for the saw, and he and Tim Bickford will install it.

Building Superintendent: **Tim Bickford** reported that he repaired the Silver Room wall; Miguel Asmer donated screws for that work. Tim has ordered two new paper towel dispensers from Superior. Motion

carried approving \$2,500.00 to replace the east door to the SDMG Museum.

Donations: David Lipson donated \$1,000.00 to the Lapidary School. Also received were two boxes of books and an investment vibrator.

Historian: Shirley Leeson wrote up a one-page history of the Society, to be placed on the website.

City Liaison: Jim Parrish to begin work on acquiring electric meter for SDMG after Tucson Show is over.

Christmas Potluck: Attendance was 107. After expenses, the net profit was \$494.68. Permit obtained for next Christmas Potluck, date to be Dec. 18, 2017.

Museum Curator: Jim Parrish to order new UV lights after Tucson Show is over.

Banquet: Donna Beers to purchase amethyst cathedral, NTE \$200.00, for special drawing, as well as 18 to 20 door prizes for free drawing, NTE \$200.00. Jim Parrish to discuss A/V requirements with speaker. There will be no selling of merchandise at this event. Motion carried, 12 to 3, for the Society to award two \$750.00 scholarships at the Banquet.

BBQ: Doug Peeler discussed menu with caterer, may do Mexican food. Portapotties have been rented. Quote received from table rental firm.

New Business: Motion carried unanimously approving Bonnie Zeranski's request to add two new members to Village Silversmiths, Irene Wetsman and Sheryl Haupt.

Motion carried authorizing the Society to give out two \$50.00 awards at the 2017 San Diego County Fair: Best Cabochon Worldwide and Best Mineral Collected by an Amateur.

Motion carried to continue holding the General Meeting on the fourth Monday of the month, through June 2017.

Motion carried unanimously to approve the Southern California Paleontological Society's comment letter on the Proposed Rule under the Paleontological Resources Preservation Act of 2009, and to add the Society as a signatory to that letter.

(Any member may attend Board meetings. The next one is Feb. 20, 2017, at 7 pm in the SDMG Building.)



San Diego Mineral & Gem Society, Inc.

A Non-Profit Educational and Scientific Organization

Membership Information:

Interested in minerals, fossils, lapidary, gems,
or handcrafted jewelry? We are, too!

Adults (18 and older): \$30.00

Second adult, same address: \$10.00

Junior (under 18): \$10.00

Membership application forms
are available on-line at www.sdmg.org,

and at the Village Silversmiths Shop
in the SDMG Building,

or by contacting the SDMG Membership Secretary
membership@sdmg.org

or by writing to her at:

San Diego Mineral & Gem Society
attn: Angela Cannon

P.O. Box 710783
Santee, CA 92072

Please allow up to 3 weeks for processing your application

MAKE CHECKS PAYABLE TO:

San Diego Mineral and Gem

SDMG BADGES:

Order for just \$7,
payable in advance
from Simon King or Gladys Walker

(619) 444-3731



SAN DIEGO MINERAL
& GEM SOCIETY

YOUR NAME

Magnetic back comes standard. If you have a pacemaker, please
request the pin back. You may pick up your completed badge at a
Friday night meeting.

CLASSIFIED ADS

OCEANVIEW MINE TOUR & SCREENING TRIPS:

Sundays, 11:00am to 3:00pm

For more information
please visit www.digforgems.com

or call Jeff Swanger at 760-415-9143

Reservations required.

\$75. Adults \$60. Children (ages 5 to 11)

Family rates available.

HIMALAYA MINE TAILINGS:

Thursday-Monday, 10:00 am to 3:00 pm.

At the Lake Henshaw Resort on Highway 76.

Adults, \$75 per day. Kids 12-15, half price.
Screening tables, buckets, and shovels provided.

Call (775) 830-5797

or (775) 772-7724 for more info

Website:

www.highdesertgemsandminerals.com/

WEBSITES

SDMG:

www.sdmg.org

CFMS:

www.cfmsinc.org

AFMS:

www.amfed.org

PUBLIC LANDS:

www.amlands.org

BLM:

www.ca.blm.gov

BOB'S ROCK SHOP:

www.rockhounds.com

MUSEUMS:

www.sdnhm.org

www.nhm.org

www.amnh.org

www.mnh.si.edu

www.gia.edu



CLASS SCHEDULE – 2017

REGISTRATION IS REQUIRED BEFORE ALL CLASSES.

Email school@sdmg.org for class availability before attending any class to find out when the class starts and ends, if special materials are required and whether you qualify to attend. Fee is \$5.00 per class; it is usually easier for instructors if payment is made for a full month; cash or checks only, please. **Classes are open to members only** and students must read and follow the **School Rules** available in the classroom and at:

<http://www.sdmg.org/class-schedule/school-rules.pdf>

CABOCHONS	Tue	6 – 9pm	Tim Bickford
	Wed	9 – 11:30am	Jim Claypool
	Wed	12:30 – 3:00pm	Jim Claypool
	Wed	7 – 9pm	Andy Anderson
	Thu	7 – 9pm	Jon Evans
FACETING	Tue	noon – 3pm	Elbert McCune
	Tue	7 – 9pm	Jerod Schneider
	Wed	9am – noon	Bob Hancock
	Wed	noon – 3pm	Donna Beers
	Wed	7 – 9pm	Elbert McCune
	Thu	7 – 9pm	Bill Brisebois
BEG. SILVER FAB.	Tue	6 – 9pm	Stephanie Griffin
	Thu	9am – noon	Denny Turner
	Thu	1 – 4pm	Denny Turner
BEG. METALS FAB.	Sat	4 – 7pm	Andy Anderson
SILVER FABRICATION	Tue	9 – 11am	Lois Lukasky
	Tue	noon – 3pm	Lois Lukasky
	Wed	7 – 9pm	Al Fuente
	Thu	7 – 9pm	Ellen Riceman
	Fri	9:30am – noon	Dee Smith
	Fri	12:30 – 3:00pm	Dee Smith
ADV. SILVER FAB.	Wed	9am – 3pm	Denny Turner
ADVANCED METALS	Wed	9am – 3pm	Jackie Leverone
CASTING	Mon	1:30 – 7:00pm	Rocio Bergum
	Tue	9am – 2pm	Dave Smith
	Fri	5 – 7pm	Rich Yarbrough
STONE SETTING	Mon	by appointment	Miguel Asmar
ROCK CARVING	Mon	9am – 1pm	Jan Kunsu
SPHERE MAKING	Sat	1 – 3:30pm	Paul Williams
JUNIORS	Sat	10am – 1pm	Lois Lukasky
DESCRIPTIVE MINERALOGY	Wed	6:30 – 9pm	Doug Peeler

WEST COAST – SPRING GEM & MINERAL SHOW



*Grape Agate
Sulawesi, Indonesia
Photo by Jeff Scovil©*

May 19 - 20 -21, 2017
Santa Ana, CA

Holiday Inn - Orange County Airport
2726 S. Grand Avenue

(take 55 Fwy Exit 8 for Dyer Rd to S. Grand Ave)

Shop with 78 Great Dealers!

Minerals ♦ Fossils ♦ Gems ♦ Jewelry ♦ Beads ♦ Meteorites
Decorator Pieces ♦ Lapidary ♦ Metaphysical & More!

FREE ADMISSION ♦ FREE PARKING ♦ WHOLESALE ♦ RETAIL

LLD Productions, Inc., P.O. Box 665, Bernalillo, NM 87004 ♦ 505-867-0425 ♦ mzexpos@gmail.com
www.mzexpos.com

[Facebook.com/mzexpos](https://www.facebook.com/mzexpos)

Thomas M. Schneider Quality Gemstones



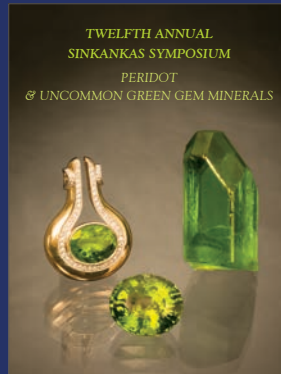
861 6th Avenue, Suite 517

San Diego, CA 92101

www.tmsgems.com

Ph: 619-232-2624

Fax: 619-232-2213



THE ANNUAL SINKANKAS SYMPOSIUM – SAPPHIRE Saturday April 8, 2017, Carlsbad, CA

Look for event details in mid-January at:
www.sinkankassymposium.net

"The best gem mineral symposium
in North America."

– John Koivula

AL'S OPAL IMPORTS & LAPIDARY

3684 Fairmount Avenue
San Diego, CA 92105
619 282-1700

Al Ramirez, proprietor
U.S. Navy WWII South Pacific veteran

Unmounted Australian and African Opals

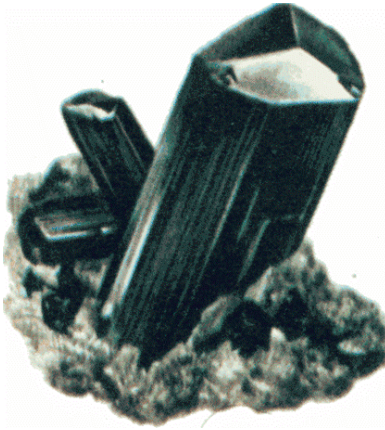
- Lapidary equipment new or used
- Tumblers, diamond blades, belts and grits
- Rough rock for faceting, slabbing or tumbling
 - Recycle your gold or silver jewelry into new designs or repair
- A variety of finished jewelry in silver or gold
 - Faceting gemstones

All work done on premises

Layaway Available



HOURS:
Monday thru Friday
8:30am to 3:30pm
Saturday
9:00am to 1:00pm



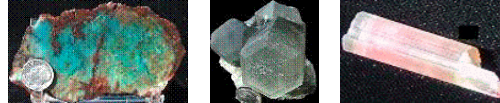
MinersGallery.com

Rock Slabs, Bulk rock, Crystals, Jewelry,
Fossils, Gems and Petrified Wood.

Phone: (619) 445-0800

richard@minersgallery.com

www.minersgallery.com



Minerals and crystals from around the world

*** ROCKS * MINERALS * GEMS * JEWELRY MAKINGS ***

*** LARGEST INVENTORY ***

*** * BEST QUALITY * ***

*** LOWEST PRICES ***

*** NEW ARRIVALS DAILY ***

SOUTH AMERICAN IMPORTS

Direct Importers

2461 San Diego Ave. #104

San Diego, CA 92110

In Old Town, in Coyote Café Shopping Center

Tel: (619) 299-3877

OPEN EVERY DAY!

Village Silversmiths

**Bead Work
Jewelry
Slabs**

**1770 Village Place
Balboa Park
San Diego, CA 92010
619 239-8812**

**Carvings
Rocks
Cabs**



Our business is putting fun and pride
into your lapidary hobby or profession
by making the right tools for your needs

Astounding Selection of Minerals
& Fossils from Around the Globe
MINERS GEMS



Experts in Geology, Gemology & Paleontology

World Famous Gold Rush
Rock Shop & Mining Museum

Daily Mineral Panning and Geode Cutting

Educational Programs Available

In Old Town San Diego State Historic Park
2616 San Diego Avenue, San Diego CA 92110
619-688-1178

minersgemsandminerals@cox.net
www.minersgemsandminerals.com



San Diego Mineral & Gem Society, Inc.

A Non-Profit Educational and Scientific Organization

1770 Village Place, Balboa Park

San Diego, CA 92101-1651

www.sdmg.org

WELCOME!

The SDMG Building
is located
at the north end of
Spanish Village
in Balboa Park

SDMG Museum hours:
11:00am to 4:00pm

Get information
on classes, events,
field trips, reports,
reviews, slideshows
and more at:
www.sdmg.org

ADDRESS SERVICE REQUESTED



THE PEGMATITE – FEBRUARY 2017

Sun	Mon	Tue	Wed	Thu	Fri	Sat
29	30	31	1	2	3	4
5	6	7	8	9 TGMS - main Show Tucson - begin	10	11
12 TGMS - main Show Tucson - end	13	14	15	16	17	18
19	20 SDMG Board Mtg 7pm, SDMG bldg	21	22	23	24	25
26	27 SDMG General Mtg 7pm, SDMG bldg	28	1	2	3	4