



San Diego Mineral & Gem Society, Inc.
A Non-Profit Educational and Scientific Organization

THE PEGMATITE

MAY 2017



MINERAL DIVISION

Garry Cannon, Chairperson
Jim Parrish, Treasurer and Door Prizes

Friday, May 12, 2017
7:00pm, SDMG Bldg.

WE WILL BE HOSTING the Junior Division Annual Fund Raiser. Lois Lukasky has tons of door prizes ready for you to win! Come show your support of the Juniors, and see what they have been working on in class.

Prior to the raffle, I will give a short talk on "Something to do in Tucson When You're Tired of Shopping For Rocks."

After the meeting we'll have some snacks. Please bring a treat to share. The Club will provide punch, coffee, and tea.



Official bulletin of the San Diego Mineral and Gem Society, Inc.

Affiliations: California Federation of Mineralogical Societies
American Federation of Mineralogical Societies
American Lands Access Association

Sister Club: Kingston Lapidary, Hull, England

Publication: *The Pegmatite* is published monthly (except July and August).

Submission

Deadline: 20th of the month prior to the publication issue.

Membership: Anyone with an interest in minerals, fossils, lapidary, gems, or hand-crafted jewelry may join the Society. Contact: membership@sdmg.org

Liability: The San Diego Mineral & Gem Society, Inc., is not and cannot be held responsible and liable for personal injuries, for damage or loss of property at any meetings, field trips, classes, shows, or any event sponsored or recommended herein.

Copyright: © 2017 San Diego Mineral and Gem Society, Inc. Non-commercial reprint permission given, unless otherwise noted, provided proper credit is given.

Street Address: 1770 Village Place
San Diego, CA 92101-1651

Mailing Address: P.O. Box 710783
(membership apps) Santee, CA 92072
attn: Angela Cannon

Phone: 619-239-8812

Website: www.sdmg.org

Editor: Lisbet Thoresen, editor@sdmg.org

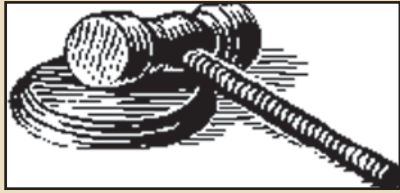
Layout, Advertising: info@sdmg.org

General Information: admin@sdmg.org

Change of Address: membership@sdmg.org

Exchange bulletins: Send to the Society mailing address

The mission of the San Diego Mineral and Gem Society, Inc., is to disseminate knowledge of mineralogy and earth sciences; to encourage the study of these subjects; to conduct classes in mineralogy and lapidary arts; to conduct field trips for the collection and study of specimens; to encourage interest in mineralogy and lapidary arts among young people; and to procure and maintain a collection related to the earth sciences and lapidary arts.



PRESIDENT'S MESSAGE

May 2017

by Shirley Leeson

sdmgpresident@sdmg.org

We only have this month and next before our society officially shuts down for summer. I hope many of you have the **AFMS/CFMS National Show and Convention** on your list of things to do this summer. The show will be held June 9th to 11th at the Ventura Fairgrounds and can be reached by coastal train, bus, or by car. I hope you have already made arrangements for motel rooms, if you are planning on going for more than a day trip. Ventura is a summer destination, so rates are high and already booked in many instances.

Every year in May, the **Juniors** host the General Meeting, but this year they will preside over the **Mineral Division** Meeting. It will be held on Friday, May 12th at 7pm in the **SDMG** building adjacent to Spanish Village. Please plan on attending and show your support of the **Junior Division**.

The General Meeting planned for Monday, May 22nd at 7pm in the **SDMG** building will be a special presentation by **Anthony Ferrari**. I began reading his blog posts on Quartzsite early on, and enjoyed them so much I invited him to come speak to our Society. As it turned out, he is a member of the **Vista Gem & Mineral Society**. He will talk about collecting in the Black Rock Desert, in northern Nevada, and, of course, Quartzsite, Arizona. More details on page 3.

The final General Meeting of the year will be held on Monday, June 26th. We will begin with the business of **SDMG** for this year and end on a fun note. We will have rock bingo for you. This is something the society did many years ago. Please plan on attending. The usual door prizes will be specially selected for the evening and used as bingo prizes.



JUNIOR DIVISION NEWS

Sponsored by
Lois Lukasky
and Marvin Dillard

Hello from the Juniors!

THIS MONTH, on Friday, May 12th, the **Juniors** will host the **Mineral Division Meeting**. It is an annual tradition for them to host a May meeting. If that was not enough to keep them busy, the **Juniors** are hard at work on their display case for

the San **Diego County Fair**, which opens Friday, June 2nd. It will be here before you know it.

Paul Williams
Junior Div. Chair pro tem

SDMG
General Meeting
Monday, May 22, 2017

Shirley Leeson, Chair
 7pm SDMG bldg
 Public Welcome!

GREETINGS EVERYONE. I hope you are ready for a special program. Our friend, **Anthony Ferrari**, will take us on a whirlwind tour of several places and talk about several important things.

First, **Anthony** had a blog about **Quartzsite** last January that drew my attention. I contacted him, and to my delight I learned that **Anthony** is a member of the **Vista Gem & Mineral Society** – not that far away from San Diego. He consented to take us on a visual journey of his adventures at **Quartzsite**. But in addition, he mentioned he had gone on several field trips, and when he mentioned **Black Rock Desert** in northern Nevada, he had me hooked. It is a place I've heard so much about, and I have seen some of the material from that area, so **Black Rock Desert** is included in the program.

And finally, if all this isn't enough, **Anthony** wants to tell us about the program he presents to school children and scouts. Maybe he can sign one of you up to assist him.

Please bring something for the snack table, we will provide punch and coffee. And don't forget our wonderful door prizes – will they go home with you? Only if you plan to attend.



Anthony making a presentation to a scout troupe.

*Highlights from a
 Rockhounding adventure
 in northwestern Nevada
 2015*



Members of the San Francisco Mineral Club visited the Black Rock Desert, Mt. Airy (6,690 ft el.), and Tenopah.



by Anne Schafer, Coordinator

BY THE ENTRY DEADLINE on April 28th, 129 exhibitors had submitted 352 entries, including 35 combined from **SDMG** (as a club) and its individual members. Yippee-yah-yay-yo, that makes the third largest number of entries in Fair history. There will be lots of cases filled with spheres, petrified wood, large-scale repoussé, carvings and faceted gemstones, plus educational displays from the **Juniors**, the casting classes, the faceting students, **GIA**, and a few more surprise entries. Lead family minerals are the annual theme mineral for 2017. Trilobites and Marine Fossils are the Fossil theme. Steampunk jewelry is a carryover from last year, plus “**How the West was Fun**” and handmade bola ties are two additional jewelry themes this year.

Volunteer! Get a free ticket to the Fair!

Gem I.D. ~ If you are a current or past member of the Gemological Society, or have a degree in gemology, have we got a job for you! The refractometers and microscopes will be out each

weekend during the Fair, waiting for YOU! Please contact **Jim Porter** at JLPorter@att.net to sign up.

Faceting Demos ~ If you would like to show off your faceting skills to the public (and you know how to run an Ultra Tec...), please contact **Bob Hancock** to sign up:

rtourmaline2@aol.com

Other Demos ~ Chain making, Fossil prep, Wax carving, Wire wrap, Bead stringing, and the list goes on. If you have a rock or gem related activity that does not involve an open flame, please contact Asst. Coordinator **Rich Yarbrough** to schedule your time slot:

sdfair@sdmg.org

Info Booth ~ If you like interacting with kids of all ages, and would like to help them screen for a free rock in the sand pile, please sign up for a two-hour slot in the Info Booth. (You can bring a couple show'n'tell items, too, for fun.) Look for the signup sheets in the Casting Room, in the near future or contact Coordinator **Anne Schafer** to schedule your time slot:

sdfair@sdmg.org

THE SCHEDULE:

Entry brochures: [Download PDF](#) (sdfair.com)

Online entry: sdiego.fairmanager.com

Entry deadline: Fri, April 28, at 11:59 pm

Entry delivery: Sat & Sun, May 27-28,
9 am to 6 pm

First day of Fair: Fri, June 2, 4 to 11 pm

Exhibitor

Appreciation: Wed, June 7, 6 to 9 pm

Last day of Fair: Tue, July 4

Exhibit pickup: Thu, July 6, 9 am to 8 pm

Got questions? We have answers! Contact:
Anne Schafer, Gems & Mineral Coordinator
Rich Yarbrough, Assistant Coordinator
sdfair@sdmg.org

ON THE GO ... TO A SHOW



MAY

5-7 YUCAIPA, CA

Yucaipa Valley Gem & Mineral Society

Yucaipa Music & Arts Festival

Venue: Adams St. & Yucaipa Blvd.

Hours: Fri 6:00–9:00pm;

Sat 11:00am – 10:00pm; Sun noon – 6:00pm

Admission and Parking: Free. Public welcome.

Contact: Lee Peterson, 909-794-0731

or res09ayd@verizon.net

Web: www.yvgms.org

Top quality dealers offering awesome deals on unique and rare gems, minerals, fossils, jewelry, beads, and more. Raffle with wonderful Prizes from the society and its members, including \$1,000 First Prize! Silent Auction, educational, hands-on activities, and demonstrations.

6-7 ANAHEIM, CA – 56th Annual Gem, Mineral & Jewelry Show

Sponsor: Searchers Gem & Mineral Society

Venue: Brookhurst Community Center

2271 W. Crescent Ave., Anaheim, CA 92801

Hours: Sat 9:00am – 5:00pm;

Sun 10:00am – 4:30pm

Admission & Parking: Free. Public welcome.

Contact: Margaret Hogarth, 909-815-3045

or Hogarth.m@gmail.com

Website: www.searchersrocks.org

Rocks, gems, minerals, fossils, beads, rough, slabs, vendors, gold panning, silent auction, hobby supplies, vintage stones, door prizes, gemstones, grab bags, tools, equipment and exhibits. Lapidary supplies and demonstrations. Lunch, snacks and drinks are available.

6-7 JACKSON, CA

Amador County Gem & Mineral Society

Gem & Craft Fair at the Kennedy Mine

12594 Kennedy Mine Rd (off Hwys 49/88)

Hours: 10:00am – 4:00pm daily

Admission: Free.

Parking: \$2.00.

Contact: Gaylene Lichty, 209-245-5388

or mountaingirl@volcano.net

Website: www.amadorgemandmineral.org

(website info may not be current)

see: www.visitjacksonca.com

Rocks, Slabs, Hand Crafted jewelry, Beads, Gemstones and other hand crafted items.

6-7 RENO, NV

Reno Gem & Mineral Society

52nd Annual Jackpot of Gems Show

Reno-Sparks Livestock Event Center;

1350 N. Wells Ave., Reno, NV 89512

Hours: Sat 10:00am – 5:00pm;

Sun 10:00am – 4:00pm

Admission: Adults \$6.00; Seniors/Students \$4, Kids Free.

Parking: Free.

Contact: Daniel Ellis, 775-229-4420

or sailondan55@aol.com

Web: www.renorockhounds.com

Fifty club member displays; hourly door prizes, and over 25 dealers bringing beautiful gems from all over the world. More than a dozen demonstrations on jewelry making.

19-21 SANTA ANA, CA

West Coast Gem & Mineral Show (Spring)

Venue: Holiday Inn, Orange County Airport

2726 S. Grand Ave., Santa Ana, CA 92705

Hours: Fri and Sat 10:00am – 6:00pm;

Sun 10:00am – 5:00pm

Admission & Parking: Free. Public welcome.

Dealer List: www.mzexpos.com/dealer-list

Web: www.mzexpos.com/west-coast-spring

80 dealers, wholesale and retail.

WEST COAST – SPRING GEM & MINERAL SHOW



*Grape Agate
Sulawesi, Indonesia
Photo by Jeff Scovil©*

May 19 - 20 -21, 2017
Santa Ana, CA

Holiday Inn - Orange County Airport
2726 S. Grand Avenue

(take 55 Fwy Exit 8 for Dyer Rd to S. Grand Ave)

Shop with 78 Great Dealers!

Minerals ♦ Fossils ♦ Gems ♦ Jewelry ♦ Beads ♦ Meteorites
Decorator Pieces ♦ Lapidary ♦ Metaphysical & More!

FREE ADMISSION ♦ FREE PARKING ♦ WHOLESALE ♦ RETAIL

LLD Productions, Inc., P.O. Box 665, Bernalillo, NM 87004 ♦ 505-867-0425 ♦ mzexpos@gmail.com
www.mzexpos.com

[Facebook.com/mzexpos](https://www.facebook.com/mzexpos)

KRISTALLE

Est. 1971

Wayne and Dona Leicht

WE ARE CASH BUYERS FOR SINGLE SPECIMENS AND ENTIRE COLLECTIONS!

875 North Pacific Coast Highway - Laguna Beach, CA 92651

949.494.5155 - fax: 949.494.0402

e-mail: info@kristalle.com

JOHN E. GARSOW

gems & minerals

May 6–7

**Searchers Gem & Mineral Society
Gem Show**

Anaheim, CA
Brookhurst Community Center

May 19–21

West Coast Gem & Mineral Show

Santa Ana, CA
Holiday Inn, Rm 148

June 3–4

**Glendora Invitational
Gem & Mineral Show**

Glendora, CA
Goddard Middle School Gym

June 9–11

CFMS-AFMS Convention & Show

Ventura, CA
Ventura Fairgrounds

Facet Rough • Cabbing Rough
Jewelry • Mineral Specimens

www.johngarsow.com



77th Annual CFMS-AFMS Convention & Show

hosted by

Ventura Gem & Mineral Society

June 9 – 11, 2017

Ventura County Fairgrounds

10 Harbor Blvd., Ventura, CA 93001

Fri & Sat 10am – 5pm, Sun 10am – 4pm

Contact: 805-312-VGMS or info@vgms.org

Web site: 2017CFMS-AFMSShow.com



JUNE

2–4 LA HABRA, CA

NOC 2017 Show: Game of Stones

Venue: La Habra Community Center
101 W. La Habra Blvd., La Habra, CA 90631

Hours: Fri 5:00– 8:00pm;
Sat and Sun 10:00am – 5:00pm

Admission: Free.

Contact: Armando Perdoza, 909-455-6800
or forestandson@yahoo.com

Web: www.nocgms.com/show/show.html

Exhibits, prizes, unique rocks, gems, jewelry.
Tools, geode cutting, Kids' grab bags.

3–4 ESCONDIDO, CA

Palomar Gem & Mineral Club

63rd Annual Gem, Jewelry & Mineral Show

Venue: California Center for the Arts
340 N. Escondido Blvd., Escondido, CA 92025

Hours: Sat 10:00am – 5:00pm;
Sun 10:00am – 4:00pm

Admission: Adults \$5.00; Kids 12 and under Free with
paid Adult admission.

Parking: Free.

Contact: Dawn Vickers, dawnjvickers@gmail.com
or 2017pgmcshow@palomargem.org

Web: www.palomargem.org

Dealers selling gems, rock rough, finished stones,
jewelry, findings and supplies, beads, other rock related
products. Free gem identification, lapidary and jewelry
demonstrations, educational displays.

3–4 GLENDORA, CA**Glendora Invitational Gem & Mineral Show****Sponsor:** Glendora Gems & Mineral Society**Where:** Goddard Middle School Gymnasium
859 E. Sierra Madre, Glendora, CA 91741**Hours:** Sat, 10:00am–5:00pm

Sun, 10:00am–4:00pm

Admission: Free.**Contact:** Bonnie Bidwell, 626-963-4638or Ybidwell@aol.com**17–18 CAMBRIA, CA****Annual Summer Gem & Mineral Show****Sponsor:** San Luis Obispo Gem & Mineral Club**Where:** Cambria Vets Hall

1000 Main Street, Cambria, CA 91741

Hours: 10:00am–5:00pm daily**Admission and Parking:** Free.**Contact:** Kim Noyes, 805-610-0603**Website:** www.slogem.org

Dealers selling gems, minerals, fossils, carvings, jewelry, beads, jade, crystals, meteorites, lapidary and metaphysical items. Jewelry-making demonstration. Free door prizes and free drawing at the end of the show on Sunday. Reasonably-priced, incredibly-tasty Santa Maria-style barbecue outside on the patio in back.

JULY**8–9 CULVER CITY, CA****54th Fiesta of Gems****Sponsor:** Culver City Rock & Mineral Club**Where:** Culver City Veterans Memorial Aud.
4117 Overland Ave., Culver City, CA 90230**Hours:** Sat 10:00am–6:00pm;

Sun 10:00am–5:00pm

Admission: \$7.00 (weekend pass);
children under 12 free.**Parking:** Free.**Contact:** Janice Metz, janicemtz@yahoo.com**Website:** www.culvercityrocks.org/fiesta.htm

Club displays and exhibits, Kid Zone, craft demonstrations, book sales, tool dealers, 30+ gem and jewelry dealers, free hourly door prizes, grand prize raffle.

School Closure Schedule 2017

Closure date	Description
Sat, July 1 – Sun, July 9	Fourth of July shutdown, one week.
Mon, July 10 – Fri, Sept. 1	Optional Summer Class Period, two months. (Instructors must notify School Director if you plan to hold summer classes.)
Sat, Sept. 2 – Sun, Sept. 10	Labor Day shutdown, one week.
Mon, Sept. 11	Fall classes begin.
Fri, Sat & Sun, Nov. 3, 4, 5	Gem Diego Show shutdown, three days. (Everyone's help is needed with your club's show.)
Thu, Nov. 23 – Sun, Nov. 26	Thanksgiving shutdown, four days. Reopens Mon, Nov. 27.
Mon, Dec. 18, 2017 – Mon, Jan. 1, 2018	Christmas and New Year's shutdown, two weeks.
Tue, Jan. 2, 2018	Classes begin.

**BLM Field Tour &
Desert District Advisory Council
Business meeting**

June 2017

CANCELLED

DOI is reviewing department
function and process.

All meetings of
advisory boards and councils,
including DAC and all other BLM RAC's,
subcommittees, and subgroups
are suspended during this review.

Multi-Club Field Trip Kramer Junction and Beyond

May 27–29, 2017

Contact: Joe Goetz
(626) 260-7239
or Jay
(626) 602-5849

KRAMER JUNCTION is always a great field trip and a great camping spot to explore nearby areas such as the Princess Pat Mine and other area Tungsten mines, Opal Mountain, North Edwards or Castle Butte. So, you know it's not going to be boring. There is great collecting right there at the junction as well. There is moss and flower agates as well as jasper some petrified palm and opalite. There is a large area to explore and who knows what we'll find (the best stuff has been found when we were "lost"). Typically, where we camp not 30 feet away are some of the widest seams of agate I have ever seen.

This can be done in a single day, but it is much more enjoyable to be there each day of the trip. It is really nice to be camping there, because when you wake up, you are there. It is really neat to walk around with a cup of coffee and find rock. You can relax and not worry about making it to camp before the group leaves to head out to explore and collect choice material.

The time to be in camp is before 8:30 am, because that's when you'll find out where we are going and what will be collected. If by chance you are a little late call on the cell and let us know. This way then we could wait by the road for you to show up. Should you miss us, we'll probably have left a map and directions on how to get to the area we have headed to. Bring a lunch, lots to drink, sunscreen, a hat, sunglasses, a rock hammer and something to put you collected material into.

It could just happen that we all might be popping wheelies on the way home.

Somewhere in Calif driving in circles.

Be prepared to sign a liability waiver and agree to abide by AFMS Code of Ethics.. **SDMG is not a sponsor of this field trip and accepts no liability.**

Public Lands Update

IT'S OFFICIAL, California has a state dinosaur. The bill to designate *Augustynolophus morrissi* as an official symbol of the state passed on April 6th. AB 1540 was authored by Assemblymember **Richard Bloom** of the 50th Assembly District. **San Diego Gem & Mineral Society** joined the **Southern California Paleontological Society** in supporting passage of the bill. The primary objective of the bill is to increase children's interest in science.

If you missed the back story about the bill and how **Augustynolophus** came to the fore among dinosaur candidates, see the articles by **Karol McQueary** and **Andrew Hoekstra** in *The Pegmatite* April 2017 at: www.sdmg.org/peg-online/sdmg-pegmatite-2017-apr.pdf#page=15 (or short url: <https://goo.gl/hqiqz2>).

Stay abreast of what California's new ambassador for science and education is up to and [follow @augustynolophus](#) on Twitter.



Augustynolophus, reproduced courtesy of @augustynolophus.

Stay current
with **[News.bytes](#)**

The BLM California newsletter

***An overview of BLM's public meetings
on route designations
in San Bernardino County***

*by Randy Banis
Chairman, Desert District Advisory Council*

THIS MAY 3, 2017 PUBLIC MEETING is related to the ongoing WEMO routes lawsuit. Usually, each time the BLM asks for an extension of time from the courts to finalize the new WEMO route plan, the plaintiffs request temporary relief. At one point, the plaintiffs asked to limit green stickers to OHV open areas, but the judge rejected that as draconian.

In this case, the plaintiffs are reaching for low hanging fruit — something easier to get. The plaintiffs have identified ~140 miles of BLM Barstow-area dirt roads that are periodically maintained by San Bernardino County road crews. The county does this to serve its residents and private property owners in the check-board ownership areas generally adjacent to the desert towns and cities.

Apparently, according to state law, such maintained roads cannot be used by OHV and CHP has the authority to cite. So, the plaintiffs and BLM have agreed that BLM will propose a temporary street-legal only designation for these ~140 miles of county maintained roads. This meeting is the third and last of three public meetings BLM is holding, and comments are due by May 12, 2017. This is a proposed action under NEPA, so there is no guarantee that BLM will decide in favor of the agreement, but it is up to us to give the BLM a reason to do otherwise.

Most of these miles are actually 3 or 4 long roads, such as Camp Rock Road in Johnson Valley. BLM asserts that there are green sticker alternatives for each of the closed roads, but I'm not able to verify that. Although these closures would be temporary, I would expect that if adopted temporarily now, they will likely become part of the eventual final WEMO decision, now due in 2020.

CORVA experts alerted us to a provision in state law that allows the designation of "combined used" roads, which I've supplied to county representatives and Rep. Cook's office. Other than something like that, I see little wiggle room here until I hear from those who are affected.

In my opinion, the burden here falls on green sticker users to help identify where these proposed closures interfere with their access to recreation. Rockhounds that use these roads driving ATV's, UTV's or non-street legal buggies to access collecting areas would be directly affected.

**BLM seeks public input on
proposed route designations
in San Bernardino County**

***Open House
Wednesday, May 3, 2017
5:30 – 6:30 pm***

Barstow Field Office
(Main Conference Room)
2601 Barstow Rd, Barstow, CA 92311

Representatives from the BLM will be available to answer questions regarding location of routes, and maps will be available for viewing. Representatives will also explain the process involved in proposing the route designations and how the public can formally participate.

***Initial public review
and comment period
closes May 12, 2017***

*Submit written comments
at the meeting
or email Matt Toedtli at:
mtoedtli@blm.gov*

For information contact:

Stephen Razo
BLM California Desert District
External Affairs
951-697-5217 or srazo@blm.gov

or visit the BLM Web site at:
<https://www.blm.gov/node/11505>

Lastly, another hit from the White House last week — all DOI advisory boards and councils, including the DAC and all other BLM RAC's, and their subgroups and subcommittees, were temporarily suspended from meeting while the department conducts an internal review process of their mission and function. That means that the DAC's June meeting has been canceled, but the BLM Desert Manager feels that our November meeting will occur.

The Rime of the Mojave Mariner

by Lisbet Thoresen

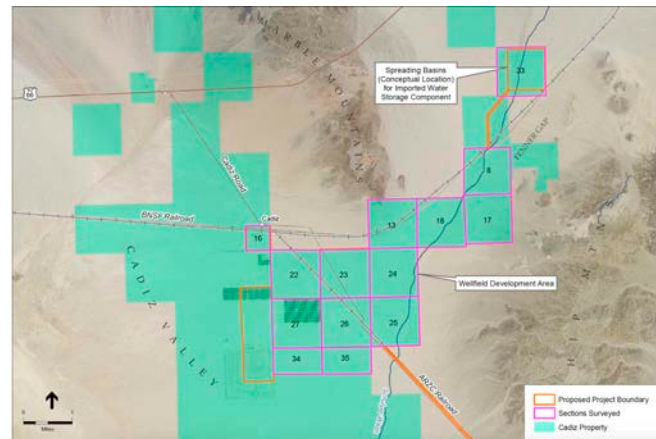
Public Lands Representative for SDMG
and PLAC–South Chair for CFMS

TWO PROJECTS TAPPING AQUIFERS in the Mojave Desert have been greenlighted to proceed. The **Cadiz Water Project** will export ground water to customers in Orange County, which will enable them to keep their lawns green. The **Eagle Mountain hydropower project** will provide a back-up source of power to desert-based renewable energy utilities when solar or wind energy generation is sub-optimal. Environmental impact studies were waived or deemed flawed for the projects, and they are going forward without opportunity for public comment.

The Cadiz project is on private land located adjacent to the Marble Mountains. It is surrounded by the newly created **Mojave Trails National Monument (MTNM)**. Cadiz Inc. proposes to export nearly 16.3 billion gallons a year for 50 years from the Mojave Desert aquifer to Orange County's Santa Margarita Water District (SMWD). This project is being spun as a conservation effort by the company, which claims that extracted ground water will be replenished by rainfall. **Shaun Gonzales** points out in his blog post on the [Cadiz water scheme](#) that privately contracted hydrology reports estimate 10.6 billion gallons of rainwater per year will recharge the aquifer, which is an outlandish calculation – even the ground water in Orange County, where the water table is higher, doesn't come close to the volume projected for the Mojave.[1]

The Cadiz company proposes drilling up to 34 wells in the middle of **MTNM**. The threats to fragile habitat and the prospect of groundwater collapse are dire, which **Gonzales** and other conservationists critical of the project have pointed out repeatedly for many years.

As recently as 2009, plans for commercial



The Cadiz water project is surrounded by the Mojave Trails National Monument.

exploitation of the area were derailed, precisely because of environmental concerns. **President Trump** rescinded the requirement for federal review, and he appears to be foregoing the requirement for public review and comment, as well. The Cadiz project will now go forward as part of the administration's objectives to promote infrastructure projects.

In an editorial for *The Desert Sun* (April 3, 2017), **Mariana Maguire**, Southern California associate director for conservation for the **Conservation Lands Foundation**, and **Frazier Haney**, conservation director at the **Mojave Desert Land Trust**, wrote:

"The depletion of the aquifer threatens both the fragile ecosystems across the East Mojave Desert and the protected landscapes that provide sustainable economic benefits to several gateway communities, including Barstow, Needles and Twentynine Palms."[2]

Quoting the [Pacific Institute](#), an independent group of water experts, **Shaun Gonzales** wrote:

"[...]over-pumping by Cadiz could lead to irreversible damage to the groundwater basin. If water is pumped much faster than nature can replace it, the ground settles and compacts, reducing its capacity to store water."[3]

1.) <http://www.mojavedesertblog.com/2017/04/the-absurdity-of-cadiz-water-export.html>
or short URL: <https://goo.gl/DLFTwy>

2.) <http://www.desertsun.com/story/opinion/contributors/valley-voice/2017/04/23/valley-voice-making-case-stringent-review-mojave-groundwater-harvesting-project/305798001/>
or short URL: <https://goo.gl/0dnW7f>

3.) See note 1; http://pacinst.org/app/uploads/2013/02/public_comments_0314123.pdf.

**“Water, water, everywhere,
And all the boards did shrink;
Water, water, everywhere,
Nor any drop to drink.”**

The **Eagle Mountain hydropower project** is a pumped storage facility that will extract an estimated 32.6 billion gallons of water over the next 50 years from the Chuckwalla aquifer. The water will fill a defunct mining pit as a contingency power supply for utility scale wind and solar farms in the desert when their output is off-peak/sub-optimal. The planned pump station will be located in a keyhole-shaped area surrounded on three sides by the **Joshua Tree National Park (JTNP)**.

The first protective designation applied to **Joshua Tree** was as a **National Monument** in 1936. The area currently under contention was taken out of the monument in a controversial land swap authorized by Congress in 1950. The deal made available thousands of acres to accommodate commercial mining, primarily for steel production, including the Kaiser Eagle Mountain Iron Mine. It went bankrupt in 1987, and in the decades since, the Eagle Mountain area has been the object of bitter battles over restoring its conservation status versus developing it for new and different economic opportunities. Part of the area, but not all of the land taken in 1950 was restored to the monument, and under the California Desert Protection Act of 1994 **Joshua Tree** was designated a **National Park**.

Rockhounds, be careful what you wish for

The latest campaign for economic exploitation at Eagle Mountain was defeated in 2009, but the land did not revert to the **JTNP**, as many conservation proponents would have liked. Instead, the area remained in private hands. Some Rockhounds thought that was a victory for them, or at least, it was preferable to a protective designation that permanently and forever debarred hobby collecting. Recent trends in land use policy are proving that recreational uses and conservation values have low priority, and lost rockhound habitat is not likely to be restored where it competes with economic opportunity.

And now it appears that Eagle Mountain not only will debar hobby collecting, but also may debar life itself in the desert. Cadiz and Eagle Mountain are not small sacrifices for a greater good. Cadiz has not had environmental review and previous federal review of



Joshua Tree National Park boundary, 1994 to present.
Map: National Park Service.

Eagle Mountain was found to be scientifically flawed and occurred without scientists being able to set foot on the property. Such laxity and disregard for environmental harms will pervade wide areas far beyond their above-ground footprints. Their contaminating effects will spread like a virulent, irreversible contagion.

Among all the ill-conceived plans to commoditize public lands for industrial scale energy projects and other uses, draining California's drought-savaged desert of its precious lifeblood, its ground water, is the most pernicious yet. The value proposition that presumes large-scale renewable energy utilities built anywhere are "green" and sustainable is oxymoronic. Many are demonstrably brown and unsustainable. The **Trump** administration, with support from California Governor **Jerry Brown**, late Riverside County Supervisor **John Benoit**, and others, have supported the hydropower project. As with Cadiz, the public has been deprived of the opportunity to review and comment on Eagle Mountain.

Surely, the poet Coleridge could not have envisioned a more peculiar irony when "water everywhere" might describe an aquifer, a freshwater underground ocean, and "nary a drop to drink" was not the plight of being adrift on the salty sea without a canteen, but the rapacious siphoning of a whole natural reservoir system beneath ones' feet.

We will be encouraging our gem-mineral society affiliates and regional federations across the United States to prepare letters opposing the Cadiz water project, Eagle Mountain, and others like them. In the meanwhile, do your part, and send a letter of your own. Download a sample letter at: www.sdmg.org/calnatmonuments/Zinke_letter_Oppose_Cadiz_Water_Project_individual.rtf



San Diego Mineral & Gem Society, Inc.

A Non-Profit Educational and Scientific Organization

Membership Information:

Interested in minerals, fossils, lapidary, gems,
or handcrafted jewelry? We are, too!

Adults (18 and older): \$30.00

Second adult, same address: \$10.00

Junior (under 18): \$10.00

Membership application forms
are available on-line at www.sdmg.org,

and at the Village Silversmiths Shop
in the SDMG Building,

or by contacting the SDMG Membership Secretary
membership@sdmg.org

or by writing to her at:

San Diego Mineral & Gem Society
attn: Angela Cannon

P.O. Box 710783, Santee, CA 92072

Please allow up to 3 weeks for processing your application

MAKE CHECKS PAYABLE TO:

San Diego Mineral and Gem

SDMG Library

SDMG Bldg.

Andy Anderson

Hours: 4 to 6 pm, Wednesdays

Reference use only, no lending.

Access the catalog online at:

<https://cloud.collectorz.com/sdmgmerklb/books>

Who may use the Library?

Membership is not required to view the catalog, but only

SDMG members may come use the reference library.

We Need Volunteer Assistant Librarians.

Members willing to volunteer in the Library
will enable us to extend the hours of access.

Contact Andy:

aanderson@sdmg.org

if you can help out.

CLASSIFIED ADS

OCEANVIEW MINE

TOUR & SCREENING TRIPS:

Sundays, 11:00am to 3:00pm

For more information
please visit www.digforgems.com

or call Jeff Swanger at 760-415-9143

Reservations required.

\$75. Adults \$60. Children (ages 5 to 11)

Family rates available.

HIMALAYA MINE TAILINGS:

Thursday-Monday, 10:00 am to 3:00 pm.

At the Lake Henshaw Resort on Highway 76.

Adults, \$75 per day. Kids 12-15, half price.

Screening tables, buckets, and shovels provided.

Call (775) 830-5797

or (775) 772-7724 for more info

Website:

www.highdesertgemsandminerals.com/

WEBSITES

SDMG:

www.sdmg.org

CFMS:

www.cfmsinc.org

AFMS:

www.amfed.org

PUBLIC LANDS:

www.amlands.org

BLM:

www.ca.blm.gov

BOB'S ROCK SHOP:

www.rockhounds.com

MUSEUMS:

www.sdnhm.org

www.nhm.org

www.amnh.org

www.mnh.si.edu

www.gia.edu



CLASS SCHEDULE – 2017

REGISTRATION IS REQUIRED BEFORE ALL CLASSES.

Email school@sdmg.org for class availability before attending any class to find out when the class starts and ends, if special materials are required and whether you qualify to attend. Fee is \$5.00 per class; it is usually easier for instructors if payment is made for a full month; cash or checks only, please. **Classes are open to members only** and students must read and follow the **School Rules** available in the classroom and at:

<http://www.sdmg.org/class-schedule/school-rules.pdf>

CABOCHONS	Tue	6 – 9pm	Tim Bickford
	Wed	9 – 11:30am	Jim Claypool
	Wed	12:30 – 3:00pm	Jim Claypool
	Wed	7 – 9pm	Andy Anderson
	Thu	7 – 9pm	Jon Evans
FACETING	Tue	noon – 3pm	Elbert McCune
	Tue	7 – 9pm	Jerod Schneider
	Wed	9am – noon	Bob Hancock
	Wed	noon – 3pm	Donna Beers
	Wed	7 – 9pm	Elbert McCune
	Thu	7 – 9pm	Bill Brisebois
BEG. SILVER FAB.	Tue	6 – 9pm	Stephanie Griffin
	Thu	9am – noon	Denny Turner
	Thu	1 – 4pm	Denny Turner
BEG. METALS FAB.	Sun	5 – 8pm	Andy Anderson
INT. METALS FAB.	Sat	4 – 7pm	Andy Anderson
SILVER FABRICATION	Tue	9 – 11am	Lois Lukasky
	Tue	noon – 3pm	Lois Lukasky
	Wed	7 – 9pm	Al Fuente
	Thu	7 – 9pm	Ellen Riceman
	Fri	9:30am – noon	Dee Smith
	Fri	12:30 – 3:00pm	Dee Smith
ADV. SILVER FAB.	Wed	9am – 3pm	Denny Turner
ADVANCED METALS	Wed	9am – 3pm	Jackie Leverone
CASTING	Mon	1:30 – 7:00pm	Rocio Bergum
	Tue	9am – 2pm	Dave Smith
	Fri	5 – 7pm	Rich Yarbrough
STONE SETTING	Mon	by appointment	Miguel Asmar
ROCK CARVING	Mon	9am – 1pm	Jan Kunsu
SPHERE MAKING	Sat	1 – 3:30pm	Paul Williams
JUNIORS	Sat	10am – 1pm	Lois Lukasky

Thomas M. Schneider Quality Gemstones



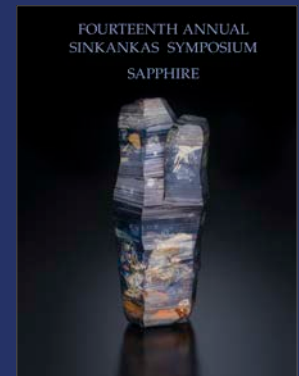
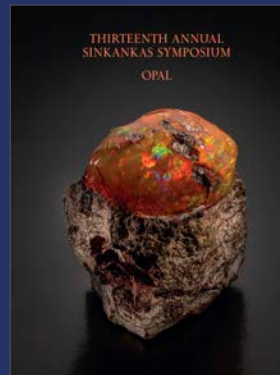
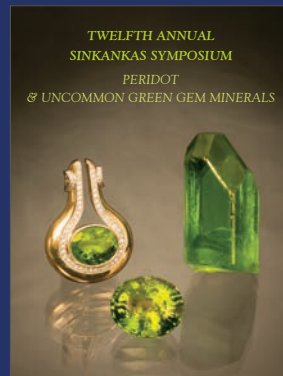
861 6th Avenue, Suite 517

San Diego, CA 92101

www.tmsgems.com

Ph: 619-232-2624

Fax: 619-232-2213



THE ANNUAL SINKANKAS SYMPOSIUM – SAPPHIRE Saturday April 8, 2017, Carlsbad, CA

www.sinkankassymposium.net

“The best gem mineral symposium
in North America.”

– John Koivula

AL'S OPAL IMPORTS & LAPIDARY

3684 Fairmount Avenue
San Diego, CA 92105

619 282-1700

Al Ramirez, proprietor
U.S. Navy WWII South Pacific veteran

Unmounted Australian and African Opals

- Lapidary equipment new or used
- Tumblers, diamond blades, belts and grits
- Rough rock for faceting, slabbing or tumbling
 - Recycle your gold or silver jewelry into new designs or repair
- A variety of finished jewelry in silver or gold
 - Faceting gemstones

All work done on premises

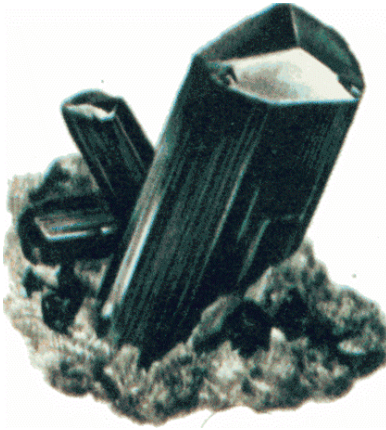
Layaway Available



HOURS:

Monday thru Friday
8:30am to 3:30pm

Saturday
9:00am to 1:00pm



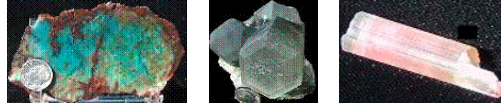
MinersGallery.com

Rock Slabs, Bulk rock, Crystals, Jewelry,
Fossils, Gems and Petrified Wood.

Phone: (619) 445-0800

richard@minersgallery.com

www.minersgallery.com



Minerals and crystals from around the world

*** ROCKS * MINERALS * GEMS * JEWELRY MAKINGS ***

*** LARGEST INVENTORY ***

*** * BEST QUALITY * ***

*** LOWEST PRICES ***

*** NEW ARRIVALS DAILY ***

SOUTH AMERICAN IMPORTS

Direct Importers

2461 San Diego Ave. #104

San Diego, CA 92110

In Old Town, in Coyote Café Shopping Center

Tel: (619) 299-3877

OPEN EVERY DAY!

Village Silversmiths

**Bead Work
Jewelry
Slabs**

**1770 Village Place
Balboa Park
San Diego, CA 92010
619 239-8812**

**Carvings
Rocks
Cabs**



Our business is putting fun and pride into your lapidary hobby or profession by making the right tools for your needs

Astounding Selection of Minerals
& Fossils from Around the Globe
MINERS GEMS



Experts in Geology, Gemology & Paleontology

World Famous Gold Rush
Rock Shop & Mining Museum

Daily Mineral Panning and Geode Cutting

Educational Programs Available

In Old Town San Diego State Historic Park
2616 San Diego Avenue, San Diego CA 92110
619-688-1178

minersgemsandminerals@cox.net
www.minersgemsandminerals.com



San Diego Mineral & Gem Society, Inc.

A Non-Profit Educational and Scientific Organization

1770 Village Place, Balboa Park

San Diego, CA 92101-1651

www.sdmg.org

WELCOME!

The SDMG Building
is located
at the north end of
Spanish Village
in Balboa Park

SDMG Museum hours:
11:00am to 4:00pm

Get information
on classes, events,
field trips, reports,
reviews, slideshows
and more at:

www.sdmg.org

ADDRESS SERVICE REQUESTED



THE PEGMATITE – MAY 2017

Sun	Mon	Tue	Wed	Thu	Fri	Sat
30	1	2	3	4	5	6
7	8	9	10	11	 12	13
14	 15	16	17	18	19	20
21	 22	23	24	25	26	27
 21						 SD Fair Deliver exhibits 9am-6pm
 28	29	30	31	1	2	3
					 First Day - SD Fair 4-11pm	