



San Diego Mineral & Gem Society, Inc.
A Non-Profit Educational and Scientific Organization

THE PEGMATITE

SEPTEMBER 2017



SDMG
General Meeting
Monday, September 25, 2017
Shirley Leeson, President
7pm SDMG bldg
Public Welcome!

Richard Cerutti **Master Flintknapper**

THIS EVENING RICHARD CERUTTI will demonstrate the art of flintknapping. By using the pressure flaking technique he will show us how arrow heads are created. Arrowheads, spear points, and knife points have been an important part of our history. **Richard** will tell us about flintknapping dating from the late 1800s and bring us up to date

on modern use. A hand-out of techniques will be available to all.

A BONUS FOR US – Richard will give us an insight in to the **Cerutti Mastodon** discovery right here in San Diego County. It's a fascinating find that is finally getting the international attention it deserves. Read the press release on pg. 3.

Please bring treats to share. The Club will supply coffee, tea, and punch.

Official bulletin of the San Diego Mineral and Gem Society, Inc.

Affiliations: California Federation of Mineralogical Societies
American Federation of Mineralogical Societies
American Lands Access Association

Sister Club: Kingston Lapidary, Hull, England

Publication: *The Pegmatite* is published monthly (except July and August).

Submission

Deadline: 20th of the month prior to the publication issue.

Membership: Anyone with an interest in minerals, fossils, lapidary, gems, or hand-crafted jewelry may join the Society. Contact: membership@sdmg.org

Liability: The San Diego Mineral & Gem Society, Inc., is not and cannot be held responsible and liable for personal injuries, for damage or loss of property at any meetings, field trips, classes, shows, or any event sponsored or recommended herein.

Copyright: © 2017 San Diego Mineral and Gem Society, Inc. Non-commercial reprint permission given, unless otherwise noted, provided proper credit is given.

Street Address: 1770 Village Place
San Diego, CA 92101-1651

Mailing Address: P.O. Box 710783
(membership apps) Santee, CA 92072
attn: Angela Cannon

Phone: 619-239-8812

Website: www.sdmg.org

Editor: Lisbet Thoresen, editor@sdmg.org

Layout, Advertising: info@sdmg.org

General Information: admin@sdmg.org

Change of Address: membership@sdmg.org

Exchange bulletins: Send to the Society mailing address

The mission of the San Diego Mineral and Gem Society, Inc., is to disseminate knowledge of mineralogy and earth sciences; to encourage the study of these subjects; to conduct classes in mineralogy and lapidary arts; to conduct field trips for the collection and study of specimens; to encourage interest in mineralogy and lapidary arts among young people; and to procure and maintain a collection related to the earth sciences and lapidary arts.



PRESIDENT'S MESSAGE

September 2017

by Shirley Leeson

sdmgpresident@sdmg.org

WELCOME BACK! Hope your vacations were spectacular and you have a potential program from your travels to share with us. Or maybe a technique you learned – we are all open to learning new things.

PLEASE MARK YOUR CALENDAR FOR THE FOLLOWING PROGRAMS & EVENTS:

- **First, our first General Meeting** of the year will be Monday, September 25th, 7pm, in our SDMG building in Spanish Village, Balboa Park. Our speaker will be **Richard Cerutti**, who will demonstrate the art of Flintknapping (see pg. 1).
- **Second, the Mineral Division Meeting** will be Friday, October 13th at 7pm in the SDMG building. **Jim Parrish** has taken over the chairmanship of the group and says he'll announce the program in the October **SDMG** bulletin and eNewsletter.
- **Third, the Gem Diego Show**, chaired by **Bob Hancock**, will be November 4 & 5 at Al Bahr Shrine Center, 5440 Kearny Mesa Road, San Diego (read more on pg. 7).
- **Fourth, our annual December Nights (Christmas on the Prado) Open House** will be Friday, December 1st and Saturday, December 2nd. **Jim Parrish**, coordinator, along with his merry band of elves (more on this as the date draws closer).
- **Fifth, our Annual Christmas Pot Luck**, Monday Dec 18th; **Rocio Bergum**, chair.

That finishes up 2017, but we have lots more to come. Our thanks to **Donna Beers** for procuring our new **Anniversary Banquet** venue: **Elijah's**, located at 7061 Clairemont Mesa Blvd., San Diego. Thanks also to **Jennifer Stapp**, who will be taking over as the 2018 Banquet chair. The event will be Saturday, March 24th, 2018. Look for more information in the October bulletin – you won't be disappointed.

Watch for information on all these events in the coming issues of *The Pegmatite* (on-line) and our **SDMG** web site, which is overseen by our editor, **Lisbet Thoresen**.

Two items of importance: **Lois Lukasky** has formally retired from her position as chair of the **Junior Division**. Lois was recognized at our **Anniversary Banquet** back in March, but we want to again thank her for her many years of dedication and service to our **Junior** members.

The second item is a sad note. **Thelma Lehmann**, **SDMG** President in 1986, passed away recently (June 26th) and we offer our sympathy to **Al** and the family. **Thelma** was a Board member for many years before she took on the office of President. We thank her for her time and service to **SDMG**. A sad loss.

Mastodon Discovery in San Diego Shakes Up Our Understanding of Early Humans in the New World

Broken bones and rocks yield evidence that pushes back the record of early humans in North America by more than 100,000 years

April 26, 2017

Press Release

by The San Diego Museum of Natural History*

AN ICE AGE paleontological-turned-archaeological site in San Diego, Calif., preserves 130,000-year-old bones and teeth of a mastodon that show evidence of modification by early humans. Analysis of these finds dramatically revises the timeline for when humans first reached North America, according to a paper to be published in the April 27 issue of the prestigious science journal *Nature*.

The fossil remains were discovered by Museum paleontologists during routine paleontological mitigation work at a freeway expansion project site managed by the California Department of Transportation (Caltrans). The bones, tusks, and molars, many of which are sharply broken, were found deeply buried alongside large stones that appeared to have been used as hammers and anvils, making this the oldest in situ, well-documented archaeological site in the Americas.

“This discovery is rewriting our understanding of when humans reached the New World. The evidence we found at this site indicates that some hominin species was living in North America 115,000 years earlier than previously thought,” said Judy Gradwohl, president and CEO of the San Diego Natural History Museum, whose paleontology team discovered the fossils, managed the excavation, and incorporated the specimens into the Museum’s research collection. “This raises intriguing questions about how these early humans arrived here and who they were.”

Until recently, the oldest records of human sites in North America generally accepted by archaeologists were about 14,000 years old. But the fossils from the Cerutti Mastodon site (as the site was named in recognition of field paleontologist Richard Cerutti who discovered the site and led the excavation), were found embedded in fine-grained sediments that had been deposited much earlier, during a period long



Above. A candid moment between Retired San Diego Natural History Museum Paleontologist Richard Cerutti (left) and Curator of Paleontology and Director of PaleoServices Dr. Tom Deméré (right)—congratulating each other while holding one of the mastodon fossil tusks. **Below.** A drawer full of Cerutti Mastodon site stone artifacts in the San Diego Natural History Museum's Paleontology Collection Room. Photos: Kate Johnson, San Diego Natural History Museum.

before humans were thought to have arrived on the continent.

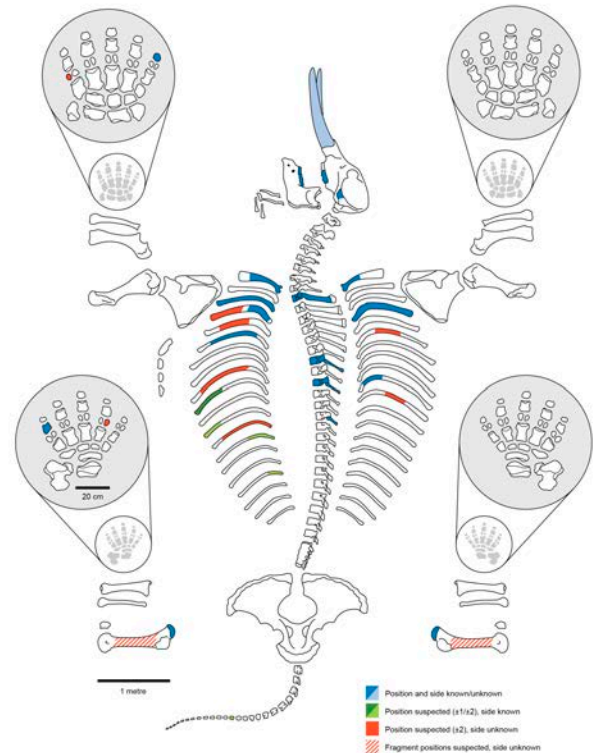
“When we first discovered the site, there was strong physical evidence that placed humans alongside extinct Ice Age megafauna. This was significant in and of itself and a ‘first’ in San Diego County,” said Dr. Tom Deméré, curator of paleontology and director of PaleoServices at the San Diego Natural History Museum and corresponding author on the paper. “Since the original discovery, dating technology has advanced to enable us to confirm with further certainty that early humans were here significantly earlier than commonly accepted.”

* reproduced by permission courtesy of SDMNM



Above. State Route 54 looking east. The sound berm comprised of the remaining Pleistocene deposits found at the Cerutti Mastodon site is located to the left. **Below.** San Diego Natural History Museum Paleontologists Don Swanson (left), Brad Riney (center), and Steve Walsh (right) with plaster jacket containing one of the tusks recovered from the Cerutti Mastodon site. Photos: San Diego Natural History Museum.

Since its initial discovery in late 1992, this site has been the subject of research by top scientists to date the fossils accurately and evaluate microscopic damage on bones and rocks that authors now consider indicative of human activity. In 2014, Dr. James Paces, a research geologist with the U.S. Geological Survey, used state-of-the-art radiometric dating methods to determine that the mastodon bones—which were still fresh when they were broken by strategically-placed blows



Mastodon skeleton schematic showing which bones and teeth of the animal were found at the site. Illustration: Dan Fisher and Adam Rountrey, University of Michigan.

from hammerstones—were 130,000 years old, with a conservative error of plus or minus 9,400 years. “The distributions of natural uranium and its decay products both within and among these bone specimens show remarkably reliable behavior, allowing us to derive an age that is well within the wheelhouse of the dating system,” explained Paces, a co-author of the paper.

The finding poses a lot more questions than answers: Who were these people? Are they part of an early—but failed—colonization attempt? Or is there a long, but as of yet, scarcely recognized presence of humans in this hemisphere?

“There’s no doubt in my mind this is an archaeological site,” said Dr. Steve Holen, director of research at the Center for American Paleolithic Research, former curator of archaeology at the Denver Museum of Nature & Science, and the lead author of the paper. “The bones and several teeth show clear signs of having been deliberately broken by humans with manual dexterity and experiential knowledge. This breakage pattern has also been observed at mammoth fossil sites in Kansas and Nebraska, where alternative explanations such as geological forces or gnawing by carnivores have been ruled out.”



JUNIOR DIVISION NEWS

Hello from the Juniors!

We bid a fond farewell to **Lois Lukasky** as sponsor of the **Junior Division** after many years of dedicated service. She has been active in myriad capacities for the benefit of the Society over many decades, but nurturing our youngest members' interests in gem minerals will have been one of her most important contributions. She may be diminutive in stature, but she has been a towering figure who has dedicated countless hours and boundless energy to teaching the **Juniors** craft skills for making their own lapidary art and jewelry techniques such as wire-wrapping and metal work.

Lois organized and orchestrated the participation of the **Juniors** for all of **SDMG's** activities and events – in the workshop, on a field trip, exhibiting alongside the adults at our annual **Gem Diego Show** and the **San Diego County Fair**, and staffing the selling booths at our **December Nights Open House** and **Annual Barbeque** – and more!

Lois leaves big shoes to fill. Other instructors are covering the Saturday classes in September, but a permanent sponsor of the **Junior Division** is needed. Fall classes for the **Juniors** will start Saturday, September 16th.

Parents who would like to enroll their child in the **Junior Division**, please accompany your student



At SDMG's Annual Banquet held in March, President Shirley Leeson presents Lois Lukasky a plaque acknowledging her decades of service to SDMG. Photo: Jim Parrish.

to a Saturday class to sign them up. We'll give you a tour of the **Juniors** at work and the equipment they are using.

If you have any questions about enrollment or about the position of **Junior Division Sponsor**, please contact **School Director Wayne Moorhead**:

school@sdmg.org



MINERAL DIVISION

*Jim Parrish, Chairman,
Treasurer and Door Prizes*

Friday, October 13, 2017
7:00pm, SDMG Bldg.

Welcome back to a new year of Mineral Meetings. First, I want to thank **Garry Cannon** for chairing the **Mineral Division** last year. Our first meeting will be held on October 13th. Plan on attending meetings on the second Friday of even-numbered months (no meeting in January, and February will be held on a

different day to avoid overlapping the Tucson Show). Program details for October will be announced in next month's *Pegmatite*. If you have suggestions for topics or speakers, please contact me.

Jim Parrish

Mineral Division Chairman mindiv@sdmg.org

GEMOLOGICAL SOCIETY of SAN DIEGO



Monday, October 2, 2017
7:00pm SDMG Building

THE SPEAKER FOR THE FIRST FALL meeting will be **Nathan Renfro**, who is analytical manager of gem identification and an analytical microscopist in the inclusion research department at **GIA's** world headquarters in Carlsbad. He will be speaking on microscopy for evidence of origin and treatments in **Ruby and Sapphire**. Anyone who has heard **Nathan** speak previously can look forward to an entertaining presentation – he is knowledgeable, and his photomicrographs are stunning. Expect to learn a lot at what promises to be a fun evening.

You can join the **GSSD** mailing list at **SDMG's** sign-up page at: <http://www.gssd.rocks>.

New Winter class: Rock Petrology

Doug Peeler, instructor

Students will learn how to identify rock types and the environments in which they formed using mineral associations, the rock's texture or mineral "fabric," and association with other rocks, ore deposits, and formations. Instruction includes review and additional training on observing physical and optical characteristics, physical property testing techniques, crystal forms and occurrence of mineral species, as well as rock characteristics, description methods, and key mineral associations, and the interpretation and use of geologic maps.

This class builds on basic hand-sample techniques and observations of mineral identification taught in the Descriptive Mineralogy class, the only prerequisite for this class.

Reference materials will be provided. The class textbook will be the same as for the prerequisite class, Simon & Schuster's *Guide to Rocks and Minerals*.

This 'n' That... General Announcements

Fall Classes

The Fall session starts Monday, September 11.
Juniors' classes will begin Saturday, September 16.

SDMG September Board Meeting

Monday, September 18, 2017
7pm, SDMG bldg.

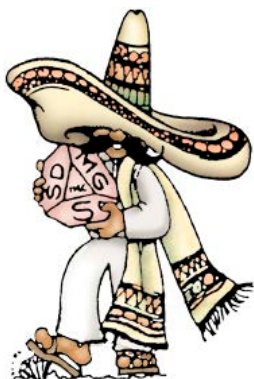
Membership Renewals for 2017–18 Due NOW

Don't forget to send in your membership renewal form. **SDMG** classes are open to members only, so don't put it off any longer! (The renewal form can be found at the end of this bulletin.)

School Closure Schedule 2017

Closure date	Description
Sat, Sept. 2 – Sun, Sept. 10	Labor Day shutdown, one week.
Mon, Sept. 11	Fall classes begin.
Fri, Sat & Sun, Nov. 3, 4, 5	Gem Diego Show shutdown, three days. (Everyone's help is needed with your club's show.)
Thu, Nov. 23 – Sun, Nov. 26	Thanksgiving shutdown, four days. Reopens Mon, Nov. 27.
Mon, Dec. 18, 2017 – Mon, Jan. 1, 2018	Christmas and New Year's shutdown, two weeks.
Tue, Jan. 2, 2018	Winter Classes begin.

Login to the **SDMG**
member website
to view the master calendar
for 2016-17
www.sdmg.org/sdmg-members/
check the eNewsletter
for login credentials



Gem Diego Show

SDMG's Annual Extravaganza Coming Soon!

Saturday and Sunday, November 4–5, 2017

By Bob Hancock, Show Chairman

Venue: Al Bahr Shrine Center

5440 Kearny Mesa Road, San Diego, CA 92111

Time: Saturday 9:30am – 5:00pm

Sunday 10:00am – 4:00pm

Admission & Parking: Free.

Website: www.sdmg.org/sdmg-public/events/2017/gem-diego-show

VOLUNTEERS NEEDED

- Haulers
- Skirting crew
- Security
- Selling staff
- Exhibitors
- Demonstrators

Volunteer Committee Mtg: Monday, September 18 at 6:00pm (before the Board Mtg at the SDMG Bldg.)

Show Set-Up: Friday, November 3 (Meet at Al Bahr Shrine)

9:00am – Loading Crew

10:00am – Skirting and other Volunteer workers

Noon – Unload truck, set up cases

2:30pm – Exhibits go in cases

3:00pm – Demos & dealers set up

Show Break-Down: Sunday, November 5 at 4:00pm

EXHIBITORS and DEMONSTRATORS, BUYERS and SELLERS, now is the time to start preparing for **San Diego Mineral & Gem Society's** annual Gem and Mineral Show. **Gem Diego** features 14 high quality Gem and Mineral Dealers selling gemstones, minerals, beads, jewelry, lapidary equipment and supplies. Demonstrations include: Wire Wrapping, Faceting, Lost Wax Casting, Silver Chain Making, Intarsia, Sphere Making. **GSSD** will provide Gemstone Identification free of charge, and there will be door prizes and a raffle.

This year, we really need Volunteers. Look for the Show sign-up sheets, which are in the casting room of the **SDMG** building. Pick one or more activities that you can help with and sign up! It's fun, you'll learn a lot, and meet a bunch of your active fellow rockhounds. You'll be proud of your club and amazed when you see how beautiful **YOUR** show turns out. Call any show committee member to get more information, and Demonstrators and Exhibitors, don't forget that you need to plan and start your projects early in order to have them ready in time for the show.

SUPPORT YOUR CLUB & PARTICIPATE!

To set up a show of this magnitude, **SDMG** will need many volunteers. If you would like to help:

1. **Sign up** on one of the clipboards located in the Silver Casting room at SDMG (available mid-September);
2. **OR contact** any one of the members (see list at right);
3. **OR attend** the Committee Meetings.

**Please lend a helping hand
to make our show a success.**

Ye Olde Show Committee

Chairman	Bob Hancock (619-889-6886)
Secretary	Anne Schafer
Treasurer	Wayne Moorhead
Advertising	Rich Yarbrough
Signs & Flyers	Mike Harlow
Club Booth	Jennifer Stapp & Peggy Leibitzke
Dealers	Garry Cannon
Demonstrators	Jackie Leverone & Dianne Hall
Exhibits	Ellen Riceman
Fire Permit/City Liaison	Garry Cannon
Door Prizes	Simon King & Gladys Walker
Electrical	Rich Yarbrough & Volunteers
Security	Doug Peeler & Volunteers
Table Skirting	Anne Schafer, Elbert McCune, Donna Beers & The Cast of Thousands
	Andy Anderson, Donna Beers, Doug Peeler, Dave Smith, Rocio Bergum & Jill Williamson
Members-At-Large	

email us at gemdiego@sdmg.org
include the committee member you wish to contact



by Anne Schafer, Coordinator

“HOW THE WEST WAS FUN” was an inspired theme choice of the 2017 San Diego County Fair organizers which exhibitors and visitors alike embraced enthusiastically. This year there were 352 competitive entries and more than 75 display cases on view in the **Gems, Minerals & Jewelry Dept.** A lot of folks got into the spirit of the theme and came dressed up in western attire or Steampunk costumes, or their own costume creations inspired by the Wild West of yesteryear. Attendance was high – in the top five of Fair history – with 1.565 million visitors.

Demonstrations varied daily. They included faceting, chain-making, fossil preparation, wax carving, wire-wrapping, bead-stringing, and more. Free gem identification was provided by the **Gemological Society of San Diego (GSSD)**, and our knowledgeable staff provided daily docent tours of the exhibits, with kids making a beeline to sift for treasures in the sand pile.

The Mineral of the Year for 2017 was Lead. The committee couldn't settle on a single Fossil of the Year, so there were two in 2017: **Trilobites and Marine Fossils.** There were two new jewelry categories based on the Fair theme: **How the West was Fun** and **Handmade Bola Tie.** Steampunk was a jewelry theme carried over from last year.



Top. Exhibit featuring artifacts used in prospecting during the Gold Rush era.

Middle. Donna Beers and Dave Smith designed a case with a western theme featuring the work of the SDMG casting class students and instructors to show the steps of metal casting.

Bottom. Examples of the special jewelry categories based on the “How the West was Fun” theme. **Left:** Diane Scholfield’s “Travel is the Key to Life” choker necklace won second place in the Steampunk jewelry category. **Center:** Denny Turner produced a “Lady’s Bola Tie” in stamped silver adorned with rhodochrosite cabochons. **Right:** Melinda Layden’s “Top to Toe” necklace is a composition of cowboy hat and boot charms framing a western shirt. It was fashioned using the seed beading technique; her entry took third place in the Fair theme jewelry category. Photos: L. Thoresen.



The entries showed off an impressive range of technical and artistic skills, with some humorous interpretations of the show theme.

Exhibits this year included the ever popular fluorescent mineral room, several stellar cases of spheres; full cases of geodes and petrified wood; several cases of fossils, including petrified fossil bones; petrified wood; themed mineral exhibits, including a whole case of pyrite specimens in its myriad forms; museum quality minerals, thanks especially to **Irv Brown** and the **Malmquists**. There were educational exhibits about how to carve a rock; faceting, courtesy of **Bob Hancock** on behalf of his faceting class; casting techniques with a native American and western emphasis, courtesy of **Donna Beers** and **Dave Smith**, featuring work produced by the **SDMG** casting class students and instructors (pictured on previous page); Chinese jade, an 1880s diorama from the **SDMG museum**, an exhibit courtesy of **GIA's Richard T. Liddicoat** Gemological



Top left. Jamie Frazier and daughter Lily came all the way from Joshua Tree to visit the Gems, Minerals & Jewelry Dept. at the Fair this year. Lily was delighted to sift the sandbox in search of a buried mineral treasure.

Top right. Danielle Polley's "Under Big Sky" is a Southwest themed jewelry pendant of stamped sterling silver with a turquoise cabochon from the Sleeping Beauty Mine; her entry took second place.

Middle. Irv Brown's case featuring fine mineral specimens from his personal collection included a beautiful example of California's state mineral benitoite.

Bottom. Marilyn and Dave Malmquist had many entries in many categories. Their case of mixed minerals shown here took the first place award.

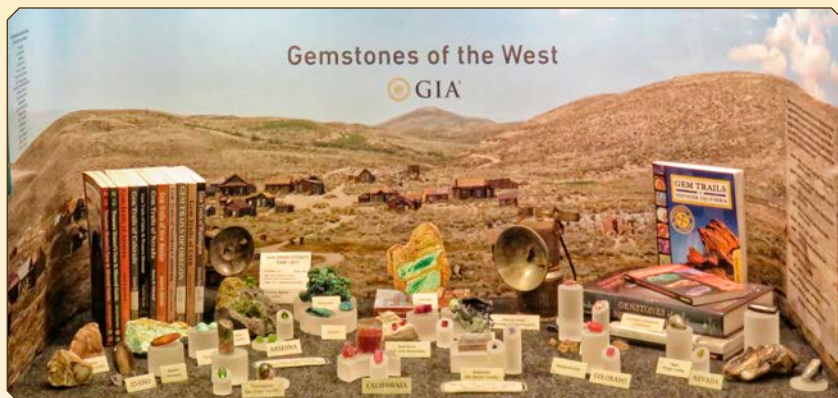
Photos: L. Thoresen.

Library show-cased Gems of the West with a selection of guidebooks about where to find them; and Agates & Jaspers from the Mojave Trails National Monument, courtesy of **Lisbet Thoresen, Bill Depue, Danny and Vivian Watts and John Pickett.**

The exhibits were really wonderful this year, with **SDMG** members submitting 120 competitive entries among 352 in all. There were many winning entries represented in virtually every category courtesy of **SDMG** members. Among the stellar exhibits, we were wowed by **SDMG** instructor **Bill Brisebois** sweeping seven of ten first place awards for his entries in the faceting categories. **Meg Berry** took several awards in faceting and carving categories, as usual, but notable especially was the heartwarming expression of affection and appreciation shown by her students who entered an exhibit case honoring **Meg's** incredible career. The **Cannons** always delight with their entries, with **Garry** taking awards for minerals and fossils exhibits and **Angie** putting together another impressive case and winning the **A. Leo Hortensky Memorial Award** for best single mineral worldwide.

Top. GIA's Richard T. Liddicoat Gemological Library took a top award in the educational category for an exhibit on "Gemstones of the West," which featured guide books on collecting areas where some of the gems on display will have originated.

Middle. Left and right: A small selection of the many fine examples of faceted gems on display courtesy of Meg Berry, Tim Sandiford, Charles Shupe and David Sullivan. Bill Brisebois was a spoiler who took first place in almost every class in which he had an entry.



Bottom. One of Meg Berry's entries was an exhibit showing all the steps in carving precious gems. Her exhibit featured many examples of her freeform compositions with material originating from the historical gem localities in North San Diego County.

Photos: L. Thoresen.

The complete list of winning entries can be found on the SDMG website at:
www.sdmg.org/pdf/SDFair2017-GMJ-Results-Division.pdf (by class/division)
www.sdmg.org/pdf/SDFair2017-GMJ-Results-Name.pdf (by name)

SDMG winners and pictures from the 2017 exhibition
at the Gems, Minerals & Jewelry Dept.
can be found on the **SDMG** website at:

www.sdmg.org/pdf/SDFair2017-GMJ-SDMG.pdf

Congratulations to one and all!

Thanks to our Volunteers & Vendors!

COORDINATOR ANNE SCHAFER had a great team to make the **Gems, Minerals & Jewelry Dept.** a resoundingly successful attraction at the Fair. Thanks to **Wayne Moorhead, Rich Yarbrough, Peggy Leibitzke** and **Jennifer Stapp**. A big round of thanks also to key **SDMG** volunteers, including **Mike Harlow, Tim Bickford** and **Wayne Leibitzke**. Both Navy and Marine volunteers helped with set-up for three days: they did the heavy lifting, literally, by hauling, cleaning and painting. Two 18-year old high school students joined the **Gems & Minerals Dept.** staff this year to help out during the Fair: **Conner Tisdale** and **Roen Hickok**.

It is no secret that to make the **Gems, Minerals & Jewelry Dept.** a destination not to be missed at the Fair, it takes a lot of dedicated Staff and Volunteers to explain to an interested public what makes all the displays so very remarkable. They kept the Hall safe and secure, the exhibits were kept sparkling clean, and the whole hall was lit to show off the displays to best effect. As ever, the Vendors attracted lots of traffic to their booths, offering people the chance to buy some special mementos at great prices. Their participation is always an enhancement to our venue, and we are grateful for their the participation! Thanks to one and all for all you have done.

Top. GMJ exhibit hall. **Middle.** Vendors are ready to great visitors on opening day. **Bottom.** Anne Schafer with exhibitor Carl Cobb and volunteer staff Tim Bickford deinstalling the exhibits. Photos: L. Thoresen.





Gemstone Exhibitors

Simon King	Patricia Miklik
Mark Elmendorf	Loretta Evans
Lee Bennett	Dave Smith
Elbert McCune	Donna Beers
Mike Harkleroad	Lu Ann Benton
Stephanie Griffin	

Fair Facetors

Lu Ann Benton	Bill Patterson
Dave Smith	Robert Hanson
Jamie Tollefson	Stephanie Griffin
Elbert McCune	Mike Harkleroad
Lee Bennett	James Curtis
Inna Rudykh	Morna Morimoto

by Bob Hancock

Thank you to our Gemstone Exhibitors

I wish to Thank our Exhibitors who displayed gemstones in the Educational Class Display Case at the San Diego County Fair of 2017. The display case is made up of gemstones produced by students and Instructors of the San Diego Mineral & Gem Society. Our display case this year won an “Award of Merit” (a green ribbon and a cash award of \$50.00), which is the highest award in this category. Congratulations to the exhibitors and “Well Done.”

Thank you to our Fair Facetors

Demonstrators at the Fair: Facetors, of the **San Diego Mineral and Gem Society**, held faceting demonstrations, on weekdays throughout the entire time the San Diego County Fair was open. The facetors cut sparkling gem stones on the UltraTec Faceting Machine, while explaining the various steps to the thousands of visitors who came by to watch.

Hoads people stopped by to observe the faceting demonstration, asking many questions and inspecting the machine, as well as our finished gemstones. Many folks were totally amazed at seeing a live demonstration of gem cutting, and the quality of workmanship produced by our students and instructors.

I want to congratulate all of our factors on their outstanding performance, and thank you for a job well done.





77th Annual CFMS-AFMS Convention & Show

hosted by
Ventura Gem & Mineral Society

review by Lisbet Thoresen

THE 77TH ANNUAL CFMS-AFMS CONVENTION AND SHOW was held June 9th through 11th at the Ventura Fairgrounds and was hosted by the **Ventura Gem & Mineral Society (VGMS)**. The **AFMS** show comes to a California venue only once every seven years, and **VGMS** delivered – big time – on the event theme: “Ventura Rocks the Nation!” The weather was a little gray (better than sweltering hot), but the seaside venue provided easy access and parking. Two big buildings provided ample space for the throngs of visitors and all the vendor booths and exhibits.



VGMS convention and show committee members welcome CFMS affiliate clubs, AFMS, and the public to Surf City, USA, where everyone had a rockin' good time. Photo courtesy of Ventura Gem & Mineral Society.

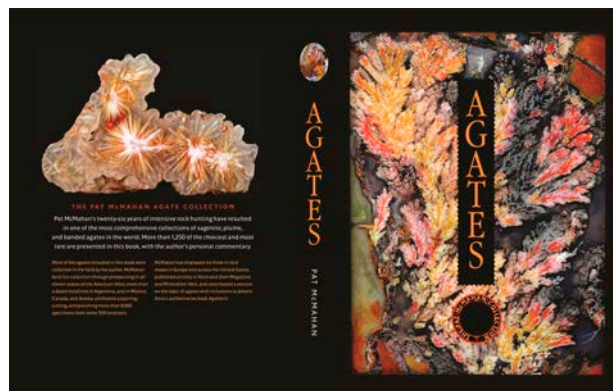
There were more than 60 dealers and many demonstrators. The booths, with several educational topics aimed specifically at the Pups, were terrific. My friends who teach elementary school would have been thrilled for their students to visit the show and learn about minerals in such an engaging, hands-on way. All the friendly and knowledgeable presenters made

the earth science and gem & jewelry art topics really interesting. Great posters, specimens, dioramas, and interactive activities invited a closer look, especially the booths on microscopy, volcanology, the California Oil Museum, paleontology, meteorites, and agates.



Bill Depue had a booth displaying his lapidary art crafted from self-collected agates from the Mojave Desert. He demonstrated cabbing using one of Diamond Pacific's lapidary belt sanders. FYI: Bill Depue and his nephew Don, along with the Diamond Pacific Staff were CFMS's 2016 Golden Bear award recipients. Photo: Lisbet Thoresen.

Seeing old friends and getting the chance to say hello is always nice, but meeting vendors and exhibitors who were new to me made the show all the more worthwhile. For example, **Pat McMahan's** collection of agates and his gorgeous book was a wonderful introduction – how had I missed him before? Check out his web site at: agateswithinclusions.com – you're in for a treat.



According to **VGMS**, the show broke the record for the number of exhibitors, especially the number of competitive exhibits. There were displays of past-presidents of **CFMS** and **AFMS**, respectively, with each item featuring a picture and a gem-mineral specimen – it was a touching tribute. There were impressive displays of fossils, meteorites, mixed minerals, and jewelry and lapidary.

The winners of the competitive entries can be found in the CFMS August 2017 newsletter at:

www.cfmsinc.org/newsletter/news2017/008newsAug17.pdf#page=7

Two friends who live nearby in Santa Barbara came with me to the show. They had never been to a gem mineral show before – they knew exactly nothing about rocks and gems and fossils. I figured after 45 minutes they might be ready to go, but every booth and display was a delightful revelation – we stayed for nearly three hours.

It is always nice to share one's enthusiasm for gems and minerals with newcomers, and **VGMS** really rolled out the welcome mat, making the introduction a wonderful experience. Kudos to **VGMS President Diane Cook** and the show committee members:

Nancy and Jim Brace-Thompson, Angela and Luther Brown, Louisa Carey, Susan Chaisson-Walblom, John Cook, Kathryn Davis, Laura Driskell, Tony Fender, Brett Johnson, Pat and Bural LaRue, Shirley Layton, Deb Sankovich, Richard Slyker, Phyllis and Dick White, Terry Wilson, and Ron Wise.

Some highlights from the show



Lisbet, SDMG member from Temecula, and Rochelle, from Santa Barbara, make new friends at the Ventura show. Photo: Mario Barattucci.

Dept of Interior Reviews: Advisory Councils and 27 National Monuments on the block

September 1, 2017

by Lisbet Thoresen, Public lands representative for SDMG

Suspension of RACs and DAC meetings

WAY BACK IN MAY the **Department of Interior (DOI)** suspended all meetings of **BLM's** advisory boards and councils, including 220 **Resource Advisory Councils (RACs)** and the **Desert District Advisory Council (DAC)** in California. The councils were established by the **Federal Land Policy and Management Act**, or **FLPMA**, (43 U.S.C.. 1701 et seq) as a citizens' advisory group in 1976. Inadequate public engagement in some regions was said to have prompted the review and temporary suspension of activities. (Have to say, **BLM** field offices in southern California work hard to make the **DAC** a productive channel of communication with the public.)

National Monuments review

The same reason – lack of public engagement – was cited for justifying a review of 27 national monuments (**NM**) designated under authority of the **Antiquities Act of 1906** (Pub.L. 59–209, 34 Stat. 225, 54 U.S.C. § 320301–320303) by presidents **Clinton**, **Bush**, and **Obama**. The purported lack of public involvement prior to the designations was criticized as executive overreach, notwithstanding the explicit discretionary authority given under the **Antiquities Act**, so **DOI** was expected to recommend shrinking some or all of the monuments, or even abolishing the protective designations altogether.

President Trump has publicly advocated transferring control of federal lands to the states, which would enable them to use their discretion to greenlight commercial development and stimulate

jobs creation for local economies. In general, state representatives, as well as county supervisors tend to support ceding control to their jurisdictions.

On June 30th, in a letter to **Secretary Zinke**, 17 House Republicans, including California representatives **Paul Cook** (8th district), **Darrell Issa** (49th district), and **Tom McClintock** (4th district), advocated eliminating nine monuments and reducing the size of 14 others.[1] **ALAA** has supported the recommendation.

Size matters

Secretary Zinke's review focused on monuments with large footprints – over 100,000 acres. In California, likely targets for downsizing include **Giant Sequoia** (328,315 acres) and **Mojave Trails** (1.6 million acres). The **Tulare County Board of Supervisors**, in a 3-2 vote, supported **Rep. McClintock** (R-Bakersfield) in advocating reduction of **Giant Sequoia** to 90,000 acres.[2] Home to 38 of the 39 sequoia groves in existence, critics say the reduction would cut deeply into the protective buffer zone surrounding them.

Regarding **Mojave Trails**, **House Majority Leader Kevin McCarthy** (R-Bakersfield) and **Rep. Paul Cook** (R-Inyo, Mono, and most of San Bernardino Counties) favor reducing it significantly, while **Senator Dianne Feinstein** (D-CA), who asked **President Obama** to create the monument, wants it to remain intact. **Rep. Cook** wants to scale back **Mojave Trails** by at least 500,000 acres to benefit mining and other economic interests, notably Cadiz Inc., which proposes to tap the aquifer beneath the monument, and pipe it to Orange County.[3] Prior to

- 1.) Available online at: <https://westerncaucus.house.gov/sites/westerncaucus.house.gov/files/documents/6.30.17%20Final%20letter%20to%20Zinke%20Antiquities%20Review.pdf> or short URL: <https://goo.gl/u5xYBr>
- 2.) The Porterville City Council voted against the reduction despite strong local public support of preserving the monument, see the op-ed by retired USFS district ranger Tom Kuekes, available online at: <http://www.sfchronicle.com/opinion/openforum/article/There-s-no-support-to-shrink-Giant-Sequoia-11270838.php> or short URL: <https://goo.gl/A6tcvr>
- 3.) The proposed Cadiz Water Project was discussed in the May 2017 issue of *The Pegmatite*, available online at: <http://www.sdmg.org/articles/201705/the-rime-of-the-mojave-mariner-sdmg-pegmatite-201705.pdf> or short URL: <https://goo.gl/Nvq6if>; a comment letter opposing the Cadiz Project was submitted to Rep. Cook and Secretary Zinke by the

the monument designation, 600,000 acres that are now within the monument's boundaries had been approved for renewable energy projects, so **Mojave Trails** may be scaled back by as much as one-third. Recreational users should not expect access to revert to what they enjoyed previously – fences will go up around all the new-built facilities.

RACs/DAC & Monument status – pending

By now, **DOI** has established a consistent pattern of actions that contradicts its stated motives and objectives – its review process has lacked precisely the public engagement and transparency that was said to justify the advisory council review in the first place. According to **BLM**, **DOI's** review is expected to conclude sometime in September, and guidance should be forthcoming. That means the earliest the **DAC** meetings may convene again will be in October. In the meantime, behind closed doors and out of public view, land use policy planning is being conducted without public scrutiny or input.[4]

Secretary Zinke submitted his final report on the national monuments review to the president on August 24th. Only a summary was made available to the public, so details of **Zinke's** recommendations are not known currently. If **BLM** has been briefed, the agency isn't saying. **DOI** released a summary of the report, which reiterates what **Zinke** has said publicly previously – he recommends reducing the size of “a handful” of monuments, and none should be abolished. No one knows how the recommendations will influence the president's actions.

What is known is that **DOI** issued a preliminary report in June that recommended downsizing **Bears Ears** and **Grand Staircase-Escalante**, both in

Utah. In July and early August, **Zinke** recommended making no boundary changes to several monuments, including **Grand Canyon-Parashant** in Arizona, **Upper Missouri River Breaks** in Montana, **Canyons of the Ancients** in Colorado, **Craters of the Moon** in Idaho **Hanford Reach** in Washington, and **Sand to Snow** in California.

What is also known is that conservation and public advocacy groups are pledging legal action, if the president attempts to cut back or eliminate any of the monuments by executive order. Legal precedents dating to 1907 have upheld presidential prerogative to create or enlarge national monuments under the **1906 Antiquities Act**. The statute contains no explicit language about abolishing or downsizing a national monument, and no past president has ever attempted anything close to what **President Trump** is now contemplating.

Many legal experts think amending existing statutes, including giving the president explicit authority to reduce or eliminate national monuments, can only be undertaken by Congress enacting new legislation. Conservation and public advocacy groups are bound to fight strenuously, whether it's Congress or the president who attempts to undo the protective designations.

How events unfold in the coming months is anyone's guess, but one takeaway from **Secretary Zinke's** monument review sends a clear message about the intensity of current public sentiment on the issue: 2.9 million letters were submitted during the comment period – more than for any other issue – ever.[5] Public support is overwhelmingly in favor of preserving or adding more national monuments, with 99% of the letters supporting preservation, expansion, or addition.[6]

author (LT) and co-signers, available online at: https://lthoresen.com/pdfs/Cadiz_Water_Project_Zinke_Cook_letter_Oppose_20170731.pdf or short URL: <https://goo.gl/TPGUcj>

- 4.) A critical assessment of the monuments review process appeared in Coachella Valley's *Desert Sun* on August 24th, available online at: <http://www.desertsun.com/story/news/environment/2017/08/24/california-national-monuments-trump-zinke/593759001/> or short URL: <https://goo.gl/ttG96H>
- 5.) The author (LT) and co-signers to a comment letter on the NM review advocated in favor of retaining them while also requesting accommodation in NM management plans for recreational activities, including rockhounding, available online at: https://lthoresen.com/pdfs/DOI-2017-0002-0001_NM_review_comment_ltr_1k1-8xg3-6ix9.pdf or short URL: <https://goo.gl/ug26aA>
- 6.) L. Parker. 24 August 2017. Interior Asks to Shrink National Monuments—Here's What That Means. *National Geographic*. Available online at: <http://news.nationalgeographic.com/2017/08/trump-shrinks-national-monuments-zinke-interior-report-public-lands/> [Accessed 29 August 2017.] or short URL: <https://goo.gl/C3p7hV>

ON THE GO ... TO A SHOW



SEPTEMBER

8–16 **DENVER, CO – Colorado Mineral and Fossil Fall Show 2017**
Sponsor: Rocky Mountain Gem and Mineral CO-OP
Where: Crowne Plaza Denver Airport/Convention Center (formerly Ramada Plaza Hotel)
 15500 E 40th Ave, Denver, CO 80239
Hours: 10:00am–6:00pm daily, except Sun, 9/18, 10:00am–5:00pm
Admission and parking: Free admission and parking. Free shuttle bus between hotel and airport.
Website: www.rockygems.com
 170 dealers from around the world.
(Rocky Mountain Gems and Minerals bought the Colorado Mineral and Fossil Show from the Marty Zinn Expo.)

9–17 **DENVER, CO – Denver Coliseum Mineral, Fossil, Gem & Jewelry Show**
Where: Denver Coliseum
 4600 Humboldt St., Denver, CO 80216
 National Western Complex
 4655 Humboldt St, Denver, 80216
Hours: 9:00am–6:00pm daily
Admission and Parking: Free.
Website: www.ColiseumShow.com
 The Coliseum venue now includes the adjacent National Western Complex ("NWC"). 400-500 dealers at four shows where everyone can buy fine mineral specimens, fossils, dinosaurs, gems, gemstones, lapidary, cabochons, artisan and antique jewelry, beads, crystals, meteorites, metaphysical, gold, silver, turquoise, Native American items, interior decor, metal art, miner's rough, tools, supplies, and more.



15–17 **DENVER, CO – 50th Anniversary Gold & Silver Show Denver Gem & Mineral Show**
Where: Denver Mart Expo Hall
 451 E. 58th Ave., Denver, CO 80216 (I-25 at Exit 215)
Hours: Fri 9:00am – 6:00pm, Sat 10:00am – 6:00pm, Sun 10:00am – 5:00pm
Admission: Adults \$7.00, Teens (13–19) and Seniors (65+) \$4.00, Kids 13 and under (accompanied by an adult) Free.
Website: www.denvermineralshow.com

This year's theme is Gold and Silver. Nearly 100 special exhibits featuring competitive cases and non-competitive cases, 150 dealers, featured presentations, plus scheduled presentations.

JOHN E. GARSOW gems & minerals

September 8 – 16

Colorado Mineral & Fossil Show

Crowne Plaza
 Denver Airport/Convention Center
 15500 E 40th Ave.
 Denver, CO 80239

October 8

**Fallbrook Gem & Mineral Society's
2017 Fall Festival**

123 West Alvarado St.
 Fallbrook, CA 92028

Facet Rough • Cabbing Rough
 Jewelry • Mineral Specimens

www.johngarsow.com

SEPTEMBER 9-17, 2017

Major New Expansion in 2017

**Still in Both Levels of the Denver Coliseum <AND NOW>
all 3 Levels of the National Western Complex as well**



OCTOBER

4–8 JOSHUA TREE, CA – 42nd Annual Gem & Mineral Show

Sponsor: Hi-Desert Rockhounds/Morongo Basin Sportsman's Club of Joshua Tree

Where: Sportsman's Club
6225 Sunburst Street, Joshua Tree, CA 92252

Hours: opens daily at 9:00am

Admission and parking: Free.

Contact: 760-366-2915

or jtsportsmans@gmail.com

Website: jtsportsmansclub.com/gem.html

or flyer at:

jtsportsmansclub.com/ShowFlyerFall2017.pdf

Over 60 Dealers featuring rocks, minerals, fossils, gemstones, jewelry, beads, lapidary supplies and items, mining equipment, gemstone rough, findings, geodes, slabs, meteorites, crystals, carvings, jewelry boxes, New Age items, gifts, collectibles, books, tools and more! Free rock and mineral identification, free rocks for Kids, learn techniques of gold panning on Saturday.

7–8 BORON, CA – Mojave Mineralogical Society Annual Show

Where: Boron Recreation Park
26998 John St., Boron, CA 93516

Hours: Sat 9:00am – 5:00pm, Sun 9:00am – 4:00pm

Admission: Free

Contact: Bruce Davies 760-338-8829

or daviesb@yahoo.com

Web: www.facebook.com/groups/MojaveMineralogicalSociety

8 FALLBROOK, CA – Fall Festival of Gems

Sponsor: Fallbrook Gem & Mineral Society

Where: Fallbrook Gem & Mineral Facility
123 West Alvarado St., Fallbrook, CA 92028

Hours: 9:00am – 4:00pm

Admission and Parking: Free.

Contact: Janice Bricker, 760-728-1130

or fgms@sbcglobal.net

Website: www.fgms.org

14–15 TRONA, CA – Searles Lake Gem & Mineral Society 76th Gem-O-Rama 2017

Where: SLG&MS Lapidary and Show Bldg
13337 Main St. (corner of Main and Trona Rd.)

Hours: Sat 7:30am – 5:00pm, Sun 7:30am – 4:00pm

**Vista Gem & Mineral Society
2017 Show**

October 7 – 8, 2017

Antique Gas & Steam Engine Museum

2040 N. Santa Fe Ave.
Vista, CA 92083

Saturday 10AM to 5PM

Sunday 10AM to 4PM

Contact: Kelly Hickman

760-639-0447

or kellyahickman@hotmail.com

***Fabulous vendors
in a fabulous rustic setting***

If you've never been to a VGMS show at the
Antique Gas & Steam Engine Museum,
you've gotta see it – it's a hidden treasure!



Admission and Parking: Free.

Contact: Jim or Bonnie Fairchild 760-372-5356

or slgms@iwvisp.com

Website: <http://goo.gl/sVGrBJ> (short url)

Purchase Searles Lake pink halite, 20 dealers, 50 exhibits, geode cutting and sales, demonstrations, games, gem dig, grand prize drawing, hourly door prizes, snacks and drinks, pancake breakfast both days, prizes, Old Guest House Museum, Trona's History House and Field Trips both days.

Annual Big Sur Jade Festival

October 6–8, 2017

The biggest show of its kind
in North America

Vendor Art

FREE Lectures and FREE demonstrations

Fine Food and 3 days of live entertainment

Dick Horan is Hosting
a Pocket Piece competition

Dick and Kenny Comello will hold a
Jewel of The Jade Festival contest
(pieces must be under 10 lbs.)

Location: Pacific Valley School
69325 Highway 1
Big Sur, CA 93920-9612
(across from Sanddollar
Beach)

Hours: Fri noon – 6:00pm
Sat 10:00am – 6:00pm
Sun 10:00am – 5:00pm

Admission & Parking: Free.

Info: Kirk Brock
831-402-1143

Website: www.bigsurjadefest.com



~ Estate Sale ~

www.sphereheaven.com/SandyTreasure.htm

The estate of **Sandy Berthelot** is now for sale on-line. His collection features crystals, minerals, rocks, spheres, jewelry, and lapidary carvings collected over a period of 30 years. Most of the items are available for half the original acquisition price. Over the next several months, the entire inventory of more than 6000 items will be added to the web site. Currently, there 18 pages with 45 items per page.

SANDY'S TREASURE TROVE



WEST COAST – FALL GEM & MINERAL SHOW



*Chrysocolla
Ray Mine, Pinal Co., AZ
Photo by Jeff Scovil©*

November 10-12, 2017
Santa Ana, CA

Holiday Inn - Orange County Airport
2726 S. Grand Avenue

(take 55 Fwy Exit 8 for Dyer Rd to S. Grand Ave)

Shop with 78 Great Dealers!

Minerals ♦ Fossils ♦ Gems ♦ Jewelry ♦ Beads ♦ Meteorites
Decorator Pieces ♦ Lapidary ♦ Metaphysical & More!

FREE ADMISSION ♦ FREE PARKING ♦ WHOLESALE ♦ RETAIL

LLD Productions, Inc., P.O. Box 665, Bernalillo, NM 87004 ♦ 505-867-0425 ♦ mzexpos@gmail.com
www.mzexpos.com [Facebook.com/mzexpos](https://www.facebook.com/mzexpos)



KRISTALLE

Est. 1971

Wayne and Dona Leicht

WE ARE CASH BUYERS FOR SINGLE SPECIMENS AND ENTIRE COLLECTIONS!

875 North Pacific Coast Highway - Laguna Beach, CA 92651

949.494.5155 - fax: 949.494.0402

e-mail: info@kristalle.com



San Diego Mineral & Gem Society, Inc.

A Non-Profit Educational and Scientific Organization

Membership Information:

Interested in minerals, fossils, lapidary, gems,
or handcrafted jewelry? We are, too!

Adults (18 and older): \$30.00

Second adult, same address: \$10.00

Junior (under 18): \$10.00

Membership application forms
are available on-line at www.sdmg.org,

and at the Village Silversmiths Shop
in the SDMG Building,

or by contacting the SDMG Membership Secretary
membership@sdmg.org

or by writing to her at:

San Diego Mineral & Gem Society
attn: Angela Cannon

P.O. Box 710783, Santee, CA 92072

Please allow up to 3 weeks for processing your application

MAKE CHECKS PAYABLE TO:

San Diego Mineral and Gem

SDMG Library

SDMG Bldg.

Andy Anderson

Hours: 4 to 6 pm, Wednesdays

Reference use only, no lending.

Access the catalog online at:

<https://cloud.collectorz.com/sdmgmerklib/books>

Who may use the Library?

Membership is not required to view the catalog, but only
SDMG members may come use the reference library.

We Need Volunteer Assistant Librarians.

Members willing to volunteer in the Library
will enable us to extend the hours of access.

Contact Andy:

aanderson@sdmg.org

if you can help out.

CLASSIFIED ADS

OCEANVIEW MINE

TOUR & SCREENING TRIPS:

Sundays, 11:00am to 3:00pm

For more information
please visit www.digforgems.com

or call Jeff Swanger at 760-415-9143

Reservations required.

\$75. Adults \$60. Children (ages 5 to 11)

Family rates available.

HIMALAYA MINE TAILINGS:

Thursday-Monday, 10:00 am to 3:00 pm.

At the Lake Henshaw Resort on Highway 76.

Adults, \$75 per day. Kids 12-15, half price.

Screening tables, buckets, and shovels provided.

Call (775) 830-5797

or (775) 772-7724 for more info

Website:

www.highdesertgemsandminerals.com/

WEBSITES

SDMG:

www.sdmg.org

CFMS:

www.cfmsinc.org

AFMS:

www.amfed.org

PUBLIC LANDS:

www.amlands.org

BLM:

www.ca.blm.gov

BOB'S ROCK SHOP:

www.rockhounds.com

MUSEUMS:

www.sdnhm.org

www.nhm.org

www.amnh.org

www.mnh.si.edu

www.gia.edu



CLASS SCHEDULE – 2017

REGISTRATION IS REQUIRED BEFORE ALL CLASSES.

Email school@sdmg.org for class availability before attending any class to find out when the class starts and ends, if special materials are required and whether you qualify to attend. Fee is \$5.00 per class; it is usually easier for instructors if payment is made for a full month; cash or checks only, please. **Classes are open to members only** and students must read and follow the **School Rules** available in the classroom and at:

<http://www.sdmg.org/class-schedule/school-rules.pdf>

CABOCHONS	Tue	6 – 9pm	Tim Bickford
	Wed	9 – 11:30am	Jim Claypool
	Wed	12:30 – 3:00pm	Jim Claypool
	Wed	7 – 9pm	Andy Anderson
	Thu	7 – 9pm	Jon Evans
FACETING	Tue	noon – 3pm	Elbert McCune
	Tue	7 – 9pm	Jerod Schneider
	Wed	9am – noon	Bob Hancock
	Wed	noon – 3pm	Donna Beers
	Wed	7 – 9pm	Elbert McCune
	Thu	7 – 9pm	Bill Brisebois
BEG. METALS FABRICATION	Wed	6 – 9pm	Stephanie Griffin
	Thu	9am – noon	Denny Turner
	Thu	1 – 4pm	Denny Turner
	Sun	5 – 8pm	Andy Anderson
ADV. METALS FABRICATION	Tue	9 – 11am	Jill Williamson
	Tue	noon – 3pm	Jill Williamson
	Tue	7 – 9pm	Al Fuente
	Wed	9am – 3pm	Denny Turner
	Wed	9am – 3pm	Jackie Leverone
	Thu	7 – 9pm	Ellen Riceman
	Fri	9:30am – noon	Dee Smith
	Fri	12:30 – 3:00pm	Dee Smith
	Sat	4 – 7pm	Andy Anderson
CASTING	Mon	1:30 – 7:00pm	Rocio Bergum
	Tue	9am – 2pm	Dave Smith
	Fri	5 – 7pm	Rich Yarbrough
STONE SETTING	Mon	by appointment	Miguel Asmar
ROCK CARVING	Mon	9am – 1pm	Jan Kunsu
SPHERE MAKING	Sat	1 – 3:30pm	Paul Williams
JUNIORS	Sat	10am – 1pm	Staff
DESCRIPTIVE MINERALOGY	Wed	6:30 – 9pm	Doug Peeler

Thomas M. Schneider Quality Gemstones



861 6th Avenue, Suite 517

San Diego, CA 92101

www.tmsgems.com

Ph: 619-232-2624

Fax: 619-232-2213



THE ANNUAL SINKANKAS SYMPOSIUM – TANZANITE & TSAVORITE
Saturday April 14, 2018, Carlsbad, CA

www.sinkankassymposium.net

*"The best gem mineral symposium
in North America."*

– John Koivula

AL'S OPAL IMPORTS & LAPIDARY

**3684 Fairmount Avenue
San Diego, CA 92105**

619 282-1700

Al Ramirez, proprietor
U.S. Navy WWII South Pacific veteran

Unmounted Australian and African Opals

- Lapidary equipment new or used
- Tumblers, diamond blades, belts and grits
- Rough rock for faceting, slabbing or tumbling
 - Recycle your gold or silver jewelry into new designs or repair
- A variety of finished jewelry in silver or gold
 - Faceting gemstones

All work done on premises

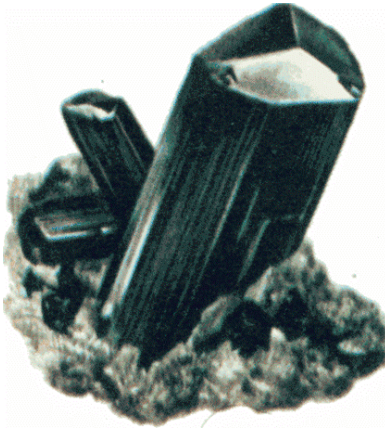
Layaway Available



HOURS:

**Monday thru Friday
8:30am to 3:30pm**

**Saturday
9:00am to 1:00pm**



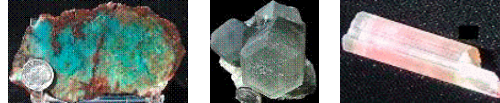
MinersGallery.com

Rock Slabs, Bulk rock, Crystals, Jewelry,
Fossils, Gems and Petrified Wood.

Phone: (619) 445-0800

richard@minersgallery.com

www.minersgallery.com



Minerals and crystals from around the world

*** ROCKS * MINERALS * GEMS * JEWELRY MAKINGS ***

*** LARGEST INVENTORY ***

*** * BEST QUALITY * ***

*** LOWEST PRICES ***

*** NEW ARRIVALS DAILY ***

SOUTH AMERICAN IMPORTS

Direct Importers

2461 San Diego Ave. #104

San Diego, CA 92110

In Old Town, in Coyote Café Shopping Center

Tel: (619) 299-3877

OPEN EVERY DAY!

Village Silversmiths

**Bead Work
Jewelry
Slabs**

**1770 Village Place
Balboa Park
San Diego, CA 92010
619 239-8812**

**Carvings
Rocks
Cabs**



DIAMOND PACIFIC
TOOL CORPORATION
2620 West Main St. Barstow CA 92311

Our business is putting fun and pride
into your lapidary hobby or profession
by making the right tools for your needs

Astounding Selection of Minerals
& Fossils from Around the Globe
MINERS GEMS



Experts in Geology, Gemology & Paleontology

World Famous Gold Rush
Rock Shop & Mining Museum

Daily Mineral Panning and Geode Cutting

Educational Programs Available

In Old Town San Diego State Historic Park
2616 San Diego Avenue, San Diego CA 92110
619-688-1178

minersgemsandminerals@cox.net
www.minersgemsandminerals.com



San Diego Mineral & Gem Society, Inc.

A Non-Profit Educational and Scientific Organization

1.) Make Check Payable to: **SDMG** 2.) Send Application + Check to:
San Diego Mineral & Gem Society, Inc.
attn: Angela Cannon
P.O. Box 710783
Santee, CA 92072

MEMBERSHIP APPLICATION/RENEWAL

Check on the membership classification/s you are applying for (check as many as apply):

Adult **Associate** (Adult in same household as primary Adult member) **Junior** (Ages through 17)

Last Name: _____ First Name: _____

Associate Name: _____ (First and Last Name, if different from primary adult member)

Junior Name (1): _____ Junior Name (2): _____

Address: _____

City: _____ State: _____ Zip/Postal Code: _____ (+ 4 digit suffix)

Phone: _____ eMail: _____

I, the undersigned, hereby apply for membership in the San Diego Mineral and Gem Society, Inc. As a member, I will participate in SDMG activities and will help to promote knowledge of and interest in minerals, fossils, lapidary, and related subjects.

SIGNED: _____ DATE: _____

Membership dues for the period beginning July 1 and ending June 30. Dues Schedule:

\$30 – annual dues for ADULT member, anyone 18 or older. Entitles member to one subscription to *The Pocket Pegmatite* bulletin (defined as access to online PDF version of bulletin or one printed bulletin mailed to member address); member is also entitled to enroll in lapidary classes.

\$10 – annual dues for ADDITIONAL ADULT (Associate) member at same address. Additional adult member will share copy of the printed bulletin or have access to the PDF version of the bulletin online with original adult member, and will have the right to enroll in lapidary classes. If additional adult members want their own copy of a printed bulletin, they must pay the full \$30 adult membership dues.

\$10 – annual dues for JUNIOR member, ages through 17. Entitles Junior member to one subscription to *The Pocket Pegmatite*, provided no one else at the same address is already receiving a printed bulletin. The Junior will have the right to enroll in Junior class.

Your membership in **SDMG** continues to be the best deal in town, and we hope that you will agree. When you mail in your check, please note any corrections to your area code, address and include your zip+4 on your check. Please write “NO EMAIL” on your check, if you do not have an e-mail address. **The Pegmatite** monthly bulletin (September – June) is available to members online, so we encourage you to provide/procure a working e-mail address, so that you can receive notifications when the online (PDF) bulletin is posted.

You can fill in the form below, then print it out, or you can print it out and then fill in the form manually, and send it in with your check. If you need help with your renewal or have any additional questions, please contact the membership secretary via email at: membership@sdmg.org.



San Diego Mineral & Gem Society, Inc.

A Non-Profit Educational and Scientific Organization

1770 Village Place, Balboa Park

San Diego, CA 92101-1651

www.sdmg.org

WELCOME!

The SDMG Building
is located
at the north end of
Spanish Village
in Balboa Park

SDMG Museum hours:
11:00am to 4:00pm

Get information
on classes, events,
field trips, reports,
reviews, slideshows
and more at:

www.sdmg.org

ADDRESS SERVICE REQUESTED



THE PEGMATITE – SEPTEMBER 2017

Sun	Mon	Tue	Wed	Thu	Fri	Sat
27	28	29	30	31	1	2
3	4 Labor Day No GSSD Mtg	5	6	7	8 Colorado Mineral & Fossil Show begin	9 Denver Coliseum Show begin
10	11 SDMG Fall Classes start	12	13	14	15 50th Denver Gem & Mineral Show begin	16 First Junior Div Fall Class
17 Denver Shows end	18 SDMG Board Mtg 7pm, SDMG Bldg	19	20	21	22	23
24	25 SDMG General Mtg 7pm, SDMG Bldg	26	27	28	29	30