



San Diego Mineral & Gem Society, Inc.  
A Non-Profit Educational and Scientific Organization

# THE PEGMATITE

## SEPTEMBER 2018



**79th Annual CFMS Convention**  
*during the*  
**Feather River Lapidary & Mineral Society**  
**Rock Gem & Jewelry Show**

**September 15 – 16, 2018**  
**Silver Dollar Fairgrounds**  
**Chico, CA**



**Show Hours:**  
**Sat 10AM to 5PM**  
**Sun 10AM to 4PM**

**Convention flyer at:**  
[www.cfmsinc.org](http://www.cfmsinc.org)

**FRLMS website:**  
[www.featherriverrocks.org](http://www.featherriverrocks.org)

Official bulletin of the San Diego Mineral and Gem Society, Inc.

**Affiliations:** California Federation of Mineralogical Societies  
American Federation of Mineralogical Societies  
American Lands Access Association

**Sister Club:** Kingston Lapidary, Hull, England

**Publication:** *The Pegmatite* is published monthly (except July and August).

**Submission Deadline:** 3rd Tuesday of the month preceding next month's publication, unless otherwise indicated.

**Membership:** Anyone with an interest in minerals, fossils, lapidary, gems, or hand-crafted jewelry may join the Society. Contact: [membership@sdmg.org](mailto:membership@sdmg.org)

**Liability:** The San Diego Mineral & Gem Society, Inc., is not and cannot be held responsible and liable for personal injuries, for damage or loss of property at any meetings, field trips, classes, shows, or any event sponsored or recommended herein.

**Copyright:** ©2018 San Diego Mineral and Gem Society, Inc. Non-commercial reprint permission given, unless otherwise noted, provided proper credit is given.

**Street Address:** 1770 Village Place  
San Diego, CA 92101-1651

**Mailing Address:** P.O. Box 710783  
**(membership apps)** Santee, CA 92072  
attn: Angela Cannon

**Phone:** 619-239-8812

**Website:** [www.sdmg.org](http://www.sdmg.org)

**Editor:** Lisbet Thoresen, [editor@sdmg.org](mailto:editor@sdmg.org)

**Layout, Advertising:** [info@sdmg.org](mailto:info@sdmg.org)

**General Information:** [admin@sdmg.org](mailto:admin@sdmg.org)

**Change of Address:** [membership@sdmg.org](mailto:membership@sdmg.org)

**Exchange bulletins:** Send to the Society mailing address

The mission of the San Diego Mineral and Gem Society, Inc., is to disseminate knowledge of mineralogy and earth sciences; to encourage the study of these subjects; to conduct classes in mineralogy and lapidary arts; to conduct field trips for the collection and study of specimens; to encourage interest in mineralogy and lapidary arts among young people; and to procure and maintain a collection related to the earth sciences and lapidary arts.



## PRESIDENT'S MESSAGE

September 2018

by Jim Parrish

[sdmgpresident@sdmg.org](mailto:sdmgpresident@sdmg.org)

**I**T'S OFFICIAL! I was elected President for the next two years. Having done this in the past, it's nothing new. But, there are always challenges that will keep me busy. If you would like to volunteer please contact me directly.

Summer is ending and it sure went by fast. The heat isn't gone and September is usually our hottest month. It's hard to believe after surviving this past August!

The summer classes are over and the schedules for the regular school year are out. So, now's the time to get signed up. They fill up fast.

Our annual **Gem Diego Show** is normally held on the first weekend of November. But, it just didn't come together this year. So, for the first time in many years, it isn't going to happen. It's very unfortunate! A number of people worked very

hard in an effort to find a new venue to replace the Al Bahr building, which seems to have closed permanently. A large space at a reasonable price is very hard to find in the City of San Diego. If you know something we don't, please give me a call.

On a more positive note, the **San Diego County Fair** has one of the best mineral and gem exhibitions in the country. Lots of our members displayed this year and many won ribbons and cash prizes. Congratulations to all of you !!!

I'd like to thank all volunteers who have helped out this last year. It just doesn't happen without YOU!!

So, welcome back and plan on spending time participating in the many meetings, classes, field trips and other events that we have to offer.

**AXEL BROWN PEDERSEN**, longtime friend and associate of the San Diego Mineral & Gem Society has passed away. For years, Axel could be seen holding faceting demonstrations at many local gem and mineral shows, as well as being a regular demonstrator at the San Diego County Fair. The quality of his faceted stones was superb. Axel introduced many new folks to the art of faceting gemstones. He will be missed.

A memorial to celebrate his life will be held on Monday, September 17, 2018, 9:00 AM, at the Alpine Cemetery. 2495 W. Victoria Drive, Alpine California 91901. (Phone: 619-445-2525)

Following the ceremony, there will be a gathering for all, and a pot luck and BBQ, at El Monte Park, Lakeside, Ca. Please bring a dish to share.





## SDMG General Meeting

**Monday, September 24, 2018**

7pm SDMG bldg

Public Welcome!

Jim Parrish, President

## Snacks & Sharing Fall Social

*ALL MEMBERS SHOULD BRING SNACKS  
AND TREASURES THAT YOU BOUGHT OR  
COLLECTED DURING THE SUMMER*

**T**HIS WILL BE THE FIRST MEETING of the new season and what better way to start than to simply get together and look at cool ‘stuff’ while snacking away on goodies. This “stuff” can include lapidary pieces, mineral specimens, rock specimens or whatever you’d like to share. Everybody should be able to bring a snack, rock or something! What an excuse to get together and socialize! This will also be a great opportunity to share with others your stories (fact or fiction) about summer adventures, vacations, or family doings.

It will also give us a chance to meet new members, carry on with the older members and just plain “HAVE SOME FUN.” Of course, we will have some great door prizes. So, don’t forget the cash!

If for some reason you’re unable to bring something, Show up anyhow, you’re still welcome!



A nice slab of Crazy Lace Agate from Northern Mexico, Chihuahua purchased at the Searchers Annual Show at the beginning of the summer. Photo: L. Thoresen.

So, please bring a snack or a rock to share along with your friendly faces. Join us for some fun!

**thenat** | SAN DIEGO  
NATURAL HISTORY  
MUSEUM  
Balboa Park

### The Cerutti Mastodon Discovery *on view now*

**A**N ICE AGE SITE excavated by Museum staff preserves 130,000-year-old mastodon bones, molars, and tusks that show evidence of modification by early humans, dramatically revising the timeline for when humans first reached the Americas. [Read more about it in \*The Pegmatite\*, September 2017 bulletin >>](#)



Discoverer of the eponymous mastodon, retired paleontologist Richard Cerutti (left) and Curator of Paleontology and Director of PaleoServices Dr. Tom Deméré (right) hold one of the mastodon fossil tusks. Photo: Kate Johnson, San Diego Natural History Museum.





## JUNIOR DIVISION

Coordinated by  
Dave Smith

**T**HE SUMMER ALWAYS SEEMS to come and go quickly. This summer, the **Juniors** participated in the **San Diego County Fair** by entering an educational display case of cabochons provided by **Christina and Angelina Kwan, Kiele Sageth, Gwen Swek, Kensington McGeehan, Justin Nygyen, Brayden Pape, Donovan Maes, and Ellie Martinez.**

The **Juniors** who volunteered for two full days of **San Diego Fair** sandbox coverage were **Kensington McGeehan, Rowan Ables, Brayden Pape, Donovan Maes, Christina and Angelina Kwan.** New students were inspired to apply for membership, in part due to having visited the student case at the **Fair** and also by word of mouth from current students to their friends.

During the six weeks of the **Fair**, our able assistant, **Paul Williams**, was demonstrating sphere making each Saturday, and I asked **Elbert McCune** to assist, and he kindly obliged to help.

The Juniors display case exhibited the cabochons produced by SDMG's youngest members during the Saturday classes. Shown at right: (upper deck) The work of Donovan Maes, age 9; (lower deck) Brayden Pape, age 11; and below, from left to right, Ellie Martinez, age 12; Owen Shek, age 10; Kiele Sageth, age 14; and Justin Nguyen, age 9.



The San Diego Mineral & Gem Society  
Junior Division shows off its talent  
at the San Diego County Fair



## How some Juniors spent their summer vacation

July and August were active months for the **Junior Division**, with an average class attendance of 11 students in July and 12 students in August (14 on August 18th). During several break times, **Aaron Lui** (1st medal recipient of the Science Olympiad) provided educational insights of various minerals for the class. **Gage Stieckle's** grandfather gave an interesting talk on their recent trip of fossil digging in Wyoming, near Yellowstone National Park. Fossil samples were handed out to each student to everyone's delight.

I look forward to more productive classes and a break from the heat this Fall.

The Juniors at work making cabochons in the summer Saturday class. Shown at right: (top) Meomi and Donovan; (middle) Gwen and Kensington; (bottom) DeAndre.

Below: Instructor Elbert McCune.

Photos: Dave Smith.





## MINI MINERS MONTHLY A MONTHLY PUBLICATION FOR YOUNG MINERAL COLLECTORS

**AUGUST 2018 (vol 10 no 8)**

- **There Are Tons of Diamonds Down There!\***
- **What Mineral Am I?\***
- **Mineral of the Month: Corundum\***
- Eureka! What Mineral Am I?
- Find The Mistakes (– in a story about a visit to the Smithsonian National Museum of Natural History)
- Careers for Mineral Collectors
- Feature: Darryl Powell talks about the teacher who got him interested in rocks and minerals.
- Growing Crystals At Home
- Where in the World? – Minerals Named for Places.
- Mineral Museums
- What you should do when you go to a mineral museum.
- Minerals on the Moon (word search game).

**\* Available for download from the SDMG website courtesy of  
Diamond Dan Publications:**

[www.sdmg.org/mmm/Mini\\_Miners\\_Monthly\\_2018\\_v10n8\\_pp1-2.pdf](http://www.sdmg.org/mmm/Mini_Miners_Monthly_2018_v10n8_pp1-2.pdf)

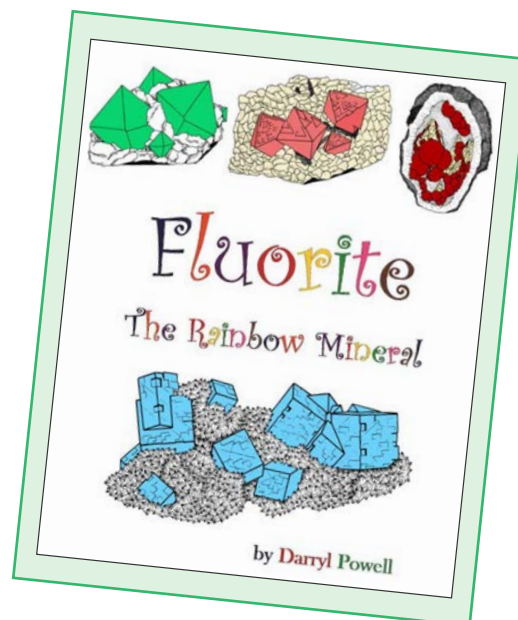
or <https://goo.gl/5m7mQi> (short URL)

Visit the publisher's website at:

[www.diamonddanpublications.net](http://www.diamonddanpublications.net)

New book from  
Diamond Dan Publications –  
Fluorite, by Darryl Powell

To place your order, contact:  
[powellpublicationsgroup@gmail.com](mailto:powellpublicationsgroup@gmail.com)  
or call 585-278-3047



## SCHOOL NEWS

September 2018

by Wayne Moorhead

[school@sdmg.org](mailto:school@sdmg.org)

### **Information for Students**

Classes will be closed for the Labor Day holiday from Sept 1 – 9. Fall classes will begin the week of September 10.

**SDMG Membership is required to take classes**, and you can join or renew on-line at:

[www.sdmg.org/sdmg-membership](http://www.sdmg.org/sdmg-membership)

**Beginning Cabochon Class is a prerequisite** for all other shop classes. It will be offered Wednesday Mornings 9:00–11:30am, or Wednesday Evenings 6:00–9:00 pm, or Thursday Evenings 7:00–9:00pm, starting on Sept. 12 or 13.

**September cab classes are nearly full**, so additional students may be wait-listed to begin in October or November.

**How to enroll in a cab class.** Members should eMail [school@sdmg.org](mailto:school@sdmg.org) with your request to join a cab class. State the day and time you prefer.

**About cab classes.** Cabochon classes are on-going with new students joining the classes as space permits. We limit class size to the first 12 people to arrive for that day's class, including those who have paid ahead for the class (recommended). New students work alongside experienced ones, and everyone shares their knowledge and learns together.

We want new students to attend at least four consecutive weeks with the same instructor to get the most out of the lessons. At a minimum, you will need to complete several well-shaped and polished cabs, including a ring-size one, before you start a beginning metals fabrication class.

**Dress and safety.** When you come to class, wear work clothes or bring an apron, no open-toe shoes or sandals, tie back long hair, and safety glasses are mandatory. Hearing protection is recommended in cab classes.

More information about our classes, and the class schedule can be found on our website.

Welcome back everyone, and enjoy class.

### **Class Closure Schedule 2018**

Closure date	Description
Sat, Sept. 1 – Sun, Sept. 9	Labor Day shutdown, one week.
Mon, Sept. 10	Fall classes begin.
Thu, Nov. 22 – Sun, Nov. 25	Thanksgiving shutdown, four days. Reopens Mon, Nov. 26.
Mon, Dec. 17, 2018 – Mon, Jan. 1, 2019	Christmas and New Year's shutdown, two weeks.
Tue, Jan. 2, 2019	Winter Classes begin.

### **Parking Lot closures 2018**

*Spanish Village*

#### **Attention Students and Instructors.**

Spanish Village will be closing the parking lot in back for special events on the dates listed below. The lot will be closed at 6:00AM Saturday morning and reopened at 6:00PM on Sunday evening. Please note that the lot will be closed at 6:00AM on Friday (not Saturday) on December 7th.

#### **Closed:**

**October 6, 7, 13, 14**

**November 10, 11**

**December 7, 8, 9**



## Cloisonné Enameling Beginner One-Day Workshop

September 16 and 23, 2018

9AM to 4PM

Instructor: Sheryl Haupt

In this beginner cloisonné enamel workshop, you will learn the basics of enameling on fine silver. You will create a beautiful cloisonné enamel from start to finish. You will learn how to prepare the silver, bend and shape the cloisonné wire, apply and fire transparent enamels and how to finish the piece to get it ready to put into a setting. No prior experience is necessary.



<b>Workshop Fee:</b>	\$70.00. Includes the SDMG class fee
<b>Pre-requisites:</b>	You must be a member of SDMG to attend.
<b>Class size:</b>	Limited to 8. The class on September 16th is nearly full, so don't delay in signing up, if you are interested in enrolling in the one-day workshop.
<b>Contact:</b>	Sheryl Haupt, <a href="mailto:sherylhaupt@verizon.net">sherylhaupt@verizon.net</a> or 951-522-2230.

## Casting Class

**Mondays, 1:30 to 7:00PM**

*Instructor: Rocio Bergum*

Students learn wax carving of models, investing/burn-out, spin-casting, mold making and finishing of pieces. SDMG membership is required to take classes.



Rocio Bergum used Balboa Park as inspiration for her cast silver pendant.



## SDMG Membership...

New Applications & Renewals  
for 2018–19 Due NOW

Don't forget to send in your membership renewal form by the deadline. **SDMG** classes are open to members only, so don't put it off any longer! There are now two ways to apply for or renew your membership –

1.) Send a check with your membership form to the membership secretary. The renewal form can be found at the end of this bulletin or on the

**SDMG** website at:

[www.sdmg.org/sdmg-public/pdf/sdmg-membership-app-and-renewal.pdf](http://www.sdmg.org/sdmg-public/pdf/sdmg-membership-app-and-renewal.pdf)

**OR**

2.) Sign up online using major credit cards via PayPal. Visit the SDMG website for details at:

[www.sdmg.org/sdmg-membership/](http://www.sdmg.org/sdmg-membership/)

**Pay with mailed check:** \$30 – first Adult Member

**OR – Pay using PayPal:** \$32 – first Adult Member

\$10 – Associate Adult Member at same household

\$10 – Junior Member

\$10 – printed/mailed copy of *The Pegmatite* bulletin

**Subscribe yourself to the eNewsletter at:**  
<https://goo.gl/KZqPsc>

published from September thru June  
at the same time as *The Pegmatite* bulletin (PDF online version)

**Members, you must subscribe yourself,  
we cannot do it for you!**

## This 'n' That...

General Announcements

Fall Classes 2018

The Fall session starts Monday, September 10. Juniors' classes will begin Saturday, September 15.

**SDMG September Board Meeting**

Monday, September 17, 2018

7pm, SDMG bldg.

**Membership Renewals for 2018–19**

Due NOW

Don't forget to send in your membership renewal form. **SDMG** classes are open to members only, so the time to get your application or renewal submitted is NOW! (The renewal form can be found at the end of this bulletin.)

## SDMG-GSSD Library

SDMG Bldg.

Donna Beers

**Hours:**

Wednesdays, 3 to 6pm

First Monday of the month during GSSD mtg

Third Monday of the month, 6–7pm

Tuesdays, by appt only

*Reference use only, no lending.*

**Access the catalog online at:**

<https://cloud.collectorz.com/sdmgmerklib/books>

**Who may use the Library?**

Membership is not required to view the catalog, but only **SDMG or GSSD** members may come use the reference library.

**We Need Volunteer Assistant Librarians.**

Members willing to volunteer in the Library will enable us to extend the hours of access.

**If you can help out, contact Donna:**

[librarian@sdmg.org](mailto:librarian@sdmg.org)

## GEMOLOGICAL SOCIETY of SAN DIEGO



GSSD General Meeting  
Monday, October 1, 2018  
7:00pm SDMG Building

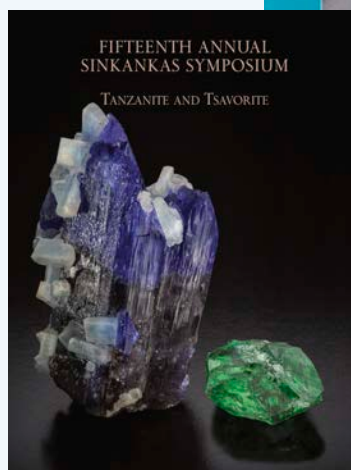
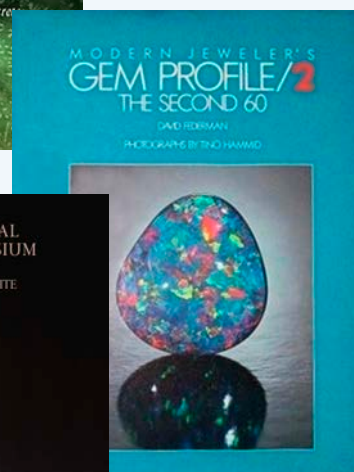
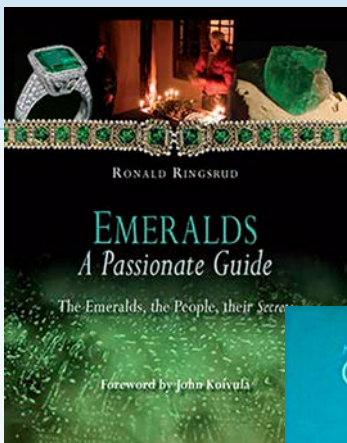
**T**HE SPEAKER FOR THE FIRST FALL meeting in October **TBD**.

You can find more information on **GSSD** and join the **GSSD** mailing list at: <http://www.gssd.rocks>.

### Report by Donna Beers

Two new exciting publications have been added to the **Roger Merk Collection** of the **Sinkankas Library**, which is located in the **SDMG** building. The first volume is ***Emeralds A Passionate Guide***, by **Ronald Ringsrud**. It is a fascinating read. It includes not only scientific information on emeralds, how they are cut, and the geology of emerald mines, but also secrets of how emeralds are traded and stories of wars that were fought to get them to market. The second book is ***Modern Jeweler's Gem Profile/2: The Second 60***, by **David Federman**. It is just a wow of a book featuring one-page stories of the beautiful full page gemstone pictured on the opposite page. The reviews from borrowers support my assessment of wow.

A third volume added to the library is the Proceedings of the ***Fifteenth Annual Sinkankas Symposium – Tanzanite and Tsavorite***. The pictures are glorious, and the information in this edition is the compilation of presentations given at the one-day symposium held in April 2018. The history of **Campbell Bridges's** discovery of Tsavorite 50 years ago, the storied Scorpion mine (Tsavorite), and the **Campbell** family is a highlight of this edition. **Campbell Bridges** was instrumental in bringing Tanzanite to the world market. He was the first person to have confirmed that the blue stones he obtained were indeed blue zoisite, which got the name Tanzanite. The science of Tsavorite and Tanzanite, including pictures of the stones and



mines, explanation of their geological formation, and pictures of their inclusions are some topics featured in this edition.

If you wish to come in and look at these books, remember that they are reference only books and must stay in the library. The **Sinkankas Library** is administered jointly by **SDMG** and **GSSD**. Access to the **SDMG** library is part of your **SDMG** membership; however, access to the **Merk collection** is not part of that membership. The **Gemological Society of San Diego** is the owner of the **Merk collection**, and it is requested that you join **GSSD** should you wish to use books in the **Merk collection**. Annual dues for membership in **GSSD** is \$15.00.

If you have any questions or would like a library appointment for Tuesday morning or early afternoon, please email [Donna@beers.nu](mailto:Donna@beers.nu).



### Fair Report

**H**OW SWEET IT IS! was the theme of the 2018 San Diego County Fair. It was ideal inspiration for showcasing Nature's own candy-colored gems in the displays of lapidary and faceted stones, as well as providing a healthy dollop of creative confection in the jewelry design displays. This year, about 140 of 365 competitive entries were submitted by **San Diego Mineral & Gem Society** members. Kudos to all the award winners, not least congrats to our members for doing your club proud!



The complete list of winning entries can be found on the SDMG website at:  
[www.sdmg.org/pdf/SDFair2018-GMJ-Results-Division.pdf](http://www.sdmg.org/pdf/SDFair2018-GMJ-Results-Division.pdf) (by class/division)

[www.sdmg.org/pdf/SDFair2018-GMJ-Results-Name.pdf](http://www.sdmg.org/pdf/SDFair2018-GMJ-Results-Name.pdf) (by name)

**SDMG** winners and pictures from the 2018 exhibition  
 at the **Gems, Minerals & Jewelry Dept.**  
 can be found on the **SDMG** website at:

[www.sdmg.org/pdf/SDFair2018-GMJ-SDMG.pdf](http://www.sdmg.org/pdf/SDFair2018-GMJ-SDMG.pdf)

**Congratulations to one and all!**

Attendance over 26 days was 1.561 million visitors – only a few thousand shy of last year, with the bar for the all-time high set in 2016 at 1.609 million attendees. In case you didn't know, the **San Diego County Fair** is the largest annual event in San Diego County, and one of the top five fairs in the United States and Canada.

There were cases filled with spheres, some of which fluoresce, many outstanding educational exhibits, the sweet desserts from the Rock Feast, a candycopia of faceted gemstones, petrified wood and geodes. The **Mineral of the Year** was **Fluorite**, the **Fossil of the Year** was **Leaves, Cones and Fruits**.

The Fair theme of **"How Sweet It Is"** had 13 jewelry entries, and there were 11 Southwest Jewelry entries, including five handmade bola ties. **SDMG's** resident centenarian instructor, **Elbert "Mac" McCune**, entered his very own favorite bola.

**Demonstrations varied daily.** They included faceting, chain-making, fossil preparation, wax carving, wire-wrapping, bead-stringing, and more. Free gem identification was provided by the **Gemological Society of San Diego (GSSD)**, and our knowledgeable staff provided daily docent tours of the exhibits, with kids making a beeline to sift for treasures in the sand pile.





Thanks to our Volunteers & Vendors!

**T**HE GEMS, MINERALS & JEWELRY DEPT. (GMJ) is always a top attraction at the Fair. **Coordinator Anne Schafer** orchestrated the efforts of a great team to put on a terrific exhibition that wowed visitors. Thanks to **Wayne Moorhead, Jennifer Stapp, and Peggy Leibitzke**, and the many volunteer docents and demonstrators. Thanks also to key **SDMG** volunteers who help with the logistics, including **Mike Harlow, Tim Bickford** and **Wayne Leibitzke**.

Every year, the **Vendors** draw lots of visitors looking for a memento from the Fair or a special item of jewelry, lapidary, or a gem, mineral or fossil – all at great prices. Their participation is much appreciated! Thanks to one and all for helping to make the 2018 Fair a sweet event.

## Fair Facetors

Lu Ann Benton

Dave Smith

Jamie Tollefson

Elbert McCune

Lee Bennett

Tim Sandiford

Bill Patterson

Robert Hanson

Tim Bickford

Mike Harkleroad

James Curtis

Marna Morimoto

## Thank you to our Fair Facetors

*by Bob Hancock*

**Demonstrators at the Fair:** The individuals listed above helped to make a significant difference in the success of the 2018 San Diego County Fair by volunteering their time and talents to demonstrate the art of faceting gemstones. Your enthusiasm and expertise in explaining the various steps and procedures to the public, helped to make the Fair visitor's experience most successful.



**Public Comment Period Open NOW  
for Southern Utah**

**BLM Management Plans**

**Comment Period Deadlines:  
November 15 and 30, 2018**

*by Andrew Hoekstra\* and Lisbet Thoresen*

**H**OBBY COLLECTING was banned in 1.86 million acres of Southern Utah in 1996 after **President Clinton** signed **Proclamation 6920** to create the **Grand Staircase Escalante National Monument (GSENM)**. In 2016, **President Obama** signed **Proclamation 9558** to create **Bears Ears National Monument (BENM)**, which encompassed about 1.35 million acres. Hobby collecting has not been banned in **Bears Ears** prior to a management plan being drafted. However, environmental groups opposed to the recreational activity are expected to lobby the **Bureau of Land Management (BLM)** to ban it when a final management plan is published.

In December 2017, **President Trump's Proclamations 9681 and 9682** downsized both Utah monuments – **Bears Ears** by about 85% to 202,000 acres and **Grand Staircase-Escalante** by about 47% to about 1 million acres.

*Would you like to have the opportunity to collect rocks, minerals, and petrified wood and common invertebrate fossils on some of the lands that did and could yet put hobby collecting off limits in Southern Utah?*

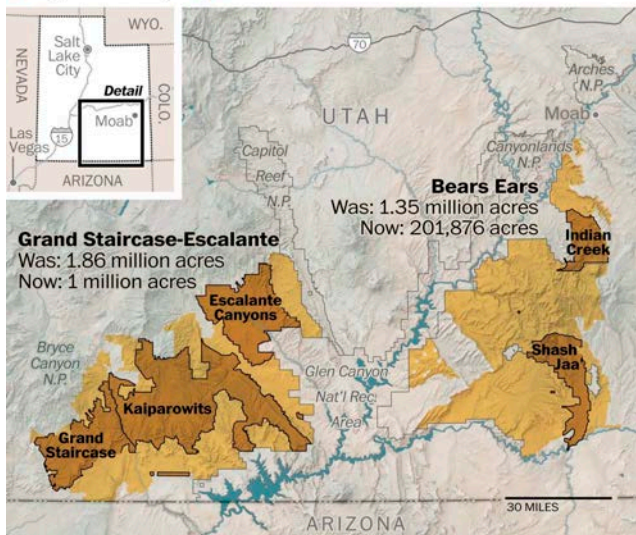
*Now is your chance to let the BLM know. The agency is considering restoring hobby collecting in some areas and wants your input.*

**GSENM and Kanab-Escalante Planning Area**

A November 30th deadline has been set for the public to submit comments on the **BLM's** proposed alternatives for the future management of the lands

**Changes to declared national monuments in Utah**

● Original boundary ● New delineation



Source: Department of Interior

excluded from **GSENM** – now called the **Kanab-Escalante Planning Area** – and in the management plan for the lands retained within the monument. Rockhounds encouraged by the rescissions should take note that lands removed from **Grand Staircase-Escalante** under **Presidential Proclamation 9682** will remain closed to hobby collecting until a new management plan is prepared – the excluded land has not reverted to its previous status.

For each management planning area, the **BLM** has prepared four alternative proposals. Public comments will influence the drafting of a final Resource Management Plan, which may include elements from any or all of the four proposals. Hobby rock collecting will be regulated in the same manner as hobby collecting of common invertebrate and botanical (petrified wood) fossils. Rockhounding will be allowed or prohibited in the same areas as described under the “Paleontological Resources” section of the plan alternatives (p. 3-44 in Draft RMP and EIS Vol. 1).

For the **Kanab-Escalante Planning Area**, the proposed alternative ‘D’, which is the **BLM's** Preferred Alternative, would allow hobby collecting of rocks,

Andrew Hoekstra is editor of *Delvings*, the Newsletter of the Delvers Gem & Mineral Society. He is also a member of the Southern California Paleontological Society and Paleontological Resources Specialist for the California Federation of Mineralogical Societies, Inc. (CFMS) Lisbet Thoresen is editor and public land representative for San Diego Mineral & Gem Society, Inc. and Chair, PLAC-South for CFMS. A slightly different version of this article appears in *Delvings*.

Cite this article: A. Hoekstra and L. Thoresen. Public Comment Period Open NOW for Southern Utah BLM Management Plans. The Pegmatite, bulletin of the San Diego Mineral & Gem Society, Inc. September 2018, pp. 12–13.



minerals, and common invertebrate and botanical fossils, including petrified wood, within almost the entire area excluded from the original **Grand Staircase-Escalante** monument. Alternative D also proposes to allow hobby collecting in two designated areas within **GSENM**.

### *Recommendation*

Rockhounds are encouraged to support alternative 'D' regarding the Paleontological Resources provisions. (It is not necessary to support alternative D in its entirety or overall, but the Paleontological provision is important for rockhounds).

### *BENM and*

#### *lands excluded by the monument rescission*

To date, rockhounding has not been banned in lands excluded from the **Bears Ears** monument. Currently, a new management plan is not being proposed for the excluded area. For lands remaining inside the **BENM**, **BLM** has opened a public comment period on the draft alternative management plans now under consideration, with the deadline set for November 15, 2018.

Only the proposed alternative 'A' – the "No Change" alternative – would allow rockhounding in the monument. Rockhounds may want to comment on the Paleontological Resources provisions of the **BENM** proposals.

### *Policy and practice under the law*

The **BLM** field offices in Southern California regard hobby collecting as a low-impact recreational activity and tend to be more accommodating of it than many of their **BLM** counterparts in other parts of the US. Elsewhere, including in Utah, the **BLM** exercises discretion to prohibit hobby collecting; although, existing federal statute allows for accommodation.

In 2009, the **Paleontological Resources Act (PRPA)** was enacted by Congress. This landmark legislation enables designation of **BLM** lands appropriate for hobby collecting. No other law exists that bans rockhounding within national monuments administered by the **BLM**. So, concerning public lands that are supposed to be managed to accommodate multiple uses, whether inside or outside a national monument, it is not legally mandated to prohibit all hobby collecting of rocks or common fossils to protect

### **GSENM and Kanab-Escalante Planning Area**

**Comment period now open**

**Deadline: Nov 30, 2018**

**Submit comments via:**

- **Mail:** 669 S Hwy 89  
Kanab, UT 84741  
Attn: Matt Betenson
- **ePlanning:** <https://goo.gl/EHvhbc>

### **BENM**

**Comment period now open**

**Deadline: Nov 15, 2018**

**Submit comments via:**

- **Mail:** BLM, Canyon Country District Office  
82 East Dogwood  
Moab, Utah 84532  
Attn: Lance Porter
- **eMail:** [blm\\_ut\\_monticello\\_monuments@blm.gov](mailto:blm_ut_monticello_monuments@blm.gov)

**In your comment for either the GSENM or BENM, be sure to include a reference to a specific page or section of the Draft EIS/Draft RMP.**

**Want to sign onto a joint comment letter?**

**Join SDMG's mailing list at:**

<https://goo.gl/KZqPsc>

*select the "Utah public lands" list*

**OR email: [ajhoekstra@yahoo.com](mailto:ajhoekstra@yahoo.com)**

*Be sure to provide:*

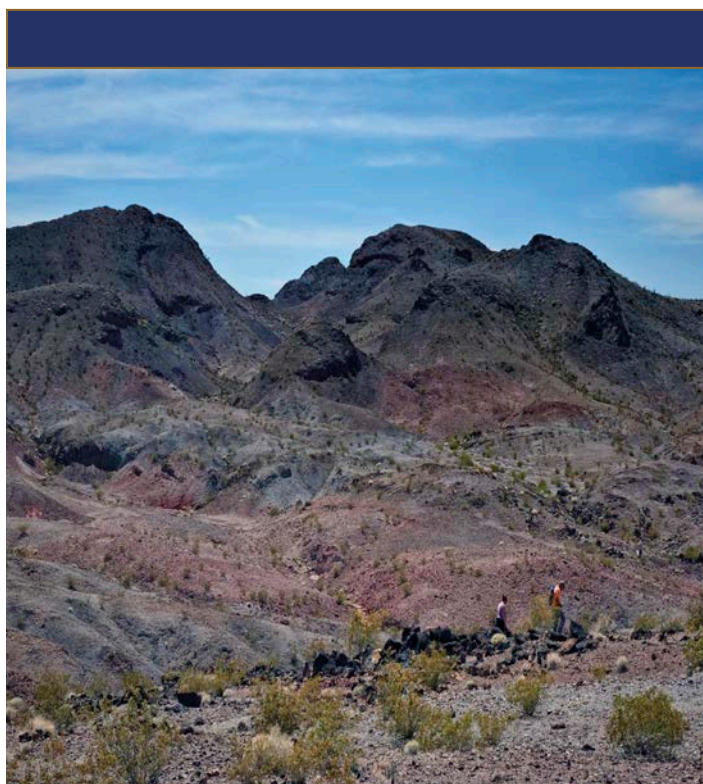
*first and last name, city, state*

*if you're a member or officer of a club, list the club,  
city and your role (title)*

scientifically significant finds, notably fossils finds, i.e., dinosaur bones. In fact, it is well to remind the **BLM**, that it may be detrimental as a preservation measure, because rocks and common fossils left *in situ* near the earth's surface often weather out and are irretrievably lost.

It is long overdue for multiple-use management plans to incorporate accommodation of hobby collecting, not least for the recreational and educational values thousands of enthusiasts enjoy. Hobbyists have experienced an alarming loss of access to collecting areas throughout the US in recent decades. They now need to seize the opportunity to reverse the trend.





<b>Time/Date:</b>	Noon. Thursday, September 20, 2018.
<b>Venue:</b>	Hi-Desert Museum, Yucca Valley
<b>Location:</b>	Yucca Valley Community Center Complex just off Highway 62, on Dumosa Avenue between Sage and Highway 247 (Old Woman Springs Road).
<b>Admission:</b>	\$5.00. Free for members.
<b>Website:</b>	<a href="http://hidesertnaturemuseum.org/?p=5179">http://hidesertnaturemuseum.org/?p=5179</a>

***Hi-Desert Nature Museum***  
***Brown bag lunch lecture series:***  
***Preserving Habitat for Rockhounds***  
***in the Mojave Desert***

Thursday, September 20, 2018  
noon to 1PM

presented by Lisbet Thoresen  
SDMG Public Lands Representative  
and CFMS PLAC–South Chair

THE MOJAVE DESERT attracts millions of visitors every year. Its geological features are unique in the world, with the symmetrical volcanic cinder cones, lava flows, and lava tubes of Pisgah and Amboy craters among the best representations of their kind. The Mojave Desert is also world-renowned for the quality and variety of materials found there – feldspar crystals, fluorites, geodes, obsidian, opalites, petrified reeds and palm root, and quartz varieties, including beautifully colored and patterned agates and jaspers.

This presentation showcases some of the Mojave's collectable minerals and historical desert localities where they are found. An overview is also presented on the changing landscape of land use policy that increasingly threatens to curtail access and accommodation of rockhounding and other low-impact recreational activities.

The public is welcome to attend the lunchtime Brown Bag Lecture Series at the Hi-Desert Museum – bring your lunch, bring yourself, and bring a friend. Beverages will be provided by the museum.

*Pictured above: Rockhounds spend a Saturday morning trekking through an area in the North Cady Mountains well-known for fine specimens of the mineral fluorite. Photo: L. Thoresen.*

## ON THE GO ... TO A SHOW



### SEPTEMBER .....

#### 7–15 **DENVER, CO – Colorado Mineral & Fossil Fall Show 2018**

**Sponsor:** Rocky Mountain Gem and Mineral CO-OP

**Where:** Crowne Plaza Denver Airport/Convention Center (formerly Ramada Plaza Hotel)

15500 E 40th Ave, Denver, CO 80239

**Hours:** 10:00am–6:00pm daily, except Sat, 9/15, 10:00am–4:00pm

**Admission and parking:** Free admission and parking. Free shuttle bus between hotel and airport.

**Web:** [www.ColoradoMineralandFossilShows.com](http://www.ColoradoMineralandFossilShows.com)

Affordable prices for mineral collectors looking for that special mineral, and affordable prices for the beginners who are just starting to collect.

Over 30 Wholesale Dealers From almost every country, top mineral and fossil dealers from around the world offering minerals and fossils for all budgets, over 20 meteorite and moldavite dealers, supplies, home decorating with Natures Art! Guest lecture series on September 10th.

*(Rocky Mountain Gems and Minerals bought the Colorado Mineral and Fossil Show from the Marty Zinn Expo.)*

#### 8–16 **DENVER, CO – Denver Coliseum Mineral, Fossil, Gem & Jewelry Show**

**Where:** Denver Coliseum and NWC  
4600 Humboldt St., Denver, CO 80216  
National Western Complex

4655 Humboldt St, Denver, 80216

**Hours:** 10:00am–6:00pm daily

**Admission and Parking:** Free.

**Website:** [www.ColiseumShow.com](http://www.ColiseumShow.com)

The Coliseum venue now includes the adjacent National Western Complex ('NWC'). 400-500 dealers at five shows where everyone can buy fine mineral specimens, fossils, dinosaurs, gems, gemstones, lapidary, cabochons, artisan and antique jewelry, beads, crystals, meteorites,

## JOHN E. GARSOW gems & minerals

**September 7 – 15**

**Colorado Mineral & Fossil Fall Show**

Crowne Plaza  
Denver Airport/Convention Center  
15500 E 40th Ave.  
Denver, CO 80239

**October 14**

**Fallbrook Gem & Mineral Society's  
2017 Fall Festival**

123 West Alvarado St.  
Fallbrook, CA 92028

**Facet Rough • Cabbing Rough  
Jewelry • Mineral Specimens**

[www.johngarsow.com](http://www.johngarsow.com)

metaphysical, gold, silver, turquoise, Native American items, interior decor, metal art, miner's rough, tools, supplies, and more.

**Coliseum Show:** Both levels of the Denver Coliseum + tents – fossils, minerals, gems & jewelry

**Stadium Show:** Stadium + Level 1 of the NWC + courtyard tents – larger dealers in A/C comfort

**Denver Expo Gem Show:** Level 2 of the NWC – primarily large volume wholesale

**Denver Mineral Show:** Level 3 of the NWC – a quiet intimate space limited to better minerals, fossils and gems

**Miner's Co-Op Show:** ground level of the NWC – direct from the friendly miner/pro prospector



**14–16 DENVER, CO – The Original Denver Gem & Mineral Show – Minerals of Mexico**

**Where:** Denver Mart Expo Hall

451 E. 58th Ave., Denver, CO 80216 (I-25 at Exit 215)

**Hours:** Fri 9:00am – 6:00pm, Sat 10:00am – 6:00pm, Sun 10:00am – 5:00pm

**Admission (one-day pass):** Adults \$7.00, Teens (13–19) and Seniors (65+) \$4.00, Kids 13 and under (accompanied by an adult) Free. (See website for 3-day pass rates.)

**Website:** [www.denvermineralshow.com](http://www.denvermineralshow.com)

More than 150 mineral, gem, fossil, book, and jewelry dealers. Nearly 100 competitive and non-competitive exhibits featuring the latest mineral and fossil finds from around the world, as well as world-class specimens of the show theme – Minerals from Mexico. Speakers every day, public sector booths, gold panning, \$5,000 Gold Giveaway, Mr. Bones Walkabout, mineral identification, fluorescent display, exhibits, club demos.

**14 CHICO, CA**

**79th CFMS Convention Vendor and CFMS Guest Dinner**

**Time:** 3:30pm (pre-registration required)

**15–16 CHICO, CA**

**79th CFMS Convention and FRLMS Annual Show**

**Sponsor:** Feather River Lapidary & Mineral Society

**Where:** Silver Dollar Fair Grounds  
2357 Fair St., Chico, CA 95928

**Hours:** Sat 9:30am – 5pm; Sun, 9:30am – 4pm

**Admission:** Adults \$4, under 16 Free.

**Contact:** John Scott, 530-321-6331

or [jweazel@sbcglobal.net](mailto:jweazel@sbcglobal.net)

**Web:** [featherriverrocks.org](http://featherriverrocks.org)

**CFMS flyer:** [www.cfmsinc.org/shows/ShowForms/2018FeatherRiverShowPoster.pdf](http://www.cfmsinc.org/shows/ShowForms/2018FeatherRiverShowPoster.pdf)

Jade, opal, rough rock, crystals, fossils, minerals, jewelry, and beads, demonstrations in wire wrapping, jewelry making, rock carving and painting, and geode cutting, display cases, kids'



wheel of fortune, treasure hunt, grab bags, fossilized shark tooth necklace for the first 250 kids both days.

**OCTOBER .....**

**3–7 JOSHUA TREE, CA – 43rd Annual Gem & Mineral Show**

**Sponsor:** Hi-Desert Rockhounds/Morongo Basin Sportsman's Club of Joshua Tree

**Where:** Sportsman's Club  
6225 Sunburst Street, Joshua Tree, CA 92252

**Hours:** opens daily at 9:00am

**Admission and parking:** Free.

**Contact:** 760-366-2915

or [jtsportsmans@ymail.com](mailto:jtsportsmans@ymail.com)

**Website:** [jtsportsmansclub.com/gem.html](http://jtsportsmansclub.com/gem.html)

or flyer at:

[www.jtsportsmansclub.com/ShowFlyerFall2018.pdf](http://www.jtsportsmansclub.com/ShowFlyerFall2018.pdf)

Over 60 Dealers featuring rocks, minerals, fossils, gemstones, jewelry, beads, lapidary supplies and items, mining equipment, gemstone rough, findings, geodes, slabs, meteorites, crystals, carvings, jewelry boxes, New Age items, gifts, collectibles, books, tools and more! Free rock and mineral identification, free rocks for Kids, learn techniques of gold panning on Saturday.



## 25th Annual Big Sur Jade Festival

October 5–7, 2018

**The biggest show of its kind  
in North America**

Vendor Art

FREE Lectures *and* FREE demonstrations

Fine Food *and* 3 days of live entertainment

The Big Sur Jade Festival features jade and other lapidary arts by artists from all across the USA, Canada, and New Zealand. It is one of the largest lapidary shows of its type in the world.

**Location:** Pacific Valley School  
69325 Highway 1  
Big Sur, CA 93920-9612  
(across from Sanddollar Beach)

**Hours:** Fri noon – 6:00pm  
Sat 10:00am – 6:00pm  
Sun 10:00am – 5:00pm

**Admission &  
Parking:** Free.

**Vendor Info:** [vendors@bigsurjadefestival.com](mailto:vendors@bigsurjadefestival.com)

**Website:** [www.bigsurjadefest.com](http://www.bigsurjadefest.com)



## Vista Gem & Mineral Society 2018 Show

October 5 – 7, 2018

Antique Gas & Steam Engine Museum

2040 N. Santa Fe Ave.

Vista, CA 92083

Parking: \$5.00

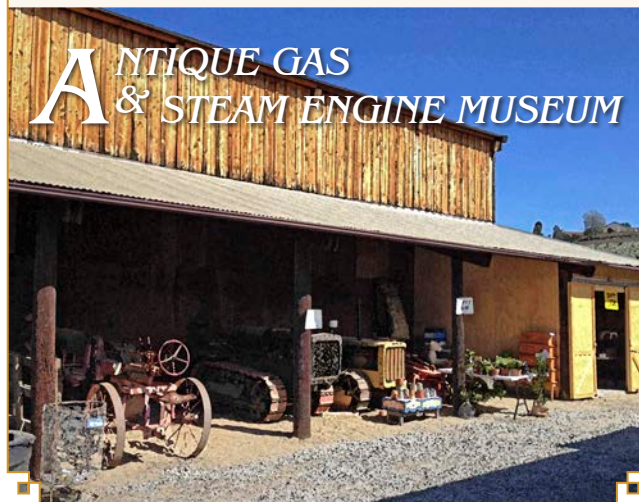
Admission: Free

Friday & Saturday 10AM to 5PM

Sunday 10AM to 4PM

***Fabulous vendors  
in a fabulous rustic setting***

If you've never been to a VGMS show at the  
Antique Gas & Steam Engine Museum,  
you've gotta see it – it's a hidden treasure!



## 6 BORON, CA – Mojave Mineralogical Society Annual Show

**Where:** Boron Recreation Park

26998 John St., Boron, CA 93516

**Hours:** Sat 9:00am – 5:00pm, Sun 9:00am – 4:00pm

**Admission:** Free

**Contact:** Bruce Davies 760-338-8829

or [daviesb@yahoo.com](mailto:daviesb@yahoo.com)

**Web:** [www.facebook.com/groups/  
MojaveMineralogicalSociety](http://www.facebook.com/groups/MojaveMineralogicalSociety)

14 **FALLBROOK, CA – Fall Festival of Gems**

**Sponsor:** Fallbrook Gem & Mineral Society

**Where:** Fallbrook Gem & Mineral Facility  
123 West Alvarado St., Fallbrook, CA 92028

**Hours:** 9:00am – 4:00pm

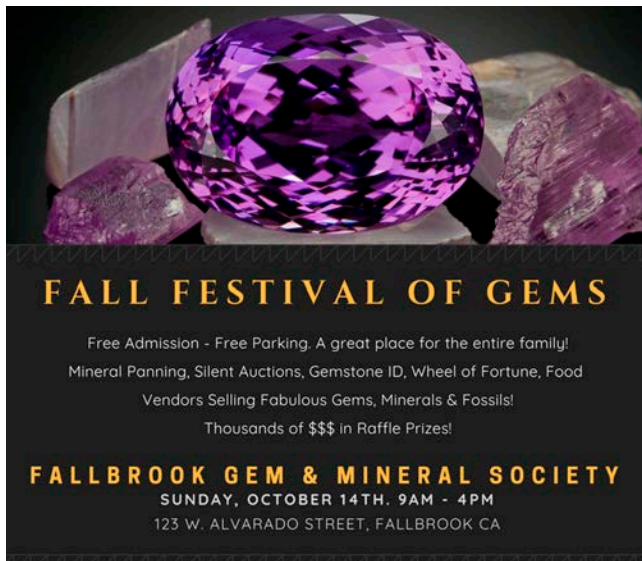
**Admission and Parking:** Free.

**Contact:** Janice Bricker, 760-728-1130

or [fgms@sbcglobal.net](mailto:fgms@sbcglobal.net)

**Web:** [www.facebook.com/](http://www.facebook.com/FallbrookGemandMineralSociety/)

[FallbrookGemandMineralSociety/](http://www.facebook.com/FallbrookGemandMineralSociety/)



13–14 **TRONA, CA – Searles Lake Gem & Mineral Society 77th Gem-O-Rama 2018**

**Where:** SLG&MS Lapidary and Show Bldg  
13337 Main St. (corner of Main and Trona Rd.)

**Hours:** Sat 7:30am – 5:00pm, Sun 7:30am – 4:00pm

**Admission and Parking:** Free.

**Contact:** Jim or Bonnie Fairchild 760-372-5356

or [slgms@iwvisp.com](mailto:slgms@iwvisp.com)

**Web:** <http://goo.gl/sVGrBJ> (short url)

Purchase Searles Lake pink halite, 20 dealers, 50 exhibits, geode cutting and sales, demonstrations, games, gem dig, grand prize drawing, hourly door prizes, snacks and drinks, pancake breakfast both days, prizes, Old Guest House Museum, Trona's History House and Field Trips both days.

20–21 **WHITTIER, CA – WGMS 69th Annual Treasures of Rockhounding Show**

**Sponsor:** Whittier Gem & Mineral Society

**Where:** Whittier Community Center  
7630 Washington Ave, Whittier, CA 90602

**Hours:** 10am – 5pm daily

**Admission and Parking:** Free.

**Contact:** Frank Winn, 626-239-5457 or

[RkhndFW@gmail.com](mailto:RkhndFW@gmail.com)

**Web:** [www.wgmsca.com](http://www.wgmsca.com)

Displays of collections, vendors, lapidary and jewelry demos, educational children's activities, snack bar, silent auction, raffle with hourly drawings and more.

27–28 **LANCASTER, CA**

**Sponsor:** Palmdale Gem & Mineral Club

**Where:** Palmdale Elks Lodge  
2705 E Avenue Q, Palmdale, CA 93550

**Hours:** 10am – 5pm daily

**Contact:** Don McClung, (661) 860-4910 or

[bigd\\_mcc@aol.com](mailto:bigd_mcc@aol.com)

**SDMG's  
Gem Diego Show  
cancelled in 2018**

*New Venue TBD for 2019*

We lost Al Bahr Shrine as our show venue, so we're looking for a new home in the San Diego area.



If you have a lead on a new venue for the first weekend in November (Fri, Sat, Sun, 1–3) 2019, please contact SDMG President Jim Parrish at [sdmgpresident@sdmg.org](mailto:sdmgpresident@sdmg.org)



Please be courteous and call the field trip leader to ask if you may participate in the field trip. Be sure to call again if you decide to cancel, so folks aren't waiting around for you. All CFMS affiliate clubs will ask you to sign a waiver, and you must agree to abide by the AFMS Code of Ethics and listen to directions of the field trip leaders.

**Oct 6–7, 2018**

**Mining District, Hawthorne & Mina, NV**

**Sponsor:** CFMS / Roseville Rock Rollers Gem & Mineral Society

**Sign-up deadline:** Wednesday, October 3rd.

**Guests allowed.**

**Contact:** CFMS Field Trips North Chairman, Jim Barton, 916-847-7321, [geologistl@surewest.net](mailto:geologistl@surewest.net)

**Materials:** Microcline feldspar, copper minerals, black quartz crystals, epidote, epidote in quartz and calcite, cassiterite, grandradite and grossular garnet; possibly fossils and petrified wood. The goal of this trip is to locate and collect mineral specimens, not collection of Lapidary materials.

**Details:** [www.cfmsinc.org/fieldtrips/y2018/FT1018\\_CFMS\\_FTNorth\\_HawthorneNV.pdf](http://www.cfmsinc.org/fieldtrips/y2018/FT1018_CFMS_FTNorth_HawthorneNV.pdf)

**Oct 13–14, 2018**

**SLGMS 77th Gem-O-Rama 2018, Trona, CA**

Field trips with annual show sponsored by Searles Lake Gem & Mineral Society

**Materials:** Pink Halite, Hanksite and other salt minerals.

**More info:** <http://goo.gl/sVGrBJ> (short url)

~ Fee field trips, drive your own car ~

**Registration required, unless otherwise specified below**

Register at show, cash or check only: 7:30–9:00am and 1:30–2:30pm

**Searles Dry Lake**

2.5-hour trips on Saturday, 4.5-hour trip on Sunday - no reservations necessary.

**Mud Trip – \$15 per CAR**

Saturday Only, departs ONLY at 9am – Cluster and barrel hanksite, trona, borax

**Blow Hole – \$15 per CAR**

Saturday Only, departs ONLY at 2:30pm – Hanksite, halite, borax, sulfohalite - dry surface

**Pink Halite – \$20 per CAR**

Sunday Only, departs ONLY at 9am – In brine, beneath hard salt

**Pinnacles National Natural Landmark – FREE**

Self-guided, information at show

**Searles Valley Minerals Plants – FREE Tour by Bus**

Saturday only: 10:40am, 11:25am, 12:10pm, 12:55pm and 1:40 pm

**Oct 19–21, 2018**

**Clear Creek, CA, 2-days/3-nights camping trip**

**Sponsor:** Conejo Gem & Mineral Society

**Sign-up:** [www.whoscoming.com/vgms](http://www.whoscoming.com/vgms) (please remove your name if you signed up but decide not to participate after all.)

**Contact/field trip leader:** Chuck Borchard, [chuck.cgmctrips@gmail.com](mailto:chuck.cgmctrips@gmail.com)

**Materials:** Serpentine, Agate, Jadeite, Plasma Agate.



# West Coast Gem & Mineral Show

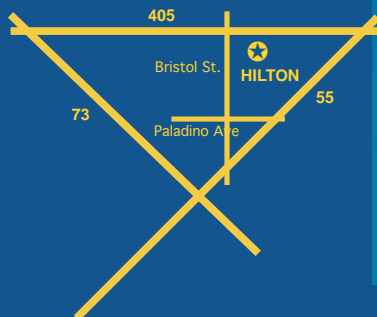
## November 9 - 11, 2018

### NEW LOCATION!

Hilton Orange County

3050 Bristol St., Costa Mesa, CA 92626

**FREE Admission**  
**Parking \$5/day**  
**OPEN to the Public**



Gold on Quartz  
Eagle's Nest Mine, Placer Co., CA  
Jeff Scovil©

**80 Select Retail & Wholesale Dealers\***  
**Minerals ♦ Fossils**  
**Gems ♦ Jewelry**  
**Lapidary ♦ Home Decor**  
**and much more!**

**\*Wholesale for qualified buyers**

See our website for directions

[www.MineralShowsLLD.com](http://www.MineralShowsLLD.com)



# KRISTALLE

Est. 1971

*Wayne and Dona Leicht*

WE ARE CASH BUYERS FOR SINGLE SPECIMENS AND ENTIRE COLLECTIONS!

875 North Pacific Coast Highway - Laguna Beach, CA 92651

949.494.5155 - fax: 949.494.0402

e-mail: [info@kristalle.com](mailto:info@kristalle.com)





## San Diego Mineral & Gem Society, Inc.

A Non-Profit Educational and Scientific Organization

### Membership Information:

Interested in minerals, fossils, lapidary, gems,  
or handcrafted jewelry? We are, too!

- 1.) Send a check with your membership form to the  
membership secretary (details below).

OR

- 2.) Sign up online using major credit cards via PayPal.

Visit the SDMG website at:

[www.sdmg.org/sdmg-membership/](http://www.sdmg.org/sdmg-membership/)

.....

Pay with mailed check: \$30 – first Adult Member

OR – Pay using PayPal: \$32 – first Adult Member

\$10 – Associate Adult Member at same household

\$10 – Junior Member

\$10 – printed/mailed copy of *The Pegmatite* bulletin

.....

Membership application forms  
are available on-line at [www.sdmg.org](http://www.sdmg.org),

and at the Village Silversmiths Shop  
in the SDMG Building,

or by contacting the SDMG Membership Secretary

[membership@sdmg.org](mailto:membership@sdmg.org)

or by writing to her at:

San Diego Mineral & Gem Society

attn: Angela Cannon

P.O. Box 710783, Santee, CA 92072

Please allow up to 3 weeks for processing your application

MAKE CHECKS PAYABLE TO:

**San Diego Mineral and Gem**



## CLASSIFIED ADS

### OCEANVIEW MINE

#### TOUR & SCREENING TRIPS:

Sundays, 11:00am to 3:00pm

For more information  
please visit [www.digforgems.com](http://www.digforgems.com)

or call Jeff Swanger at 760-415-9143

Reservations required.

\$75. Adults \$60. Children (ages 5 to 11)

Family rates available.

### HIMALAYA MINE TAILINGS:

Thursday-Monday, 10:00 am to 3:00 pm.

At the Lake Henshaw Resort on Highway 76.

Adults, \$75 per day. Kids 12-15, half price.

Screening tables, buckets, and shovels provided.

Call (775) 830-5797

or (775) 772-7724 for more info

Website:

[www.highdesertgemsandminerals.com/](http://www.highdesertgemsandminerals.com/)

## WEBSITES

### SDMG:

[www.sdmg.org](http://www.sdmg.org)

### CFMS:

[www.cfmsinc.org](http://www.cfmsinc.org)

### AFMS:

[www.amfed.org](http://www.amfed.org)

### PUBLIC LANDS:

[www.amlands.org](http://www.amlands.org)

### BLM:

[www.ca.blm.gov](http://www.ca.blm.gov)

### BOB'S ROCK SHOP:

[www.rockhounds.com](http://www.rockhounds.com)

### ROCKHOUND FORUM:

[groups.yahoo.com/neo/groups/la-rocks/info](http://groups.yahoo.com/neo/groups/la-rocks/info)



## CLASS SCHEDULE – 2018

**REGISTRATION IS REQUIRED BEFORE ALL CLASSES.**

Email [school@sdmg.org](mailto:school@sdmg.org) for class availability before attending any class to find out when the class starts and ends, if special materials are required and whether you qualify to attend. Fee is \$5.00 per class; it is usually easier for instructors if payment is made for a full month; cash or checks only, please. **Classes are open to members only** and students must read and follow the **School Rules** available in the classroom and at:

<http://www.sdmg.org/class-schedule/school-rules.pdf>

<b>CABOCHONS</b>	Wed	9 – 11:30am	Jim Claypool
	Wed	6 – 9pm	Nita Sani
	Thu	7 – 9pm	Jon Evans
<b>FACETING</b>	Tue	noon – 3pm	Elbert McCune
	Tue	7 – 9pm	Jerod Schneider
	Wed	9am – noon	Bob Hancock
	Wed	noon – 3pm	Donna Beers
	Wed	7 – 9pm	Elbert McCune
	Thu	7 – 9pm	Bill Brisebois
<b>BEG. METALS FABRICATION</b>	Tue	9am – noon	Lois Lukasky
	Tue	noon – 3pm	Lois Lukasky
	Wed	6 – 9pm	Stephanie Griffin
	Thu	9am – noon	Denny Turner
	Thu	1 – 4pm	Denny Turner
	Sun	5 – 8pm	Dee Smith
<b>ADV. METALS FABRICATION</b>	Tue	7 – 9pm	Al Puente
	Wed	9am – 3pm	Denny Turner
	Wed	9am – 3pm	Jackie Leverone
	Thu	7 – 9pm	Ellen Riceman
	Fri	9:30am – noon	Dee Smith
	Fri	12:30 – 3:00pm	Dee Smith
	Sat	4 – 7pm	Stephanie Griffin
<b>CASTING</b>	Mon	1:30 – 7:00pm	Rocio Bergum
	Tue	9am – 2pm	Dave Smith
	Fri	5 – 7pm	Rich Yarbrough
<b>STONE SETTING</b>	Mon	by appointment	Miguel Asmar
<b>ROCK CARVING</b>	Mon	9am – 1pm	Jan Kunsu
<b>SPHERE MAKING</b>	Sat	1 – 3:30pm	Paul Williams
<b>JUNIORS</b>	Sat	10am – 1pm	Dave Smith
<b>DESCRIPTIVE MINERALOGY</b>	Wed	6:30 – 9pm	Doug Peeler

# **Thomas M. Schneider Quality Gemstones**



**861 6th Avenue, Suite 517**


**San Diego, CA 92101**

**[www.tmsgems.com](http://www.tmsgems.com)**

**Ph: 619-232-2624**

**Fax: 619-232-2213**

ELEVENTH ANNUAL  
SINKANKAS SYMPOSIUM  
RUBY




April 6, 2013 - Carlsbad, California


TWELFTH ANNUAL  
SINKANKAS SYMPOSIUM  
PERIDOT  
& UNCOMMON GREEN GEM MINERALS




THIRTEENTH ANNUAL  
SINKANKAS SYMPOSIUM  
OPAL



FOURTEENTH ANNUAL  
SINKANKAS SYMPOSIUM  
SAPPHIRE



FIFTEENTH ANNUAL  
SINKANKAS SYMPOSIUM  
TANZANITE AND TSAVORITE



**THE ANNUAL SINKANKAS SYMPOSIUM**

[www.sinkankassymposium.net](http://www.sinkankassymposium.net)

“The best gem mineral symposium  
in North America.”  
– John Koivula

## AL'S OPAL IMPORTS & LAPIDARY

**3684 Fairmount Avenue  
San Diego, CA 92105  
619 282-1700**

Al Ramirez, proprietor  
*U.S. Navy WWII South Pacific veteran*

### Unmounted Australian and African Opals

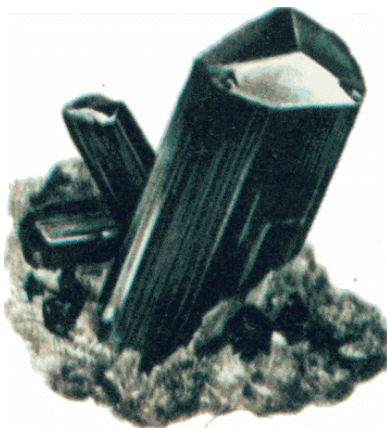
- Lapidary equipment new or used
- Tumblers, diamond blades, belts and grits
- Rough rock for faceting, slabbing or tumbling
  - Recycle your gold or silver jewelry into new designs or repair
- A variety of finished jewelry in silver or gold
  - Faceting gemstones

*All work done on premises  
Layaway Available*



**HOURS:**  
**Monday thru Friday**  
**8:30am to 3:30pm**  
**Saturday**  
**9:00am to 1:00pm**





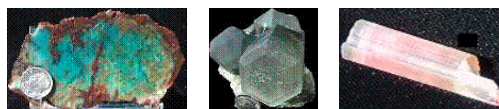
## MinersGallery.com

Rock Slabs, Bulk rock, Crystals, Jewelry,  
Fossils, Gems and Petrified Wood.

Phone: (619) 445-0800

[richard@minersgallery.com](mailto:richard@minersgallery.com)

[www.minersgallery.com](http://www.minersgallery.com)



Minerals and crystals from around the world

**\* ROCKS \* MINERALS \* GEMS \* JEWELRY MAKINGS \***

**\* LARGEST INVENTORY \***

**\* \* BEST QUALITY \* \***

**\* LOWEST PRICES \***

**\* NEW ARRIVALS DAILY \***

## **SOUTH AMERICAN IMPORTS**

**Direct Importers**

**2461 San Diego Ave. #104**

**San Diego, CA 92110**

**In Old Town, in Coyote Café Shopping Center**

**Tel: (619) 299-3877**

**OPEN EVERY DAY!**

# Village Silversmiths

**Bead Work  
Jewelry  
Slabs**

**1770 Village Place  
Balboa Park  
San Diego, CA 92010  
619 239-8812**

**Carvings  
Rocks  
Cabs**



**DIAMOND PACIFIC**  
**TOOL CORPORATION**  
2620 West Main St. Barstow CA 92311

Our business is putting fun and pride  
into your lapidary hobby or profession  
by making the right tools for your needs

Astounding Selection of Minerals  
& Fossils from Around the Globe  
**MINERS GEMS**



Experts in Geology, Gemology & Paleontology

World Famous Gold Rush  
Rock Shop & Mining Museum

Daily Mineral Panning and Geode Cutting

Educational Programs Available

In Old Town San Diego State Historic Park  
2616 San Diego Avenue, San Diego CA 92110  
619-688-1178

[minersgemsandminerals@cox.net](mailto:minersgemsandminerals@cox.net)  
[www.minersgemsandminerals.com](http://www.minersgemsandminerals.com)



## San Diego Mineral & Gem Society, Inc.

A Non-Profit Educational and Scientific Organization

1.) Make Check Payable to: **SDMG** 2.) Send Application + Check to:  
San Diego Mineral & Gem Society, Inc.  
attn: Angela Cannon  
P.O. Box 710783  
Santee, CA 92072

### MEMBERSHIP APPLICATION/RENEWAL

Check on the membership classification/s you are applying for (check as many as apply):

**Adult**      **Associate** (Adult in same household as primary Adult member)      **Junior** (Ages through 17)

Last Name: \_\_\_\_\_ First Name: \_\_\_\_\_

Associate Name: \_\_\_\_\_ (First and Last Name, if different from primary adult member)

Junior Name (1): \_\_\_\_\_ Junior Name (2): \_\_\_\_\_

Address: \_\_\_\_\_

City: \_\_\_\_\_ State: \_\_\_\_\_ Zip/Postal Code: \_\_\_\_\_ (+ 4 digit suffix)

Phone: \_\_\_\_\_ eMail: \_\_\_\_\_

I, the undersigned, hereby apply for membership in the San Diego Mineral and Gem Society, Inc. As a member, I will participate in SDMG activities and will help to promote knowledge of and interest in minerals, fossils, lapidary, and related subjects.

**SIGNED:** \_\_\_\_\_ **DATE:** \_\_\_\_\_

#### Membership dues for the period beginning July 1 and ending June 30. Dues Schedule:

**\$30 – annual dues for ADULT member**, anyone 18 or older.

**\$10 – annual dues for ADDITIONAL ADULT (Associate) member** at same address. Additional adult member will have the right to enroll in lapidary classes.

**\$10 – annual dues for JUNIOR member**, ages through 17. Entitles Junior member to enroll in Saturday Junior class and attend other Juniors' activities.

**Optional – ADD \$10/yr. for each mailing address for which you would like a printed bulletin mailed** via USPS.

**The Pegmatite**, SDMG's bulletin is published monthly September through June. To receive it, members should join our mailing list at: <https://goo.gl/KZqPsc> (short url). The **eNewsletter** goes out on or about the first of every month. It contains the link to the PDF version of **The Pegmatite** online. (Sign-up is a two-step process: you'll get a confirmation email from our bulk mail provider asking you to verify that you want to join **SDMG's** list – just click the link in the message body to complete the process. If you don't, you won't get our emails.)

In addition to adding your name to the newsletter list, you may also add your name to other topic-specific lists that interest you. From time to time, we send out time-sensitive notices or reminders about a forthcoming event or activity.

Your membership in **SDMG** continues to be the best deal in town, and we hope that you will agree. When you mail in your check, please note any corrections to your area code, address and include your zip+4 on your check. Please write "NO EMAIL" on your check, if you do not have an e-mail address.

You can fill in the form, then print it out, or you can print it out, fill in the form manually, and send it in with your check. Alternatively, you can bring your completed membership form and your annual dues to your first class (cash or check only).

If you need help with your renewal or have any additional questions, please contact the membership secretary via email at: [membership@sdmg.org](mailto:membership@sdmg.org).





# San Diego Mineral & Gem Society, Inc.

A Non-Profit Educational and Scientific Organization

1770 Village Place, Balboa Park

San Diego, CA 92101-1651

[www.sdmg.org](http://www.sdmg.org)

## WELCOME!

The SDMG Building  
is located  
at the north end of  
Spanish Village  
in Balboa Park

SDMG Museum hours:  
11:00am to 4:00pm

Get information  
on classes, events,  
field trips, reports,  
reviews, slideshows  
and more at:  
[www.sdmg.org](http://www.sdmg.org)

## ADDRESS SERVICE REQUESTED



## THE PEGMATITE – SEPTEMBER 2018

Sun	Mon	Tue	Wed	Thu	Fri	Sat
26	27	28	29	30	31	1
2	3 Labor Day No GSSD Mtg	4	5	6	7 Colorado Mineral & Fossil Show begin	8 Denver Coliseum Show begin
9	10	11	12	13	14	15
	SDMG Fall Classes start				51st Denver Gem & Mineral Show begin	First Junior Div Fall Class
16 Denver Shows end	17 SDMG Board Mtg 7pm, SDMG Bldg	18	19	20	21	22
23	24 SDMG General Mtg 7pm, SDMG Bldg	25	26	27	28	29
30						