



San Diego Mineral & Gem Society, Inc.  
A Non-Profit Educational and Scientific Organization

# THE PEGMATITE

## APRIL 2019

### SDMG's 58th ANNUAL BARBEQUE & SILENT AUCTION

**Saturday, May 4, 2019**

*Doug Peeler, Chair*

10:00am – 4:00pm, Balboa Park  
Lawn at SW corner of  
Park Blvd. & President's Way

*More Sellers' Tables than ever!*

*~ Bring your own lunch ~  
or buy tickets in advance  
for lunch catered by The Barbeque Pit*



*Join us for a day on the green*

*Read the details & where to buy tickets on page 7*

Official bulletin of the San Diego Mineral and Gem Society, Inc.

**Affiliations:** California Federation of Mineralogical Societies  
American Federation of Mineralogical Societies  
American Lands Access Association

**Sister Club:** Kingston Lapidary, Hull, England

**Publication:** *The Pegmatite* is published monthly (except July and August).

**Submission Deadline:** 3rd Tuesday of the month preceding next month's publication, unless otherwise indicated.

**Membership:** Anyone with an interest in minerals, fossils, lapidary, gems, or hand-crafted jewelry may join the Society.  
Contact: [membership@sdmg.org](mailto:membership@sdmg.org)

**Liability:** The San Diego Mineral & Gem Society, Inc., is not and cannot be held responsible and liable for personal injuries, for damage or loss of property at any meetings, field trips, classes, shows, or any event sponsored or recommended herein.

**Copyright:** ©2019 San Diego Mineral and Gem Society, Inc. Non-commercial reprint permission given, unless otherwise noted, provided proper credit is given.

**Street Address:** 1770 Village Place  
San Diego, CA 92101-1651

**Mailing Address:** P.O. Box 710783  
(membership apps) Santee, CA 92072  
attn: Angela Cannon

**Phone:** 619-239-8812

**Website:** [www.sdmg.org](http://www.sdmg.org)

**Editor:** Lisbet Thoresen, [editor@sdmg.org](mailto:editor@sdmg.org)

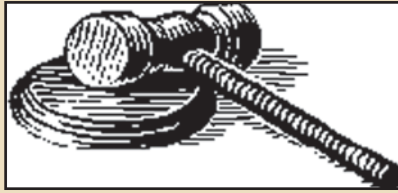
**Layout, Advertising:** [info@sdmg.org](mailto:info@sdmg.org)

**General Information:** [admin@sdmg.org](mailto:admin@sdmg.org)

**Change of Address:** [membership@sdmg.org](mailto:membership@sdmg.org)

**Exchange bulletins:** Send to the Society mailing address

The mission of the San Diego Mineral and Gem Society, Inc., is to disseminate knowledge of mineralogy and earth sciences; to encourage the study of these subjects; to conduct classes in mineralogy and lapidary arts; to conduct field trips for the collection and study of specimens; to encourage interest in mineralogy and lapidary arts among young people; and to procure and maintain a collection related to the earth sciences and lapidary arts.



## PRESIDENT'S MESSAGE

April 2019

by Jim Parrish

[sdmgpresident@sdmg.org](mailto:sdmgpresident@sdmg.org)

**I**N MARCH **SDMG** celebrated its **85th Birthday** at **Elijah's Restaurant** in San Diego. Seventy-seven attendees came together at our **Annual Banquet** to share a special evening. Banquet Chairperson **Jennifer Stapp** and Co-Chair **Melissa Ordway**, along with many helpers, did a terrific job decorating the banquet hall and making all the arrangements. Thank you to everyone who made this annual event a success.

This year's guest speaker was master gem carver **Meg Berry**. She was funny and entertaining as she guided us on a pictorial tour of her working process of "Gem Cutting." Her skill at making freeform carvings in precious stones is legendary. It was fascinating to see the master at work and listen to her commentary. Thank you, **Meg**, for sharing your knowledge with us and making it such an enjoyable experience!

There were door prizes and recognition of members who have done so much during the past year – actually, often year after year – for our society.

Awarding two student scholarships is an important part of the Banquet program. This year the recipients were **Rachel Ness**, who was recipient of the **William Tirk Scholarship** for jewelry and metalsmithing, and **Mason Einbund**, who was tapped to receive the **Carmelita & Bern Swartz Scholarship** for geology. (Mason was an unexpected no-show at the event, so his check will be given to him in the coming days.) Read their statements on page 4.



SDMG President Jim Parrish with guest speaker Meg Berry.



## 85th Birthday Celebration San Diego Mineral & Gem Society

**Right.** Banquet Co-Chairs Melissa Ordway and Jennifer Stapp with Junior member Kensington McGeehan.

**Below, left.** Simon King shows off his drawing prize.

**Below, right.** Nancy Brescia and Karen are all smiles with their winnings.

**Bottom, middle.** Happy Birthday to SDMG. At 85, there were too many candles to put on the cake.





a-kind and custom pieces. I would like to be represented by galleries both nationally and internationally.

Banquet Chair Jennifer Stapp with 2019 William Tirk Scholarship recipient Rachel Ness. Photo: Jim Parrish.

### *Rachel Ness*

#### *William Tirk Scholarship*

I grew up primarily in the Midwest region and received my BFA in Art Metals, minoring in Art History at the University of Wisconsin-Stout, Menomonie, Wisconsin. Currently, I am a MFA candidate in the Jewelry and Metalwork program at San Diego State University. SDSU is recognized nationally; it's among the top five Jewelry and Metalwork graduate programs. The program at SDSU has outstanding outcomes of talented alumni exemplifying diverse individualism. It has a history of hosting world-renowned visiting artists and providing incredible opportunities on an international scale. Bearing all this in mind, SDSU was an easy selection for me. I think year-round perfect weather was an added bonus – a welcome escape from the Midwest's harsh winters.

My desire to problem solve and my detail-oriented perspective drew my interest to working at the scale and level of technical proficiency that metalsmithing demands. My work incorporates commonplace found objects with alterations of scale or material value, often combined with recreated familiar elements. I aim to create mystery by the removal of meaning, reveling in the use of language to provoke curiosity and wonder at the redundancy of every day things.

My future prospects include teaching and working as a freelance artist focused on creating one-of-

### *Mason Einbund*

#### *Carmelita and Bern Swarts Scholarship*

Pursuing a career in the field of geology has been my goal since I was introduced to environmental issues and the earth sciences in my Environmental Science class in high school. I was drawn to the study of geology by the opportunity to work outside in a hands on and intellectually challenging environment.

I am currently enrolled as a MS candidate in the Geological Sciences Department at San Diego State University. Upon successful completion of this program, I plan on staying in the San Diego area to work on environmental, geologic, and groundwater related issues. Within San Diego County these issues are common, meaning I will have many opportunities to work for the public good locally. In addition, working part-time as a Geologic Field Technician for the County of San Diego has given me valuable exposure to the kinds of real geologic issues the people of San Diego face, and the best ways to tackle them.

I hope to use my ongoing education to better understand our geologic setting and the processes that operate in our world. I am proud to be a part of the San Diego State University program, which encourages student involvement and inspires academic success. I am deeply grateful to receive this scholarship. It will help me to focus on my ongoing education.





**SDMG**  
**General Meeting**  
**Monday, April 22, 2019**  
**7pm, SDMG bldg.**  
 Jim Parrish, President

**T**HE PRESENTATION for the April meeting will be **“Some Rockhounding Landmarks in the North Cady Mountains,”** by **Lisbet Thoresen.**

**About the presentation.** The Mojave Desert attracts millions of visitors every year. It is world-renowned for its unique geological features and the gem minerals and paleontological resources found there. Myriad varieties of high quality agates and jaspers with unique color combinations and patterns which are not seen elsewhere in the world are characteristic of the North Cady Mountains. The Cadies are also known for feldspar crystals, fluorites, geodes, obsidian, opalites, petrified reeds and palm root.

At the end of March, the author participated in a field trip led by **Bill Depue** to some special places in the North Cady Mountains beloved by Rockhounds. It was a whirlwind tour of the Fluorite Mine in the northeastern Pink Hills, Miners’ Cavern, The Lost Cabin, and Danny’s Dump (Pyramid Canyon), where hollow casts of fossilized Cattails are found. Participants on this trip included **Ruth Hidalgo** and husband **Paul**, **Kyle Sullivan**, **BLM** Manager of the **Mojave Trails National Monument (MTNM)**, and **Mike Sintetos**, **BLM** Planning and Environmental Coordinator, who traveled from Sacramento to see what Rockhounding is all about. (They had a rollicking good time.)

This presentation will showcase the collecting areas visited and features some the collectable materials from them. A summary will also be presented on the management planning of **BLM-administered** lands within the boundaries of **MTNM** which now enclose the Cady Mountains. There are significant recent developments.

**About the speaker.** **Lisbet Thoresen** is a rockhound advocate of preserving recreational opportunities for casual collecting, or rockhounding, on public lands. Since 2014, she has worked on public awareness campaigns on land use policies that increasingly



Heading out of “Rrar” Canyon on a well washed road courtesy of the winter rains. March 30, 2019. Photo: Lisbet Thoresen.



Mike Sintetos, Bill Depue, Kyle Sullivan, and Joe Sumners with the North Cady Mountains–Afton Canyon train trestle in the background. Wildflowers in the foreground are early Superbloom arrivals. March 30, 2019. Photo: Lisbet Thoresen.

threaten accommodation of hobby collecting or access to collecting areas on federally managed lands, primarily in Southern California’s deserts. A key objective of her efforts is to engage in constructive dialogue with other stakeholder groups over balancing competing, sometimes conflicting values concerning acceptable uses. She is currently public lands representative for **San Diego Mineral & Gem Society, Inc. (SDMG)** and formerly Chair of the Public Lands Advisory Committee – South (2016–2018), for the **California Federation of Mineralogical Societies, Inc. (CFMS).**

**What you can bring.** By all means, bring specimens you have collected in the Cady Mountains to share and discuss. Please bring something for the snack table, we will provide punch and coffee. And don’t forget our wonderful door prizes – will they go home with you? Only if you plan to attend.

## School News

Wayne Moorhead, School Director

**New Cabochon Class.** We're starting a new cabochon class on Thursday mornings, from 9 am – noon. Taught by **John Kruzel** with assistant **David Smith**, students will sign up for 4-week sessions, and attend once per week, at \$20.00 per session. Interested? To enroll, please send me an eMail at: [school@sdmg.org](mailto:school@sdmg.org).

**New Equipment for the Shop.** Casting classes will soon have a new burnout oven, and we'll be changing the burnout procedures for longer equipment life.

### Interested in casting or other metals classes?

While taking your prerequisite cabochon class, we encourage students to visit the other classes they're interested in, talk with those instructors about the tools and materials required, and when they could get into that class.

Be advised that some of our amazing instructors have long waiting lists, so talk to them and get on their lists as soon as possible. Teaching styles and techniques vary. Please remember we're all volunteers at **SDMG**, so check out some classes and see if they're a fit for you.

### April deadline for San Diego Fair entries.

Everyone wants to see what our students have been up to, so don't forget to enter your best work in the **San Diego County Fair** – **deadline is April 26!** Online entries at:

[sdfair.com/exhibits/gems-minerals-jewelry/](http://sdfair.com/exhibits/gems-minerals-jewelry/)

Fame and Fortune could be yours!

Enjoy class!

## This 'n' That...

General Announcements

Winter classes start date:

Monday, January 7th

SDMG Board Meeting

Monday, April 15, 2019

7:00pm SDMG Building



## JUNIOR DIVISION

Coordinated by  
Dave Smith

**G**REETINGS FROM THE JUNIORS. We have seen an average of 10 students in class, more or less, during the past four weeks. The **Juniors** are blessed with a variety of agates and jaspers to work on. These slabs and rocks were generously donated by many supporters. Speaking on behalf of the class, we thank you.

By the time this bulletin has been published, the class field trip to the Himalaya Mine in Santa Ysabel, near Lake Henshaw, will have happened. This mine was active from 1899 and famously supplied the dowager empress of China with crates of pink tourmaline at the turn of the 20th century. Look for photos and a trip summary in the next bulletin.

The next society event in which the **Juniors** participate will be the **Annual Barbeque**. It will be held Saturday, May 4th, on the lawn at President's Way and Park Blvd. in Balboa Park. See page 7 for more details about the **Barbeque**. We will have a table sale, with proceeds going to support the **Junior Division**.

On Monday, May 27th, the **Juniors** will hijack the **General Meeting** to host the program. Ticket sales from the raffle drawing will go to the **Junior Division** fund. Please come and support the class. We'll have an interesting speaker, lots of door prizes and refreshments. Any donations for the raffle will be gladly appreciated.



## SDMG's 58th Annual Barbeque, Silent Auction & Ugly Rock Contest

*Doug Peeler, Chairman*

Saturday, May 4, 2019

10am to 4pm

Park Blvd & Presidents Way Lawn  
Balboa Park



**T**HE ANNUAL BARBEQUE will be in the usual spot at Park Blvd & Presidents Way Lawn (back lawn at SW corner, next to 163 onramp.) Parking is Free.

### GREAT DOOR PRIZES

and more **SELLERS' TABLES** than ever

The **Spring Barbeque and Silent Auction** is one of **SDMG's** biggest annual events. There will be fun. There will be sellers' tables laden with rocks, slabs, faceting rough, tools, books, and more. There will be our world famous **H-U-G-E Silent Auction**. Bring up to 15 rock-related items to sell, with 10% of the proceeds going to **SDMG**. (You must bring your own table to sell items.) And, **NEW THIS YEAR**, a special drawing to win fabulous prizes !!

### LUNCH CATERED BY THE BARBECUE PIT

The catered lunch includes sliced beef and chicken (instead of ham), cole slaw, beans, potato salad, dinner roll, cookies, and brownies. Water and soda will be available to purchase separately for \$1 each.

### MEAL TICKET INFO

- **Cost:** \$15.00 adults, \$7.00 kids 12 & under
- For each ticket purchased, you will be entered into a drawing for fabulous prizes.
- **When:** Meal tickets on sale now – must be purchased in advance.
- **Where:** Buy tickets at the **SDMG Board Meeting** (April 15), the General Meeting (April 22), the **Village Silversmiths** and from some class instructors.

**OR** send a check payable to **SDMG** in a stamped, self-addressed envelope, post-marked no later than April 17th to:

**Anne Schafer**

7566 Tupelo Cove, San Diego, CA 92126-1039

Attendees are welcome to bring their own lunch.

### GOT QUESTIONS?

Call or text **Doug Peeler** at 619-244-075

or email: [dlpeeler@earthlink.net](mailto:dlpeeler@earthlink.net)

**Note:** Plan on arriving early to avoid Balboa Park traffic – carpool, bike in, or get dropped off / picked up afterward.

### UGLY ROCK CONTEST!

**H**EY, THIS IS a serious competition! Bring an **Embellished** (decorated to look like something), **Mimic** (already looks like something) or **Just Plain Ugly** rock, and beat your fellow twisted club members' ugly finds. Enter your rock between 10 and noon on the day of the **BBQ**. Voting occurs during lunch, and winners are announced around 2:00 pm.

**There are Prizes:** First place in each category is \$10. Second place is \$5.00, and Third place is \$1.00. See you at the Barbeque, with your Ugly Rocks.





## SAN DIEGO COUNTY FAIR GEMS, MINERALS & JEWELRY DEPT.

by Anne Schafer, Coordinator  
858-586-1637 [Agate.Annie2@gmail.com](mailto:Agate.Annie2@gmail.com)

**B E AN EXHIBITOR!** Lots of SDMG members enter the Fair each year, having fun competing against their peers with cabs and spheres, petrified wood, faceted gems and handmade jewelry. Don't get left out! The deadline is approaching fast: **Friday, April 26, at 11:59pm.**

**DON'T WAIT, ENTER NOW, AT:**

<https://sdfair.com/exhibits/gems-minerals-jewelry/>

**Volunteer! Get a free ticket to the Fair!**

**Gem I.D. ~** If you are a current or past member of the Gemological Society, or have a degree in gemology, have we got a job for you! The refractometers and microscopes will be out each weekend during the Fair, waiting for YOU! Please contact **Jim Porter** at [gemologysd@gmail.com](mailto:gemologysd@gmail.com) to sign up.

**Faceting Demos ~** If you would like to show off your faceting skills to the public (and you know how to run an Ultra Tec...), please contact **Bob Hancock** at [rtourmaline2@aol.com](mailto:rtourmaline2@aol.com) to sign up.

**Other Demos ~** Chain making, Fossil prep, Wax carving, Wire wrap, Bead stringing, and the list goes on. If you have a rock or gem related activity that does not involve an open flame, a hot oven or anything else that might endanger the fairgoer, please contact Asst. Coordinator **Jennifer Stapp** to schedule your time slot: [Cat333@san.rr.com](mailto:Cat333@san.rr.com)

**Sand Pile ~** You can help kids screen for rock treasures, talk about rocks and generally have a good time. **SDMG** will be assigned several days at the Fair. There are three shifts on each day, and each shift lasts two hours. Please contact Asst. Coordinator **Jennifer Stapp** to reserve your spot: [Cat333@san.rr.com](mailto:Cat333@san.rr.com)

### FAIR SCHEDULE 2019:

- **Online entry:** Available NOW at: [sdfair.com/exhibits/gems-minerals-jewelry/](https://sdfair.com/exhibits/gems-minerals-jewelry/)
- **Brochures:** Available online now, or in Casting Room.
- **Entry deadline:** Friday, April 26, 11:59pm (Please enter by Thursday to avoid website delays!)
- **Deliver exhibits:** Saturday and Sunday, May 25 and 26, 9am to 6pm
- **Opening day of Fair:** Friday, May 31, 4 to 11pm
- **Fair closed:** All Mondays, and Tuesday in June – June 3–4, 10–11, 17–18, 24–25.
- **Exhibitor Appreciation Night:** Wednesday, June 5, 7 to 9pm
- **Last day of Fair:** Thursday, July 4, 10am to 11pm
- **Pick up exhibits:** Saturday, July 6, 9am to 8pm

Need more Info? Give these folks a jingle:

Coordinator Anne Schafer at 858-586-1637 or [Agate.Annie2@gmail.com](mailto:Agate.Annie2@gmail.com)

Assistant Coordinator Jennifer Stapp at 858-829-1723 or [Cat333@san.rr.com](mailto:Cat333@san.rr.com)

**We look forward to seeing you at the 2019 San Diego County Fair!**



# SIXTEENTH ANNUAL SINKANKAS SYMPOSIUM PEARL

Saturday, April 27, 2019

GIA World Headquarters, Carlsbad, CA

Sponsored by GSSD • GIA • William Larson, Pala International



Photo: Mia Dixon.

Venue:	GIA World Headquarters   The Robert Mouwad Campus 5345 Armada Drive, Carlsbad, CA 92008
Sponsors:	Gemological Society of San Diego and GIA
Time:	Badging, refreshments, 8:00–9:00am. Symposium begins at 9:00am sharp.
Cost:	\$125.00 per person through April 19, 2019.
Registration:	Now Open: <a href="http://www.eventbrite.com/e/2019-sinkankas-symposium-tickets-45781581944">www.eventbrite.com/e/2019-sinkankas-symposium-tickets-45781581944</a>
Things to Remember:	No on-site registration Valid gov picture ID All attendee names must be on the list at the gate – no reservations under one name
Website:	<a href="http://www.sinkankassymposium.net">www.sinkankassymposium.net</a>

*Program:	Robert Weldon – Introduction • 8:50 – 9:00AM Douglas McLaurin-Moreno – Baja Pearls • 9:00 – 9:30AM Blair Beavers – The History of Pearls • 9:35 – 10:05AM Betty Sue King – Evolution of the Pearl Goddess • 10:10 – 10:40AM Elisabeth Strack – An Update on Pearl Localities • 11:00 – 11:30AM Bill Larson – Collecting Rare & Unusual Pearls • 11:35 AM – 12:05PM Chunhui Zhou – A Brief History of Pearl Testing Through Gems & Gemology • 1:15 – 1:45PM Stuart Robertson – Pearls: Their Market and Price Trends • 1:50 – 2:20PM Hisano Shepherd, Reinventing the Pearl • 2:25 – 2:55PM Movie: “Power of Pearl” • 3:30 – 5:00PM
-----------	---

\* Speakers and program subject to change without notice.

**Named for John Sinkankas**, one of the most distinguished and influential figures in gemology and mineralogy, the Sinkankas Symposium is an annual one-day event featuring presentations by specialists working on diverse aspects of a selected gem theme. The Sixteenth Annual Sinkankas Symposium commemorates Pearl, one of the most esteemed gems from antiquity to the present day. This year, specialist will discuss topics ranging from localities and the market to research and margaritology.

*Interest in The Sinkankas Symposium and attendance has grown every year. Space is limited and is available on a first-come, first-served basis. Registration for the one-day event includes refreshments, lunch and a copy of the 2019 Sinkankas Symposium volume, which features selected papers on Pearl.*



Photo: Mia Dixon. Courtesy of Pala International.

## Newsy Nuggets

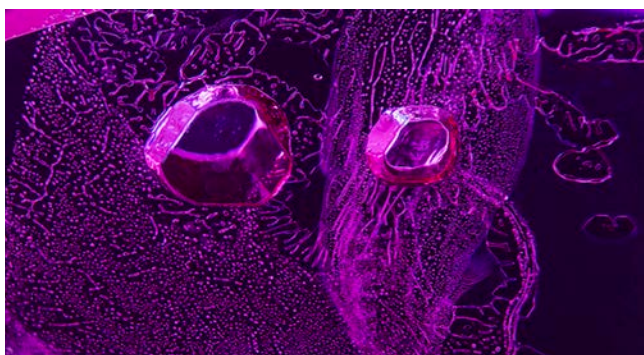
*Stories you may have missed*



Letty Evans made this photo of the verbena bloom a few miles east of Borrego Springs, on County HWY S-22.



A carpet of flowers in Baxter Wash in the North Cadies. March 30, 2019. Photo: Lisbet Thoresen.



Melted crystals against a plane of fluid-filled "hoses" and surrounded by "runny channels" in a heat-treated Thai/Cambodian natural ruby. Photomicrograph: Billie Hughes. Courtesy of Lotus Gemology.

**Hear Ye, Hear Ye.** Rockhounds, photographers, desert enthusiasts, take your cameras, pack a picnic lunch, and get out to the deserts. Peak bloom at low elevations in Southern California is anticipated in the early part of April – a little sooner than at higher elevation. The eastern Mojave Desert toward Joshua Tree is in peak bloom now. The Cady Mountains are one, perhaps two weeks away from peak bloom. (It was pretty spectacular in the North Cadies in the last weekend of March, see photo below at right.)

The **Theodore Payne Wild Flower Hotline** offers free weekly on-line and recorded updates posted every Friday from March through May. You can also find out the best locations for viewing spring wild flowers in Southern and Central California.

Call **818 768-1802, ext. 7** each Friday to hear updated reports. Visit the website at: <http://theodorepayne.org/learn/wildflower-hotline/>

**Gem Inclusion Database.** As part of a project initiated and developed by gemologist **E. Billie Hughes** at **Lotus Gemology**, the Thai-based gem trade lab has launched a searchable database featuring 900 inclusion photomicrographs. The online database is publicly available and free of charge. Dubbed **Hyperion** and described as "the world's first inclusion search engine," this marvelous resources provides useful visual references for gem industry professionals and students. The images also happen to be stunningly beautiful. Read a profile about **Ms. Hughes** and **Lotus Gemology** at: [bit.ly/natljewlr\\_hyperion](http://bit.ly/natljewlr_hyperion). Visit [www.lotusgemology.com](http://www.lotusgemology.com) for industry news, articles, books, and lecture schedule.

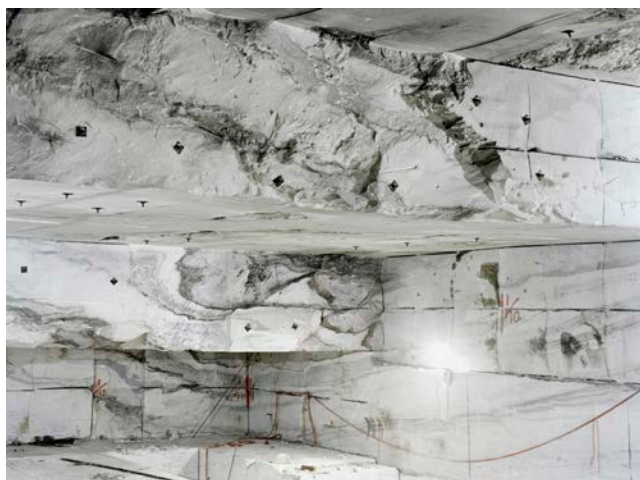


**What Lies Beneath.** A mile and a half under Dorset Mountain, in the state of Vermont, the world's largest marble quarry has been worked for more than a century. Still in production, Danby Quarry's main entrance and original square-cut mining shaft is the same one used since 1903. Above ground, little has changed in the landscape of 100 years ago, but underground Danby sprawls over 25 acres outward and down.

The quarry produces 10 types of white marble differentiated by distinctive variations of gray to greenish gray veining. Marble from Danby has been used for a variety of purposes, from kitchen countertops to gravestones in veterans' cemeteries, and cladding of architectural landmarks including the U.S. Supreme Court Building, Jefferson Memorial, and the New York Public Library.

Perhaps for the first time in the long lifespan of Danby, the cavernous expanse of its galleries carved deep into the earth's crust has been chronicled in a photographic essay. In a project entitled "Between the Ground & Sky" British born photographer Johanna Warwick submitted her images of the Danby Quarry to an open call from *The Washington Post*/Visura. Her work on Danby was one of five winning entries selected from almost 300 submissions.

Ms. Warwick's images are paradoxical – on the one hand, they are purely abstract works of art, and on the other hand, they have a forensic, analytical quality. Both evocations elicited in her work are perfectly congruent with her stated interest in photographing Danby – she was "curious about its use but eventually



A view of quarrying using modern extraction techniques at Danby. Photo: Johanna Warwick, reproduced by permission.

"Between the Ground & Sky," Johanna Warwick's photo essay on Danby Quarry is featured in *The Washington Post* under the byline of Chloe Coleman. Read the story and view the photo series at: <https://wapo.st/2JYVrpW>.

Read the artist's experience working on the quarry site in her own words at her website: <https://www.johannawarwick.com/writing>.

became charmed by the physical history carved into the space."

Johanna Warwick was raised in Canada, earned her BFA in Photography from Ryerson University, Toronto, and MFA from Massachusetts College of Art and Design, Boston. She is currently Assistant Professor of photography at Louisiana State University.



**Polynesian pearls.** The forthcoming **Sinkankas Symposium** has us thinking about pearls. An article available on the **GIA** website profiles the **Pipi Pearl**, product of the smallest mollusk species in the *Pinctada* genus. This tiny native of the Indo-Pacific Ocean, primarily around French Polynesia, usually has a yellow or golden color and is regarded as rare. Read the **Gems & Gemology** article by N. Nilpetploy, K. Lawanwong, and P. Kessrapong at: [bit.ly/gia\\_pipi\\_pearls](https://bit.ly/gia_pipi_pearls).

*Pinctada maculata* pearls alongside a *Pinctada maculata* mollusk valve with an attached blister pearl. The pearls range from 2.20 mm to 6.49 × 4.83 × 4.49 mm, and the shell measures approximately 28.54 × 26.50 mm. Photo: Nuttapol Kitdee. Courtesy of GIA.

***Artinian Gems – Poway, CA 92064******Part-Time Job:******Inventory Data Entry Plus Gemstone Photography/Videography***

For two generations, **Artinian Gems** has been known for searching out fine gemstone materials all over the world. We strive to be experts in sourcing the most beautiful gems. Whether in the mountains of central Sri Lanka, deep in the mines of Tanzania or at our gemstone cutting facility in Chanthaburi Thailand, Artinian Gems has always sought to bring the greatest value to market.

**Job Description.** The position involves working in a private, wholesale gemstone office. The right person for the job needs to have a positive attitude and be fast and effective in entering and photographing new inventory. The right person will have some knowledge of colored gemstones and to be able to quickly and accurately enter new inventory into the system, photograph it, and edit the photos/videos for the website.

***The duties involve assisting the manager in performing the related tasks:***

1. Inventory Data Entry.
2. Organizing the Inventory.
3. Gemstone Photography.
4. Editing photos in Photoshop .

**Core Competencies:**

- a. Detail-oriented with strong analytical, and organizational skills.
- b. Typing.
- c. Photoshop. (Limited knowledge is okay.)
- d. Some Gemstone product knowledge
- e. Good Judgment and problem solving skills
- f. Ability to work independently with minimal supervision.

**Compensation:**

- a. Hourly wage, based on skill level, experience and competence.

**Important technical skills to acquire or be in the process of acquiring:**

- a. Gemstone Knowledge.
- b. Gemstone Photography. (We have an easy-to-follow format for photographing gems, therefore a high level of photography skill is not required).

**How to apply:**

Please email your resume and Cover Letter to [info@artiniangems.com](mailto:info@artiniangems.com).





Please be courteous and call the field trip leader to ask if you may participate in the field trip. Be sure to call again if you decide to cancel, so folks aren't waiting around for you. All CFMS affiliate clubs will ask you to sign a waiver, and you must agree to abide by the AFMS Code of Ethics and listen to directions of the field trip leaders.

#### April 11–14, 2019

#### Topaz Mt. and Dugway Geode Beds, UT

**Materials:** Topaz Crystals, Bixbite (Red Beryl), Pseudobrookite crystals, Hematite crystals, and Geodes. Sign-up required.

**Sponsor:** CFMS Field Trips –North, Roseville Rock Rollers Gem & Mineral Society

**Contact FT Leader/s:** Gene Doyle, CO-OP & Roseville Rock Rollers Field Trip Leader, text or leave message at 408-605-9457 or email [eugene.doyle@sbcglobal.net](mailto:eugene.doyle@sbcglobal.net); Jim Barton, CFMS-N, 916-773-0458, mobile 916-847-7321, or email [geologist1@surewest.net](mailto:geologist1@surewest.net)

**Details:** [www.cfmsinc.org/fieldtrips/y2019/FT0419\\_TopazMtDugwayCFMS.pdf](http://www.cfmsinc.org/fieldtrips/y2019/FT0419_TopazMtDugwayCFMS.pdf)

#### April 27, 2019

#### Cady Mountains

**Meeting time & place:** 8:00 am, Dairy Queen in Ludlow

**Materials:** Agates and jasper

**Sponsor:** Ventura Gem & Mineral Society

**Contact FT Leader:** John Cook

**Sign up online:** [www.whoscoming.com/vgms](http://www.whoscoming.com/vgms)

**Details:** It's a long drive, so participants might consider arriving in the area on Friday night. Barstow has inexpensive hotels. (Barstow is approximately 36 minutes from Ludlow.) High clearance 4×4 vehicle recommended to negotiate sandy and rocky terrain in the desert. If you travel during daylight hours on Friday and your route to Barstow/Ludlow passes by wildflower viewing areas such as Antelope Valley or Lake Elsinore, plan an extra hour for travel time. If you can, avoid these areas to avoid long delays.

#### May 11, 2019

#### Calico

**Meeting time & place:** 8am, north side of Hwy 15 after exiting at the Yermo off ramp just past the Calico Ghost Town off ramp (heading east). Look for Edie World gas/food stop with the giant ice cream cone/sundae(?) in the parking area.

**Materials:** Silver Lace Onyx/Fossilized Palm Root

**Sponsor:** Conejo Gem & Mineral Society

**Contact FT Leader:** Chuck Borchart, [chuck.cgmctrips@gmail.com](mailto:chuck.cgmctrips@gmail.com)

**Sign up online:** [www.whoscoming.com/vgms](http://www.whoscoming.com/vgms)

**Details:** High clearance 4×4 vehicle recommended. Bring a short shovel. Participants will be working a relatively steep tailing pile, so this IS NOT a great trip for children.

## ON THE GO ... TO A SHOW



### APRIL .....

#### 4-7 JOSHUA TREE, CA – JT Sportsmans Club 44th Annual Show

**Venue:** Sportsmans Club

6225 Sunburst Ave, Joshua Tree, CA 92252

**Admission:** Free.

**Contact:** Wayne Hamilton, 760-366-2915

or [jtsportsmans@ymail.com](mailto:jtsportsmans@ymail.com)

**Web:** [www.jtsportsmansclub.com/gem.html](http://www.jtsportsmansclub.com/gem.html)

**Flyer:** [www.jtsportsmansclub.com/](http://www.jtsportsmansclub.com/ShowFlyerSpring2019.pdf)

[ShowFlyerSpring2019.pdf](http://www.jtsportsmansclub.com/ShowFlyerSpring2019.pdf)

Over 60 Dealers in warm and sunny Joshua Tree, California, located only 30 miles north of Palm Springs and right next to the world famous Joshua Tree National Park. This wholesale/retail show offers everything from rugged rough rock, mineral specimens, crystals, precious gemstones, and millions of beads to exquisite fine jewelry. Abundant number of fine vendors offering something for everyone.

#### 12-14 DENVER, CO – Colorado Mineral & Fossil Spring Show

**Sponsor:** Rocky Mtn Gem & Mineral CO-OP  
(formerly Martin Zinn Expos)

**Venue:** Crowne Plaza Denver Airport Convention Center, 15500 E 40th Ave., Denver, 80239

**Hours:** Fri & Sat 9am – 6pm;

Sun 10am – 5pm

**Admission & Parking:** Free

**Web:** [www.rockygems.com](http://www.rockygems.com)

[www.coloradomineralandfossilshows.com](http://www.coloradomineralandfossilshows.com)

### Vista Gem & Mineral Society 2019 Show

**April 5 – 7, 2019**

Antique Gas & Steam Engine Museum

2040 N. Santa Fe Ave.

Vista, CA 92083

Fri & Sat 9am – 5pm

Sun 9am – 4pm

Free Admission & Parking

Contact: [vistarocksgms@gmail.com](mailto:vistarocksgms@gmail.com)

Web: [www.vistarocks.org/april-show.html](http://www.vistarocks.org/april-show.html)

***Fabulous vendors  
in a fabulous rustic setting***

If you've never been to a VGMS show at the Antique Gas & Steam Engine Museum, you gotta see it – it's a hidden treasure.

This is an outdoor event in a rustic setting with up to 80 vendors offering jewelry, slabs, cabs, and rough stones of all kinds. Tools, equipment, and other lapidary related items. Raffle on Sunday at 3pm.

## JOHN E. GARSOW gems & minerals

**APRIL 12-14, 2019**

**COLORADO MINERAL & FOSSIL SHOW  
DENVER**

Crown Plaza Denver Airport Convention Center

Facet Rough • Cabbing Rough

Jewelry • Mineral Specimens

[www.johngarsow.com](http://www.johngarsow.com)





**13–14 PASO ROBLES, CA – 28th Annual Rock & Gem Show – Discover the World of Crystals and More!**

**Sponsor:** Santa Lucia Rockhounds

**Venue:** Paso Robles Event Center  
2198 Riverside Ave, Paso Robles CA 93446

**Hours:** Sat 10am – 5pm; Sun 10am – 4pm

**Admission:** \$5.00. Children under 16 and active military Free. Public welcome.

**Contact:** [slrockhounds@gmail.com](mailto:slrockhounds@gmail.com)

**Web:** [www.slrockhounds.org](http://www.slrockhounds.org)

Rock, gem, and jewelry dealers; gold panning; Kids' activities; rock and mineral exhibits; drawings and prizes; demonstrations; rock balancing.



**13–14 THOUSAND OAKS, CA – CGMC Pageant of a Thousand Gems**

**Sponsor:** Conejo Gem & Mineral Club

**Venue:** Borchard Park Community Center  
190 Reino Road at Borchard Road, Thousand Oaks, CA 91320

**Hours:** Sat 10am – 5pm; Sun 10am – 4pm

**Admission:** Free

**Contact:** [borchartcme@gmail.com](mailto:borchartcme@gmail.com)

**Web:** [www.cgmc.org](http://www.cgmc.org)

**27–28 LANCASTER, CA –AVGMS Annual Gem & Mineral Show**

**Sponsor:** Antelope Valley Gem & Mineral Society

**Venue:** Antelope Valley Fairgrounds (new location) 2551 West Ave. H, Lancaster, CA 93536

**Hours:** 10am – 5pm daily

**Admission & Parking:** Free.

**Web:** [avgem.weebly.com/gem--mineral-show.html](http://avgem.weebly.com/gem--mineral-show.html)

Vendors selling rocks, minerals, gemstones, bead, books, jewelry, jewelry making supplies, plus displays and demonstrations. Free hourly drawings and Raffle prizes. Daily field trips (meeting at 9am). Dinosaur Program presentation, Saturday at 1pm.

**27–28 RENO, NV – Reno Gem & Mineral Society 54th Annual Jackpot of Gems Show**

**Venue:** Reno-Sparks Livestock Event Center;  
1350 N. Wells Ave., Reno, NV 89512

**Hours:** Sat & Sun 10am – 6pm

**Web:** [www.renorockhounds.com](http://www.renorockhounds.com)



**27 SANTA ANA, CA – Art of Adorning Bead Bazaar**

**Sponsor:** Bead Society of OC

**Venue:** Bowers Museum of Cultural Art  
2002 N. Main St., Santa Ana, CA 92706

**Hours:** 10am – 4pm.

**Admission:** Free. (museum admission not incl.)

**Web:** [beadsocietyoc.org/art-of-adorning/](http://beadsocietyoc.org/art-of-adorning/)

75+ premier artisan vendors, there will be a wide selection of handcrafted jewelry, beads and bead-related items for sale, plus a raffle.



## MAY .....

### 3–5 YUCAIPA, CA – YVGMS 59th Annual Show

**Sponsor:** Yucaipa Valley Gem & Mineral Society at the Yucaipa Music & Arts Festival

**Venue:** Adams St. & Yucaipa Blvd.

**Hours:** Fri 6–10pm; Sat noon – 10pm; Sun noon – 7pm.

**Admission:** Free. Public welcome.

**Contact/More Info:** 909-238-8143

**Web:** [www.yvgms.org](http://www.yvgms.org)  
[bit.ly/yvgms\\_show\\_2019](http://bit.ly/yvgms_show_2019)

Vendors will provide a wide range of jewelry and artistic creations. Stop by the society's store booth, too. The popular geode cracker machine will be in action along with the prize wheel for the young ones. For the adults, the annual raffle will provide a chance to win the \$1,000 cash prize among the many winning items. Tickets are now on sale (six for \$5) and will be available at the festival. Winners need not to be present to win.

### 4–5 ANAHEIM, CA – Searchers Gem & Mineral Society Annual Show

**Venue:** Brookhurst Community Center  
 2271 W. Crescent Ave., Anaheim, CA 92801

**Hours:** Sat 10am – 5pm; Sun 10am – 4:30pm.

**Admission & Parking:** Free. Public welcome.

**Website:** [www.searchersrocks.org](http://www.searchersrocks.org)

The show features many dealers with their rock- and jewelry-related wares, and the best silent auction around. There will be displays of members' work, demonstrations of lapidary, stone carving, jewelry making, wire wrapping,

faceting and many other rock and jewelry skills. There is a children's jewelry area where youngsters can make a piece of jewelry and take it home. Last but not least – a wheel of fortune.

### 4–5 JACKSON, CA – Gem & Craft Fair at the Kennedy Mine

**Sponsor:** Amador County Gem & Mineral Society

12594 Kennedy Mine Rd (off Hwys 49/88)

**Hours:** 10:00am – 4:00pm daily

**Contact:** Gaylene Lichty, 209-245-5388  
 or [mountaingirl@volcano.net](mailto:mountaingirl@volcano.net)

**Web:** [www.amadorgemandmineral.org/show.html](http://www.amadorgemandmineral.org/show.html)  
 Rocks, Slabs, Hand Crafted jewelry, Beads, Gemstones and other hand crafted items.

### 10–12 COSTA MESA, CA – West Coast Gem & Mineral Show (Spring)

**Sponsor:** LLD Productions

**Venue:** Hilton Orange County/Costa Mesa  
 3050 Bristol Street, Costa Mesa, CA 92626

**Hours:** Fri and Sat 10am – 6pm;  
 Sun 10am – 5pm

**Admission:** Free. Public welcome.

**Parking:** \$10.00

**Web:** [www.mineralshowslld.com/west-coast-spring](http://www.mineralshowslld.com/west-coast-spring)  
 75 dealers, wholesale and retail, featuring minerals, fossils, gems, jewelry, beads, crystals, meteorites, lapidary, decorator items and gifts. Resale certificate required for admission to wholesale.



# West Coast Gem & Mineral Show

## May 10 - 12, 2019

### NEW LOCATION!

### Hilton Orange County

3050 Bristol St., Costa Mesa, CA 92626



*Neptunite, San Benito Co, CA  
Photo by Jeff Scoville  
Martin Zinn Collection*

**FREE Admission**  
**Parking \$10/day**  
**OPEN to the Public**

**75 Select Retail & Wholesale Dealers**  
**Minerals ♦ Fossils ♦ Gems ♦**  
**Jewelry ♦ Lapidary ♦ Home Decor**

See our website for directions

[www.MineralShowsLLD.com](http://www.MineralShowsLLD.com)

# KRISTALLE

Est. 1971

*Wayne and Dona Leicht*

WE ARE CASH BUYERS FOR SINGLE SPECIMENS AND ENTIRE COLLECTIONS!

875 North Pacific Coast Highway - Laguna Beach, CA 92651

949.494.5155 - fax: 949.494.0402

e-mail: [info@kristalle.com](mailto:info@kristalle.com)



## SDMG BOARD MEETING HIGHLIGHTS

March 18, 2019

**In attendance:** President Jim Parrish and Board members Andy Anderson, Donna Beers, Rocio Bergum, Bob Hancock, John Kruzel, Wayne Moorhead, Melissa Ordway, Doug Peeler, Ellen Riceman, Anne Schafer, Dave Smith, Dee Smith, Jennifer Stapp, Paul Williams and Jill Williamson. A quorum was present. **Excused:** Dona Casey, Stephanie Griffin, Lois Lukasky and Sally Parrish. **Guests:** Al Bergum, Letty Evans, Mark Kantas and Denny Turner.

**Juniors:** Dave Smith reported Junior class attendance was 11 to 12 for the past two Saturdays. The Himalaya Mine (Lake Henshaw Resort) Field Trip is scheduled for March 30th. So far, 18 Juniors and 15 adults are signed up.

**Museum Curator:** Jim Parrish is mounting more specimens, and hopes to have the Dino Bone and Meteorite exhibits on display by December Nights 2019.

**School Director:** Wayne Moorhead reported that a new Thursday daytime cab class is set to begin on April 4, with John Kruzel as instructor and Dave Smith as assistant instructor.

Two new Titan grinders have been installed in the Cab Room. Instructors are asked to remove hoods and pans during cleanup, in order to clean and mop up water behind the grinders.

Paul Williams used his Friday day off to repair the 18" slab saw, replacing the sliced up shaft.

New torch handles and hoses have been installed in the Silver Room.

A meeting of the casting instructors yielded an agreement to teach higher level casting techniques, and to use standard burnout procedures to prolong kiln life.

A motion carried, 15-1, to purchase a new casting oven with controller, cost NTE \$2,500.

Potential increases in class fees were discussed, as were per flask charges for casting.

**School Liaison:** Bob Hancock reported that Wednesday morning faceting class is full. Dave

Smith reported there are 5 students in Elbert McCune's Wednesday evening faceting class. Also, that Dave discovered the flat laps were not being dried off completely before storage, which could lead to problems with rust.

**Librarian:** Donna Beers is using Gemological Society equipment to do Gem I.D. on Tuesdays, when the Library is open. Hours: Tuesdays, 2–4 pm; Wednesdays, 9–11 am and 1–3 pm.

**Donations:** (1) Tree Hill donated a Genie, a faceting machine, a 6" trim saw, a box of books, two used electric motors and a box of supplies. (2) Anonymous donation: 10" trim saw blade.

**CFMS:** The CFMS show was held at the Pomona Fairplex. Jim Parrish, Wayne and Peggy Leibitzke attended.

**Friendship:** Lois Lukasky has moved into assisted living in Chula Vista. A motion passed unanimously to recognize Lois with a Lifetime Achievement Award for her contribution to the Society. A motion passed unanimously to accept Lois Lukasky's retirement from the Board of Directors, and to replace her with Denny Turner.

**Banquet:** Jennifer Stapp and Melissa Ordway reported attendance of 77, and a great program by Meg Berry as a last-minute replacement for the original speaker. One of the scholarship recipients was a no-show; Jennifer will contact him to find out the circumstances behind his absence, and make arrangements for him to pick up his scholarship check.

**BBQ:** Doug Peeler reported the table rental company required payment of invoice before the event. Jennifer Stapp to provide A/V contact info to Doug. Tickets will be \$15 for adults, and \$7 for those under 12. Melissa Ordway offered to conduct the door prize drawing.

**New Business:** Donna Beers announced that the Sinkankas Symposium will be held on April 27th, featuring "Pearls". The Early Bird registration deadline has been extended to April 1st.

Jim Parrish is considering establishing a Ways & Means Committee or a Building Improvement Committee in the future.

*(Any member may attend Board meetings. The next one is April 15, 2019, at 7 pm in the SDMG Building.)*



# WANTED DEAD OR ALIVE

## BARK BEETLES for causing Sudden Oak Death



Photo: G. Arakelian

The *Western Oak Bark Beetle* and its accomplices, *Oak Bark Beetle*, the *Goldspotted Oak Borer*, and the *Polyphagous Shot Hole Borer* have been marauding the countryside, and in a widening swath of destruction they've been killing California natives – the coast live, canyon live, and black oak.

The beetle rampage is spreading a pathogenic fungus that causes foamy bark canker disease, which is fatal!

This nefarious gang of pests is spreading across the state by hiding out in firewood.

~ Be on the lookout ~

**Don't transport firewood.  
Use firewood locally.**

**Learn how to spot  
these dangerous pests.**

[www.dontmovefirewood.org](http://www.dontmovefirewood.org)

## Parking Lot Spanish Village

### Attention Students and Instructors.

Some **SDMG** members or students are double parking behind other's automobiles in the back parking lot. This is both illegal and very unsafe. Should emergency vehicles need to reach the SVAC patio, double-parked cars will block their access. Double-parked cars will be subject to towing at the owner's expense.

Thank you for your help with this matter.

Sincerely,  
SVAC Executive Board of Directors

## SDMG-GSSD Library

SDMG Bldg.  
Donna Beers

### Hours:

Tuesdays 2–4pm  
Wednesdays 9–11am and 1–3pm

*Reference use only, no lending.*

**Access the catalog online at:**

<https://cloud.collectorz.com/sdmgmerklib/books>

### Who may use the Library?

Membership is not required to view the catalog, but only **SDMG or GSSD** members may come use the reference library.

### We Need Volunteer Assistant Librarians.

Members willing to volunteer in the Library will enable us to extend the hours of access.

**If you can help out, contact Donna:**  
[librarian@sdmg.org](mailto:librarian@sdmg.org)



## San Diego Mineral & Gem Society, Inc.

A Non-Profit Educational and Scientific Organization

### Membership Information:

Interested in minerals, fossils, lapidary, gems, or handcrafted jewelry? We are, too!

There are now two ways to apply for or renew your membership –

- 1.) Send a check with your membership form to the membership secretary. The renewal form can be found at the **Village Silversmiths Shop** in the **SDMG** Building the **SDMG** website at:

[www.sdmg.org/sdmg-public/pdf/sdmg-membership-app-and-renewal.pdf](http://www.sdmg.org/sdmg-public/pdf/sdmg-membership-app-and-renewal.pdf)

Mail your completed application and check to:

San Diego Mineral & Gem Society  
attn: Angela Cannon  
P.O. Box 710783, Santee, CA 92072

MAKE CHECKS PAYABLE TO:

**San Diego Mineral and Gem**

Please allow up to 3 weeks  
for processing your application

◇◇◇◇◇◇◇◇◇◇ **OR** ◇◇◇◇◇◇◇◇◇◇

- 2.) Sign up online using major credit cards via PayPal. Visit the SDMG website for details at:

[www.sdmg.org/sdmg-membership/](http://www.sdmg.org/sdmg-membership/)

Pay with mailed check: \$30 – first Adult Member

OR – Pay using PayPal: \$32 – first Adult Member

\$10 – Associate Adult Member at same household

\$10 – Junior Member

\$10 – printed/mailed copy of *The Pegmatite* bulletin

**Subscribe yourself to the eNewsletter at: <https://goo.gl/KZqPsc>**

published from September thru June  
at the same time as *The Pegmatite* bulletin  
(PDF online version)

**Members, you must subscribe yourself,  
we cannot do it for you!**

**Got questions?** Email the SDMG Membership secretary at: [membership@sdmg.org](mailto:membership@sdmg.org)

## CLASSIFIED ADS

### OCEANVIEW MINE TOUR & SCREENING TRIPS:

Sundays, 11:00am to 3:00pm

For more information  
please visit [www.digforgems.com](http://www.digforgems.com)

or call Jeff Swanger at 760-415-9143

Reservations required.

\$75. Adults \$60. Children (ages 5 to 11)

Family rates available.

### HIMALAYA MINE TAILINGS:

Thursday-Monday, 10:00 am to 3:00 pm.

At the Lake Henshaw Resort on Highway 76.

Adults, \$75 per day. Kids 12-15, half price.

Screening tables, buckets, and shovels provided.

Call (775) 830-5797

or (775) 772-7724 for more info

Website:

[www.highdesertgemsandminerals.com/](http://www.highdesertgemsandminerals.com/)

## WEBSITES

SDMG:

[www.sdmg.org](http://www.sdmg.org)

CFMS:

[www.cfmsinc.org](http://www.cfmsinc.org)

AFMS:

[www.amfed.org](http://www.amfed.org)

PUBLIC LANDS:

[www.amlands.org](http://www.amlands.org)

BLM:

[www.ca.blm.gov](http://www.ca.blm.gov)

BOB'S ROCK SHOP:

[www.rockhounds.com](http://www.rockhounds.com)

ROCKHOUND FORUM:

[groups.yahoo.com/neo/groups/la-rocks/info](http://groups.yahoo.com/neo/groups/la-rocks/info)



## CLASS SCHEDULE – 2019

### REGISTRATION IS REQUIRED BEFORE ALL CLASSES.

Email [school@sdmg.org](mailto:school@sdmg.org) for class availability before attending any class to find out when the class starts and ends, if special materials are required and whether you qualify to attend. Fee is \$5.00 per class; it is usually easier for instructors if payment is made for a full month; cash or checks only, please. **Classes are open to members only** and students must read and follow the **School Rules** available in the classroom and at:

<http://www.sdmg.org/class-schedule/school-rules.pdf>

<b>CABOCHONS</b>  Starts April 4, 2019 → email <a href="mailto:school@sdmg.org">school@sdmg.org</a> to sign up	Wed	9 – 11:30am	Jim Claypool
	Wed	6 – 9pm	Nita Sani
	Thu	9am – noon	John Kruzel
	Thu	7 – 9pm	Jon Evans
<b>FACETING</b>	Tue	noon – 3pm	Elbert McCune
	Tue	7 – 9pm	Jerod Schneider
	Wed	9am – noon	Bob Hancock
	Wed	noon – 3pm	Donna Beers
	Wed	7 – 9pm	Elbert McCune
	Thu	7 – 9pm	Bill Brisebois
<b>BEG. METALS FABRICATION</b>	Tue	9am – noon	Jill Williamson
	Tue	noon – 3pm	Jill Williamson
	Wed	6 – 9pm	Stephanie Griffin
	Thu	9am – noon	Denny Turner
	Thu	1 – 4pm	Denny Turner
<b>ADV. METALS FABRICATION</b>	Tue	7 – 9pm	Al Puente
	Wed	9am – 3pm	Denny Turner
	Wed	9am – 3pm	Jackie Leverone
	Thu	7 – 9pm	Ellen Riceman
	Fri	9:30am – noon	Jill Williamson
	Fri	12:30 – 3:00pm	Jill Williamson
<b>CASTING</b>	Mon	1:30 – 7:00pm	Rocio Bergum
	Tue	9am – 2pm	Dave Smith
	Fri	5 – 7pm	Rich Yarbrough
<b>STONE SETTING</b>	Mon	by appointment	Miguel Asmar
<b>ROCK CARVING</b>	Mon	9am – 1pm	Jan Kunsu
<b>SPHERE MAKING</b>	Sat	1 – 3:30pm	Paul Williams
<b>JUNIORS</b>	Sat	10am – 1pm	Dave Smith



# **Thomas M. Schneider Quality Gemstones**



**861 6th Avenue, Suite 517**

**San Diego, CA 92101**

**[www.tmsgems.com](http://www.tmsgems.com)**

**Ph: 619-232-2624**

**Fax: 619-232-2213**

ELEVENTH ANNUAL  
SINKANKAS SYMPOSIUM  
RUBY



April 6, 2013 - Carlsbad, California

TWELFTH ANNUAL  
SINKANKAS SYMPOSIUM  
PERIDOT  
& UNCOMMON GREEN GEM MINERALS



THIRTEENTH ANNUAL  
SINKANKAS SYMPOSIUM  
OPAL



FOURTEENTH ANNUAL  
SINKANKAS SYMPOSIUM  
SAPPHIRE



FIFTEENTH ANNUAL  
SINKANKAS SYMPOSIUM  
TANZANITE AND TSAVORITE



**THE ANNUAL SINKANKAS SYMPOSIUM – PEARL**  
**Saturday April 27, 2019, Carlsbad, CA**

[www.sinkankassymposium.net](http://www.sinkankassymposium.net)

**“The best gem mineral symposium  
in North America.”**  
– John Koivula

## AL'S OPAL IMPORTS & LAPIDARY

**3684 Fairmount Avenue  
San Diego, CA 92105  
619 282-1700**

Al Ramirez, proprietor  
*U.S. Navy WWII South Pacific veteran*

### Unmounted Australian and African Opals

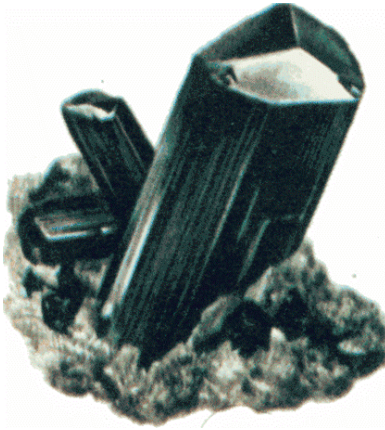
- Lapidary equipment new or used
- Tumblers, diamond blades, belts and grits
- Rough rock for faceting, slabbing or tumbling
  - Recycle your gold or silver jewelry into new designs or repair
- A variety of finished jewelry in silver or gold
  - Faceting gemstones

*All work done on premises  
Layaway Available*



**HOURS:**  
**Monday thru Friday**  
**8:30am to 3:30pm**  
**Saturday**  
**9:00am to 1:00pm**





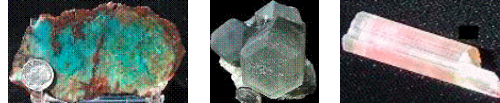
## MinersGallery.com

Rock Slabs, Bulk rock, Crystals, Jewelry,  
Fossils, Gems and Petrified Wood.

Phone: (619) 445-0800

[richard@minersgallery.com](mailto:richard@minersgallery.com)

[www.minersgallery.com](http://www.minersgallery.com)



Minerals and crystals from around the world

**\* ROCKS \* MINERALS \* GEMS \* JEWELRY MAKINGS \***

**\* LARGEST INVENTORY \***

**\* \* BEST QUALITY \* \***

**\* LOWEST PRICES \***

**\* NEW ARRIVALS DAILY \***

## **SOUTH AMERICAN IMPORTS**

**Direct Importers**

**2461 San Diego Ave. #104**

**San Diego, CA 92110**

**In Old Town, in Coyote Café Shopping Center**

**Tel: (619) 299-3877**

**OPEN EVERY DAY!**

# Village Silversmiths

**Bead Work  
Jewelry  
Slabs**

**1770 Village Place  
Balboa Park  
San Diego, CA 92010  
619 239-8812**

**Carvings  
Rocks  
Cabs**





2620 West Main St. Barstow CA 92311

Our business is putting fun and pride  
into your lapidary hobby or profession  
by making the right tools for your needs

## Astounding Selection of Minerals & Fossils from Around the Globe



## MINERS GEMS

Experts in Geology, Gemology & Paleontology

World Famous Gold Rush  
Rock Shop & Mining Museum

Daily Mineral Panning and Geode Cutting

Educational Programs Available

In Old Town San Diego State Historic Park  
2616 San Diego Avenue, San Diego CA 92110  
619-688-1178

[minersgemsandminerals@cox.net](mailto:minersgemsandminerals@cox.net)  
[www.minersgemsandminerals.com](http://www.minersgemsandminerals.com)



## San Diego Mineral & Gem Society, Inc.

A Non-Profit Educational and Scientific Organization

1770 Village Place, Balboa Park

San Diego, CA 92101-1651

[www.sdmg.org](http://www.sdmg.org)

### WELCOME!

The SDMG Building  
is located  
at the north end of  
Spanish Village  
in Balboa Park

SDMG Museum hours:  
11:00am to 4:00pm

Get information  
on classes, events,  
field trips, reports,  
reviews, slideshows  
and more at:

[www.sdmg.org](http://www.sdmg.org)

### ADDRESS SERVICE REQUESTED



### THE PEGMATITE – APRIL 2019

Sun	Mon	Tue	Wed	Thu	Fri	Sat
31	1	2	3	4	5 VGMS Tailgate, Vista 10am - 4pm begin	6
7 VGMS Tailgate, Vista end	8	9	10	11	12	13
14	15 SDMG Board Mtg 7pm, SDMG bldg	16	17	18	19	20
21	22 SDMG General Mtg 7pm, SDMG bldg	23	24	25	26 SD Fair Deadline for entries 11:59pm PDT	27
28	29	30	1	2	3	4