



San Diego Mineral & Gem Society, Inc.
A Non-Profit Educational and Scientific Organization

THE PEGMATITE

FEBRUARY 2019



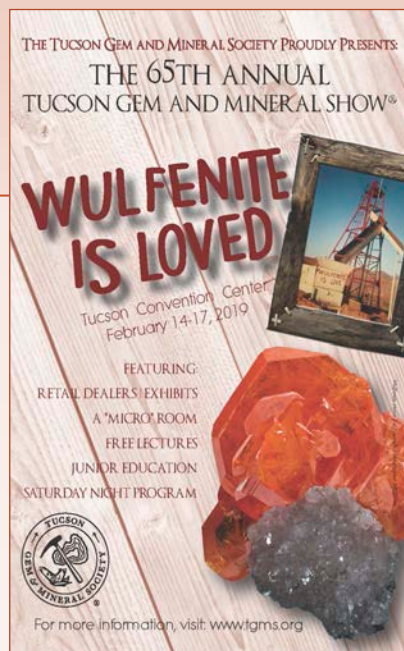
SDMG GENERAL MEETING

Jim Parrish, President

Monday, February 25, 2019
7:00pm, SDMG Bldg.

THE FEBRUARY MEETING will be the annual **Show 'N' Tell** of finds from Quartzsite and Tucson. Snowbirds have been flocking to Quartzsite for weeks, where the best deals and exceptional materials can be found. In Tucson more than 4,000 exhibitors/vendors come together from all around the world to show and sell at more than 40 venues throughout the city. Eighteen exhilarating days of gems, minerals, fossils, lapidary and jewelry-related items, books, gifts, and more culminate in **Tucson** with the **TGMS** show held at the convention center February 14–17. (Check the show listings in this month's bulletin, p. 11.)

Come to the meeting prepared to show off the treasures you found and tell us about them. After the meeting we'll have some snacks. Please bring a treat to share. The Club will provide punch, coffee, and tea.



Official bulletin of the San Diego Mineral and Gem Society, Inc.

Affiliations: California Federation of Mineralogical Societies
American Federation of Mineralogical Societies
American Lands Access Association

Sister Club: Kingston Lapidary, Hull, England

Publication: *The Pegmatite* is published monthly (except July and August).

Submission Deadline: 3rd Tuesday of the month preceding next month's publication, unless otherwise indicated.

Membership: Anyone with an interest in minerals, fossils, lapidary, gems, or hand-crafted jewelry may join the Society. Contact: membership@sdmg.org

Liability: The San Diego Mineral & Gem Society, Inc., is not and cannot be held responsible and liable for personal injuries, for damage or loss of property at any meetings, field trips, classes, shows, or any event sponsored or recommended herein.

Copyright: ©2019 San Diego Mineral and Gem Society, Inc. Non-commercial reprint permission given, unless otherwise noted, provided proper credit is given.

Street Address: 1770 Village Place
San Diego, CA 92101-1651

Mailing Address: P.O. Box 710783
(membership apps) Santee, CA 92072
attn: Angela Cannon

Phone: 619-239-8812

Website: www.sdmg.org

Editor: Lisbet Thoresen, editor@sdmg.org

Layout, Advertising: info@sdmg.org

General Information: admin@sdmg.org

Change of Address: membership@sdmg.org

Exchange bulletins: Send to the Society mailing address

The mission of the San Diego Mineral and Gem Society, Inc., is to disseminate knowledge of mineralogy and earth sciences; to encourage the study of these subjects; to conduct classes in mineralogy and lapidary arts; to conduct field trips for the collection and study of specimens; to encourage interest in mineralogy and lapidary arts among young people; and to procure and maintain a collection related to the earth sciences and lapidary arts.

SDMG's 84th ANNUAL BANQUET

Saturday, March 16, 2019

Jennifer Stapp, Chairperson

banquet@sdmg.org

Program: Making CAD Jewelry

by Larisa Zolotova

Join us for a special evening



"Marilyn Monroe" ring. Design by: Larissa Zolotova.

Venue: Elijah's Restaurant
7061 Clairemont Mesa Blvd
San Diego, CA 92111

Cost: \$35.00/person

Ticket Information: See box at right

Adjustment Hour: 5:00 – 6:00 pm
Light refreshments, coffee, cash bar.

President's Welcome: 6:00 pm

Dinner: 6:15 pm

**Scholarship
presentation:** 7:15pm

Program: 7:30 pm
Presentation by Larisa Zolotova

JOIN US AT OUR 85TH ANNUAL BIRTHDAY CELEBRATION for **SDMG** at **Elijah's Restaurant** in San Diego. We'll be honoring our own, including past presidents and members who teach, volunteer, or contribute in countless ways. The banquet is the event where we formally support students interested in geology and lapidary-gem-jewelry arts. Scholarships will be awarded in these specialty areas to two promising students. This year **Rachel Ness** will be awarded the **William Tirk Scholarship** and **Mason Einbund** will receive the **Carmelita & Bern Swartz Scholarship**.

The speaker for the 2019 banquet will be award-winning jewelry designer **Larisa Zolotova**. Her intricate creations reflect the dynamic connection between functional and sculptural considerations. Her presentation will focus on the use of CAD software for designing jewelry. **Larisa**

Tickets will be on sale Fri, February 1st through Tue, March 12th. Available from:

- **The Village Silversmiths'** shop in the SDMG Building, 11:00 am to 4:00 pm daily
- **Jim Parrish** at the Board Meeting on Monday, February 18, or the General Meeting on Monday, February 25, both at 7pm
- **Bob Hancock's** Wednesday faceting class
- **Dave Smith's** Tuesday casting class or Saturday Junior Division class

**Tickets available
through Tuesday, March 5th
by mail from Chairperson:**

- Write a check for \$35.00 per person payable to: **SDMG**
- Send your check to:
Jennifer Stapp
PO Box 500536
San Diego, CA 92150

received training as a bench jeweler at the School of Jewelry Arts in St. Petersburg, Russia, and earned certifications from the GIA as Graduate Gemologist and Accredited Jewelry Professional in 2015. The following year, she graduated from GIA's diploma program in Jewelry Design & Technology.

All SDMG members and their guests are welcome to attend!

16th ANNUAL SINKANKAS SYMPOSIUM PEARL

Saturday, April 27, 2019

GIA World Headquarters, Carlsbad, CA

Registration opens Tuesday, February 12, 2019

Venue: GIA World Headquarters | The Robert Mouwad Campus
5345 Armada Drive, Carlsbad, CA 92008

Sponsors: Gemological Society of San Diego and GIA

Time: Badging, refreshments, 8:00–9:00am.
Symposium begins at 9:00am sharp.

Cost: \$110.00 per person through March 15, 2019;
\$125.00 March 16 through April 25, 2019.

Registration: Starts February 12, 2019. Online Only.
Check website on or after Feb 12 for the link.

The Rules: No on-site registration
Valid gov picture ID
All attendee names must be on the list at the gate – no reservations under one name

Website: www.sinkankassymposium.net



Photo: Mia Dixon. Courtesy of Pala International.

Speakers*

Elisabeth Strack
Betty Sue King
Bill Larson
Stuart Robertson
Chunhui Zhou
Douglas McLaurin
Marisa Goebel
Hisano Shepherd
Dona Dirlam

* Speakers and program subject to change without notice.

GEMOLOGICAL SOCIETY of SAN DIEGO



GSSD General Meeting
Monday, March 4, 2019
7:00pm SDMG Building

SPEAKER TO BE ANNOUNCED. Bring your Tucson and Quartzsite finds to share.

Any snacks you wish to bring will make the night even better.

SDMG-GSSD Library

SDMG Bldg.
Donna Beers

Hours:

Tuesdays 2–4pm
Thursdays 4–6pm

(except first two weeks in February)

Reference use only, no lending.

Access the catalog online at:

<https://cloud.collectorz.com/sdmgmerklb/books>

Who may use the Library?

Membership is not required to view the catalog, but only **SDMG or GSSD** members may come use the reference library.

We Need Volunteer Assistant Librarians.

Members willing to volunteer in the Library will enable us to extend the hours of access.

If you can help out, contact Donna:



SAN DIEGO COUNTY FAIR GEMS, MINERALS & JEWELRY DEPT.

by Anne Schafer, Coordinator
858-586-1637 Agate.Annie2@gmail.com

EVERYTHING IS OZ-SOME! You're invited to skip down the yellow brick road with lions and tigers and bears, oh my – because the 2019 Fair theme is based L. Frank Baum's great book, *The Wonderful Wizard of Oz*.

OZ-some new classes are offered this year:

- **Mineral of the Year:** Birthstone Minerals. One or five specimens, your choice.
- **Fossil of the Year:** Ammonites.
- **Trace Fossil:** One specimen, worldwide, any size. (Ex: footprint, trail, burrow, etc.).
- **Gemstone Carving:** Beginner. Four entries maximum.
- **Fair Theme Jewelry:** "Wonderful World of Oz". Single piece.

Online entry is already up! Go to www.sdfair.com and mouse over "PARTICIPATE"; when the drop-down menu appears, click on "COMPETITIVE EXHIBITS". Scroll down until you find the Gems & Minerals & Jewelry box, then click on it.

Read everything first! Click on the blue bar labeled "**Entry Information**" and you will bring up the PDF file that has all this year's classes, rules, sample labels for jewelry and so on. Need more info? Click on "**Entry Label Specifications**" to see a variety of sample labels for Faceting and Lapidary entries.

How to enter: Click on the blue bar labeled "**Enter by April 26**" to start the procedure. Have your credit card ready; each entry is \$10.

Schedule 2019

Entry deadline (online only)
Friday, April 26, 11:59pm

Entry delivery
Saturday and Sunday, May 25 and 26,
9am to 6pm

Opening day of Fair
Friday, May 31, 4pm

Exhibitors' Appreciation Night
Wednesday, June 5, 7 to 9pm

Last day of Fair
Thursday, July 4, 11am to 11pm

Exhibit pick-up
Saturday, July 6, 9am to 8pm

Calling demonstrators in silversmithing, rock carving, fossil prep and more:

Please contact **Jennifer Stapp** at **858-829-1723** or cat333@san.rr.com to schedule a shift, and to get your free ticket to the Fair.

Sand pile volunteers needed! Get in touch with **Jennifer** if you want to help kids screen for tumbled stones and pick out their favorite rock. Two hour shift, minimum = one free ticket.

Sphere making demos, weekends: **Paul Williams** knows all, pwilliams6@san.rr.com

Faceting demo, weekdays: **Bob Hancock** does the scheduling, rtourmaline2@aol.com

Questions about entering, displays, labels? Please call or email **Anne Schafer**. Thanks!



Newsy Nuggets

Stories you may have missed

Wulfenite is a rare lead molybdate mineral with the formula PbMoO_4 . It is a popular collectable mineral typically found as interesting prismatic, squarish, or thin tabular crystals ranging in color from bright orange-red to yellow-orange to brown. **Wulfenite** is named for Austrian mineralogist **Franz Xavier Von Wulfen**, who discovered it in 1785. Localities for fine quality specimens include Morocco, Namibia, Mexico, and the United States, notably, Arizona – some of the world's finest specimens have been found at the Red Cloud Mine in the Trigo Mountains, La Paz County. **Wulfenite** was designated the [state mineral of Arizona](#) in 2017 and is the mineral theme of the TGMS show at Tucson in 2019. [Read more about about Wulfenite in an article authored by Bob Jones for Rock & Gem magazine>>](#)



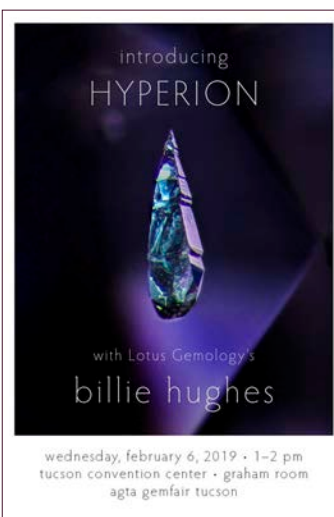
Speaking of the Tucson shows, if you've been kicking yourself for not picking up a copy of **Richard Hughes'** magnum opus, *Ruby & Sapphire: A Gemologist's Guide*, when you had the chance last year, well, you can stop kicking and start luxuriating in his 816 glossy page tome crammed full of useful information and stunning photographs – it is the be-all, end-all authoritative book on corundum. **Dick** will be at the convention center at the AGTA show (Table #61, mezzanine level) February 5-10. You'll save \$85. on shipping from Thailand and shave off an additional \$20.00

from the regular list price (\$200.). He'll also have a limited edition bundled set as a special offering featuring the aforementioned *Ruby & Sapphire: A Gemologist's Guide*, the classic Halford-Watkins Book of *Ruby & Sapphire*, and the Lotus Gemology **Guide to Color**. What's more, he is providing a while-you-wait verbal gem testing service for a modest fee. [Check out the details on the Lotus Gemology Facebook page>>](#)

And while you're in the neighborhood... on Wednesday, February 6th, from 1 to 2pm in the afternoon, gemologist **Billie Hughes** will make a presentation introducing Lotus Gemology's

Hyperion inclusion database. She will show how to use it and share some tips on microscopy techniques. You'll find **Billie** in the Graham Room at the Convention Center.

If you are unfamiliar with **Billie's** photographic work, you're in for a treat. Her photographs are quite simply breathtakingly beautiful. They have appeared in *Terra*



Spinel, the *Wall Street Journal*, *Ruby & Sapphire: A Collector's Guide*, and *Ruby & Sapphire: A Gemologist's Guide*. **Billie** is also a three-time winner of the Gem-A's annual photographic competition.

Monument update. One year after **President Trump's** executive order took effect



to downsize two Southern Utah national monuments, **Bears Ears (BSENM)** and **Grand Staircase-Escalante (GSENM)**, an unexpected turn has derailed one of its intended beneficiaries. Canadian-based **Glacier Lake Resources Inc.** has now abandoned plans announced last year to develop the **Colt Mesa** mining operation, which is located in an area covering about 200 acres excluded from **GSENM**. It is the site of a deposit of copper, cobalt, zinc, and nickel that was discovered in 1968 and was last commercially viable in the 1970s, prior to creation of the monument by **President Clinton** in 1996.

The **Trump** administration's intention behind reducing **Bears Ears** to 16% of its original size and cutting back **Grand Staircase-Escalante** to 45% was to open areas previously put off-limits to drilling and mining and allow claims to be made under the **General Mining Act of 1872**. Opponents to **Glacier Lake Resources'** plan (and others like it) cited the conflict with the tourism economy that has flourished in Southern Utah in recent decades.

Even as the monument rescissions and mining claims are being litigated in the courts, the project at **Colt Mesa** is not going forward under management by **Glacier Lake Resources**. According to recent reporting by *The Washington Post*, financial woes reflected in a March 2018 shareholders report are at the root of the company's decision to mothball its plans in Utah (as well as other sites in Canada).

Get ready, point, shoot. *Courtesy of Bob Hancock.* As the weather warms up, it will soon be time to get out into the outback and look for rocks and take photos. San Diego County offers a wide selection of places to study rock formations and wildlife. Keep your camera ready to shoot that special sunset or to shoot from the hip, with your camera of course, to get an unexpected photo of some wild critter.

Today, we made another trip out to Borrego Springs, in San Diego County. Coming back home the road climbs up over 4,000 feet on Montezuma Grade. Here we spotted several Big Horn Sheep which were



Grand Staircase-Escalante National Monument. Photo: BLM.



Above. Bighorn sheep look up from grazing to take stock of the paparazzi snapping their picture. **Below.** A ram pauses on a rocky ledge. Photos: Bob Hancock. January 2019.

coming down to a lower altitude to avoid the rain and cold at the higher levels. We stopped and took a few telephotos of the big guys.

Bighorn Sheep decimated by mystery illness. More than 20 dead sheep have been recovered from Southern California's desert regions since December. The deaths reflect an alarming spike in morbidity

suspected of being caused by pneumonia contracted from domestic sheep. Whatever is killing them, both lambs and mature individuals are succumbing without preference.

Small herds of fewer than 20 members normally stick to the isolation of their mountainous habitat. However, in 2013 carcasses were found on both sides of Interstate 40, indicating that at least one bighorn had crossed the highway, came into contact with domestic animals, and then became the vector of a pathogen that exposed the wild herd to fatal pneumonia. (See: <https://phys.org/news/2018-06-bighorn-sheep-interstate-california.html>) Exposure to respiratory diseases carried by non-native species of sheep or cattle can ravage indigenous populations, as they have no natural resistance. The current outbreak among the native Bighorns is affecting a herd of roughly 200 individuals whose habitat is the San Geronio Wilderness, which overlaps eastern San Bernardino County and northern Riverside County. According to **Jeffrey Villepique**, a wildlife biologist with California's **Dept. of Fish and Wildlife** and lead investigator into the phenomenon, the total count that has succumbed to the mysterious disease is probably much higher than the number of carcasses found to date. [Read the story in the *Desert Sun* >>](#)

Winter rains herald a riot of color coming to the desert. Confirming **Bob Hancock's** observations, field officers for the **BLM** and **National Park Service** report that spring blossoms are appearing in the desert landscape early this season. A superbloom year is not out of the question. Time to start thinking about planning some collecting field trips in February and March, when the desert will be showing off its resplendent beauty to best effect. Bring your camera.



Amboy Crater rises 250' above a desert floor carpeted by wildflowers. Photo: Bob Wick, BLM. March 15, 2017.

Looping back to where we started – Tucson.

We're sharing a notice from **Gary Bowersox**, who would like to connect with anyone attending the **Tucson Gem & Mineral Show** who is interested in participating in a **Gemstone Round Table**. If you are, email him ASAP at: MrGary77@aol.com.

The self-described "Gem Hunter" has four decades of experience exploring and researching the gems and minerals of Afghanistan and Central Asia. He has surveyed every emerald and ruby mine known in Afghanistan (through 2009).



Gary rests with Tajik miners during the ascent to the ruby mines high in the Pamir Mts. northeast of Murghab, 2013.



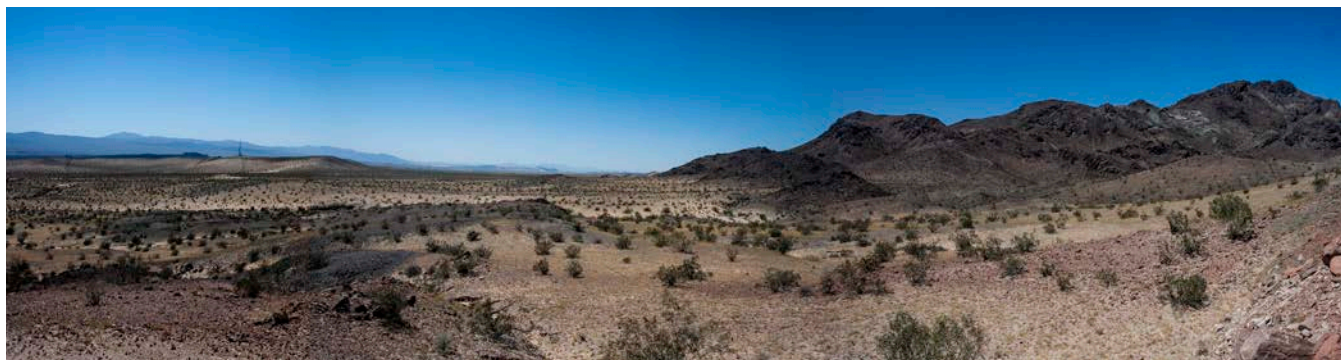
JUNIOR DIVISION

Coordinated by
Dave Smith

GREETINGS FROM THE JUNIORS. We have been busy working on our cabochons for the next **San Diego County Fair** display case. Each **Junior** has his or her own cabochon exhibit for their completed projects, and the goal is to fill the case by May 25th for the **Fair**.

At our next **Annual Barbeque** on May 4th, we'll have a selling table in support of the **Juniors' Field Trips** and their other needs. We'll also sponsor the last Society meeting of the year on Monday, May 27th, when you will hear an interesting talk, find plenty of door prizes and refreshments.

Our class meets on Saturdays from 10:00am to 1:00pm, and we welcome interested, energized rock-minded students from ages 10 through 17 years young. Lastly, thank you **Paul Williams** and **Elbert McCune** for assisting class every Saturday.



*Deserts of California, Part 2**

Why is the Mojave Desert such a great laboratory for the study of the geosciences?

*by Stephen P. Mulqueen**

THE MOJAVE DESERT is a vast region composed of an abundance of rock units containing complex mineral assemblages in an active tectonic setting. This allows the field observer to gather an abundance of scientific knowledge regarding all aspects of the geological sciences. There are many factors that contribute to the potential for geologic learning experiences while exploring the Mojave Desert.

Sparse Vegetative Cover. The arid climate in the Mojave Desert offers a sparse amount of precipitation for supporting plant life. Therefore, there is a general lack of vegetative cover. This condition allows the field observer to see changes in the soil cover, sharp contacts of adjoining rock units, faults, fractured rock units, and other geologic details that are often well exposed at the surface.

Lack of Thick Soils. Due to sparse vegetation, desert soils contain little organic matter. The thin soil leaves the natural rock units and complex geology well exposed. These factors allow the field observer to see more rock outcrops than soil cover.

* Part 1 appeared in *The Pegmatite*, January 2019.

Panoramic view of the Mojave Desert floor from the Sleeping Beauty collecting area in the South Cady Mts. Photo: Lisbet Thoresen. May 13, 2017.

Climate/Weather. The Mojave Desert offers the field observer about eight months of good to ideal climate and weather conditions. Climatic temperatures in the Mojave can vary from extremely cold to very hot. However, the fall, winter and spring seasons offer great weather and comfortable daytime temperatures that are ideal for fieldwork and camping. Occasional windy conditions can present an uncomfortable environment for the field observer.



A forest of Joshua Trees (*Yucca brevifolia*, a member of the Agave family) at sunrise, near Quail Mountain, Joshua Tree National Park. The habitat of this California native extends to the San Bernardino Mountains and Arizona's Sonoran Desert. It is slow-growing and has an estimated average lifespan of 150 years; although, some scientists think some of the trees in the park are much older. Photo: NPS/Brad Sutton. September 15, 2015.

Stephen P. Mulqueen is a retired geologist and rockhound enthusiast who has researched and written about the Mojave Desert for many years. He graduated from Cal Poly Pomona in 1978. He is an active member and past president of the Ventura Gem & Mineral Society. He currently resides in St. George, Utah.

Unobstructed Visibility. The Mojave offers unobstructed views of the surrounding terrain. Binoculars are useful tools for observing geologic features from a distance of several miles. This clear view of the desert from great distances offers the field observer a unique view of the geology and lithology (rock types) just beyond his or her location. This acts as a “preview” for scientists who are exploring the desert. The unobstructed visibility from a moderately high elevation presents spectacular vistas and fantastic panoramic views. The U.S. Armed Forces recognize the Mojave as a fantastic training ground for pilots and ground-based military personnel due to its open airspace, relatively good climate, and excellent visibility on more than 340 days per year.



Turquoise pseudomorph (1.1 x 0.8 x 0.6 cm), from Apache Canyon Mines, Turquoise Mountain, San Bernadino Co., California. Photo and specimen courtesy of Marin Mineral Company, www.marinmineral.com.

Historic Mining Districts. Some of the earliest mining activity in the Mojave Desert occurred several thousand years ago when Native Americans excavated for turquoise and other minerals that were desirable for jewelry, arrowheads, spear points, and tools. One of the oldest mines in the Mojave is the Toltec turquoise mine, located in the East Mojave, northeast of Halloran Springs, California. Some historians estimate that the early excavations at the Toltec date back to the end of the last Ice Age, approximately 12,000 years ago. This conclusion is based upon the discovery of early excavation tools that were fashioned from the bones of large Pleistocene mammals within partially backfilled pits at Turquoise Mountain. These and other early discoveries resulted in the mining of complex deposits containing minerals, rocks, and

metallic ores. These early excavations have contributed to the studies of the geological sciences by providing great exposures, without the cover of soils, that are unaffected by weathering. Mines, both surface and underground, offer great learning experiences for geology students. They also offer well-exposed rock and mineral assemblages for rockhounds, research geologists, and prospectors.

Undeveloped Open Space. The Mojave Desert consists of 47,877 square miles of land, the vast majority of which is not covered by houses, buildings, shopping centers, paved roads, parking lots, lawns or gardens. This vast open space offers great views of geologic features without man-made obstructions.

Access. The complex network of dirt roads in the Mojave Desert offers access to remote sites for those who are in search of unusual geologic features. Some of the old roads have been closed because they cross wilderness boundaries, military reservations, mining properties, or other lands with private legal entitlements. However, there still remains a vast array of roads and trails that allow access to many remote regions.

Well-Studied Geologic Features. The Mojave Desert is in close proximity to colleges and universities that offer field studies in the geological sciences. Many of the important and unusual geologic features in the Mojave have been studied by geology students and



Amboy Crater is a 250-ft. high extinct cinder cone located just off of historic Route 66 between Barstow and Needles – the area was bypassed by Interstate 40 in the early 1970s. There is a breach on the west side of the crater where basaltic lava poured out over a vast area. Beyond the crater lies 24 square miles of lava flow and other distinctive features such as lava lakes, collapsed lava tubes and sinks, and spatter cones. Source: BLM. Photo: Bob Wick, BLM. February 15, 2014.

geologists. The locations of these features have been shared with other college and university professors. Word of the unusual geologic exposures has been conveyed through the dissemination of professional articles and published reports, field trips, and lectures. Therefore, the Mojave Desert has been well explored and shown to have great examples of un-usual geologic features. The Mojave contains at least one illustration of each of the geologic principals described in most standard geology textbooks.

Rock Clubs. The Mojave is also in close proximity to large populations of people, including members of mineral clubs. The California Federation of Mineralogical Societies (CFMS) comprises 125 societies within Arizona, California and Nevada. Many of these societies are located in cities within a reasonable distance of the Mojave Desert. They have shared the locations of some of their favorite collecting sites for rocks and minerals with fellow rockhounds and prospectors. This shared data has enhanced the overall knowledge of the locations of deposits containing unusual rock and mineral specimens.

Conclusion. The Mojave Desert is a huge “exhibit case” containing unusual rocks, minerals and fossils. It offers great lessons for those who are studying complex geologic concepts. This desert region is a world-renowned laboratory for the understanding of the geological sciences. The Mojave continues to

be a great area for rockhounding, offering collectors opportunities to discover fantastic specimens of rocks, minerals and fossils. What appears to be a large wasteland to the casual observer is actually a vast storehouse of unbelievable mineral riches just waiting to be discovered.

Selected References.

- Feller, Walter, Ed. Halloran Springs Turquoise Mines. Desert Gazette. [n.d.] Available online at: <http://mojavedesert.net/desert-fever/halloran-turquoise.html>.
- Hensher, Alan. 2005. The historical mining towns of the eastern Mojave Desert. In: R.E. Reynolds (ed.), Old Ores: Mining History in the Eastern Mojave Desert. The 2005 Desert Symposium. Fullerton: California State University, Desert Studies Consortium and LSA Associates, Inc., pp. 28-40. Available online at: <http://nsm.fullerton.edu/dsc/images/DSCdocs/2005oldores.pdf>
- Leonard, N. Nelson III and Christopher E. Drover. 1980. Prehistoric Turquoise Mining in the Halloran Springs District, San Bernardino County, California. Journal of California and Great Basin Anthropology Vol. 2, No. 2: 245-256. Available online at: <https://escholarship.org/uc/item/05c3s37g>
- Mindat.org and the Hudson Institute of Mineralogy, Eds. [n.d.] Turquoise Mountain, Halloran Springs District San Bernardino Co., California, USA. Available online at: <https://www.mindat.org/loc-209434.html>
- . [n.d.] Toltec Mine, Yucca Grove, Halloran Springs District, San Bernardino Co., California, USA. Available online at: <https://www.mindat.org/loc-91035.html>
- Reynolds, Robert E. 2005. Halloran turquoise: a thousand years of mining history. In: R. E. Reynolds (ed.), Old Ores: Mining History in the Eastern Mojave Desert. The 2005 Desert Symposium. Fullerton: California State University, Desert Studies Consortium and LSA Associates, Inc., pp. 63-67. Available online at: <http://nsm.fullerton.edu/dsc/images/DSCdocs/2005oldores.pdf>
- Vredenburg, Larry M. 1996. History of Mining in the Halloran Hills, Shadow Mountains, and Silurian Hills. Available online at: http://vredenburg.org/mining_history/pages/silurian-shadow-mts-halloran-sprs%20.html

The present article is the last in a series of five articles published in *Rockhound Rambling*, the official bulletin of the Ventura Gem & Mineral Society. The third and fourth articles of the series were re-published in *The Pegmatite* in October 2018 and January 2019, respectively. The present article covers a sub-topic that is completed by the preceding fourth and the current fifth and final article of the series.

The present article is reproduced here by permission of the author and courtesy of VGMS; it originally appeared in *Rockhound Rambling* Vol. 65, No. 1 Jan 2019: 14–15.

Cite this article: S.P. Mulqueen. Deserts of California. The Pegmatite, bulletin of the San Diego Mineral & Gem Society, Inc. February 2019: 10–11.

TUCSON Gem Show Schedule 2019 January 31st thru February 17th

jogsshow.com/tucson-gem-show-schedule



*Alphabetical Listing of all Tucson Shows
January through February*
www.tucsongemshows.net/coming.html

and at:

**Gem, Mineral & Fossil Showcase:
Join The World's Largest Treasure Hunt
February 2–17, 2019**

Website: www.visittucson.org

For detailed listings of all the dealers, venues, and show dates, search the schedule at the show website and/or vendor websites.



“THE MAIN SHOW”

February 14–17, 2018

65th Annual Tucson Gem & Mineral Show “Wulfenite is Love”

Sponsor: Tucson Gem & Mineral Society

Venue: SMG-Tucson Convention Center,
260 South Church Avenue, Tucson, AZ 85701

Hours: Thu thru Sat 10:00am – 6:00pm, Sun
10:00am – 5:00pm.

Tickets. Available starting January 16th.

Website: www.tgms.org/show/

The largest, oldest and most prestigious gem and mineral show in the world, featuring 250+ dealers. This year's mineral theme is the Arizona State Mineral – Wulfenite.

JOHN E. GARSOW gems & minerals

**January 31 – February 15
Arizona Mineral & Fossil Show**
The Hotel Tucson City Center – **Room #118**
(formerly The Inn Suites)
475 N. Granada, Tucson AZ
10am – 6pm Daily
Facet Rough • Cabbing Rough
Jewelry • Mineral Specimens
www.johngarsow.com

Visit us at the annual Tucson Gem and Mineral Society show - Aisle 800
DO NOT MISS THIS SHOW!!!
The displays will be breathtaking....

And we love this wulfenite!!!! A beautiful old time specimen from a private collection.....

Size: 9cm x 6cm
PM for price upon request

© Albert Rums

kristalle.com

TUCSON - selected shows

JANUARY–FEBRUARY

31–17 Kino Gem & Fossil Show

Where: Kino Sports Complex
2500 E. Ajo Way, Tucson, AZ 85702 (E. Ajo
Way between Kino Pkwy. & Country Club Rd.)
Hours: 10:00am – 6:00pm daily, except Feb
17, closes at 4:00pm.
Admission and Parking: Acres of free
parking, free shuttle service; handicap accessible.
Contact: info@as-shows.com
Website: www.as-shows.com
Over 200 vendors of gems, minerals, fossils,
beads, findings, jewelry, and one-of-a-kind
specimens, as well as lapidary equipment,
supplies and tools.

**31–17 Tucson 22nd Street Mineral & Fossil Show
(Eons Expos)**

Where: 600 West 22nd Street at corner of I-10
& 22nd Street
Hours: 9:00am – 6:00pm daily
Admission: Free.
Parking: \$3.00 weekdays, \$5.00 weekends
Website: www.22ndstreetshow.com
Wholesale and retail, 220 dealers, plus food
vendors, handicapped accessible.

1–13 Pueblo & Mineral Show

Where: Riverpark Inn, 777 W Cushing Street,
Tucson, Arizona 85745
Hours: 10:00am – 6:30pm daily
Parking: Onsite and valet.
Contact: info@pueblogemshow.com
or 310-586-6816.
Website: www.pueblogemshow.com
Expect exceptional and unique offerings from
all seven continents. With its international
exhibitors, heavy buyer traffic, and multiple
venues, this Tucson gem and mineral show
attracts award-winning designers of one-
of-a-kind jewelry, cut and rough gemstones,
natural fine minerals and fossil specimens at
many price points. For more than 35 years, the
Pueblo Show has maintained its status as one
of the premier gem and mineral showcases in
Arizona and continues to grow.

1–17 Rapa River Gem & Mineral Show

Where: 292 S. Freeway Ave.
(S. Freeway Ave. between Congress St. & Starr
Pass Blvd.) Tucons AZ 85713
Hours: 9:00am – 6:00pm daily
Admission and Parking: Shuttle service;
handicap accessible.
Contact: Lynn Arriaga at 520-256-2079 or
Tyo Leonard at 480-593-3439;
or rapagem@yahoo.com
Website: www.rapariver.com/start.php
If you can't find it here you won't find it
anywhere. Rapa River dealers offer a wide
variety of many unique and unusual products
from all parts of various countries represented
by 34 vendors.

2–16 Arizona Mineral & Fossil Show

Hours: 10:00am – 6:00pm daily, except Sat,
Feb. 16, 10:00am – 5:00pm
Admission and Parking: Public welcome, free.
Sponsor: LLD Productions Inc
Contact: mineralshowslld@gmail.com
Website: www.mzexpos.com
Hundreds of Dealers, Fossil Hall, Meteorite
Dealers, Minerals, Gems and Jewelry. Artists
Gallery and Art in Stone display. Room and
tent dealers set their own schedules. If there
is a particular dealer you want to see, contact
them in advance.

– Three locations –

(1): Hotel Tucson City Center

(formerly InnSuites Hotel)
475 N. Granada Ave. Tucson, AZ 85701
(St. Mary's Rd and Granada Ave.)

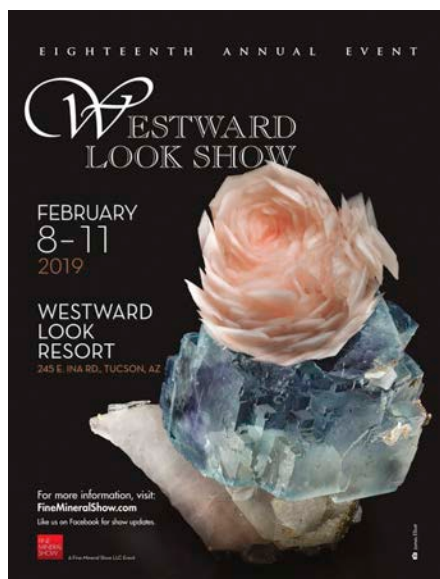
Ballrooms open Jan. 25 - Feb. 7

(2): Mineral & Fossil Marketplace

1330 N. Oracle Rd. Tucson, AZ 85705
in cooperation with Adam
Aaronson Properties LLC,
mineralfossilmarketplace@gmail.com

(3): Fossil & Mineral Alley

Ramada Limited
665 N. Freeway, Tucson, AZ 85745
in cooperation with Himada Expositions
LLC, mitulpatel80@gmail.com



Tucson Fine Mineral Show

February 8–11, 2019

Westward Look Resort
245 E. Ina Rd, Tucson, AZ 85704

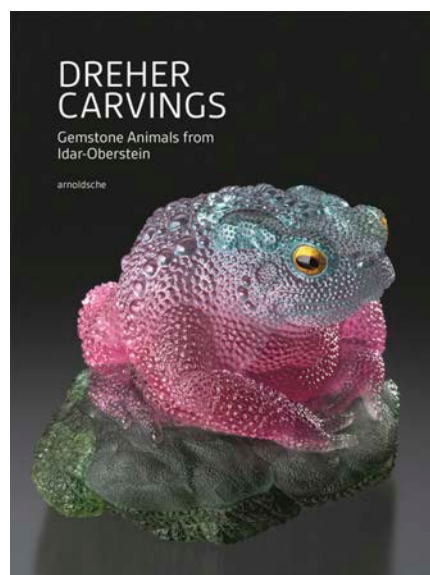
Hours: 10:00am – 6:00pm, except on the final day,
10:00am – 5:00pm

Admission and Parking: Free.

Contact: info@finemineralshow.com

Website: finemineralshow.com

THE WESTWARD LOOK RESORT is located in the foothills of the Catalina Mountains overlooking the city of Tucson. Thirty-nine world-class dealers gather every year at this famous resort to showcase some of the most exceptional mineral specimens found anywhere in the world.



Sunday Evening Program

Guest Speaker: Patrick Dreher

Westward Look Resort
Sonoran Ballroom
February 10, 2019
6:30 pm - 8:30 pm MST

Each year the Sunday Evening Program features a presentation on a mineral topic related to the interest or expertise of a very special guest speaker. This year, German master gem carver Patrick Dreher, whose family members are world-renowned for their virtuosity at producing lapidary art inspired by nature, will make a presentation on: “Dreher Carvings – The 5-generation Dynasty from Idar-Oberstein.”

Westward Look Show Dealers

Alain Martaud Minerals

Alpine Minerals

Anton Watzl Minerals

The Arkenstone

Ausrox

Bergmann Minerals

Collector's Edge Minerals

Cornerstone Minerals

Cristalli

Crystal Classics Fine Minerals

Dave Bunk Minerals

Dreherdt

Earth's Treasures

eShop Minerals

Exceptional Minerals

Fine Minerals International

Gobin

[Graeber & Himes](#)

Green Mountain Minerals

[Kristalle](#)

Marcus Budil Fine Minerals

[Mineral Classics](#) – Brian Kosnar

Mineral Décor

Mineral Masterpiece

Mineral Movies

Miner's Lunchbox

Mintang

Nicholas Stolowitz Fine Minerals

[Pala International](#)

Pinnacle 5 Minerals

Rock Acquisition Group

Saphira Minerals – Rudolf Watzl

Stonetrust

The Sunnywood Collection

Superb Minerals India

Unique Minerals – Evan A. Jones

Weinrich Minerals

Wendel Minerals

[Wilensky Fine Minerals](#)

ON THE GO ... TO A SHOW



FEBRUARY

1–3 FALLBROOK, CA – 54th Annual Pacific Micromount Conference

Presented by: Mineralogical Society of Southern California

Registration: \$15.00 in advance by mail; \$20.00 at the door

Venue: Fallbrook Gem & Mineral Museum
123 W. Alvarado St., Fallbrook, CA 92028

Web: www.mineralsocal.org/wp-content-uploads-2019-01-2019-pmc-pdf/

Program and registration form online:
www.mineralsocal.org/wp-content-uploads-2019-01-2019-pmc-pdf/

Activities include contributed talks and mineral photos, microscope time, sales and giveaway tables, a Silent Auction, a Verbal Auction, and featured presentations.

Friday presentation: Michael Cox and Ted Hadley – McDermitt Mine Update: Geology, Microminerals, and Fun.”

Saturday presentations: Paul Adams – “The Copper World and Mohawk Mines, San Bernardino County, CA”; Robert Housley – “The use of Raman Spectroscopy in identifying new and rare secondary tellurium minerals.”

Sunday field trip. TBD by vote of planned participants: Lead Mountain, The Blue Bell Mine, or the Bagdad-Chase Mine to be selected. (No extra fee.)

15–24 INDIO, CA – San Geronio Mineral & Gem Society Annual Show

Venue: Riverside County Fair & National Date Festival

82-503 Hwy 111, Indio, CA 92201

Gem & Mineral Building

Contact: Bert Grisham, 951-849-1674
or bert67@verizon.net



80th Annual CFMS Show & Convention hosted by Pasadena Lapidary Society

March 8 – 10, 2019

(registration deadline Feb 25, 2019)

Pomona Fairplex, Bldg. 6

1101 W McKinley Ave, Pomona, CA 91768

Fri & Sat 10am – 5pm, Sun 10am – 4pm

Contact: Marcia Goetz at 626-260-7239
or showdealers@pasadenalapidary.org

pasadenalapidary.org/2019-show/

Admission

1-day ticket/3-day pass – Adult \$5./\$12.

Senior (60+), Active Military, Juniors (12–17) \$4./\$10.

Advance registration is available for 1-day tickets and required for 3-day passes. **Registration form is due with payment by February 25, 2019.**

Saturday, March 9 – Banquet at DoubleTree Inn, Claremont, CA. Ticket: \$38.50 (see registration form for details).

Registration form

(short URL): <https://goo.gl/8kvnpx>

Camp Zzyzx

March 24–31, 2019



Applications are now being accepted
through March 1, 2019

Download an application form at:
www.cfmsinc.org/ESStudies/2019_ZzyzxRegistration.pdf

Classes may include:

- Lapidary
- Beading
- Wire Art
- Advanced Wire Art
- Precious Metal
- Clay
- Soft Stone Carving
- Faceting
- Alternative Casting
- Field Trips

(Each Camp is unique, offering a variety
of lapidary arts and crafts classes.)

Contact for more information:

Audrey Harvey, Camp Zzyzx Registrar
805-427-2447 or audreyclaygirl@gmail.com

SAVE THE DATE!

March 8, 2019, 7:30pm

General Meeting of the Mineralogical Society of Southern California (MSSC)

Guest speaker: Stephen P. Mulqueen
The Golden Age of Rockhounding, 1946 – 1972

Where: Pasadena City College
Building E, Lecture Hall (room 220)
1570 E. Colorado Boulevard
Pasadena, CA 91106

Admission and Parking: Free. Guests are
welcome.

Website: www.mineralsocal.org



MARCH

2–3 VENTURA, CA – Gem, Mineral, Fossil & Lapidary Show

Presented by: Ventura Gem & Mineral Society

Venue: Ventura County Fairgrounds
10 W. Harbor Blvd, Ventura, CA 93001

Hours: Sat 10am – 5pm, Sun 10am – 4pm
Admission: Free

Parking: Fairground charges parking fee.

Web: vgms.org/category/gem-show/

Exhibits, dealers, kid's activities, silent auctions,
raffles, plant sales and a rummage sale).

8–10 VICTORVILLE, CA – Stoddard Wells Tailgate

Sponsor: Victorville Valley Gem & Mineral Society

Venue: Hwy 15 / Stoddard Wells Road
(Stoddard Wells Road off Dale Evans Pkwy)

Hours: 9:00am – 5:00pm

Contact: Brett Ward or Sandy Skidmore,
760-617-6001 or info@vvgmc.org

Web: vvgmc.org/tailgate.html

Handcrafted & Faceted Jewelry, Slabs and Cabs,
Findings & Equipment, Minerals & Fossils and
TONS of Rough Material.

Field Trip: Tri-colored Marble on March 9, 9am

30–31 TORRANCE, CA – Annual Gem & Mineral Show – “Nature’s Treasures”

South Bay Lapidary & Mineral Society

Venue: Ken Miller Recreation Center
3341 Torrance Blvd (entrance on Madrona)

Hours: Sat 10:00am – 5:00pm;
Sun 10:00am – 4:00pm

Admission and Parking: Free.

Web: southbaylapidaryandmineralsociety.com



KRISTALLE

Est. 1971

Wayne and Dona Leicht

WE ARE CASH BUYERS FOR SINGLE SPECIMENS AND ENTIRE COLLECTIONS!

875 North Pacific Coast Highway - Laguna Beach, CA 92651

949.494.5155 - fax: 949.494.0402

e-mail: info@kristalle.com

SDMG BOARD MEETING HIGHLIGHTS

January 21, 2019

In attendance: President Jim Parrish and Board members Andy Anderson, Donna Beers, Rocio Bergum, Donna Casey, Stephanie Griffin, Bob Hancock, John Kruzel, Wayne Moorhead, Melissa Ordway, Ellen Riceman, Anne Schafer, Dave Smith, Jennifer Stapp, Paul Williams and Jill Williamson. A quorum was present. **Excused:** Doug Peeler, Lois Lukasky, Sally Parrish and Dee Smith. **Guests:** Alan Bergum, Letty Evans and Mark Kantas.

Membership: Current total is 683 members.

Mineral Division: After the Tucson show is over, Jim Parrish to meet with Lauren Nenow to discuss the Mineral Division Chair position.

Juniors: Dave Smith reported Junior class attendance at 5 for first week back after break, and at 14 the second week. Elbert McCune and Paul Williams are helping, but 14 is close to the maximum attendance. Juniors received donation of Diamond Mining in Arkansas program. Potential Juniors' spring field trip: Himalaya (Lake Henshaw), or the Eagle Mine (Julian).

School Director: Wayne Moorhead reported that Mike Harkleroad installed the acoustic curtain between the Cab and Casting Rooms. Facetron heads and dops are in the Faceting classroom. Weds. morning and evening cab classes are nearly full. Jim Claypool is out with a detached retina; Randy Welborn and Itziar Parramon are filling in for him. Wayne announced that Village Silversmiths is not to send new members to classes; new students are to contact Wayne via the website and he will assign them to classes, as classes are available. Sphere class is nearly full.

School Liaison: Bob Hancock accepted one new student into Weds. morning faceting class. Weds. morning and afternoon faceting classes are full.

Librarian: Donna Beers reported the SDMG Library will be open on Tuesdays, from 2-4 pm, and on Thursdays, 4-6 pm (except for the first two weeks in February).

Donations: Audrey Potterton's son Wesley donated a partial set of *The Mineralogical Record* to the Society.

Outreach: Anne Schafer to provide additional copies of outreach/tour forms for sign-in book.

Historian/Friendship: Jim Parrish to send copy of membership database to Stephanie Griffin so she may mail out cards/contact members.

Christmas Potluck: Attendance was about 130. Everyone enjoyed good food, a good silent auction and had a good time. Date for 2019: Monday, Dec. 16th.

Banquet: Jennifer Stapp reported that the speaker has written a book about CAD and will provide one copy as a door prize. Jim Parrish to provide contact info for PA system & projector rental to Jennifer. Plan to keep ticket price about the same. Short ribs will replace chicken on the menu. Motion carried, 13-1-1, to provide two \$1,000 scholarships to SDSU students selected.

December Nights: Jim Parrish reported that the event was very successful.

Gem Diego Show: Jim Parrish visited the Elks Club, found it to be too small. Bob Hancock visited Scottish Rite; rental rate and costs under consideration. If a show were held there, the usual date not available for 2019. Anne Schafer has floorplan for the 1995 show, with approx. 25 dealers and 50 exhibits. John Kruzel reported the Lakeside Community Center is eager to host our show; venue size is unknown.

Unfinished Business: Jim Parrish obtained one quote for exterior building signs, needs another.

(Any member may attend Board meetings. The next one is February 18, 2019, at 7 pm in the SDMG Building.)

West Coast Gem & Mineral Show

May 10 - 12, 2019

NEW LOCATION!

Hilton Orange County

3050 Bristol St., Costa Mesa, CA 92626



*Neptunite, San Benito Co, CA
Photo by Jeff Scoville
Martin Zinn Collection*

FREE Admission
Parking \$10/day
OPEN to the Public

75 Select Retail & Wholesale Dealers
Minerals ♦ Fossils ♦ Gems ♦
Jewelry ♦ Lapidary ♦ Home Decor

See our website for directions

www.MineralShowsLLD.com



San Diego Mineral & Gem Society, Inc.

A Non-Profit Educational and Scientific Organization

Membership Information:

Interested in minerals, fossils, lapidary, gems, or handcrafted jewelry? We are, too!

There are now two ways to apply for or renew your membership –

1.) Send a check with your membership form to the membership secretary. The renewal form can be found at the **Village Silversmiths Shop** in the **SDMG** Building the **SDMG** website at:

www.sdmg.org/sdmg-public/pdf/sdmg-membership-app-and-renewal.pdf

Mail your completed application and check to:

San Diego Mineral & Gem Society
attn: Angela Cannon
P.O. Box 710783, Santee, CA 92072

MAKE CHECKS PAYABLE TO:

San Diego Mineral and Gem

Please allow up to 3 weeks
for processing your application

◇◇◇◇◇◇◇◇◇◇ **OR** ◇◇◇◇◇◇◇◇◇◇

2.) Sign up online using major credit cards via PayPal. Visit the SDMG website for details at:

www.sdmg.org/sdmg-membership/

Pay with mailed check: \$30 – first Adult Member

OR – Pay using PayPal: \$32 – first Adult Member

\$10 – Associate Adult Member at same household

\$10 – Junior Member

\$10 – printed/mailed copy of *The Pegmatite* bulletin

Subscribe yourself to the eNewsletter at: <https://goo.gl/KZqPsc>

published from September thru June
at the same time as *The Pegmatite* bulletin
(PDF online version)

**Members, you must subscribe yourself,
we cannot do it for you!**

Got questions? Email the SDMG Membership secretary at: membership@sdmg.org

CLASSIFIED ADS

OCEANVIEW MINE TOUR & SCREENING TRIPS:

Sundays, 11:00am to 3:00pm

For more information
please visit www.digforgems.com

or call Jeff Swanger at 760-415-9143

Reservations required.

\$75. Adults \$60. Children (ages 5 to 11)

Family rates available.

HIMALAYA MINE TAILINGS:

Thursday-Monday, 10:00 am to 3:00 pm.

At the Lake Henshaw Resort on Highway 76.

Adults, \$75 per day. Kids 12-15, half price.

Screening tables, buckets, and shovels provided.

Call (775) 830-5797

or (775) 772-7724 for more info

Website:

www.highdesertgemsandminerals.com/

WEBSITES

SDMG:

www.sdmg.org

CFMS:

www.cfmsinc.org

AFMS:

www.amfed.org

PUBLIC LANDS:

www.amlands.org

BLM:

www.ca.blm.gov

BOB'S ROCK SHOP:

www.rockhounds.com

ROCKHOUND FORUM:

groups.yahoo.com/neo/groups/la-rocks/info



CLASS SCHEDULE – 2019

REGISTRATION IS REQUIRED BEFORE ALL CLASSES.

Email school@sdmg.org for class availability before attending any class to find out when the class starts and ends, if special materials are required and whether you qualify to attend. Fee is \$5.00 per class; it is usually easier for instructors if payment is made for a full month; cash or checks only, please. **Classes are open to members only** and students must read and follow the **School Rules** available in the classroom and at:

<http://www.sdmg.org/class-schedule/school-rules.pdf>

CABOCHONS	Tue	6 – 9pm	Tom Schmidt
	Wed	9 – 11:30am	Jim Claypool
	Wed	6 – 9pm	Nita Sani
	Thu	7 – 9pm	Jon Evans
FACETING	Tue	noon – 3pm	Elbert McCune
	Tue	7 – 9pm	Jerod Schneider
	Wed	9am – noon	Bob Hancock
	Wed	noon – 3pm	Donna Beers
	Wed	7 – 9pm	Elbert McCune
	Thu	7 – 9pm	Bill Brisebois
BEG. METALS FABRICATION	Tue	9am – noon	Jill Williamson
	Tue	noon – 3pm	Jill Williamson
	Wed	6 – 9pm	Stephanie Griffin
	Thu	9am – noon	Denny Turner
	Thu	1 – 4pm	Denny Turner
ADV. METALS FABRICATION	Tue	7 – 9pm	Al Puente
	Wed	9am – 3pm	Denny Turner
	Wed	9am – 3pm	Jackie Leverone
	Thu	7 – 9pm	Ellen Riceman
	Fri	9:30am – noon	Jill Williamson
	Fri	12:30 – 3:00pm	Jill Williamson
CASTING	Mon	1:30 – 7:00pm	Rocio Bergum
	Tue	9am – 2pm	Dave Smith
	Fri	5 – 7pm	Rich Yarbrough
STONE SETTING	Mon	by appointment	Miguel Asmar
ROCK CARVING	Mon	9am – 1pm	Jan Kunsu
SPHERE MAKING	Sat	1 – 3:30pm	Paul Williams
JUNIORS	Sat	10am – 1pm	Dave Smith

Thomas M. Schneider Quality Gemstones



861 6th Avenue, Suite 517

San Diego, CA 92101

www.tmsgems.com

Ph: 619-232-2624

Fax: 619-232-2213

ELEVENTH ANNUAL
SINKANKAS SYMPOSIUM
RUBY



April 6, 2013 - Carlsbad, California

TWELFTH ANNUAL
SINKANKAS SYMPOSIUM
PERIDOT
& UNCOMMON GREEN GEM MINERALS



THIRTEENTH ANNUAL
SINKANKAS SYMPOSIUM
OPAL



FOURTEENTH ANNUAL
SINKANKAS SYMPOSIUM
SAPPHIRE



FIFTEENTH ANNUAL
SINKANKAS SYMPOSIUM
TANZANITE AND TSAVORITE



THE ANNUAL SINKANKAS SYMPOSIUM – PEARL
Saturday April 27, 2019, Carlsbad, CA

www.sinkankassymposium.net

**“The best gem mineral symposium
in North America.”**
– John Koivula

AL'S OPAL IMPORTS & LAPIDARY

**3684 Fairmount Avenue
San Diego, CA 92105**

619 282-1700

Al Ramirez, proprietor
U.S. Navy WWII South Pacific veteran

Unmounted Australian and African Opals

- Lapidary equipment new or used
- Tumblers, diamond blades, belts and grits
- Rough rock for faceting, slabbing or tumbling
 - Recycle your gold or silver jewelry into new designs or repair
- A variety of finished jewelry in silver or gold
 - Faceting gemstones

All work done on premises

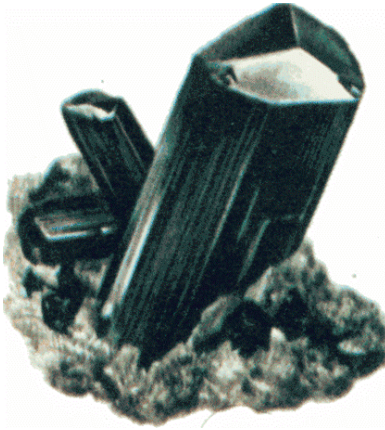
Layaway Available



HOURS:

**Monday thru Friday
8:30am to 3:30pm**

**Saturday
9:00am to 1:00pm**



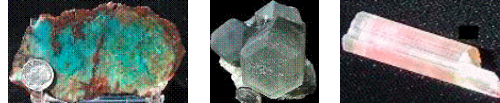
MinersGallery.com

Rock Slabs, Bulk rock, Crystals, Jewelry,
Fossils, Gems and Petrified Wood.

Phone: (619) 445-0800

richard@minersgallery.com

www.minersgallery.com



Minerals and crystals from around the world

*** ROCKS * MINERALS * GEMS * JEWELRY MAKINGS ***

*** LARGEST INVENTORY ***

*** * BEST QUALITY * ***

*** LOWEST PRICES ***

*** NEW ARRIVALS DAILY ***

SOUTH AMERICAN IMPORTS

Direct Importers

2461 San Diego Ave. #104

San Diego, CA 92110

In Old Town, in Coyote Café Shopping Center

Tel: (619) 299-3877

OPEN EVERY DAY!

Village Silversmiths

**Bead Work
Jewelry
Slabs**

**1770 Village Place
Balboa Park
San Diego, CA 92010
619 239-8812**

**Carvings
Rocks
Cabs**



2620 West Main St. Barstow CA 92311

Our business is putting fun and pride
into your lapidary hobby or profession
by making the right tools for your needs

Astounding Selection of Minerals
& Fossils from Around the Globe



MINERS GEMS

Experts in Geology, Gemology & Paleontology

World Famous Gold Rush
Rock Shop & Mining Museum

Daily Mineral Panning and Geode Cutting

Educational Programs Available

In Old Town San Diego State Historic Park
2616 San Diego Avenue, San Diego CA 92110
619-688-1178

minersgemsandminerals@cox.net
www.minersgemsandminerals.com



San Diego Mineral & Gem Society, Inc.

A Non-Profit Educational and Scientific Organization

1770 Village Place, Balboa Park

San Diego, CA 92101-1651

www.sdmg.org

WELCOME!

The SDMG Building
is located
at the north end of
Spanish Village
in Balboa Park

SDMG Museum hours:
11:00am to 4:00pm

Get information
on classes, events,
field trips, reports,
reviews, slideshows
and more at:
www.sdmg.org

ADDRESS SERVICE REQUESTED



THE PEGMATITE – FEBRUARY 2019

Sun	Mon	Tue	Wed	Thu	Fri	Sat
27	28	29	30	31	1	2
3	4 GSSD General Mtg pm, SDMG bldg	5	6	7	8	9
10	11	12	13	14 TGMS main Show Tucson - begin	15	16
17 TGMS main Show Tucson - end	18 SDMG Board Mtg 7pm, SDMG bldg	19	20	21	22	23
24	25 SDMG General Mtg 7pm, SDMG bldg	26	27	28	1	2