



San Diego Mineral & Gem Society, Inc.  
A Non-Profit Educational and Scientific Organization

# THE PEGMATITE

## JUNE 2019



May 31st thru July 4th, 2019  
Del Mar Fairgrounds  
[see details pg. 5](#)

### **PALOMAR CLUB GEM & MINERAL SHOW**

June 29 & 30, 2019

California Center for the Arts  
Escondido, CA 92025

[see details pg. 18](#)

.....

### **BLM Field Tour (Friday) Desert Advisory Council Business Meeting (Saturday)**

June 28 & 29, 2019  
Barstow, CA

Agenda: Desert Preservation and  
Recreation Act of 2019  
[learn more pg. 9](#)

Official bulletin of the San Diego Mineral and Gem Society, Inc.

**Affiliations:** California Federation of Mineralogical Societies  
American Federation of Mineralogical Societies  
American Lands Access Association

**Sister Club:** Kingston Lapidary, Hull, England

**Publication:** *The Pegmatite* is published monthly (except July and August).

**Submission Deadline:** 3rd Tuesday of the month preceding next month's publication, unless otherwise indicated.

**Membership:** Anyone with an interest in minerals, fossils, lapidary, gems, or hand-crafted jewelry may join the Society.  
Contact: [membership@sdmg.org](mailto:membership@sdmg.org)

**Liability:** The San Diego Mineral & Gem Society, Inc., is not and cannot be held responsible and liable for personal injuries, for damage or loss of property at any meetings, field trips, classes, shows, or any event sponsored or recommended herein.

**Copyright:** ©2019 San Diego Mineral and Gem Society, Inc. Non-commercial reprint permission given, unless otherwise noted, provided proper credit is given.

**Street Address:** 1770 Village Place  
San Diego, CA 92101-1651

**Mailing Address:** P.O. Box 710783  
(membership apps) Santee, CA 92072  
attn: Angela Cannon

**Phone:** 619-239-8812

**Website:** [www.sdmg.org](http://www.sdmg.org)

**Editor:** Lisbet Thoresen, [editor@sdmg.org](mailto:editor@sdmg.org)

**Layout, Advertising:** [info@sdmg.org](mailto:info@sdmg.org)

**General Information:** [admin@sdmg.org](mailto:admin@sdmg.org)

**Change of Address:** [membership@sdmg.org](mailto:membership@sdmg.org)

**Exchange bulletins:** Send to the Society mailing address

The mission of the San Diego Mineral and Gem Society, Inc., is to disseminate knowledge of mineralogy and earth sciences; to encourage the study of these subjects; to conduct classes in mineralogy and lapidary arts; to conduct field trips for the collection and study of specimens; to encourage interest in mineralogy and lapidary arts among young people; and to procure and maintain a collection related to the earth sciences and lapidary arts.



## PRESIDENT'S MESSAGE

June 2019

by Jim Parrish

[sdmgpresident@sdmg.org](mailto:sdmgpresident@sdmg.org)



**D**ID YOU MAKE IT to the **Junior-sponsored General Meeting** in May? There were lots of door prizes and the speaker, **Gerry “Gem Guru” Alvarado**, did a great presentation on inclusions in gemstones and mineral specimens. He also donated some incredible door prizes.

We also enjoyed our **Annual SDMG Barbeque**. This has been an annual event as far back as I can remember. How many of you remember back to when it was held at **Josie Scripps’ “High Hope Ranch”** in North County? We used to cook a side of beef in a pit with oak collected up on Mt. Palomar.

Special thanks go out to **Barbeque** Chairman, **Mr. Doug Peeler**, and the many volunteers, you know who you are, who worked so hard to prep the silent auction material and help with the setup and cleanup afterward. You were all great. Without all of you, it just wouldn’t happen!

Don’t forget to visit the **San Diego County Fair** this month. Many of our members will be displaying their creations and collections in the Gems, Minerals and Jewelry Department. This is one of the finest county fair expositions in the U.S. Do not miss it! (See details on pg 5.)

Be sure to attend the **General Meeting** on Monday, June 24th. Read the write up on pg 3, and put the date on your calendar. Our society’s fiscal year ended May 31st, so this will be the last meeting until September.

I would like to thank everyone who supported me this last year, and thank you for the privilege of serving our great organization. We have so many great people I believe we will succeed for many years to come.

Of course, I must thank my wife, **Sally**, who not only supported me, but also helped with a lot of the little things.



**Middle:** The Juniors hosted the General Meeting on May 17th. A full house was in attendance. At the front of the room (from left to right): guest speaker Gerry “Gem Guru” Alvarado, Jim Parrish presides over the raffle drawing, Mike Harlow (looking down) assists. Photo: Sally Parrish.

**Bottom:** The Annual Barbeque was held on May 4th in Balboa Park. It was a sunny Saturday and there was a great turnout. Photo: Jim Parrish.

## SDMG General Meeting

### “Social Night”

**Monday, June 24, 2019**

Jim Parrish, President

7pm SDMG bldg

Public Welcome!

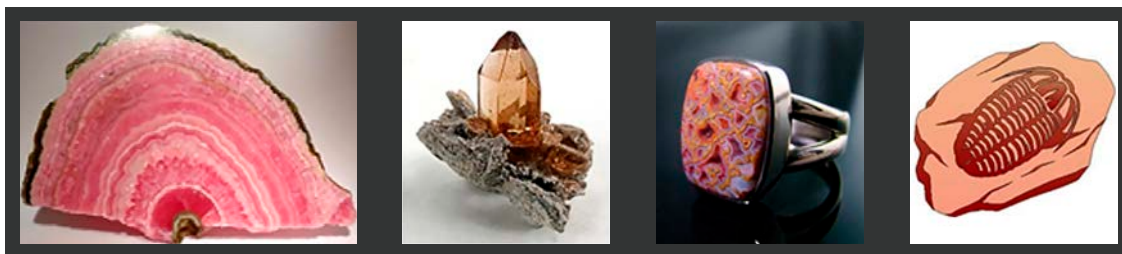


### *Silent Auction & Death by Chocolate*

**W**ELL, **THIS IS IT!** The last meeting before the summer break. This is your chance to buy something great while having a fun evening. Most important, you all need get there early, bring something desirable – lapidary material, minerals, gems, fossils, etc – to put in a big **Silent Auction**, and, of course, bring money. I will bring some good auction items! Will you?

You'll be able to bid while snacking on items made of chocolate. We've never done this one before! So, you all need to bring a favorite item made of chocolate. This is a challenge to all of you. Bite size is good. That way we'll be able to try more than one or two.

Join us! The Club will provide coffee, tea and punch.



## School News

*Wayne Moorhead, School Director*

**Current semester ends June 30th.** Most but not all instructors will have classes during the summer. Check the class schedule at the end of this bulletin for updates on summer classes.

Many classes currently have room to take a new student or two, so if you've had trouble getting into a class in the past, Email [school@sdmg.org](mailto:school@sdmg.org) to inquire and arrange a starting date.

**Summer classes start July 8th.** SDMG classes will take a holiday week off, from July 1–7, then summer classes will start on July 8. Most classes will continue throughout July and August as listed in the summer schedule, but check with your instructor to verify their summer plans.

### **San Diego County Fair. will be Ozsome.**

Everyone should visit the Gems, Minerals, Fossils, and Jewelry building during the County Fair in Del Mar. Come see all of our student's great work. The competition for the best cabochons was really fierce this year!

The Fair runs through July 4, and many of us enjoy helping kids screen for their free tumbled stone in the "sandbox." Sign up with Jennifer Stapp at [Cat333@san.rr.com](mailto:Cat333@san.rr.com) for a 2-hour sandbox shift, and you'll get a free ticket to the Fair for that day – what fun!

Have a great summer.





## JUNIOR DIVISION

Coordinated by  
Dave Smith

**T**HE JUNIORS HOSTED their annual **General Meeting** in May. It was well-attended and there were lots of yummy treats for everyone to enjoy. Our speaker was **Gerry “Gem Guru” Alvarado**, who gave a great presentation on “Inclusions.” It was an interesting topic and a fun evening. Thank you so much to the **Gem Guru** for helping to make our annual event a big success.

A big round of thanks also goes to everyone who supported the **Juniors** this year by donating some really great items for the raffle drawing. The proceeds go to the **Junior Division Fund**, which enables the **Juniors** to do special projects and activities throughout the year.



The Junior Division exhibit for the 2019 San Diego Fair is Ozsome!

If they didn't have enough to do to keep them busy in May, the **Juniors** were hard at work on their cabochon carvings for the forthcoming **San Diego County Fair**. This year's theme is an “Ozsome!” tribute to **Frank L. Baum's** classic book, *The Wizard of Oz*. The display case of the **Juniors'** work produced this past semester is terrific, professionally looking exhibit. It shows off their



*Top:* Thanks to the generosity of donors, including guest speaker Gerry Alvarado, the Juniors had terrific door prizes to raffle.

*Middle:* The audience waits for the winning raffle tickets to be called. Photo: Sally Parrish.

*Bottom:* Setting up the refreshments table. Photo: Sally Parrish.

creativity and skills, which have improved steadily in recent months. Every single **Junior** and their parents have good reason to be proud. Please be sure to visit the **Gems, Minerals & Jewelry Department** at the **Fair** this year (see more details on page 5.)



## SAN DIEGO COUNTY FAIR GEMS, MINERALS & JEWELRY DEPT.

*by Anne Schafer, Coordinator*

**B**Y MIDNIGHT on the entry deadline of April 26, it turned out that 138 gems, minerals, fossils, faceting, jewelry and lapidary enthusiasts had entered a total of 368 entries. That's the third largest number of entries, all-time, beating out last year's number of 365. Right around 40 of the exhibitors are members of **San Diego Mineral and Gem Society**. Thank you for supporting the **Gems & Minerals Dept.** again this year!

There will be lots of cases filled with spheres (some of which will fluoresce), "how to" educational exhibits, the always special Rock Feast, plenty of faceted gemstones, petrified wood and geodes, the **Mineral of the Year – Birthstone Minerals** entries, the **Fossil of the Year – "Ammonites"**, over 30 cabochons and a dozen carvings. Did I fail to mention jewelry? **"Wizard of Oz"**, the Fair theme category, has 20 entries; there are 20 pieces in **Constructed Jewelry w/stones** (Amateur). It's going to be another great year for Gems & Minerals at the Fair! Please come see for yourself.



### FAIR SCHEDULE 2019

- **Entry deadline:** Closed. Friday, April 26.
- **Deliver exhibits:** Saturday and Sunday, May 25 and 26, 9am to 6pm
- **Opening day of Fair:** Friday, May 31, 4 to 11pm
- **Fair closed:** All Mondays and Tuesday in June – June 3–4, 10–11, 17–18, 24–25.
- **Exhibitor Appreciation Night:** Wednesday, June 5, 7 to 9pm
- **Last day of Fair:** Thursday, July 4, 10am to 11pm
- **Pick up exhibits:** Saturday, July 6, 9am to 8pm

### New classes for 2019 in the Gems & Minerals Dept.

**Birthstone Minerals:** One or five specimens, your choice.

**Ammonites:** One fossil specimen, worldwide, any size.

**Trace Fossils:** One specimen, worldwide, any size. (Ex: footprint, trail, burrow, etc.).

**Gemstone Carving, Beginner:** Must be natural mineral material. Four entries allowed!

**Fair Theme Jewelry:** "Wonderful World of Oz", single piece.





## FACETING DEMONSTRATORS NEEDED AT THE FAIR

*by Bob Hancock*

Hello All,

The **San Diego Mineral & Gem Society** has successfully held faceting demonstrations each year at the **San Diego County Fair** for more than 20 years. Our aim is to continue holding demonstrations to exhibit our faceting skills and to help foster public relations, as well as to attract new members and interest in our society.

To accomplish our objectives and to maintain our good relationship with the fair and the public, we once again call on our volunteer demonstrators.

You do not need to be an accomplished faceter to demo at the fair. Someone will be on hand to help you get started. If you are a student and still working on your first stone, just bring what you have to the fair and continue working on it there. Bring your own visors, and a dopped stone. You will be using an UltraTec Faceting Machine or for those who prefer the Factron Faceting machine, we will be providing one for you. You will receive a free ticket to the fair on the day you sign up to demonstrate.

Your fair entry ticket may be picked up at the, "Will Call Booth," located on the left hand side of the main entrance to the fair. Volunteer times are 2–3 hours in length, then you may remain at the fair and enjoy the festivities until closing, if you so desire.

To Volunteer, see the sign-up sheets located in the Faceting Classroom, at the SDMG School Building. Call **Bob Hancock** at **619-889-6886** for additional information. We can use your help.

## Volunteer!

### Get a free ticket to the Fair!

**Gem I.D.** ~ If you are a current or past member of the Gemological Society, or have a degree in gemology, have we got a job for you! The refractometers and microscopes will be out each weekend during the Fair, waiting for YOU! Please contact **Jim Porter** at [gemologysd@gmail.com](mailto:gemologysd@gmail.com) to sign up.

**Faceting Demos** ~ If you would like to show off your faceting skills to the public (and you know how to run an Ultra Tec...), please contact **Bob Hancock** at [rtourmaline2@aol.com](mailto:rtourmaline2@aol.com) to sign up.

**Sand Pile** ~ You can help kids screen for rock treasures, talk about rocks and generally have a good time. **SDMG** will be assigned several days at the Fair. There are three shifts on each day, and each shift lasts two hours. Please contact Asst. Coordinator **Jennifer Stapp** to reserve your spot: [Cat333@san.rr.com](mailto:Cat333@san.rr.com)

**Other Demos** ~ Chain making, Fossil prep, Wax carving, Wire wrap, Bead stringing, and the list goes on. If you have a rock or gem related activity that does not involve an open flame, a hot oven or anything else that might endanger the fairgoer, please contact Asst. Coordinator **Jennifer Stapp** to schedule your time slot: [Cat333@san.rr.com](mailto:Cat333@san.rr.com)

**Remember: All volunteers will receive a free ticket to the Fair. Just pick it up at Will Call on the day you have signed up for.**

We look forward to seeing you  
at the 2019 San Diego County Fair!



## Need more Info?

Give these folks a jingle:

Coordinator Anne Schafer

**858-586-1637** or [Agate.Annie2@gmail.com](mailto:Agate.Annie2@gmail.com)

Assistant Coordinator Jennifer Stapp

**858-829-1723** or [Cat333@san.rr.com](mailto:Cat333@san.rr.com)

## SDMG Membership...

New Applications & Renewals for 2019–20

Due NOW

(Deadline is August 31, 2019)

Don't forget to send in your membership renewal form by the deadline. **SDMG** classes are open to members only, so don't put it off any longer! There are now two ways to apply for or renew your membership –

- 1.) Send a check with your membership form to the membership secretary. The renewal form can be found at the end of this bulletin or on the **SDMG** website at:

[www.sdmg.org/pdf/sdmg-membership-app-and-renewal.pdf](http://www.sdmg.org/pdf/sdmg-membership-app-and-renewal.pdf)

**OR**

- 2.) Sign up online using major credit cards via PayPal. Visit the SDMG website for details at:

[www.sdmg.org/sdmg-membership/](http://www.sdmg.org/sdmg-membership/)

.....

### Pay with mailed check:

\$30 – first Adult Member

### OR – Pay using PayPal:

\$32 – first Adult Member

\$10 – Associate Adult Member at same household

\$10 – Junior Member

\$10 – printed/mailed copy of *The Pegmatite* bulletin

**Subscribe yourself to the eNewsletter at:** <http://bit.ly/SDMG-news>

published from September thru June

at the same time as *The Pegmatite* bulletin (PDF online version)

(Members, you must subscribe yourself, we cannot do it for you!)

### SDMG-GSSD Library

SDMG Bldg.

Donna Beers

#### Hours:

Tuesdays 2–4pm

Wednesdays 9–11am and 1–3pm

*Reference use only, no lending.*

**Access the catalog online at:**

<https://cloud.collectorz.com/sdmgmerklib/books>

#### Who may use the Library?

Membership is not required to view the catalog, but only **SDMG or GSSD** members may come use the reference library.

## This 'n' That...

General Announcements

SDMG Board Meeting

Monday, June 17, 2019

7:00pm SDMG Building

## ***Forest Service disses Rockhounds***

### ***San Gabriel Mountains***

### ***Nat'l Monument Management Plan***

*June 1, 2019*

*by Lisbet Thoresen*

**T**HE US FOREST SERVICE has published the long-awaited management plan for the **San Gabriel Mountains National Monument (SGMNM)**. While the **Forest Service** may permit Rockhounding on public lands under management, especially where it has been allowed previously, the agency often chooses not to be accommodating. In recent years, the California **BLM** has shown more consideration for recreational activities such as hobby collecting, including in recently designated National Monuments under its administration, but the **Forest Service** is not following **BLM's** lead. Instead, it made a retrograde decision on **SGMNM**, citing the original language of the proclamation as one of the reasons to forbid it in the Final Plan. Hobby collecting for personal use is now officially, entirely, and permanently off limits:

“The Monument Proclamation withdrew all Monument lands from mining and surface mineral extraction. Because of this withdrawal, S57 is no longer applicable within the Monument such that no personal use collection of rock, fossils, and minerals is allowed.”  
(Appendix B. p. 41)

Members of the Rockhound community provided detailed input to the Forest Service during the comment period on the Draft Plan in 2016. **SDMG** and **CFMS** co-authored a letter (<http://bit.ly/SGMNM2016>) listing hobby collecting areas in the San Gabriel Mountains that should be preserved. It cited past accommodation of hobby collecting and enumerated historically or mineralogically significant collecting areas. The letter suggested constructive emendations to the Draft Plan which would clarify its provisions for hobby collecting. The letter also addressed the importance of differentiating “[commercial] mining” and “illegal mining” from “hobby collecting.” These activities were conflated in the Draft Plan and related documents; they were carried over into the Final Plan.

The joint **SDMG-CFMS** letter was co-signed by officers of the **AFMS**, the **Rocky Mountain Federation of Mineralogical Societies**, **Stewards of the Sequoia**, several gem-mineral societies and individual hobby collecting advocates.

Not only is the final plan extremely disappointing, it is hard not to interpret the blanket ban on hobby collecting as a pointed repudiation of recreational values, even low impact activities like Rockhounding.

### **SGMNM**

### **Plan & Land Management Plan Amendment**

*View the Plan and LUPA  
and other related documents  
on the Forest Service website*

<https://www.fs.usda.gov/project/?project=46964>

## ***Utah BLM expected to push back on public opposition to raising fees, less dispersed camping***

***Deadline: June 12, 2019***

**A**N ACTION ALERT from the **Western Slope No Fee Coalition (WSNFC)** is urgently calling for public comments on a controversial **BLM** plan that the organization says, if passed, will result in:

- The loss of three beautiful and popular fee-free undeveloped camping areas in the Richfield Field Office.
- A major expansion of the hiking permit system at Cedar Mesa in the Monticello Field Office to encompass Butler Wash, a large dispersed camping and hiking area.
- Increases in Cedar Mesa overnight and day use hiking permit fees of as much as 300%.

Last December the two **Utah BLM** offices received numerous letters opposed to the proposals. The **agency** seems committed to its original intent, despite having opened a second very short comment period. Critics think the **BLM** is paying lip service to engaging public participation, which is required by law. **WSNFC** is calling for redoubled efforts from the public to dissuade **Utah's BLM** from enacting its latest unpopular proposal. Read more about the issue and to whom letters should be sent by June 12th at:

<http://bit.ly/WSNFC-0619>



**BLM Field Tour &  
Desert District Advisory Council  
Business meeting  
June 28 – 29, 2019  
Barstow, CA**

**~ AGENDA ~**

*Desert Preservation  
and Recreation Act of 2019 (DRPA)*  
Read [Frazier Haney's article](#) about the DPRA,  
which appeared in SDMG's May bulletin  
(<http://bit.ly/S47-201905>).

*updates from council members  
updates from DAC Manager  
on ongoing recreation and energy projects*

**~ TIMES AND PLACES ~**

**BLM Field Tour – Friday, June 28, 2019**

8:30 am to 5:30 pm

**Meeting place:** BLM Field Office

2601 Barstow Road, Barstow, CA 92311

**Itinerary:** [on.doi.gov/2QOEVCg](https://on.doi.gov/2QOEVCg)

**DAC Meeting – Saturday, June 29, 2019**

9 am to 4 pm

**Meeting place:** Ramada Inn

1511 East Main Street

Barstow, California 92311

**Agenda:** [on.doi.gov/2K23HEK](https://on.doi.gov/2K23HEK)



**Submit written comments to the recorder at  
the meeting or in advance, mail to:**

Desert Advisory Council  
c/o Bureau of Land Management  
Public Affairs  
22835 Calle San Juan de Los Lagos  
Moreno Valley, CA 92553

**Got Questions? Contact:**

Martha Maciel

916-978-4616 or [mmaciel@blm.gov](mailto:mmaciel@blm.gov)

**Visit the BLM Website  
for details and last-minute updates:**  
[on.doi.gov/2HS5f1Z](https://on.doi.gov/2HS5f1Z)

**BLM accepting DAC nominations**

**Deadline: June 14, 2019**

Sarah Webster

BLM California State Office

Sacramento, CA 95825

916-978-4622 or [swebster@blm.gov](mailto:swebster@blm.gov)

**Federal Register Notice 84 FR 18312**

<https://www.federalregister.gov/d/2019-08724>

The Bureau of Land Management seeks nominations for open positions on the California Desert District Council (DAC). Appointments are for two years. All nominations must be received no later than June 14, 2019.

**To Apply to the DAC**

Obtain nomination forms and DAC info at the BLM-DAC web page: <http://bit.ly/DACpr2019>

All applications must be accompanied by letters of reference that describe the nominee's experience and qualifications to serve on the DAC from any represented interests or organizations, a completed DAC application, and any other information that speaks to the nominee's qualifications.

The DAC consists of members who represent stakeholder interests in public land management, such as conservationists, outdoor recreationists, ranchers, industry officials, tribal leaders, state and local government officers, academics, and others.

***It would be great  
for the hobby collecting community  
to have a Rockhound on the Council!***

**Stay current  
with [News.bytes](#)**

*The BLM California newsletter*



*Review by Gary Thrapp*

**T**HE SIXTEENTH ANNUAL Sinkankas Symposium was held on April 27, 2019 at GIA world Headquarters in Carlsbad, California. The event was co-hosted by the Gemological Society of San Diego, the Gemological Institute of America (GIA). The annual event was the inspiration of Roger Merk to honor his friend John Sinkankas, who passed away in 2002.

The topic this year was **Pearl**. Approximately 120 attended the event, which is slightly fewer than some recent years, but the pearl aficionados more than made up for it with enthusiasm.

Below are just a few highlights from the one-day event. Much more detail is available in the exceptional symposium proceedings, including page after page of absolutely stunning photography. For those who could not attend, the printed proceedings



are expected to be made available online (Print-On-Demand) from the print house (DPI Direct, in Poway, CA) later this summer. (Check the website at [www.sinkankassymposium.net](http://www.sinkankassymposium.net) for updates.)

**Top.** The speakers, *from left to right*: Bill Larson, Robert Weldon (emcee), Stuart Robertson, Betty Sue King, Douglas McLaurin-Moreno, Dona Dirlam (co-organizer), Hisano Shepherd, Jeremy Shepherd, Blair Beavers, and Dr. Chunhui Zhou. Photo: Jim Parrish. (Not pictured: Elisabeth Strack.)

**Above left.** Baja Pearls courtesy of Dorado, Cobre & Ala De Mosca, 7.53 cts, 4.18 cts and 6.56 cts. Photo: Mia Dixon/Pala International Inc.

**Above right.** Proceedings front cover: Neck-piece with carved shell cameo, Chinese freshwater pearls, Vietnamese pearl links, gold leaves and 250 round brilliant-cut diamonds. Courtesy of Llyn L. Strelau, Jewels by Design. Photo by Robert Weldon/GIA. Back cover: Cultured pearl (90 carats, 26 mm dia) from the Andaman Sea, Mergui Archipelago, Myanmar. Courtesy of Gems Museum of Myanmar. Photo: Robert Weldon/GIA.



A selection of pearls from the collection of Bill Larson were on display at the symposium. Photo: Jim Parrish.



Three flame-patterned Baja pearls from the collection of Bill Larson, 21.52 cts, 20.02 cts and 10.55 cts.. Photo: Mia Dixon/Pala International Inc.

The event was emceed by **GIA's Robert Weldon**, who recited his much anticipated poetry to introduce the day's program.

**Douglas McLaurin-Moreno** began the presentations with an historical review of pearls from the Sea of Cortez, which he explained in detail and with humor. **Douglas** is a manager for **Cortez Pearls**, in Mexico. It's the only commercial marine pearl farm in the Western Hemisphere and one of the first four in the world to be designated a sustainable operation.

For over 400 years the Sea of Cortez produced large quantities of pearls. Beginning in the early 1900s, however, environmental and political pressures resulted in the decline of the industry. Several twists and turns occurred in the 20th century for Mexican pearls, including some involvement of the Japanese. The Mexican pearl industry began a comeback in the 1990s.

Today, the private firm of **Cortez Pearls** produces pearls from the rainbow-lipped oyster which are highly prized for their rich untreated colors. These pearls typically display red or pink fluorescence under a longwave ultraviolet lamp. **Douglas** described the widespread, beneficial impact of the **Cortez Pearls** operation in regenerating pearl beds beyond the confines of the farm itself.

**Blaire Beavers**, editor of *Pearl Guide News*, presented a fascinating history of pearls reaching back to prehistoric times. She mentioned that early human societies in coastal regions were probably aware of pearls from their use of mollusks for food. Direct archeological evidence is limited due to pearls from

prehistory usually disintegrating when in prolonged contact with soil or moisture. Evidence from bone growths in the ear canals of ancient skulls, however, confirm that early people did frequently dive deep into cold water, probably for food and shells.

**Blaire** described the abundant use of pearls by the Greeks, Romans, and Indian royalty. New World sources eventually made pearls available to the middle class. She reviewed the expansion of the market due to Japanese cultured pearls, and later, freshwater Chinese cultured pearls, as well as South Sea and Tahitian cultured pearls. She mentioned a recent increase in interest in natural pearls. She also discussed newer innovations such as fireball pearls, soufflé pearls, and Edison pearls.





**Betty Sue King** of **King's Ransom**, known as the “Pearl Goddess” to her many fans, described her long journey to become one of the premier pearl dealers. From humble beginnings, she told how her parents instilled in her a strong work ethic and a value for education. Her first career after college was as a school teacher. After layoffs in her school system, she pursued diamond and jewelry sales and later expanded to pearls. With a network of dealer friends, and suppliers, she traveled the world sourcing pearls that met her high aesthetic standards. She gave a moving description of her enchantment while viewing the beauty of pearls.

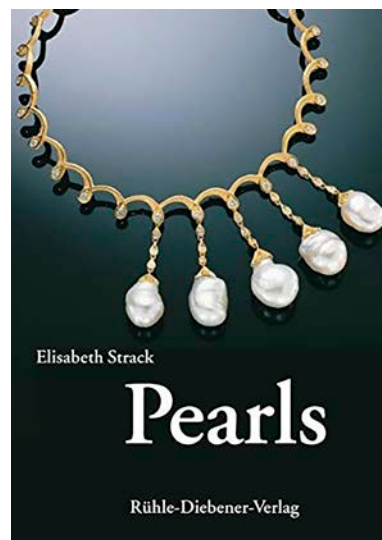
Today **Betty Sue** is a major dealer at Tucson and other prestigious gem shows. She continues her commitment to education and community service, and she gives back to the industry in many ways such as being a board member for the **American Gem Trade Association (AGTA)**. To everyone's delight, she concluded the question session after her presentation by singing a stanza from “Catch a Falling Star.” She mentioned earlier during her presentation that she chose Perry Como's hit song as a basis to sing a campaign speech during her successful bid for high school student body long ago.

Gemologist **Elisabeth Strack** is author of the book *Pearls*, which is commonly referred to as the “bible” when discussing pearls. She also publishes a quarterly pearl newsletter, *Margaritologia*. **Ms. Strack** approaches the subject of pearls with the razor sharp intellect of a scientist. She made sure we knew that pearl oysters are not true oysters as they are classified in a separate family; although, the term is widely used in the trade. She provided many details on the production and news from pearl localities throughout the world including the ancient sources of “oriental pearls,” later Western Hemisphere “occidental pearl” sources, as well as more recent sources of marine and freshwater cultured pearls and also sources of exotic natural pearls such as conch, Melo, abalone, and others. She mentioned that natural freshwater pearl production is now primarily occurring in the United States.

**Bill Larson**, president of **Pala International Inc.**, discussed his experience collecting natural pearls, particularly from Baja California, Mexico. He began acquiring natural pearls as a teenager from Baja oyster fisherman. He has continued to expand his collection with additional pearls from the region including abalone, clam, scallop, and other exotics. Prices have ranged from very accessible to considerable.



Composite image of cultured pearls, left to right: Mastoloni baroque pearl 23 mm; two small fancy pink and peach off-round cultured freshwater pearls, 9mm; two round white Australian cultured pearls, 12 mm; three Tahitian cultured black pearls 13mm. Photos: Robert Weldon/GIA.

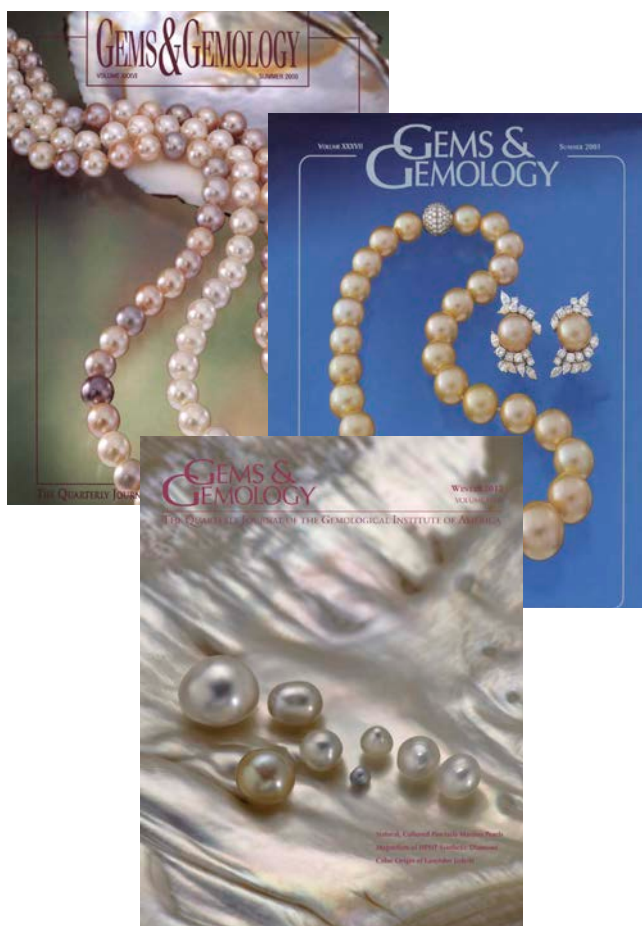


Butterfly brooch composed of natural South China Sea pearls and diamonds. Designed by John Ip and Bill Larson. Photo: Mia Dixon/Pala International Inc..

Gemologist and **GIA** researcher **Chunhui Zhou** took us on a journey through the evolution of pearl testing techniques. He covered the methods described in **GIA's** award-winning professional journal, *Gems & Gemology* (**G&G**), all the way from the beginnings of **G&G**, in 1934, to the present. All these articles are available free of charge to the public on **GIA's** website.

Initial research on pearls dealt with separating natural from cultured pearls, including using instruments to peer inside of drill holes, candling, and UV fluorescence. Steady improvements in various X-ray techniques, from film to real-time digital technology, have advanced pearl testing greatly. As color treatments have improved over time, numerous sophisticated techniques have been developed to detect them. **Chunhui** summarized the changes over time in the quality and value factors used to classify pearls.

**Stuart Robertson**, research director for **Gemworld International Inc.** and gemstone editor of the company's industry publications *GemGuide* and *Gem Market News*, focused his presentation on market trends and pricing in the pearl industry. **Stuart** mentioned that the current market consists overwhelmingly of cultured pearls, although exceptional natural pearls exist and are in demand at "astronomical" prices. He noted that today most pearl producers around the world have conceded the lower to near mid-quality range market to the vast supply of Chinese freshwater cultured pearls. In the recent era of generally declining prices, this means those producers now target their production on higher quality pearls. **Stuart** also repeatedly emphasized that pearl marketing has not sufficiently exploited the wide range of pearl products available today beyond the traditional white strand.





Acclaimed jewelry designer **Hisano Shepherd** of **Pearl Paradise** produces her own personal product line called **Little H**. With access to the **Pearl Paradise** vaults, she selects some of the finest pearls for her innovative creations. She took us through her design and production processes, which range from the conservative to the radical. Her process often involves placing other gemstones within carved cavities in whole or halved pearls, sometimes reminiscent of natural geodes. She gave us a detailed tour of her unique jewelry collections combining pearls with gold, diamonds, rubies, sapphires, emeralds, and other gemstones.

The concluding session was a viewing of the documentary film **Power of Pearl** by **Ahbra Perry** and **Taylor Higgins**. The film was introduced by **Pearl Paradise** president **Jeremy Shepherd**. It shows the many production challenges faced by pearl farms due to natural forces beyond their control. More than just documenting the mechanics of pearl farming, the film shows the dramatic economic effect the farms can have in improving the local isolated and often marginalized communities.



As always, the symposium ended with everyone eagerly anticipating next year's event.



### **Acknowledgments**

**Roger Merk**, long affiliated with **GSSD** prior to his passing in 2015, created the **Sinkankas Symposium** in honor of his friend, **John Sinkankas**, who passed away at age 87 in 2002. The internationally renowned mineralogist, gemologist, lapidary, author and illustrator was an inspiration to all who knew him. **Roger** worked tirelessly to produce a fun and informative one-day event featuring recognized authorities whose presentations would cover a range of topics related to the gem theme of the year – 16 gems since 2003.

**William Larson**, president of **Pala International Inc.**, has been the leading booster of the symposium since the first event was held in 2003. He helps set the theme and the program every year, contributing all manner of resources and support, including underwriting a significant portion of travel costs for speakers and the speaker dinner.

**GIA** has provided both the venue and professional staff to produce every annual event for the past



16 years. The **GIA** team ensured everything went flawlessly, from planning to execution. **Dona Dirlam** and **Robert Weldon** took the lead, with **Caroline Nelms** handling most of the logistical details.

Special thanks to **GSSD's** volunteers who helped with registration and to **James Porter**, especially, who was treasurer of the event.

The conference proceedings were produced by **GIA** staff under the direction of **Stuart Overlin**, with **Jennifer-Lynn Archuleta** in the role of Associate





GSSD President Donna Beers, Dona Dirlam, and GSSD treasurer Jim Porter. Photo: Jim Parrish.

Editor, design by **Faizah Bhatti**, and production by **Juan Zanahuria**. Most of the photographs were made by **GIA's Robert Weldon**, and **Pala International's Mia Dixon**. **Lisbet Thoresen** helped with promotion and other support.

Thanks to **Bob** and **Orassa Weldon** for hosting the speaker dinner this year. It was a great ending to a wonderful day.



Sally Parrish (right) with Renée Newman, author of *Pearl Buying Guide: How to Identify and Evaluate Pearls and Pearl Jewelry*. Photo: Jim Parrish.



Please be courteous and call the field trip leader to ask if you may participate in the field trip. Be sure to call again if you decide to cancel, so folks aren't waiting around for you. All CFMS affiliate clubs will ask you to sign a waiver, and you must agree to abide by the AFMS Code of Ethics and listen to directions of the field trip leaders.

**June 23, 2019**

**Fee Dig:**

**Dig time:**

**Meeting time & place:**

**Materials:**

**Sponsor:**

**Contact FT Leader:**

**Sign up online:**

**Details:**

### **Himalaya Tourmaline Mine – Fee Dig**

5 hours for \$75.00/adult; under 12 yrs. free with paid adult; Juniors 12-18 \$32.50 – 5 hours

10am to 3pm

Meet at 9:30am at the General Store

Pink and green tourmaline, black tourmaline, quartz crystals, spessertine garnet, lepidolite, clevelandite, and a variety of others.

Conejo Gem & Mineral Society

Adrian Ruiz, 805-512-3383

**(required)** [whoscoming.com/vgms](http://whoscoming.com/vgms)

[highdesertgemsandminerals.com](http://highdesertgemsandminerals.com)



~ Rock Collection on the block ~  
**Northridge, CA**

High Quality Geodes ♦ Laguna Agates  
Mexican Agates ♦ Brazilian Agates Minerals  
Cabochons ♦ Slabs  
Rough material

Our collection was built over a period of 51 years. It has won numerous awards including:

- Best in Class for lapidary in the American Federation of Mineralogical Societies (AFMS) show in 1978
- Best in Class for lapidary in the California Federation show, 1972.
- Best in Class for the World's Fair of Gems and Minerals, 1975
- Best in Class AFMS shows, 1975 and 1978

After 1978, we were guest exhibitors at many shows.

Please call **Marc** at 747-206-5070, we will be pleased to talk to you more about our collection.



## CLASSIFIED ADS

### OCEANVIEW MINE TOUR & SCREENING TRIPS:

Sundays, 11:00am to 3:00pm

For more information  
please visit [www.digforgems.com](http://www.digforgems.com)

or call Jeff Swanger at 760-415-9143  
Reservations required.

\$75. Adults \$60. Children (ages 5 to 11)  
Family rates available.

### HIMALAYA MINE TAILINGS:

Thursday-Monday, 10:00 am to 3:00 pm.

At the Lake Henshaw Resort on Highway 76.

Adults, \$75 per day. Kids 12-15, half price.  
Screening tables, buckets, and shovels provided.

Call (775) 830-5797

or (775) 772-7724 for more info

Website:

[www.highdesertgemsandminerals.com/](http://www.highdesertgemsandminerals.com/)

## WEBSITES

SDMG:

[www.sdmg.org](http://www.sdmg.org)

CFMS:

[www.cfmsinc.org](http://www.cfmsinc.org)

AFMS:

[www.amfed.org](http://www.amfed.org)

PUBLIC LANDS:

[www.amlands.org](http://www.amlands.org)

BLM:

[www.ca.blm.gov](http://www.ca.blm.gov)

BOB'S ROCK SHOP:

[www.rockhounds.com](http://www.rockhounds.com)

ROCKHOUND FORUM:

[groups.yahoo.com/neo/groups/la-rocks/info](http://groups.yahoo.com/neo/groups/la-rocks/info)

## ON THE GO ... TO A SHOW



### JUNE .....

#### 7–9 LA HABRA, CA

**North Oange County Gem & Mineral Society**

**(NOC) 2018 Show**

**Venue:** La Habra Community Center  
101 W. La Habra Blvd., La Habra, CA 90631

**Hours:** Fri 5:00 – 8:00pm;  
Sat 10:00am – 8:00pm; Sun 10:00am – 5:00pm

**Admission:** Free.

**Contact:** Armando Perdoza,  
[forestandson@yahoo.com](mailto:forestandson@yahoo.com)

**Web:** [www.nocgms.com](http://www.nocgms.com)

Exhibits, prizes, unique rocks, gems, jewelry.  
Tools, geode cutting, Kids' grab bags.

#### 8–9 GLENDORA, CA

**Glendora Invitational Gem & Mineral Show**

**Sponsor:** Glendora Gems & Mineral Society

**Where:** Goddard Middle School Gymnasium  
859 E. Sierra Madre, Glendora, CA 91741

**Hours:** Sat, 10:00am – 5:00pm  
Sun, 10:00am – 4:00pm

**Admission:** Free.

**Contact:** Bonnie Bidwell, 626-963-4638  
or [Ybidwell@aol.com](mailto:Ybidwell@aol.com)

#### 29–30 CULVER CITY, CA

**58th Annual Fiesta of Gems**

**– Opal is the featured gem**

**Sponsor:** Culver City Rock & Mineral Club

**Where:** Culver City Veterans Memorial Aud.  
4117 Overland Ave., Culver City, CA 90230

**Hours:** Sat 10:00am – 6:00pm;  
Sun 10:00am – 5:00pm

**Admission & Parking:** Free.

**Contact:** Janice Metz, 310-850-4398,  
[culvercityrocks35@gmail.com](mailto:culvercityrocks35@gmail.com)

**Website:** [www.culvercityrocks.org/fiesta.htm](http://www.culvercityrocks.org/fiesta.htm)

Club displays and exhibits, Kid Zone, craft demonstrations, book sales, tool dealers, 30+ gem and jewelry dealers, free hourly door prizes, grand prize raffle.

## JOHN E. GARSOW gems & minerals

**June 8–9**

**Glendora Invitational  
Gem & Mineral Show**  
Glendora, CA 91741  
Goddard Middle School Gym

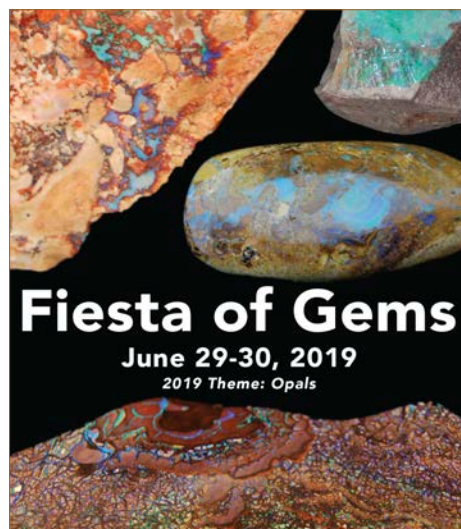
**July 26–28**

**Franklin Faceters' Frolic**  
Franklin, NC 28734  
Carpenter Building  
(Community Recreational Center)

Facet Rough • Cabbing Rough

Jewelry • Mineral Specimens

[www.johngarsow.com](http://www.johngarsow.com)





**29–30 ESCONDIDO, CA****Palomar Gem & Mineral Club****65th Annual Gem, Jewelry & Mineral Show****Venue:** California Center for the Arts

340 N. Escondido Blvd., Escondido, CA 92025

**Hours:** Sat 10:00am – 5:00pm;

Sun 10:00am – 4:00pm

**Admission:** Adults \$5.00; Kids 12 and under

Free with paid Adult admission.

**Parking:** Free.**Contact:** [PGMCshow@palomargem.org](mailto:PGMCshow@palomargem.org)**Web:** [www.palomargem.org](http://www.palomargem.org)

Dealers selling gems, rock rough, finished stones, jewelry, findings and supplies, beads, other rock related products. Free gem identification, lapidary and jewelry demonstrations, educational displays.

**AUGUST .....****2–4 NIPOMO, CA****51st Annual Rainbow of Gems Show****Sponsor:** Orcutt Mineral Society**Where:** Nipomo High School

525 Thompson Avenue

**Hours:** Fri-Sat 10am – 5pm, Sun 10am – 4pm**Admission & Parking:** Free. (No pets, alcohol, or tobacco).**Contact:** 805-481-3495**Web:** [www.omsinc.org](http://www.omsinc.org)[Download the flyer](#)

50 outside and 10 inside dealers. ONE-OF-A-KIND rocks, fossils, jewelry and other lapidary-related goods from all over the world. Great prices. Treasure Chest Prizes and kid's activities including the Central Coast Gold Prospectors.

**3–4 SAN FRANCISCO, CA****65th Annual Golden Gateway To Gems,****Gem & Mineral Show and Sale – show****theme: Gems & Minerals of the Far East****Sponsor:** San Francisco Gem & Mineral Society**Where:** San Francisco County Fair Building (Hall of Flowers)

9th Avenue &amp; Lincoln Way, Golden Gate Park

**Hours:** Sat 10am – 6pm; Sun 10am – 5pm**Admission:** Adult \$12.00; \$2.00 off with coupon for Seniors & Students (with ID).

Children under 12 Free (with paid adult).

**Contact:** Ellen Nott, [ellen\\_nott@yahoo.com](mailto:ellen_nott@yahoo.com)**Web:** [www.sfgms.org](http://www.sfgms.org)

Dealers offer a variety of items, demonstrations, activities for children, and mineral and gem identification.

**31–1 HANFORD, CA****5th Annual Gem & Mineral Show****Sponsor:** Diggin's Productions**Where:** Hanford Civic Auditorium

400 N. Douty St., Hanford, CA 93230

**Hours:** Sat 10am – 6pm, Sun 10am – 4pm**Admission:** Adults \$3, free for children 13 and under.**Contact:** Kathy Corbett at 559-904-4795or [Corbett1@sbcglobal.net](mailto:Corbett1@sbcglobal.net)

Vendors offering gems, minerals, jewelry, fossils, and finished and rough material, museum quality exhibit, demonstrations, activities for children.

**SEPTEMBER .....****13–15 DENVER, CO – The Original Denver Gem & Mineral Show – Canada Unearthed****Where:** Denver Mart Expo Hall

451 E. 58th Ave., Denver, CO 80216 (I-25 at Exit 215)

**Hours:** Fri 9:00am – 6:00pm, Sat 10:00am – 6:00pm, Sun 10:00am – 5:00pm**Admission (one-day pass):** Adults \$7.00, Seniors (65+), Military ID, Teens (13–19) \$5.00, Kids 13 and under (accompanied by an adult) Free. (See website for 3-day pass rates.)**Website:** [www.denvermineralshow.com](http://www.denvermineralshow.com)

More than 150 mineral, gem, fossil, book, and jewelry dealers. Nearly 100 competitive and non-competitive exhibits featuring the latest mineral and fossil finds from around the world, as well as world-class specimens of the show theme – Canada Unearthed.

# West Coast Gem & Mineral Show

**November 22 – 24, 2019**

**Hilton Orange County  
3050 Bristol Street  
Costa Mesa, CA 92626**

**NEW LOCATION!**



Elbaite, Himalaya Mine, CA. Martin Zinn Collection. Photo: © Jeff Scovil.

**FREE Admission   Parking \$10/day   OPEN to the Public**

**75 Select Retail & Wholesale Dealers  
Minerals ♦ Fossils ♦ Gems  
Jewelry ♦ Lapidary ♦ Home Decor**

See our website for directions

**[www.MineralShowsLLD.com](http://www.MineralShowsLLD.com)**



# KRISTALLE

Est. 1971

*Wayne and Dona Leicht*

WE ARE CASH BUYERS FOR SINGLE SPECIMENS AND ENTIRE COLLECTIONS!

875 North Pacific Coast Highway - Laguna Beach, CA 92651

949.494.5155 - fax: 949.494.0402

e-mail: [info@kristalle.com](mailto:info@kristalle.com)



## SUMMER CLASS SCHEDULE – 2019

### REGISTRATION IS REQUIRED BEFORE ALL CLASSES.

Email [school@sdmg.org](mailto:school@sdmg.org) for class availability before attending any class to find out when the class starts and ends, if special materials are required and whether you qualify to attend. Most, but not all instructors are holding classes over the summer– check with your instructor IN ADVANCE to ask about space and class dates.

Fee is \$5.00 per class; it is usually easier for instructors if payment is made for a full month; cash or checks only, please. Classes are open to members only and students must read and follow the **School Rules** available in the classroom and at: <http://www.sdmg.org/class-schedule/school-rules.pdf>

<b>CABOCHONS</b>	Wed	9 – 11:30am	Jim Claypool	
	Wed	6 – 9pm	Nita Sani	
	Thu	9am – noon	John Kruzel	
	Thu	7 – 9pm	Jon Evans	
<b>FACETING</b>	Tue	noon – 3pm	Elbert McCune	
	Tue	7 – 9pm	Jerod Schneider	
	Wed	9am – noon	Bob Hancock	
	Wed	noon – 3pm	Donna Beers	
	Wed	7 – 9pm	Elbert McCune	
	Thu	7 – 9pm	Bill Brisebois	
<b>BEG. METALS FABRICATION</b>	Wed	6 – 9pm	Stephanie Griffin	
	Thu	9am – noon	Denny Turner	
	Thu	1 – 4pm	Denny Turner	No classes after Jun 6 thru Aug
<b>ADV. METALS FABRICATION</b>	Tue	9am – noon	Jill Williamson	
	Tue	noon – 3pm	Jill Williamson	
	Tue	7 – 9pm	Al Puente	
	Wed	9am – 3pm	Denny Turner	No classes Jun, July, Aug
	Wed	9am – 3pm	Jackie Leverone	
	Thu	7 – 9pm	Ellen Riceman	
	Fri	9:30am – noon	Jill Williamson	
	Fri	12:30 – 3:00pm	Jill Williamson	
	Sun	9:00 – noon	Stephanie Griffin	
	(for continuing students only at this time.)			
<b>CASTING</b>	Mon	1:30 – 7:00pm	Rocio Bergum	
	Tue	9am – 2pm	Dave Smith	
	Fri	5 – 7pm	Rich Yarbrough	
<b>SPHERE MAKING</b>	Sat	1 – 3:30pm	Paul Williams	
<b>ROCK CARVING</b>	Mon	9am – 1pm	Jan Kunsas	5-week session, July 22 – Aug 19
<b>JUNIORS</b>	Sat	10am – 1pm	Dave Smith	

A collage of various gemstones in different shapes and colors, including blue, green, red, purple, and yellow stones, some faceted and some rough. The stones are arranged on a light background.

# **Thomas M. Schneider Quality Gemstones**


**861 6th Avenue, Suite 517  
San Diego, CA 92101  
[www.tmsgems.com](http://www.tmsgems.com)**

**Ph: 619-232-2624      Fax: 619-232-2213**

**www.tmsgems.com**


**Fax: 619-232-2213**

ELEVENTH ANNUAL  
SINKANKAS SYMPOSIUM  
RUBY




April 6, 2013 - Carlsbad, California


TWELFTH ANNUAL  
SINKANKAS SYMPOSIUM  
PERIDOT  
& UNCOMMON GREEN GEM MINERALS




THIRTEENTH ANNUAL  
SINKANKAS SYMPOSIUM  
OPAL



FOURTEENTH ANNUAL  
SINKANKAS SYMPOSIUM  
SAPPHIRE



FIFTEENTH ANNUAL  
SINKANKAS SYMPOSIUM  
TZANZANITE AND TSAVORITE



**THE ANNUAL SINKANKAS SYMPOSIUM**

[www.sinkankassymposium.net](http://www.sinkankassymposium.net)

“The best gem mineral symposium  
in North America.”  
– John Koivula

## AL'S OPAL IMPORTS & LAPIDARY

3684 Fairmount Avenue  
San Diego, CA 92105

619 282-1700

Al Ramirez, proprietor  
*U.S. Navy WWII South Pacific veteran*

### Unmounted Australian and African Opals

- Lapidary equipment new or used
- Tumblers, diamond blades, belts and grits
- Rough rock for faceting, slabbing or tumbling
  - Recycle your gold or silver jewelry into new designs or repair
- A variety of finished jewelry in silver or gold
  - Faceting gemstones

*All work done on premises*

*Layaway Available*

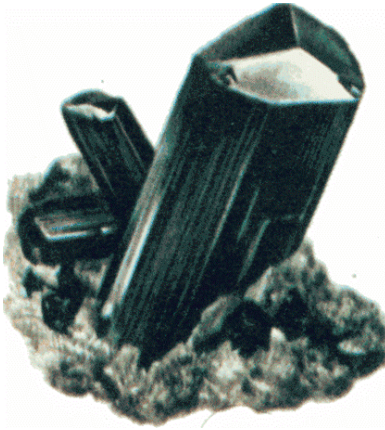


### HOURS:

Monday thru Friday  
8:30am to 3:30pm

Saturday  
9:00am to 1:00pm





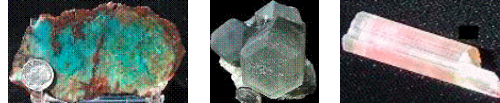
## MinersGallery.com

Rock Slabs, Bulk rock, Crystals, Jewelry,  
Fossils, Gems and Petrified Wood.

Phone: (619) 445-0800

[richard@minersgallery.com](mailto:richard@minersgallery.com)

[www.minersgallery.com](http://www.minersgallery.com)



Minerals and crystals from around the world

**\* ROCKS \* MINERALS \* GEMS \* JEWELRY MAKINGS \***

**\* LARGEST INVENTORY \***

**\* \* BEST QUALITY \* \***

**\* LOWEST PRICES \***

**\* NEW ARRIVALS DAILY \***

## **SOUTH AMERICAN IMPORTS**

**Direct Importers**

**2461 San Diego Ave. #104**

**San Diego, CA 92110**

**In Old Town, in Coyote Café Shopping Center**

**Tel: (619) 299-3877**

**OPEN EVERY DAY!**

# Village Silversmiths

**Bead Work  
Jewelry  
Slabs**

**1770 Village Place  
Balboa Park  
San Diego, CA 92010  
619 239-8812**

**Carvings  
Rocks  
Cabs**



2620 West Main St. Barstow CA 92311

Our business is putting fun and pride into your lapidary hobby or profession by making the right tools for your needs

## Astounding Selection of Minerals & Fossils from Around the Globe



## MINERS GEMS

Experts in Geology, Gemology & Paleontology

World Famous Gold Rush  
Rock Shop & Mining Museum

Daily Mineral Panning and Geode Cutting

Educational Programs Available

In Old Town San Diego State Historic Park  
2616 San Diego Avenue, San Diego CA 92110  
619-688-1178

[minersgemsandminerals@cox.net](mailto:minersgemsandminerals@cox.net)  
[www.minersgemsandminerals.com](http://www.minersgemsandminerals.com)



## San Diego Mineral & Gem Society, Inc.

A Non-Profit Educational and Scientific Organization

1770 Village Place, Balboa Park

San Diego, CA 92101-1651

[www.sdmg.org](http://www.sdmg.org)

### WELCOME!

The SDMG Building  
is located  
at the north end of  
Spanish Village  
in Balboa Park

SDMG Museum hours:  
11:00am to 4:00pm

Get information  
on classes, events,  
field trips, reports,  
reviews, slideshows  
and more at:

[www.sdmg.org](http://www.sdmg.org)

### ADDRESS SERVICE REQUESTED



### THE PEGMATITE – JUNE 2019

Sun	Mon	Tue	Wed	Thu	Fri	Sat
27	28	29	30	31	31 First Day - SD Fair 4-11pm 	1
2	3 GSSD Mtg 7pm, SDMG bldg	4	5 SD Fair Exhibitor Appreciation 7-9pm 	6	7	8
9	10	11	12	13	14	15
16	17  SDMG Board Mtg 7pm, SDMG bldg	18	19	20	21	22
23/30	24  SDMG General Mtg 7pm, SDMG Bldg	25	26	27	28	29