



San Diego Mineral & Gem Society, Inc.
A Non-Profit Educational and Scientific Organization

THE PEGMATITE

MAY 2019

SDMG's 58th ANNUAL BARBEQUE & SILENT AUCTION

Saturday, May 4, 2019

Doug Peeler, Chair

10:00am – 4:00pm, Balboa Park
Lawn at SW corner of
Park Blvd. & President's Way

More Sellers' Tables than ever!

~ Calling All Volunteers! ~
Our Annual Barbeque can only happen
with your participation (learn how on page 4)



Join us for a day on the green
Read the details on page 4

Official bulletin of the San Diego Mineral and Gem Society, Inc.

Affiliations: California Federation of Mineralogical Societies
American Federation of Mineralogical Societies
American Lands Access Association

Sister Club: Kingston Lapidary, Hull, England

Publication: *The Pegmatite* is published monthly (except July and August).

Submission Deadline: 3rd Tuesday of the month preceding next month's publication, unless otherwise indicated.

Membership: Anyone with an interest in minerals, fossils, lapidary, gems, or hand-crafted jewelry may join the Society.
Contact: membership@sdmg.org

Liability: The San Diego Mineral & Gem Society, Inc., is not and cannot be held responsible and liable for personal injuries, for damage or loss of property at any meetings, field trips, classes, shows, or any event sponsored or recommended herein.

Copyright: ©2019 San Diego Mineral and Gem Society, Inc.
Non-commercial reprint permission given, unless otherwise noted, provided proper credit is given.

Street Address: 1770 Village Place
San Diego, CA 92101-1651

Mailing Address: P.O. Box 710783
(membership apps) Santee, CA 92072
attn: Angela Cannon

Phone: 619-239-8812

Website: www.sdmg.org

Editor: Lisbet Thoresen, editor@sdmg.org

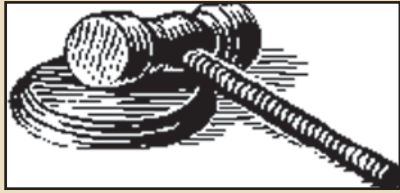
Layout, Advertising: info@sdmg.org

General Information: admin@sdmg.org

Change of Address: membership@sdmg.org

Exchange bulletins: Send to the Society mailing address

The mission of the San Diego Mineral and Gem Society, Inc., is to disseminate knowledge of mineralogy and earth sciences; to encourage the study of these subjects; to conduct classes in mineralogy and lapidary arts; to conduct field trips for the collection and study of specimens; to encourage interest in mineralogy and lapidary arts among young people; and to procure and maintain a collection related to the earth sciences and lapidary arts.



PRESIDENT'S MESSAGE

May 2019

by Jim Parrish

sdmgpresident@sdmg.org



ON THE ROAD, AGAIN. Sally and I hit the trail leaving late spring showers in the rearview mirror as we headed north out of San Diego at the end of April. Driving along Highway 395 toward Lone Pine and continuing on to Bishop, the skies were sparkling clear, but the surrounding mountains got a fresh dusting of snow (pictured above). It reminded us that the ever changeable beauty of California is awe-inspiring in springtime.

We were also reminded of that at last month's **General Meeting**, when **Lisbet Thoresen** gave a presentation on a field trip to the Mojave Desert's North Cady Mountains just as the wildflowers were beginning to bloom. The trip was led by **Bill Depue**, in coordination with **Ruth Hidalgo** and **Paul Hobbs**, who planned an itinerary to show the **BLM's Mike Sintetos** and **Kyle Sullivan** some historic fluorite prospects and landmark hobby collecting areas that Rockhounds want to see remain accessible as part of a management plan yet to be drafted for **Mojave Trails National Monument**. (The monument's boundaries now enclose the Cady Mountains.) **Lisbet** has posted her [Powerpoint deck online](#), and some photos from the field trip in late March can be found in this month's bulletin on page 11.

Be sure to read the updates on various public lands-related issues that follow **Lisbet's** photo essay. There's a lot going on that affects rockhounding in California. Among recent developments, landmark legislation on administering public lands was passed in March. It barely registered on the radar screen for many of us. This month, guest author **Frazier Haney** provides a review of the **California Desert Protection and Recreation Act of 2019**. Its passage has implications for permissible uses of public lands in California. **Frazier** is Associate Southern California Director for the **Conservation Lands Foundation** and member of the **California Desert Advisory Council**. His article appears on page 12. The final leg in the long journey to implementation is at hand for the **West Mojave Route Network Project**. This important **BLM** project will determine what routes will be okay to use on public lands. One last chance for public comment has a May 26th deadline. Read more on page 15.

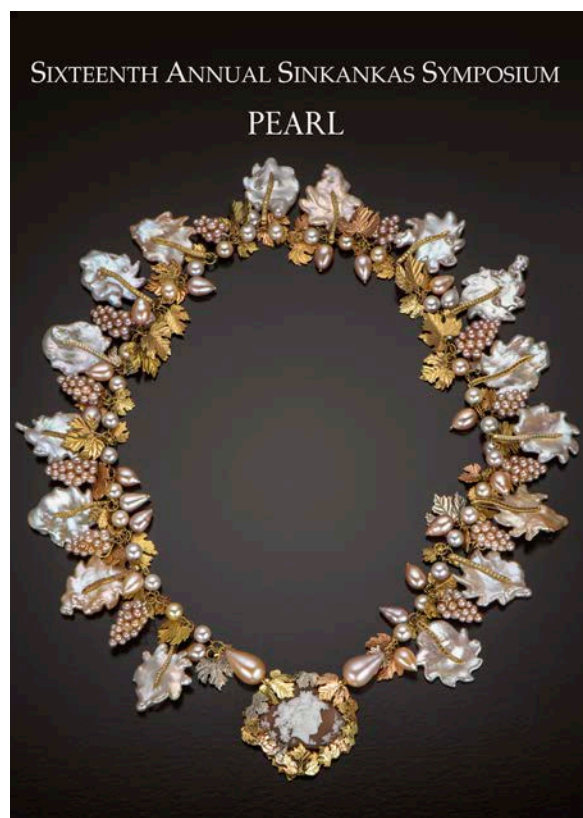
Looking in the rearview mirror at other recent events, the last Saturday in April marked the sixteenth year of the **Sinkankas Symposium**. **The Gemological Society of**

San Diego co-sponsored the day long event with the **Gemological Institute of America**, and as in years past, the **GIA's** world headquarters in Carlsbad provided the venue. This year's theme was **Pearl**, which is the first time an organic gem has been the featured topic of the annual event. Experts traveled across the United States and from as far away as Mexico and Germany to make presentations on a range of topics including but not limited to an update on pearl localities, market and price trends, gemological testing of pearls, collecting, and selected pearl fisheries that produce truly distinctive pearls.

Thanks to everyone responsible for producing another successful event, especially **GSSD's Donna Beers, Jim Porter and Gary Thrapp**, and **GIA's Robert Weldon, Caroline Nelms, and Kate Donovan**. **GIA** alum **Dona Dirlam** once again helped to organize the event this year. Look for a review of this year's **Sinkankas Symposium** in the June issue of *The Pegmatite*.

Looking ahead, on the first Saturday in May – the 4th – plan on attending **SDMG's 58th Annual Barbeque** in Balboa Park. Our **BBQ** is famous for its giant **Silent Auction**, for which people travel from all over Southern California to attend. **Doug Peeler** is the event chairman again this year, and he is looking for some volunteers to help out on Saturday. Please Call or text **Doug** ASAP – our events are only as good as the effort that goes into putting them on. It's definitely a team effort, so please sign up and be a part of creating another memorable **Spring Barbeque**. See page 4 for details.

The **General Meeting** for May has been rescheduled from the usual fourth Monday of the month to Friday, May 17th. Keeping with annual tradition, the **Juniors** will host the meeting. **Gerry "Gem Guru" Alvarado** will be the guest speaker. There will be lots of door prizes, with all donations benefiting the **Junior Division** fund, which enables activities such as field trips. By the way, this month's bulletin features photos from the **Juniors'** most recent field trip in March to the **Himalaya Mine**, which is located in Mesa Grande, near Santa Ysabel at Lake Henshaw. See **Junior Division News** on page 5.



Finally, I would be remiss to overlook mentioning a forthcoming event which is one of the best shows anywhere – the **Spring West Coast Gem & Mineral Show**. It's coming up May 10th through 12th. Find the perfect Mother's Day present at this great show, where some of the best dealers will be assembled under one roof. (You don't have to go all the way to Denver, and you don't have to wait until Tucson comes around, again.) The show is run by real pros, **LLD Productions**, and I can report that the new venue in Costa Mesa is a great choice. Access and parking are very easy. The **Hilton Inn – Orange County** is located at 3050 Bristol Street, Costa Mesa, CA 92626. If you have never been to this show, it really is one that is not to be missed. For more information, see the ad on page 19 or visit the website at:

www.mineralshowsllc.com/west-coast-spring

SDMG's 58th Annual Barbeque, Silent Auction & Ugly Rock Contest

Doug Peeler, Chairman

Saturday, May 4, 2019

10am to 4pm

Park Blvd & Presidents Way Lawn
Balboa Park



THE ANNUAL BARBEQUE will be in the usual spot at Park Blvd & Presidents Way Lawn (back lawn at SW corner, next to 163 onramp.) Parking is Free. It's a good idea to plan on arriving early. That way, you'll avoid weekend traffic in Balboa Park.

GREAT DOOR PRIZES

and more **SELLERS' TABLES** than ever

The **Spring Barbeque and Silent Auction** is one of **SDMG's** biggest annual events. There will be fun. There will be sellers' tables laden with rocks, slabs, faceting rough, tools, books, and more. There will be our world famous **H-U-G-E Silent Auction**. Bring up to 15 rock-related items to sell, with 10% of the proceeds going to **SDMG**. (You must bring your own table to sell items.) And, **NEW THIS YEAR**, a special drawing to win fabulous prizes !!

LUNCH CATERED BY THE BARBECUE PIT

The catered lunch includes sliced beef and chicken (instead of ham), cole slaw, beans, potato salad, dinner roll, cookies, and brownies. Water and soda will be available to purchase separately for \$1 each.

MEAL TICKET INFO

- **Cost:** \$15.00 adults, \$7.00 kids 12 & under
- For each ticket purchased, you will be entered into a drawing for fabulous prizes.
- **When:** Meal tickets must be purchased in advance.
- **Where:** The **Village Silversmiths**, from some class instructors, or **Doug Peeler**, call/text 619-244-0757 or email dlpeeler@earthlink.net.

***Didn't buy tickets
for a catered lunch?***

That's okay, you can bring your own!

Volunteers Urgently Needed

Our Annual Barbeque can only happen
with your participation

Every year some of your fellow SDMG members willingly give some of their time during the Annual Barbeque to make everything happen. This year won't you join us ?!

A couple of volunteers are needed most urgently:

- *Manage the Ugly Rock Contest*

Additional Volunteers are needed
in the following positions:

- *Saturday Morning Set-Up*
- *Greeters / Hospitality Booth*
- *BBQ Take Down*

Please sign up for a volunteer position
at the SDMG bldg.

OR

Call or text Doug Peeler at 619-244-0757
or email dlpeeler@earthlink.net

UGLY ROCK CONTEST!

HHEY, THIS IS a serious competition! Bring an **Embellished** (decorated to look like something), **Mimic** (already looks like something) or **Just Plain Ugly** rock, and beat your fellow twisted club members' ugly finds. Enter your rock between 10 and noon on the day of the **BBQ**. Voting occurs during lunch, and winners are announced around 2:00 pm.

There are Prizes: First place in each category is \$10. Second place is \$5.00, and Third place is \$1.00. See you at the Barbeque, with your Ugly Rocks.



JUNIOR DIVISION

Coordinated by
Dave Smith

Juniors' Field Trip to the Himalaya Mine

Review and photos by Dave Smith

YOU COULDN'T HAVE ASKED for better weather in the light of the recent storms we had in March. Our group was on the dig site a little past 10:00 am, with a few sleepy heads who overslept. After a brief lesson on the procedure, we attacked the dirt pile and filled our green and gray mini-buckets with hopes of pink and green tourmalines. Each sifted and washed screen held expectations of color and the hope of finding rough in the next one.

The heat of the sun and straining back muscles took their toll on my neighbor **Elbert McCune**, who had sense to break off and rest to pace himself. Fortunately, I and most of our group have much more sense than our shovels that filled our buckets, but we did cross paths with some interesting gem rough.

At around one o'clock, we stopped to take a group photo of the **Juniors** with **Elbert**, and yours truly. There were rolled pita sandwiches, bottled water, chips and juice for our group. After a sit down under the shade of trees, it was back to work. The mine drawing was done an hour before the 3:00 pm cutoff. Three prizes were offered that included a quartz specimen, a collection of minerals in a case, and a 50-lb. bag of high grade gem aggregate. We were running out time and the pile had been knocked down from a hill taller than **Wayne Leibitzke** to one that would barely hide the shortest **Junior** in our group. By the time the last bucket was called, some folks had already packed up or were in process of heading to their vehicles. All in all, I thought most everyone had a pleasant day in the mountains.

.....

The **Himalaya Mine** is located at the Lake Henshaw Resort in Santa Ysabel. It has a storied history, being part of San Diego County's Mesa



All in a day's work – the author finds a good-sized tourmaline crystal.



The Juniors attack a pile of tailings in search of treasure.



Not one to sit on the sidelines and watch others do the digging, 100-year-old Elbert McCune wields a shovel.



From tailings to the screening tables.



Carefully sifting through bucketfuls of finds.

Grande mining district, which dates to the 19th century. Pink and green (“watermelon”) elbaite tourmaline, black tourmaline (shorl), quartz crystals, spessertine garnet, lepidolite, and clevelandite are among the gem minerals found at the Himalaya Mine, but this locality is most well-known for pink tourmaline. At the turn of the 20th century, shiploads of pink elbaite crystals were shipped to the **Dowager Empress of China**, who commissioned her court lapidary artists to carve figurines and other decorative objects from the material.

Thanks to **Chris Rose** and his staff for providing the **Junior Division** with a memorable experience at the **Himalaya Mine**. A video of the **Juniors’** field trip may be viewed online at: <https://youtu.be/c811Owi7jdo>.



The Juniors lined up along the screening tables.



Ben shows off a tourmaline crystal he found.



Three generations screening for gems: Jayden with his dad and grandfather.



SDMG General Meeting

Friday, May 17, 2019

7pm, SDMG bldg.

Dave Smith

Junior Division Coordinator

THIS MONTH the **General Meeting** will be sponsored by the **Juniors**. Please be sure to note the change of date to Friday, May 17th at 7:00pm.

The speaker for the May meeting will be **Gerry “Gem Guru” Alvarado**. He is owner of **Miner’s Gems and Minerals**, a third generation, family-owned and operated rock and fossil emporium established in 1978 in **Old Town San Diego State Historic Park** (www.minersgemsandminerals.com). He has more than 40 years experience as a colored gemstone dealer and connoisseur. **Gerry** received his Graduate Gemology Diploma from the **GIA** in 2001. He is a much sought after speaker on gemological topics in the San Diego area, and he frequently exhibits his stones at local shows.

Please show your support for the **Juniors** by attending the May meeting and purchasing lots of door prize tickets. Please bring along a food, dessert or similar item to share. We will provide punch and coffee.

SDMG-GSSD Library

SDMG Bldg.

Donna Beers

Hours:

Tuesdays 2–4pm

Wednesdays 9–11am and 1–3pm

Reference use only, no lending.

Access the catalog online at:

<https://cloud.collectorz.com/sdmgmerklib/books>

Who may use the Library?

Membership is not required to view the catalog, but only **SDMG or GSSD** members may come use the reference library.

School News

Wayne Moorhead, School Director

New Equipment for the Shop. Casting classes now have a new burnout oven, and we’ve changed the burnout procedures by de-waxing our flasks, before putting them into the oven, for longer equipment life.

Interested in casting or other metals classes?

While taking your prerequisite cabochon class, we encourage students to visit the other classes they’re interested in, talk with those instructors about the tools and materials required, and when they could get into that class.

Be advised that some of our amazing instructors have long waiting lists, so talk to them and get on their lists as soon as possible. Teaching styles and techniques vary. Please remember we’re all volunteers at **SDMG**, so check out some classes and see if they’re a fit for you.

New Advanced Metals Class. Stephanie

Griffin will be teaching a new class on Sundays, 9:00 am to Noon. This class is for her continuing students only, at this time.

May 25th & 26th - Deliver San Diego Fair

exhibits. Please arrive at the Fairgrounds between 9AM and 6PM on Saturday or Sunday to deliver your exhibits and get them installed!

Enjoy class!

This 'n' That...

General Announcements

SDMG Board Meeting

Monday, May 20, 2019

7:00pm SDMG Building

GEMOLOGICAL SOCIETY of SAN DIEGO



GSSD General Meeting

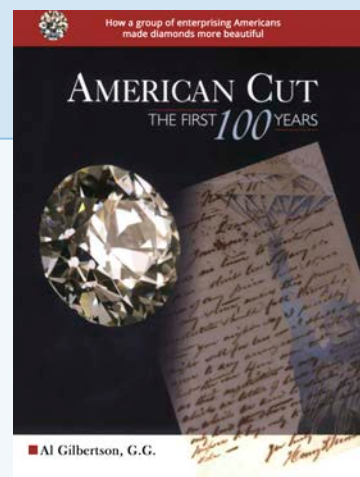
Gary Thrapp, Acting Program Coordinator

Monday, May 6, 2019 – 7:00pm SDMG Building

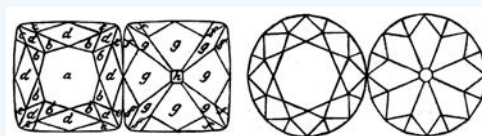
IN OUR CONTINUING TRADITION of world-class presentations, the **Gemological Society of San Diego** is very pleased to announce that the speaker at our next meeting will be **Al Gilbertson**, Project Manager, Cut Research, for **GIA** in Carlsbad. The topic is **“Evolution of the round brilliant form of cutting for diamond.”** It is the extraordinary story of how the modern “ideal cut” round brilliant diamond came to be. The talk is based on the **Gilbertson’s** book, *American Cut – The First 100 Years*. (See a review at: <http://bit.ly/Gilb1st100Years>).

Al Gilbertson is a **GIA** Graduate Gemologist and **American Gem Society (AGS)** Certified Gemologist. He has had a long career in the gem trade as a gem cutter, jewelry store manager, appraiser, inventor, researcher, lecturer, and author. He was a member of the **AGS Cut Task Force** that developed a cut grading system for round and fancy shape diamonds (1998–2000). His invention for a lighting system to analyze cut quality provided the foundation of **AGS’s ASET** technology for cut grading of diamonds. **Al** was hired by **GIA** in 2000 to be part of the team tasked with researching and creating **GIA’s** cut grading system for round brilliant diamonds. He is a co-inventor of **GIA’s** System and method for gemstone cut grading. In 2017 the **Accredited Gemologists Association** recognized his career accomplishments with the prestigious **Antonio C. Bonanno Award for Excellence in Gemology**.

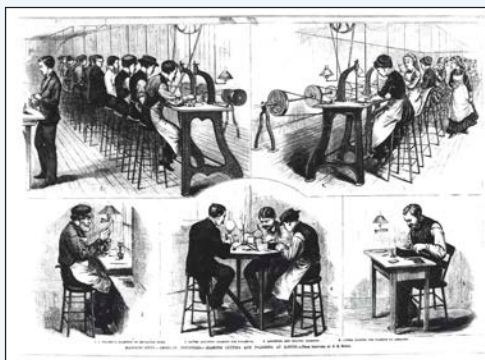
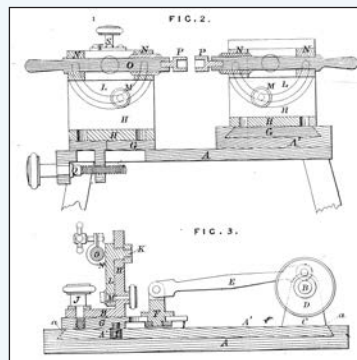
As always our meetings are free and open to the public, so please bring your friends. The society will have tea and coffee, please bring treats to share.



Al Gilbertson with an hourglass containing small diamond octahedral crystals. Photo: Kevin Schumacher, GIA.



Diagrams dating to 1750 of the two most popular styles of brilliant cutting, a cushion and a round. (David Jeffries, *A treatise on diamonds and pearls*. 1750.)



Left. Diagrams from a patent from the 1870s for a bruting machine for making the diamond round. (British patent # 2389/73, dated 1873.)

Right. A series of sketches showing the first diamond cutting shop in the US circa 1870–80. (*Frank Leslie’s Weekly*, 1878.)



SAN DIEGO COUNTY FAIR GEMS, MINERALS & JEWELRY DEPT.

by Anne Schafer, Coordinator

BY MIDNIGHT on the entry deadline of April 26, it turned out that 138 gems, minerals, fossils, faceting, jewelry and lapidary enthusiasts had entered a total of 368 entries. That's the third largest number of entries, all-time, beating out last year's number of 365. Right around 40 of the exhibitors are members of **San Diego Mineral and Gem Society**. Thank you for supporting the **Gems & Minerals Dept.** again this year!

There will be lots of cases filled with spheres (some of which will fluoresce), "how to" educational exhibits, the always special Rock Feast, plenty of faceted gemstones, petrified wood and geodes, the **Mineral of the Year – Birthstone Minerals** entries, the **Fossil of the Year – "Ammonites"**, over 30 cabochons and a dozen carvings. Did I fail to mention jewelry? **"Wizard of Oz"**, the Fair theme category, has 20 entries; there are 20 pieces in **Constructed Jewelry w/stones** (Amateur). It's going to be another great year for Gems & Minerals at the Fair! Please come see for yourself.



FAIR SCHEDULE 2019

- **Entry deadline:** Closed. Friday, April 26.
- **Deliver exhibits:** Saturday and Sunday, May 25 and 26, 9am to 6pm
- **Opening day of Fair:** Friday, May 31, 4 to 11pm
- **Fair closed:** All Mondays and Tuesday in June – June 3–4, 10–11, 17–18, 24–25.
- **Exhibitor Appreciation Night:** Wednesday, June 5, 7 to 9pm
- **Last day of Fair:** Thursday, July 4, 10am to 11pm
- **Pick up exhibits:** Saturday, July 6, 9am to 8pm

New classes for 2019 in the Gems & Minerals Dept.

Birthstone Minerals: One or five specimens, your choice.

Ammonites: One fossil specimen, worldwide, any size.

Trace Fossils: One specimen, worldwide, any size. (Ex: footprint, trail, burrow, etc.).

Gemstone Carving, Beginner: Must be natural mineral material. Four entries allowed!

Fair Theme Jewelry: "Wonderful World of Oz", single piece.



FACETING DEMONSTRATORS NEEDED AT THE FAIR

by Bob Hancock

Hello All,

The **San Diego Mineral & Gem Society** has successfully held faceting demonstrations each year at the **San Diego County Fair** for more than 20 years. Our aim is to continue holding demonstrations to exhibit our faceting skills and to help foster public relations, as well as to attract new members and interest in our society.

To accomplish our objectives and to maintain our good relationship with the fair and the public, we once again call on our volunteer demonstrators.

You do not need to be an accomplished faceter to demo at the fair. Someone will be on hand to help you get started. If you are a student and still working on your first stone, just bring what you have to the fair and continue working on it there. Bring your own visors, and a dopped stone. You will be using an UltraTec Faceting Machine or for those who prefer the Factron Faceting machine, we will be providing one for you. You will receive a free ticket to the fair on the day you sign up to demonstrate.

Your fair entry ticket may be picked up at the, "Will Call Booth," located on the left hand side of the main entrance to the fair. Volunteer times are 2–3 hours in length, then you may remain at the fair and enjoy the festivities until closing, if you so desire.

To Volunteer, see the sign-up sheets located in the Faceting Classroom, at the SDMG School Building. Call **Bob Hancock** at **619-889-6886** for additional information. We can use your help.

Volunteer!

Get a free ticket to the Fair!

Gem I.D. ~ If you are a current or past member of the Gemological Society, or have a degree in gemology, have we got a job for you! The refractometers and microscopes will be out each weekend during the Fair, waiting for YOU! Please contact **Jim Porter** at gemologysd@gmail.com to sign up.

Faceting Demos ~ If you would like to show off your faceting skills to the public (and you know how to run an Ultra Tec...), please contact **Bob Hancock** at rtourmaline2@aol.com to sign up.

Sand Pile ~ You can help kids screen for rock treasures, talk about rocks and generally have a good time. **SDMG** will be assigned several days at the Fair. There are three shifts on each day, and each shift lasts two hours. Please contact Asst. Coordinator **Jennifer Stapp** to reserve your spot: Cat333@san.rr.com

Other Demos ~ Chain making, Fossil prep, Wax carving, Wire wrap, Bead stringing, and the list goes on. If you have a rock or gem related activity that does not involve an open flame, a hot oven or anything else that might endanger the fairgoer, please contact Asst. Coordinator **Jennifer Stapp** to schedule your time slot: Cat333@san.rr.com

Remember: All volunteers will receive a free ticket to the Fair. Just pick it up at Will Call on the day you have signed up for.

We look forward to seeing you
at the 2019 San Diego County Fair!



Need more Info?

Give these folks a jingle:

Coordinator Anne Schafer

858-586-1637 or Agate.Annie2@gmail.com

Assistant Coordinator Jennifer Stapp

858-829-1723 or Cat333@san.rr.com

Finding Beauty in the Mojave Desert

presented by Lisbet Thoresen
Public Lands Representative
San Diego Mineral & Gem Society, Inc.

BILL DEPUE and I organized a Rockhounding field trip to the Mojave Desert on March 30, 2019. A special itinerary was planned specifically for two participants from the BLM: Kyle Sullivan, manager of Mojave Trails National Monument, and Mike Sintetos, Planning and Environmental Coordinator at the BLM's state headquarters in Sacramento. They will play key roles in drafting a management plan that balances acceptable uses within the monument, which the BLM promises will include accommodation of hobby collecting. We thought they might find it worthwhile to see Mojave Trails from the vantagepoint of a Rockhound.

Ruth Hidalgo and Paul Hobbs helped coordinate the itinerary with Bill, so that Mike and Kyle could visit some landmark rockhounding areas and historical mining prospects in the North Cady Mountains. (The Cadies are now almost entirely within the boundaries of Mojave Trails.) We visited four different localities: a historical fluorite mine located in the northeastern Pink Hills, another defunct fluorite mining locality known as "The Lost Cabin," "Miners' Cavern," and a locality in Pyramid Canyon, where fossilized cattail reeds, or Typha, can be found weathering out of the host rock throughout the site – in the bluffs, boulders, and cobbled slopes.

It was a picture postcard day. The weather was perfect and an awakening springtime Superbloom showed off the desert at its best.

View the PowerPoint slide deck (47 MB)
http://bit.ly/NCadyMts_ft_20190330



Mike Sintetos, Bill Depue, Kyle Sullivan, and Joe Sumners with the North Cady Mountains–Afton Canyon train trestle in the background. Wildflowers in the foreground are early Superbloom arrivals. March 30, 2019. Photo: Lisbet Thoresen.

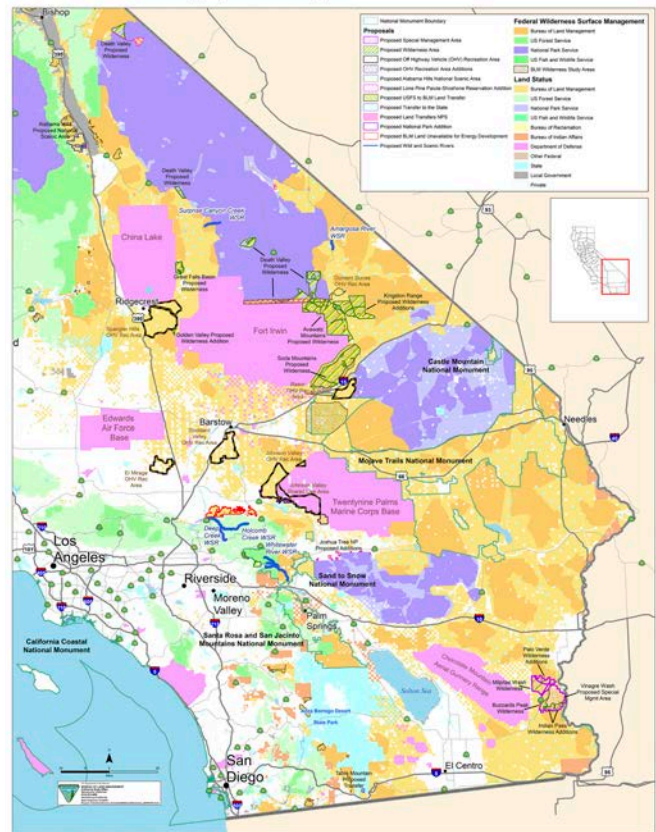


Mike Sintetos, Bill Depue, Ruth Hidalgo, and Kyle Sullivan at Miners' Cavern. March 30, 2019. Photo: Lisbet Thoresen.

May 1, 2019
by Frazier Haney

Now the question is: how will the new law affect management of public lands and public access to the California desert, particularly rockhounding?

This map prepared at the request of Senator Dianne Feinstein



As a representative of the environmental community, I recognize that historical conflicts between some conservation advocates and some hobby collecting proponents have engendered strong opinions, leaving some with a feeling that competing interests might be irreconcilable. However, I tend to believe the majority of people who care and know about the California desert don't want to see vast areas developed for industrial energy projects or waste dumps. They would much rather see low impact recreational activities like rockhounding be allowed to continue as previously, while also accounting for protection of wildlife, cultural resources, and water

resources. Recreational users have played a critical role in keeping public lands in the California desert free from industrial scale development. Bearing that in mind, I'd like to cover how the new legislation affects areas important to rockhounds.

Wilderness designations and Mojave Trails Natl Monument

One of the most critical areas of interest to Rockhounds is the Cady Mountains, much of which has been a **Wilderness Study Area** ("WSA") for decades. With the area being released from **WSA** status under the new law, many of the constraints that would have been imposed under a wilderness designation will not be applicable. Now included within the boundaries of the **Mojave Trails National Monument**, the Cady Mountains will be managed according to the management plan which has yet to be drafted for the monument. (During the interim, permissible uses, including **Rockhounding**, are unchanged.) While Rockhounding and vehicle access are controlled by numerous policies that were already in place before the **Mojave Trails National Monument** was created in 2016 (e.g., **WEMO**), members of the environmental community involved in the creation of **Mojave Trails**, as well as elected officials and agencies, are committed to ensuring hobby collecting opportunities are not lost because of the national monument designation. (See: <http://bit.ly/peg201710> and <http://bit.ly/DFDOI2016>)

Other lands, including **Bowling Alley**, the long narrow corridor of land between **Death Valley National Park** and **Fort Irwin**, have been added to the National Park there. Also added are several areas internal to the existing **Death Valley National Park** including the Crater area in the north end of the Park, as well as several thousand acres near the village of Joshua Tree along the northern border of **Joshua Tree National Park**. Consistent with **National Park Service** rules, these public lands will now be generally off-limits to collecting activities.

In the remaining areas affected by the legislation such as **BLM-managed Wilderness, Vinagre Wash Special Management Area**, and Juniper Flats near Apple Valley, collecting opportunities will be *status quo*.

National Off-Road Vehicle Areas

The new bill formally designates six off-highway vehicle (**OHV**) areas in San Bernardino County, covering approximately 200,500 acres, as permanent **OHV Recreation Areas**. These areas have long been managed by the **BLM** for this purpose; but the

"Rockhounding in the California Desert District has been a family activity and hobby for generations of Californians. The BLM is committed to focusing on rockhounding, and other recreational activities, in the development of the management plan for Mojave Trails National Monument. Input from the rockhounding community will be essential in helping us identify appropriate management actions that balance access with resource protection."

**– Kyle Sullivan,
BLM manager,
Mojave Trails National Monument**

new law secures these open access areas for off-road vehicles while still respecting resource values of the **California Desert Conservation Area** established by Congress in 1976. **BLM** is expected to prepare new land management plans for these areas.

Summary of Land Use Designations in the California Desert

- Designates 280,500 acres of Wilderness in the California Desert Conservation Area, including portions of the **Soda** and **Avawatz Mountains Wilderness Study Areas**, and additions to **Palo Verde, Milpitas Wash, and Buzzards Peak Wilderness Areas**.
- Releases 89,000 acres of **Wilderness Study Area** lands including all of the **Cady Mountains WSA**, portions of the **Great Falls Basin** and **Soda Mountains WSAs**.
- Designates 18,610 acres of **BLM** land in Inyo County as the **Alabama Hills National Scenic Area**, preserving it for continued recreational use.

- ## Protects and Builds on Existing Uses

The bill was developed in close consultation with the Department of Defense and contains language specifically requested by the department to ensure it is able to meet all existing and future military training needs. The bill includes language allowing low-level military overflights and training activities adjacent to conservation areas. Language contained in prior versions of the legislation addressing the training needs at the **Marine Corps Air Ground Combat Center** and providing permanent protections for the **Johnson Valley Off-Highway Vehicle Recreation Area** was enacted in the **National Defense Authorization Act** for Fiscal Year 2014.

To conclude, the new law is certainly unique and wide ranging – in the past, it was rare for conservation

It was an honor to testify in support of this legislation before the Senate Sub-Committee on Public Lands, Forests, and Mining in February of 2015, and it was rewarding to see the long effort finally succeed this year. I look forward to working with the communities in the California desert on implementing the new law while celebrating its passage.

Phone: 916-978-4622

<https://www.federalregister.gov/d/2019-08724>

To Apply to the DAC

All applications must be accompanied by letters of reference that describe the nominee's experience and qualifications to serve on the DAC from any represented interests or organizations, a completed DAC application, and any other information that speaks to the nominee's qualifications. The DAC consists of members who represent stakeholder interests in public land management, such as conservationists, outdoor recreationists, ranchers, industry officials, tribal leaders, state and local government officers, academics, and others. For more information, visit the BLM website at: <http://bit.ly/DACpr2019>

WEMO Route Network Project **Last stop to final destination**

May 1, 2019

by Lisbet Thoresen
Public Lands Representative
for San Diego Mineral & Gem Society Inc.

Protest Period Deadline: **May 26, 2019**

THE WEST MOJAVE (WEMO) Route Network Project (WMRNP) the Desert Renewable Energy Conservation Plan (DRECP) are two long-term projects of the **BLM** that have been years in the making. This month marks an important milestone for **WEMO** on its way to implementation, finally.

WEMO is a Route Network Plan and the **DRECP** is a sweeping, top-level land use guideline – it's the largest **Land Use Plan Amendment (LUPA)** in California state history. The two physically overlap the same areas in Southern California's deserts, but **WEMO** is focused more narrowly on routes. Even so, issues of permissible uses and routes of access necessarily occur in both and they intersect one another; hence, the **Final Proposed Action** for the **WMRNP** reflects **BLM's** effort to reconcile the overlaps/intersections.

The TakeAway

There were four alternative plans, including one No Action Plan, available for public consideration during the last comment period on the **WEMO Draft Environmental Impact Statement (DSEIS)**. The **Final Proposed Action** is embodied in **Alternative 5** (the new **Preferred Alternative**). Based on the comments **BLM** received, **Alternative 5** incorporates elements from the other previously proposed alternatives, primarily **Alternative 4**. (Elements of both **Alternatives 3 and 4** provided the most accommodations for recreational uses.)

In general, preserving routes based on Use-oriented values withstood challenges asking to drastically reduce routes based on Limited or no-use values. Reading **BLM's** responses to comments submitted, the agency took No Action on comments stating general values

**Start at the BLM WEMO web page
and follow the links to view anything and
everything related to it.**

<https://on.doi.gov/2V90hWV>

OR go directly to BLM's ePlanning web site for:
[DOI-BLM-CA-D080-2018-0008-EIS](https://on.doi.gov/2V90hWV)

**Here's what you'll find
on the ePlanning site:**

- WMRNP (final) FSEIS and Plan Amendment (591 pages)
- Executive Summary (see pages ES-1–20 of the full report)
- Appendices for BLM-proposed activity plans
 - See especially Appendix 1 – BLM Responses to Public Comments (78 pages)
<http://bit.ly/WMRNP-Appx1-201904>
- How to submit a protest letter and rules on how to format your comments

without also identifying specific routes in the plan (e.g., “reduce the number of routes in areas ABC” versus “eliminate Route #1234”). Many conservation oriented letters provided general statements and not route-specific statements. Likewise, No Action was taken in response to letters asking for “more open roads” without referencing specific routes. If you submitted a comment, you should find specific remarks in your letter organized topic-by-topic with other similar comments along with **BLM's responses in Appendix I**.

While delivery of **DRECP** has been delayed, Rockhounds have the opportunity to review **WEMO's** final incarnation during a last call 30-day protest period through May 26th. Objections concerning omissions or details found in **Preferred Alternative 5** need to be submitted by this deadline, if the public or Stakeholders take issue with any of its specifications.

Opportunity has passed to challenge the plan's basic premise or perceived foundational flaws (e.g., “throw it out and start over”). Stay focused on verifying that the routes you asked for in the last comment period made it into **Alternative 5**. Remember, comments must be route-specific or No Action will be taken. Finally, be respectful in your comments. **BLM** has worked hard to be sincerely responsive to Rockhounds. They are human and they have a tough job. If mistakes or omissions have been made, point them out respectfully.

WEMO, Appendix I: BLM's responses to DSEIS

<http://bit.ly/WMRNP-Appx1-201904>

BLM responses related to amateur collecting

Comment 4.7-9: Maintain access for rock and gem collecting (p. I-52)

Summary of Comments: These comments request that routes be opened to maintain access for rock and gem collecting.

Response to Comments: Where individual routes or areas are cited in the route-specific comments, BLM reviewed and reconsidered the proposed designation. This included consideration of the use of the route to with respect to the specific comment, as well as other use and resource protection factors cited in 43 CFR 8342.1.

Comment 4.7-11: Request that BLM continue to provide access to paleontology sites (pp. I-52–53)

Summary of Comments: These comments generally request that BLM designate routes that provide access to paleontology sites as motorized/open, or that the DSEIS specifically discuss how the effect on fossil inventory and management.

Response to Comments: Each route was individually analyzed with respect to the objectives of each alternative, identified access needs, and the user conflicts and resource protections specified in 43 CFR 8342.1. Access to paleontology sites, on its own, is not a criterion in 43 CFR 8342.1 and therefore was not directly used as a criterion in the WMRNP analysis. BLM has solicited input from the public regarding access needs, including access to paleontology sites. BLM has made changes in response to this public input, and will continue to solicit public input and make appropriate route designation changes in the future.



Please be courteous and call the field trip leader to ask if you may participate in the field trip. Be sure to call again if you decide to cancel, so folks aren't waiting around for you. All CFMS affiliate clubs will ask you to sign a waiver, and you must agree to abide by the AFMS Code of Ethics and listen to directions of the field trip leaders.

May 11, 2019

Meeting time & place:

Calico

8am, north side of Hwy 15 after exiting at the Yermo off ramp just past the Calico Ghost Town off ramp (heading east). Look for Edie World gas/food stop with the giant ice cream cone/sundae(?) in the parking area.

Materials: Silver Lace Onyx/Fossilized Palm Root

Sponsor: Conejo Gem & Mineral Society

Contact FT Leader: Chuck Borchart, chuck.cgmctrips@gmail.com

Sign up online: www.whoscoming.com/vgms

Details: High clearance 4×4 vehicle recommended. Bring a short shovel. Participants will be working a relatively steep tailing pile, so this IS NOT a great trip for children.

ON THE GO ...
TO A SHOW



MAY

3–5 YUCAIPA, CA – YVGMS 59th Annual Show

Sponsor: Yucaipa Valley Gem & Mineral Society
at the Yucaipa Music & Arts Festival

Venue: Adams St. & Yucaipa Blvd.

Hours: Fri 6–10pm; Sat noon – 10pm;
Sun noon – 7pm.

Admission: Free. Public welcome.

Contact/More Info: 909-238-8143

Web: www.yvgms.org

bit.ly/yvgms_show_2019

Vendors will provide a wide range of jewelry and artistic creations. Stop by the society's store booth, too. The popular geode cracker machine will be in action along with the prize wheel for the young ones. For the adults, the annual raffle will provide a chance to win the \$1,000 cash prize among the many winning items. Tickets are now on sale (six for \$5) and will be available at the festival. Winners need not to be present to win.

4–5 ANAHEIM, CA – Searchers Gem & Mineral Society Annual Show

Venue: Brookhurst Community Center
2271 W. Crescent Ave., Anaheim, CA 92801

Hours: Sat 10am – 5pm; Sun 10am – 4:30pm.

Admission & Parking: Free. Public welcome.

Website: www.searchersrocks.org

The show features many dealers with their rock- and jewelry-related wares, and the best silent auction around. There will be displays of members' work, demonstrations of lapidary,

stone carving, jewelry making, wire wrapping, faceting and many other rock and jewelry skills. There is a children's jewelry area where youngsters can make a piece of jewelry and take it home. Last but not least – a wheel of fortune.

4–5 JACKSON, CA – Gem & Craft Fair at the Kennedy Mine

Sponsor: Amador County Gem & Mineral Society

12594 Kennedy Mine Rd (off Hwys 49/88)

Hours: 10:00am – 4:00pm daily

Contact: Gaylene Lichty, 209-245-5388

or mountaingirl@volcano.net

Web: www.amadorgemandmineral.org/show.html

Rocks, Slabs, Hand Crafted jewelry, Beads, Gemstones and other hand crafted items.

10–12 COSTA MESA, CA – West Coast Gem & Mineral Show (Spring)

Sponsor: LLD Productions

Venue: Hilton Orange County/Costa Mesa
3050 Bristol Street, Costa Mesa, CA 92626

Hours: Fri and Sat 10am – 6pm;
Sun 10am – 5pm

Admission: Free. Public welcome.

Parking : \$10.00

Web: www.mineralshowslld.com/west-coast-spring

75 dealers, wholesale and retail, featuring minerals, fossils, gems, jewelry, beads, crystals, meteorites, lapidary, decorator items and gifts. Resale certificate required for admission to wholesale.

JOHN E. GARSOW gems & minerals

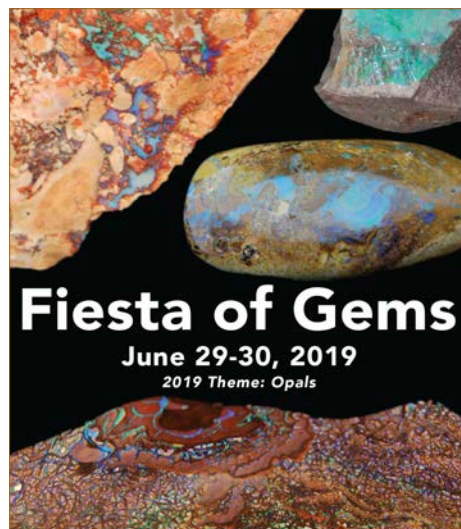
May 4–5, 2019
Searchers Gem & Mineral Society
Annual Show
Anaheim, CA

Brookhurst Community Center
2271 W. Crescent Ave., Anaheim, CA 92801

May 10–12, 2019
West Coast Gem & Mineral Show (Spring)
Costa Mesa, CA

Hilton Orange County/Costa Mesa
3050 Bristol Street
Costa Mesa, CA 92626

Facet Rough • Cabbing Rough
Jewelry • Mineral Specimens
www.johngarsow.com



Fiesta of Gems

June 29–30, 2019

2019 Theme: Opals

JUNE

7–9 LA HABRA, CA

North Oange County Gem & Mineral Society

(NOC) 2018 Show

Venue: La Habra Comunity Center
101 W. La Habra Blvd., La Habra, CA 90631

Hours: Fri 5:00 – 8:00pm;
Sat 10:00am – 8:00pm; Sun 10:00am – 5:00pm

Admission: Free.

Contact: Armando Perdoza,
forestandson@yahoo.com

Web: www.nocgms.com

Exhibits, prizes, unique rocks, gems, jewelry.
Tools, geode cutting, Kids' grab bags.

8–9 GLENDORA, CA

Glendora Invitational Gem & Mineral Show

Sponsor: Glendora Gems & Mineral Society

Where: Goddard Middle School Gymnasium
859 E. Sierra Madre, Glendora, CA 91741

Hours: Sat, 10:00am – 5:00pm
Sun, 10:00am – 4:00pm

Admission: Free.

Contact: Bonnie Bidwell, 626-963-4638
or Ybidwell@aol.com

28–30 CULVER CITY, CA

58th Annual Fiesta of Gems

– Opal is the featured gem

Sponsor: Culver City Rock & Mineral Club

Where: Culver City Veterans Memorial Aud.
4117 Overland Ave., Culver City, CA 90230

Hours: Sat 10:00am – 6:00pm;
Sun 10:00am – 5:00pm

Admission & Parking: Free.

Contact: Janice Metz, 310-850-4398,
culvercityrocks35@gmail.com

Website: www.culvercityrocks.org/fiesta.htm

Club displays and exhibits, Kid Zone, craft demonstrations, book sales, tool dealers, 30+ gem and jewelry dealers, free hourly door prizes, grand prize raffle.

29–30 ESCONDIDO, CA

Palomar Gem & Mineral Club

65th Annual Gem, Jewelry & Mineral Show

Venue: California Center for the Arts
340 N. Escondido Blvd., Escondido, CA 92025

Hours: Sat 10:00am – 5:00pm;
Sun 10:00am – 4:00pm

Admission: Adults \$5.00; Kids 12 and under
Free with paid Adult admission.

Parking: Free.

Contact: PGMCshow@palomargem.org

Web: www.palomargem.org

Dealers selling gems, rock rough, finished stones, jewelry, findings and supplies, beads, other rock related products. Free gem identification, lapidary and jewelry demonstrations, educational displays.

West Coast Gem & Mineral Show

May 10 - 12, 2019

NEW LOCATION!

Hilton Orange County

3050 Bristol St., Costa Mesa, CA 92626



*Neptunite, San Benito Co, CA
Photo by Jeff Scovil
Martin Zinn Collection*

FREE Admission
Parking \$10/day
OPEN to the Public

75 Select Retail & Wholesale Dealers
Minerals ♦ Fossils ♦ Gems ♦
Jewelry ♦ Lapidary ♦ Home Decor

See our website for directions

www.MineralShowsLLD.com

KRISTALLE

Est. 1971

Wayne and Dona Leicht

WE ARE CASH BUYERS FOR SINGLE SPECIMENS AND ENTIRE COLLECTIONS!

875 North Pacific Coast Highway - Laguna Beach, CA 92651

949.494.5155 - fax: 949.494.0402

e-mail: info@kristalle.com

SDMG BOARD MEETING HIGHLIGHTS

April 15, 2019

In attendance: President Jim Parrish and Board members Andy Anderson, Bob Hancock, John Kruzel, Wayne Moorhead, Melissa Ordway, Doug Peeler, Ellen Riceman, Anne Schafer, Dave Smith, Jennifer Stapp and Paul Williams. A quorum was present. **Excused:** Rocio Bergum, Dee Smith and Sally Parrish. **Absent:** Donna Beers, Donna Casey, Stephanie Griffin, Denny Turner and Jill Williamson. **Guest:** Letty Evans.

Membership: Membership Secretary Angie Cannon reported via email that SDMG currently has 746 members.

Juniors: Dave Smith reported that 25 Juniors and 27 adults attended the Junior field trip on March 30. There was good weather, hot but with a cool breeze. During 5 hours of screening from 10 a.m. to 3 p.m., everyone found something. There was also a free door prize drawing provided by the Himalaya Mine crew. Junior class attendance on Saturdays is averaging 10 students per session. The Juniors will host the General Meeting on Friday, May 17th.

Mineral Division: Jim Parrish transferred \$300 from the door prize kitty to the General Fund.

SVAC Liaison: Jim Parrish reported that Spanish Village hopes to put up a metal perimeter fence with gates that can be locked at night. SDMG's main double doors and north door will be outside the fence, allowing access to the SDMG building after hours. Both of SDMG's east doors will be inside the fence, allowing access to the bathrooms after hours.

School Director: Wayne Moorhead reported that the ordered sandpaper and bench pins have arrived, and that Vecella is fabricating a new kiln for the Casting Classes. A programmable controller was not ordered at this time, though such a control could be added later, if desired.

Motion carried unanimously to appoint Denny Turner as Assistant School Director.

School Faceting Liaison: Bob Hancock reported that Wednesday daytime faceting classes are full.

The faceting students will do an educational case for the Fair. A motion carried unanimously, allowing Bob Hancock to take the Ultra Tec V-5 faceting machine and a Facetron head to the Fair for demonstrating. Prices for faceting dops have increased; the price list will be updated to match the prices on the boxes of faceting dops.

Librarian: Jim Parrish is in contact with a retired librarian with mineralogical knowledge who might be willing to volunteer to assist with the SDMG Library on Mondays.

Donations: (1) Laura McCloud donated \$300 to Cab Class. (2) Kent Cross donated a bag of tumbled stones. (3) Ivan Jansen's family donated a truckload of equipment, tools, slabs, rough rock, silver and nickel silver stock, supplies and books. (4) A friend of Steve Dente's donated a new Facetron faceting machine, with head and dops. (5) Herb Walters donated a 50 lb. box of tumbled stones for December Nights, plus a bag of Y2K bugs.

BBQ: Doug Peeler has created volunteer sign-up lists for the BBQ. He reported that Tom & Lucia Barckley have retired as chairs of the Ugly Rock Contest; Sharon Griswold was suggested as a possible replacement. Jennifer Stapp provided Doug with confirmation of the location of the A/V rental company. Anne Schafer noted that volunteers are needed at the end of the BBQ, to help with takedown, table stacking, and garbage pickup and removal.

S.D. County Fair: Anne Schafer indicated that 64 entries have come in so far, and many more are hoped for. Jennifer Stapp said to contact her to volunteer for a shift on sand pile duty, or to do a demonstration.

Unfinished Business: Jim Parrish reported that the new sign for the south end of the SDMG Building is 99% complete. A team of three strong, able-bodied volunteers will be needed to hang the new sign.

Reminder: The Sinkankas Symposium will be held on April 27th at G.I.A, featuring "Pearls."

(Any member may attend Board meetings. The next one is May 20, 2019, at 7 pm in the SDMG Building.)



San Diego Mineral & Gem Society, Inc.

A Non-Profit Educational and Scientific Organization

Membership Information:

Interested in minerals, fossils, lapidary, gems, or handcrafted jewelry? We are, too!

There are now two ways to apply for or renew your membership –

1.) Send a check with your membership form to the membership secretary. The renewal form can be found at the **Village Silversmiths Shop** in the **SDMG** Building the **SDMG** website at:

www.sdmg.org/sdmg-public/pdf/sdmg-membership-app-and-renewal.pdf

Mail your completed application and check to:

San Diego Mineral & Gem Society
attn: Angela Cannon
P.O. Box 710783, Santee, CA 92072

MAKE CHECKS PAYABLE TO:

San Diego Mineral and Gem

Please allow up to 3 weeks
for processing your application

◇◇◇◇◇◇◇◇◇◇ **OR** ◇◇◇◇◇◇◇◇◇◇

2.) Sign up online using major credit cards via PayPal. Visit the SDMG website for details at:

www.sdmg.org/sdmg-membership/

Pay with mailed check: \$30 – first Adult Member

OR – Pay using PayPal: \$32 – first Adult Member

\$10 – Associate Adult Member at same household

\$10 – Junior Member

\$10 – printed/mailed copy of *The Pegmatite* bulletin

Subscribe yourself to the eNewsletter at: <https://goo.gl/KZqPsc>

published from September thru June
at the same time as *The Pegmatite* bulletin
(PDF online version)

**Members, you must subscribe yourself,
we cannot do it for you!**

Got questions? Email the SDMG Membership secretary at: membership@sdmg.org

CLASSIFIED ADS

OCEANVIEW MINE TOUR & SCREENING TRIPS:

Sundays, 11:00am to 3:00pm

For more information
please visit www.digforgems.com

or call Jeff Swanger at 760-415-9143

Reservations required.

\$75. Adults \$60. Children (ages 5 to 11)

Family rates available.

HIMALAYA MINE TAILINGS:

Thursday-Monday, 10:00 am to 3:00 pm.

At the Lake Henshaw Resort on Highway 76.

Adults, \$75 per day. Kids 12-15, half price.

Screening tables, buckets, and shovels provided.

Call (775) 830-5797

or (775) 772-7724 for more info

Website:

www.highdesertgemsandminerals.com/

WEBSITES

SDMG:

www.sdmg.org

CFMS:

www.cfmsinc.org

AFMS:

www.amfed.org

PUBLIC LANDS:

www.amlands.org

BLM:

www.ca.blm.gov

BOB'S ROCK SHOP:

www.rockhounds.com

ROCKHOUND FORUM:

groups.yahoo.com/neo/groups/la-rocks/info



CLASS SCHEDULE – 2019

REGISTRATION IS REQUIRED BEFORE ALL CLASSES.

Email school@sdmg.org for class availability before attending any class to find out when the class starts and ends, if special materials are required and whether you qualify to attend. Fee is \$5.00 per class; it is usually easier for instructors if payment is made for a full month; cash or checks only, please. **Classes are open to members only** and students must read and follow the **School Rules** available in the classroom and at:

<http://www.sdmg.org/class-schedule/school-rules.pdf>

CABOCHONS	Wed	9 – 11:30am	Jim Claypool
	Wed	6 – 9pm	Nita Sani
	Thu	9am – noon	John Kruzel
	Thu	7 – 9pm	Jon Evans
FACETING	Tue	noon – 3pm	Elbert McCune
	Tue	7 – 9pm	Jerod Schneider
	Wed	9am – noon	Bob Hancock
	Wed	noon – 3pm	Donna Beers
	Wed	7 – 9pm	Elbert McCune
	Thu	7 – 9pm	Bill Brisebois
BEG. METALS FABRICATION	Wed	6 – 9pm	Stephanie Griffin
	Thu	9am – noon	Denny Turner
	Thu	1 – 4pm	Denny Turner
ADV. METALS FABRICATION	Tue	9am – noon	Jill Williamson
	Tue	noon – 3pm	Jill Williamson
	Tue	7 – 9pm	Al Puente
	Wed	9am – 3pm	Denny Turner
	Wed	9am – 3pm	Jackie Leverone
	Thu	7 – 9pm	Ellen Riceman
	Fri	9:30am – noon	Jill Williamson
	Fri	12:30 – 3:00pm	Jill Williamson
NEW ADV. METALS FAB CLASS	Sun	9:00 – noon	Stephanie Griffin
(for continuing students only at this time.)			
CASTING	Mon	1:30 – 7:00pm	Rocio Bergum
	Tue	9am – 2pm	Dave Smith
	Fri	5 – 7pm	Rich Yarbrough
SPHERE MAKING	Sat	1 – 3:30pm	Paul Williams
ROCK CARVING	Mon	9am – 1pm	Jan Kunsza
JUNIORS	Sat	10am – 1pm	Dave Smith

Thomas M. Schneider Quality Gemstones



861 6th Avenue, Suite 517

San Diego, CA 92101

www.tmsgems.com

Ph: 619-232-2624

Fax: 619-232-2213



ELEVENTH ANNUAL SINKANKAS SYMPOSIUM RUBY
April 6, 2013 - Carlsbad, California

TWELFTH ANNUAL SINKANKAS SYMPOSIUM PERIDOT & UNCOMMON GREEN GEM MINERALS

THIRTEENTH ANNUAL SINKANKAS SYMPOSIUM OPAL

FOURTEENTH ANNUAL SINKANKAS SYMPOSIUM SAPPHIRE

FIFTEENTH ANNUAL SINKANKAS SYMPOSIUM TANZANITE AND TSAVORITE

THE ANNUAL SINKANKAS SYMPOSIUM – PEARL
Saturday April 27, 2019, Carlsbad, CA

www.sinkankassymposium.net

“The best gem mineral symposium in North America.”
– John Koivula

AL'S OPAL IMPORTS & LAPIDARY

**3684 Fairmount Avenue
San Diego, CA 92105**

619 282-1700

Al Ramirez, proprietor
U.S. Navy WWII South Pacific veteran

Unmounted Australian and African Opals

- Lapidary equipment new or used
- Tumblers, diamond blades, belts and grits
- Rough rock for faceting, slabbing or tumbling
 - Recycle your gold or silver jewelry into new designs or repair
- A variety of finished jewelry in silver or gold
 - Faceting gemstones

All work done on premises

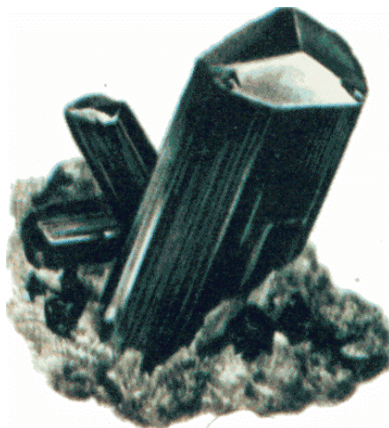
Layaway Available



HOURS:

**Monday thru Friday
8:30am to 3:30pm**

**Saturday
9:00am to 1:00pm**



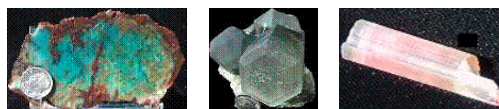
MinersGallery.com

Rock Slabs, Bulk rock, Crystals, Jewelry,
Fossils, Gems and Petrified Wood.

Phone: (619) 445-0800

richard@minersgallery.com

www.minersgallery.com



Minerals and crystals from around the world

*** ROCKS * MINERALS * GEMS * JEWELRY MAKINGS ***

*** LARGEST INVENTORY ***

*** * BEST QUALITY * ***

*** LOWEST PRICES ***

*** NEW ARRIVALS DAILY ***

SOUTH AMERICAN IMPORTS

Direct Importers

2461 San Diego Ave. #104

San Diego, CA 92110

In Old Town, in Coyote Café Shopping Center

Tel: (619) 299-3877

OPEN EVERY DAY!

Village Silversmiths

**Bead Work
Jewelry
Slabs**

**1770 Village Place
Balboa Park
San Diego, CA 92010
619 239-8812**

**Carvings
Rocks
Cabs**



Our business is putting fun and pride
into your lapidary hobby or profession
by making the right tools for your needs

Astounding Selection of Minerals
& Fossils from Around the Globe
MINERS GEMS



Experts in Geology, Gemology & Paleontology

World Famous Gold Rush
Rock Shop & Mining Museum

Daily Mineral Panning and Geode Cutting

Educational Programs Available

In Old Town San Diego State Historic Park
2616 San Diego Avenue, San Diego CA 92110
619-688-1178

minersgemsandminerals@cox.net
www.minersgemsandminerals.com



San Diego Mineral & Gem Society, Inc.

A Non-Profit Educational and Scientific Organization

1770 Village Place, Balboa Park

San Diego, CA 92101-1651

www.sdmg.org

WELCOME!

The SDMG Building
is located
at the north end of
Spanish Village
in Balboa Park

SDMG Museum hours:
11:00am to 4:00pm

Get information
on classes, events,
field trips, reports,
reviews, slideshows
and more at:
www.sdmg.org

ADDRESS SERVICE REQUESTED



THE PEGMATITE – MAY 2019

Sun	Mon	Tue	Wed	Thu	Fri	Sat
28	29	30	1	2	3	4 SDMG Annual BBQ 10am - 4pm Lawn at Park Blvd & Presidents Way
5	6	7	8	9	10	11
12	13	14	15	16	17 SDMG General Mtg hosted by the Juniors 7pm, SDMG bldg	18
19	20 SDMG Board Mtg 7pm, SDMG bldg	21	22	23	24	25 SD Fair Deliver exhibits 9am to 6pm PDT
26 SD Fair Deliver exhibits 9am to 6pm PDT	27	28	29	30	31 SD Fair Opening Day 4 to 11pm PDT	1