



San Diego Mineral & Gem Society  
A Non-Profit Educational and Scientific Organization

# THE PEGMATITE

June 2023

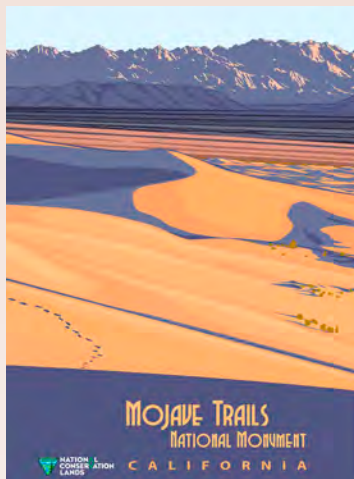


**Fair Opens June 7**

*Fair Info on pg. 6*

**Volunteers still needed  
at the Fair's Gems, Minerals  
& Jewelry Dept**

*Details on pg. 7*



**Rockhounds, the deadline  
approaches for your input on  
Mojave Trails Natl Mnmt**

**June 20, 2023**

*Article and some tips on pg. 15*

***Gem Diego Show is Back!  
Volunteers, your club needs you***

*by LuAnn Benton*

*Details on pg. 8*

***Kruzel's Cabochon  
Show and Tell***

***See the weekly winners  
for May on pg. 9***

***Transitions  
Simon King***

*by LuAnn Benton*

*See pg. 10*

Official bulletin of the San Diego Mineral and Gem Society

**Affiliations:** California Federation of Mineralogical Societies  
American Federation of Mineralogical Societies  
American Lands Access Association

**Sister Club:** Kingston Lapidary, Hull, England

**Publication:** *The Pegmatite* is published monthly (except July and August).

**Submission Deadline:** 3rd Tuesday of the month preceding next month's publication, unless otherwise indicated.

**Membership:** Anyone with an interest in minerals, fossils, lapidary, gems, or hand-crafted jewelry may join the Society.  
Contact: [membership@sdmg.org](mailto:membership@sdmg.org)

**Liability:** The San Diego Mineral & Gem Society is not and cannot be held responsible and liable for personal injuries, for damage or loss of property at any meetings, field trips, classes, shows, or any event sponsored or recommended herein.

**Copyright:** ©2023 San Diego Mineral and Gem Society  
Non-commercial reprint permission given, unless otherwise noted, provided proper credit is given.

**Street Address:** 1770 Village Place  
San Diego, CA 92101-1651

**Mailing Address:** P.O. Box 710783  
(membership apps) Santee, CA 92072  
attn: Angela Cannon

**Phone:** 619-239-8812

**Website:** <https://sdmg.org>

**Editor:** Lisbet Thoresen, [editor@sdmg.org](mailto:editor@sdmg.org)

**Layout, Advertising:** [info@sdmg.org](mailto:info@sdmg.org)

**General Information:** [admin@sdmg.org](mailto:admin@sdmg.org)

**Change of Address:** [membership@sdmg.org](mailto:membership@sdmg.org)

**Exchange bulletins:** Send to: [editor@sdmg.org](mailto:editor@sdmg.org)

The mission of the San Diego Mineral and Gem Society is to disseminate knowledge of mineralogy and earth sciences; to encourage the study of these subjects; to conduct classes in mineralogy and lapidary arts; to conduct field trips for the collection and study of specimens; to encourage interest in mineralogy and lapidary arts among young people; and to procure and maintain a collection related to the earth sciences and lapidary arts.



## PRESIDENT'S MESSAGE

June 2023

by Dave Smith

[president@sdmg.org](mailto:president@sdmg.org)

**W**ELL, HERE WE ARE in the June gloom weather season, but hopefully the sun will come out later in the month. I would like to cover some shop improvements that the board approved. Our new Elkay drinking fountain has been installed and plumbed to the drain. The slab saw oil cleaning system has been set up. We still need to raise the 24-inch slab saw by 6 inches to allow drainage to the cleaning system. This project is in progress.

The programable temperature controller for the casting kiln still needs attention, so this project is in progress as well. Some of the key volunteers in our shop have been working at the Gems, Minerals & Jewelry Department at the **San Diego County Fair**, which opens on June 7th, so we have been a little short-handed lately.

Speaking about the Fair, please check the information on page 6 in this bulletin and consider volunteering to assist with demonstrating or to help out with running the sandbox (see page 7). Volunteers who work a two-hour shift will receive a free ticket to the Fair.

Our summer workshop schedule begins on July 8th, with a one-week closure during the 4th of July week (July 2–8). The summer session will end with the Juniors' Saturday class on September 2nd, and the shop will be closed during Labor Day week (September 3–9). The fall session will begin on September 10th. Always contact the instructor prior to any workshop you wish to attend to ask about space, materials, or prerequisites.

The **Gem Diego Show** is back alive and kicking. It is scheduled for the end of October in a new downtown San Diego venue. If you go to the Fair, the amethyst cathedral offered as the grand prize for the door prize drawing at Gem Diego is displayed in the **SDMG Junior Division's** educational case (see page 4). Gem Diego will need a team effort to make it a fine show. Please consider volunteering and assist in some capacity within your ability. Please read more on page 8 about advance preparations that are starting now for Gem Diego.

We have a presentation this month on rainforest jasper from Queensland, Australia. **Dick** and **Mary Pat Weber** will talk about their adventures in Australia, as they have traveled practically to each coast of the continent. Our next General Meeting starts at 7:00 PM on Monday, June 26th. Refreshments will be available, and of course, we want you to bring a snack to share.

Lastly, our membership year is over on June 30th and our new year starts July 1st. Please renew your membership when you receive a renewal request in the mail. Your contribution helps to keep your society operating for your benefit by offering workshops, speakers, rock sales at dirt cheap prices, and special events like the **Christmas Potluck**. Alternatively, you can renew your membership online. Visit our web page at: <https://sdmg.org/sdmg-membership/>.

Thank you for your attention, have a great summer.



## SDMG General Meeting

Monday, June 26, 2023

7pm SDMG bldg.

Public Welcome!

**T**HIS MONTH'S PROGRAM will be "The Rainforest Jasper of Queensland, Australia," presented by **Dick** and **Mary Pat Weber**. This beautiful green rhyolite has a distinctive look, which has made it a favorite of mineral collectors and lapidary enthusiasts for the past 50 years. Along with the Mt. Hay thundereggs, this unique material is only found in one location in the world.

Mary Pat and Dick are retired geologists. During a year-long trip to Australia, they formed a friendship with the family that discovered and currently operates the **Rainforest Jasper mine** at Mt. Hay. They were granted access to restricted areas of the mine and able to examine the private collection of the owners. The Weber's will bring display specimens from their own personal collection for viewing.



Rainforest jasper  
from Queensland, Australia.

We'll have refreshments and door prizes. If you want to bring something to share at the refreshment table, we won't stop you. Everyone is welcome and we hope you'll have an enjoyable time. We will have the meeting in the SDMG museum at Balboa Park, Spanish Village (the largest building) at 7 PM.

## Workshop News

Yvonne Juarez, Coordinator

The spring workshop session ends with the Juniors' class on Saturday, July 1st. Most but not all instructors will have workshops during the summer. Check the SDMG website for the summer workshop schedule at: <https://sdmg.org/class-schedule/Summer-schedule-2023.pdf>. This schedule is sure to be updated, so refresh your browser to obtain a fresh copy from the server whenever you visit the website.

If you don't see the instructor you're looking for on the schedule listed, email me at [school@sdmg.org](mailto:school@sdmg.org) and I'll assist you.

The shop will be closed officially from July 2–8. Check with your instructor to verify the duration of workshops over the summer.

## SDMG-GSSD Library

SDMG Bldg.

Donna Beers

### Hours:

Tuesdays & Wednesdays, 1 to 2 PM

*Reference use only, no lending.*

### Access the catalog online at:

<https://cloud.collectorz.com/sdmgmerklib/books>

### Who may use the Library?

Membership is not required to view the catalog, but only **SDMG or GSSD** members may come use the reference library.





## JUNIOR DIVISION

*Coordinated by*

*Dave Smith*

[president@sdmg.org](mailto:president@sdmg.org)

**T**HE JUNIORS have been receiving an education in wire wrapping from our new class assistant, **Mrs. Michelle O'Sullivan**. As a graduate gemologist from GIA, she has brought a spark of energy to the class and enthusiasm for helping the Juniors complete the cabs and turn them into jewelry.

The Juniors have been busy preparing cabs for their class case at the **San Diego County Fair**. It opens at the Del Mar Fairgrounds on Wednesday, June 7th and ends on Tuesday, July 4th. They made a professional looking exhibit and showed great creativity interpreting the "Get out there!" Fair theme. Their exhibit is one of the best entries in the educational class this year. I am so proud of them. The Juniors who contributed cabochons to the exhibit include Adella F., Gabrielle F., Harold F., Noemi G-A., Alice A., Emma S., Merrick M., Kekoa P., and Kiera R.

The Juniors' class meets on Saturdays from 9:30 AM to 12:30 PM. We will continue the class through the summer session from July 8th to September 2nd.

Please don't forget to renew your membership when you receive a request in the mail. SDMG's annual membership renewal period begins July 1, 2023 and expires June 30, 2024. You can also renew online at: <https://sdmg.org/sdmg-membership/>.



Michelle O'Sullivan teaches wire wrapping at the Saturday Juniors' class.



**Middle right.** Michelle O'Sullivan with Kiera Roppe.

**Bottom right.** The Juniors' exhibit for the 2023 San Diego County Fair features cabochons made by the students in a public lands settings.

All photos by D. Smith.



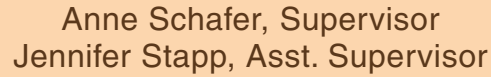


The Juniors: Merrick, Asher, Kiera, Adella, Kekoa, Alice, Emma, Noemi, instructor Michelle O'Sullivan, Harold, and Gabrielle. Photo: by D. Smith.

## VOLUNTEERS ARE NEEDED AT THE FAIR!

Junior volunteers are still being requested for a two-hour shift of sandbox fun at the Gems, Minerals & Jewelry Department at the Del Mar Fairgrounds. Free tickets for Volunteer service will be given to the Juniors and parent/adult chaperones who sign up at class or directly with **Jennifer Stapp**, Assist. Coordinator at [gems@sdfair.com](mailto:gems@sdfair.com). See more details about available time slots on page 8.





**We look forward to seeing you at the 2023 San Diego County Fair!**



***We are short-staffed & need volunteers this summer!***



## **SAN DIEGO COUNTY FAIR**

**Del Mar Fairgrounds  
June 7 – July 4, 2023**



### **Want to help make the fair a success?**

#### **Volunteer for two-hour shifts:**

*Children's sandbox of "buried treasure"*

*Demonstrators*

*Answer Questions (supervisor will train you)*

*The times for each day are 11-1, 1-3 and 3-5*

SDMG and other clubs throughout San Diego get involved in the Gem & Mineral Department by signing up to demonstrate skills or to run the children's sandbox filled with tumbled rocks, i.e., "buried treasure."

Even if you are new to faceting, metal fabrication, sphere making, casting, rock carving, wax carving, chain making, wire wrapping, you can participate. Volunteers are needed who can demonstrate any of these skills to the public, or answer questions and explain what you are doing. People are very interested in all of this and look forward to seeing these skills demonstrated before their eyes.

### **How do I sign up to Volunteer?**

Contact Asst. Supervisor Jennifer Stapp  
858-829-1723 or [Gems@SDFair.com](mailto:Gems@SDFair.com)

*Besides the satisfaction of volunteering,  
you'll be rewarded for your effort  
with a free Fair ticket and parking pass*

Children are intrigued by the sandbox, but they need to be shown what to do, and they need help identifying the minerals/rocks they choose to take home for free. (There are two displays with pictures of rocks and their names to help you identify them.) It's amazing how well you will learn how to identify gem minerals and rocks by doing this. And the children's excitement is contagious to everyone who works the sandbox.

The physical presence of volunteers and their interaction with the public is a big part of what makes the Fair a success. It's fun for the kids and also for the adults who are still kids at heart.

## **Gem Diego Show Calling all volunteers**

Liberty Station Conference Center  
(downtown San Diego)

### **Volunteer Dates:**

October 27 – 29, 2023

Fri & Sat 10 AM – 5 PM; Sun 10 AM – 4PM

### **Show Dates:**

Sat & Sun, October 28 – 29, 2023

## **Happy that the Gem Diego Show is back? We need you to help make it a success**

Chair positions need to be filled ASAP:

**Secretary, Treasurer, Advertising,  
Door Prizes, Exhibits & Skirting**

Volunteer to work on a committee

*see details in sections below*

*(“roles for Volunteers” & “What tasks”)*

### **How do I sign up to Volunteer?**

Contact Gem Diego Chair LuAnn Benton

[friendship@sdmg.org](mailto:friendship@sdmg.org)

The last **Gem Diego Show** was held in 2017. Everyone has missed it! We are happy to have booked a new venue in downtown San Diego near the harbor. It is a huge space on one floor, with lots of free parking, and restaurants and hotels nearby. Best of all, it is free! We have lost members over these last six years due to illness, retirement, death, and relocation away from the San Diego area. So, it's time that new people who have lots of energy and enthusiasm come forward, join the SDMG family, and volunteer some time to our biggest event of the year. We train you on the job, so it's simple; although, it does take some work.

### **What is Gem Diego?**

Historically, we have set up booths for the dealers to sell their specialty items including rough rock, minerals, gems, fossils, jewelry, wire wrapped gemstones, tools, etc. SDMG members are invited to set up a display case to exhibit creations they've been making in the workshops. We ask for volunteers to step forward and demonstrate their skills at faceting, carving, cabbing, etc., just like at the San Diego County Fair.

### **Who hosts Gem Diego and what are the roles of Volunteers?**

SDMG hosts this event. We plan, organize, enlist members to chair different committees for tasks that need to be done. They include Dealers (chair contacts dealers about participating and taking their payments), Advertising, Secretary, Treasurer, Demonstrators, Door Prizes, Electrical, Exhibits, Truck/Hauling, Security, and Skirting. To get the show up and running, we need volunteers to work under the direction of the chair for each of these task areas.

### **What tasks need to be done the day before the show? (Fri, Oct. 27)**

Tables need to be skirted (covered); electrical cords need to be laid out and run to each booth. (This task requires people who have some electrical background). We also need eight physically adept individuals to meet at the SDMG storage garage in Clairemont to move everything from there into a 26-ft. box truck and then meet at the venue to help unload it all. These items include boxes of electrical cords, showcases, skirting material, banners, lights, and other miscellaneous things.

### **What tasks need to be done during the show? (Sat & Sun, Oct. 28– 29)**

Security; run the Door Prize Raffle plus sell tickets for door prizes, share two hour shifts at the Door Prize Booth; staff the club booths, demonstrators, answer questions from the public, and, in general, assist where needed.

### **What tasks need to be done to deinstall the show? (Sun, Oct. 29)**

Breakdown and pack all the electrical and exhibits, load the truck, return to the storage unit in Clairemont and unload there.

### **Please step up and lend a hand!**

The more volunteers we have, the faster and more efficiently everything will get done. It makes for happier workers too! That's Gem Diego in a nutshell. Okay, maybe slightly bigger than a nutshell, but, trust me, it will be well worth all the effort.



## *Kruzel's Cabochon Show & Tell*

John Kruzel's Thursday morning Cabochon Workshop "Show and Tell" during May was almost a clean sweep by one of the students! After Garrett Housley took the top honor on May 4, Candace Shannon swept the next three weeks with her efforts! Congratulations to Candace and Garrett – now, on to the five weeks of June! Will Candace continue her run, or will other members of the class take up the gauntlet she has thrown down?

As a reminder, at the end of every workshop, all the students show what they worked on that day, sharing what type of stone it is, and what they did to make it look good. The students then vote on the person they think did the best job on their cabochon. The prize is having their picture taken, holding their cabochon, while wearing a coveted gold medal, which is then posted in *The Pegmatite*. The winners for May are shown below.

*Congratulations  
to all on your  
beautiful cabochons!*



Garrett Housley – May 4



Candace Shannon – May 11



Candace Shannon – May 18



Candace Shannon – May 25

## *Simon King*

January 30, 1939 – June 1, 2023

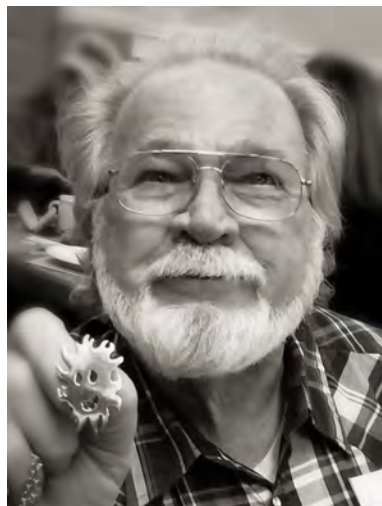
**S**IMON KING, dear friend and longtime SDMG member, has passed away. Simon's life came to an end on Thursday June 1, 2023 at 7:00 AM. He celebrated his 85<sup>th</sup> birthday on January 30, 2023. **Miguel Asmar**, his close friend and caregiver, said it was a very peaceful and smooth transition as Simon's spirit left his body to join all those who have gone before him.

In his most recent role at SDMG, Simon took on the position of Shop Director in September 2022. In April of this year, he was diagnosed with cancer. His doctors found that it had metastasized from his liver to other areas in his body. Even though Simon said he didn't feel bad and wasn't in pain, he started undergoing radiation treatments. After that, he started Immunotherapy, which can be very brutal on one's body. Just seven days prior to his passing, Simon suffered a brain bleed which led to him becoming unresponsive. He spent one night in the hospital and was sent home on hospice care. Fortunately, he didn't suffer and God took him home by the seventh day.

Miguel was at Simon's side the entire time. Miguel's sister, **Jennifer**, who's a caregiver, also came to take care of Simon, along with her brother. As difficult a time as Simon's last seven days were, Miguel is at peace with Simon's passing and takes solace in knowing that he fulfilled Simon's last wishes.

Miguel and Jennifer, thank you from the bottom of our hearts for all that you have done and continue to do. You've given devotion beyond measure to provide Simon a dignified end of life in his own home. You loved him and cared for him like no other family member could or would. You opened his home up for long-time friends of Simon's to drop by to visit and say their good-byes! Thank you for your love and devotion to this wonderful man!

[Read about Simon King](#) in a profile which appeared in *The Pegmatite* in March 2022. When details become available regarding plans to memorialize Simon, a special SDMG eNews notices will be sent.



Simon at SDMG's Annual Banquet in March 2019. Photo: J. Parrish.



Gladys Walker and Simon King were longtime companions. Shown here, they celebrated the holiday season together at SDMG's Annual Christmas Potluck in 2018. Photo: J. Parrish.



**Right.** Simon King at SDMG's Annual Barbeque in 2017. Photo: J. Parrish.

## Friendship, and Who & What's News

by LuAnn H. Benton, Friendship Chair  
friendship@sdmg.org

## SDMG Improvements

The **drinking fountain** is brand new in the cabbie workshop and a filter has been installed inside the fountain as well by **Paul Williams** (sphere-making instructor). It was not working for a while because there was an issue with its drainage, but that has been fixed.

Under the sink is another filter that also needed changing. That entire housing unit and filter has been removed and a new one installed in its place recently by **LuAnn Benton**. Everything is in working order with fresh water coming at you. Both filters will be changed on a regular basis according to manufactures guidelines. See record of changes above the fountain and sink for last date changed. LuAnn will be changing these out.



**Mike Frye**, Building Superintendent, cleaned around the base of the silver room wall outside and caulked it to prevent any further rain from leaking into the northeast corner of the room.

or parts of the building, or wall when hammering on your piece of metal. Thanks from John Kruzel.

Remember, when working outside the building, you are responsible for cleaning up the anvil stump, table and ground around you. Use a broom and dust pan, if needed.

**John Kruzel** donated to SDMG a “wood block” that is actually an Anvil Stump (pictured at right). It sits outside the back door of SDMG’s silver room. It replaced the old tree stump that was rotting away. Please use this anvil stump instead of the outside round table,

**Do you** see something that needs attention at SDMG? Do you want to take on a small job to help with tasks that needs someone's attention? Send me an email!

Have you already been on or going on a vacation?  
Gone rockhounding with a friend, spouse, partner or group?  
Is anything happening in your life that you'd like to share with SDMG?  
Want to make it funny, please do, so everyone can enjoy.  
Include name and phone number (for contact purposes only).  
I'll take care of any necessary corrections you may need.

Send to LuAnn via [friendship@sdmg.org](mailto:friendship@sdmg.org)

I really want to hear from YOU!

There is a mailbox slot  
in the casting room  
for any **Suggestions**  
you may have for SDMG.  
We value your input!  
Paper & pen are available!



Would you like your name on a **SDMG BADGE** to wear at meetings or other activities? Order by contacting **Angela Cannon**, the Badge Chairman at: [membership@sdmg.org](mailto:membership@sdmg.org).

The price per badge with a standard magnetic holder is \$14.00 plus \$7.95 tax & shipping.

A badge with the pin back is \$13.00. If you have a pacemaker, please order the pin back.

The badge measures 1" x 3". It has a white background with black lettering (see sample above).



If five or more badges are ordered, the cost is \$14.50 per badge (magnetic or pin back) and shipping is free.



Please be courteous and call the field trip leader to ask if you may participate in the field trip. Be sure to call again if you decide to cancel, so folks aren't waiting around for you. All CFMS affiliate clubs will ask you to sign a waiver, and you must agree to abide by the AFMS Code of Ethics and listen to directions of the field trip leaders.

**Call before you leave in case of last minute cancellations or changes in itineraries!**

**June 10, 2023**

**VGMS Day Trip – Avila Beach, CA – FULLY BOOKED** (you can add your name to a wait list, but first priority goes to VGMS members)

**Sponsor:** Ventura Gem & Mineral Society & Tri-Club Field Trips

**Sign Up/RSVP:** Trip leader David Springer (VGMS) [coastallapidary@gmail.com](mailto:coastallapidary@gmail.com) or 805-450-5025. Signed waivers required. Space is limited, so sign up soon if you want to go.

**Details & Directions:** <http://www.whoscoming.com/vgms/AvilaBeachDeeDeeite%20Biconoids.html>

**Meet Up:** 10:00 AM in Avila Beach. Meet at Front St. and San Luis in front of the steps to the beach. There is a convenience store and bathrooms nearby. Parking available along Front St. or half block away towards San Luis off other streets.

**Itinerary: Phase 1.** Hike toward beach, spend 90 minutes collecting, return to steps no later than 12:30 PM. **Phase 2.** Drive 45 minutes up Hwy 1 towards Cambria, then up Hwy 46 towards Paso Robles. Parking off highway on large shoulder. No facilities at second destination. Steep, short hike to collecting area where participants will spend ca. one hour mining biconoids along with orbicular rhyolite on the road cut before ending the trip and retuning home.

**Preparation/what to bring:** Bring drinks and snacks, wear layers of clothing, a hat, sunscreen, a rock hammer and a chisel, protective glasses, a bucket, and backpack or collecting bag. 4WD or high clearance vehicles not required on this trip. Sturdy, closed-toed shoes a must.

**Materials:** DeeDeeite (brecciated rhyolite), beach shells, agates, jasper, and biconoids.

ON THE GO ...  
TO A SHOW



## JUNE .....

### 10-11 Escondido, CA – Palomar Annual Gem, Mineral and Jewelry Show

**Sponsor:** Palomar Gem and Mineral Club

**Venue:** The Convention Center at the California Center for the Arts – 340 North Escondido Blvd, Escondido CA 92025

**Hours:** Sat 10AM – 5PM; Sun 10AM – 4PM

**Contact:** [tonifloyd41615@gmail.com](mailto:tonifloyd41615@gmail.com)

**Web:** [www.palomargem.org](http://www.palomargem.org)

Artisans selling handmade silver, gold, beaded and fabricated jewelry, antique and vintage jewelry, commercial quality gold and silver faceted stone jewelry, handmade specialty cabochons, mineral specimens, gem trees, other lapidary decorative items and rough rock from Africa, Australia and the USA.

### 17 BELLFLOWER, CA – Delvers Rock Lapidary Extravaganza Parking Lot Sale

**Sponsor:** Delvers Gem & Mineral Society

**Venue:** Holy Redeemer Lutheran Church  
14515 Blaine Ave., Bellflower, CA 90706

**Hours:** 10AM – 4PM

**Admission & Parking:** Free

**Web:** [delversgemclub.wordpress.com](http://delversgemclub.wordpress.com)

Parking lot sale featuring gems, minerals, equipment, odds and ends. Come One, Come All -- Support your local rock club.

### 23-25 Lodi, CA – CFMS Show and Convention

**Venue:** Lodi Grape Festival and Event Center  
413 E. Lockefort St., Lodi, CA 95240

**Hours:** Fri & Sat 10AM – 5PM; Sun 10AM – 4PM

**Admission:** Adults \$6, Kids 12 & under Free; Free to Military Active, Veterans and their Dependents with valid Military ID card.

**Web:** [cfmsinc.org](http://cfmsinc.org)

[www.grapefestival.com](http://www.grapefestival.com)

## JOHN E. GARSOW gems & minerals

June 10 & 11  
Palomar Gem & Mineral Show  
Escondido, CA

California Center for The Arts

Saturday 10 AM – 5 PM

Sunday 10 AM – 4 PM

Facet Rough • Cabbing Rough

Jewelry • Mineral Specimens

[www.johngarsow.com](http://www.johngarsow.com)



**Contact:** [rocksbob@sbcglobal.net](mailto:rocksbob@sbcglobal.net)

**Contact (dealer info):** [slchaisson@yahoo.com](mailto:slchaisson@yahoo.com)

Educational exhibits, speakers.

## JULY .....

### 8–9 CULVER CITY, CA – 60th Annual Fiesta of Gems – “Druzy”

**Sponsor:** Culver City Rock & Mineral Club

**Venue:** Veterans Memorial Auditorium  
4117 Overland Ave., Culver City, 90230

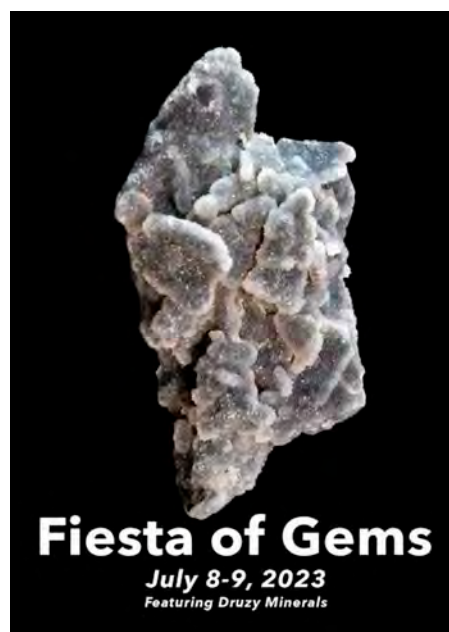
**Hours:** Sat, 10AM – 6PM; Sun, 10AM – 5PM

**Contact:** [culvercityrocks35@gmail.com](mailto:culvercityrocks35@gmail.com)

**Admission:** Free

**Web:** [culvercityrocks.org/fiesta](http://culvercityrocks.org/fiesta)

Over 30 Gem and Jewelry Dealers, Children’s games – Kid’s Zone, Door Prizes, Grand Prize Drawing, Book Sales, and Tool Dealers, Demonstrations, Free gemstone identification, Rock-it science, hands-on geologic wonders, Space rock expert presenting a variety of meteorites from around the world.



## AUGUST .....

### 26–27 ARCADIA, CA – “Inspiration Unearthed” 62nd Annual Tournament of Gems

**Sponsor:** Pasadena Lapidary Society

**Venue:** Arcadia Masonic Center

50 W. Duarte Rd., Arcadia, CA 91007

**Hours:** Sat, 10AM – 6PM; Sun, 10AM – 5PM

**Admission & Parking:** Free

**Web:** [www.pasadenalapidary.org](http://www.pasadenalapidary.org)





## *Public Lands*

### *BLM asks Rockhounds to define hobby for the Mojave Trails National Monument Plan*

*by Lisbet Thoresen, SDMG public lands representative*

**T**HE Bureau of Land Management (BLM) recently hosted four public meetings to explain the type of information it needs from the public to draft a Monument Management Plan (MMP) for **Mojave Trails (MTNM)**. Rockhounds made a strong showing at the meetings. Good! About 70 of the 90 participants at the Zoom virtual meeting held on May 24th were rockhound advocates, and about 40 more attended the Barstow in-person meeting.

#### **The devil is in the details**

BLM's message to Rockhounds is: "You need to define your activity and describe in detail your values and process." In other words:

- What do you collect and why?
- Where do you go and how do you get there?
- How do you collect (tools and techniques)?

It is important to make clear to the BLM that our recreational hobby **is** a low-impact, non-commercial activity and **is not** prospecting or mining (see: [bit.ly/blm-mining-minerals](https://bit.ly/blm-mining-minerals) and [on.doi.gov/3OYr2bo](https://on.doi.gov/3OYr2bo)). Currently, regulations tailored to mining is the guidance applied to casual collecting. This may seem absurd to most Rockhounds, but BLM needs to draft language in the MMP that explicitly differentiates rockhounding (casual collecting) from mining. There are going to be rules. Let's help the BLM create a good model for hobby collecting in a national monument.

#### **Two things you can do right now**

Anyone who cares about preserving hobby collecting as a recreational activity in Mojave Trails should submit a personal comment letter to the BLM by June 20, 2023 (see box at right for where to send your written comments). Please encourage your club or organization to sign onto a group letter. SDMG is in the process of drafting a letter, which will be ready for review shortly. Email [editor@sdmg.org](mailto:editor@sdmg.org), if you or your organization would like to sign onto it.

### **Comment Period Open for Mojave Trails Natl Monument Public scoping**

**Public comment deadline:  
June 20, 2023**

Substantive written comments may be submitted anytime through June 20, via mail at:

**ATTN: Mojave Trails National  
Monument Planning c/o**  
Needles Field Office, 1303  
S.U.S Hwy 95, Needles, CA 92363

~ Or via email ~

[BLM\\_CA\\_NFO\\_MTNM\\_PLANNING@blm.gov](mailto:BLM_CA_NFO_MTNM_PLANNING@blm.gov)  
or [BLM\\_CA\\_NFO\\_MTNM\\_PLAN@blm.gov](mailto:BLM_CA_NFO_MTNM_PLAN@blm.gov)  
Include the project name (MTNM Plan) in the  
subject line of your email.

Be sure to save a copy of your letter.

The BLM will consider all substantive public comments in preparation of the analysis, which will be made available for public review on the BLM's National NEPA website. For more info visit:

[https://eplanning.blm.gov/eplanning-ui/  
project/2022347/510](https://eplanning.blm.gov/eplanning-ui/project/2022347/510)

~ or short URL ~

[bit.ly/mtnm-mmp-rmp-ea](https://bit.ly/mtnm-mmp-rmp-ea)

The BLM intends to prepare a Monument Management Plan (MMP) for the Mojave Trails National Monument (MTNM), through amendments to the California Desert Conservation Area (CDCA) land use plan and an environmental assessment (EA). The BLM needs to modify some of the existing CDCA land use plan decisions and make implementation-level decisions for the MTNM.

### Some suggestions

about what to include in a comment letter

**BLM made a commitment to the public regarding its vision for Mojave Trails when the ROD was published in 2016.** According to BLM, a monument management plan for Mojave Trails would serve as a model for other monument management plans in the future. Rockhounds were assured the plan for MTNM would accommodate uses that have been disallowed elsewhere in the past, notably hobby collecting. Please stay true to the original intent for Mojave Trails.

**Include explicit language stating that amateur rock collecting/rockhounding is a permissible recreational activity within the monument.**

**Define terms/synonyms for rock collecting** (e.g., hobby, casual, or amateur collecting, rockhounding) as a low-impact recreational activity.

**Rockhounding is not mining and should not be administered according to the same criteria.** It is not archaeology, nor is it a wantonly destructive activity. A final rule for the **Paleontological Resources Act (PRPA)** is a useful model for some of the same issues BLM will confront in drafting a plan for MTNM. The final PRPA rule (August 2, 2022) provides constructive reference that the Bureau itself recognized as reasonable guidance for defining collecting activities and processes, e.g., the type of tools and how they are used. They may be reasonably extended to amateur collecting of rocks and minerals, which are regarded as less fragile and less rare than non-vertebrate paleontological resources. (For a review of the PRPA rule and its potential implications for Rockhounds, see **A. Hoekstra's** article from September 2022: [https://bit.ly/PRPA-rule\\_202209](https://bit.ly/PRPA-rule_202209). Consider the Bureau's responses to public comments and changes the agency made to the Act as a result (34 pp.): <https://bit.ly/FR-PRPA-20220802>)

**Hobby collecting is not incompatible with conservation values regarding habitat for flora and fauna.** Rockhounds enjoy the desert for its beauty, not only for its rocks. Responsible hobbyists

### Mojave Trails National Monument Countdown to a Final Management Plan

National monuments belong to everyone in the U.S. Rockhounds everywhere need to get involved.

**Got questions? Want to sign onto a joint letter?**

Contact Lisbet at [editor@sdmg.org](mailto:editor@sdmg.org).

Join SDMG's mailing list to stay abreast of public lands-related news. Longform articles and reports appear in the monthly bulletin (September – June).

Check the topics that interest you, including “public lands” to receive public lands-specific updates. If you would like to join a comment letter on the current public scoping for Mojave Trails, check the box for “Mojave Trails Natl Monument” – we'll let you know when a draft letter is ready for review, probably by June 8.

<http://bit.ly/sdmg-signup>

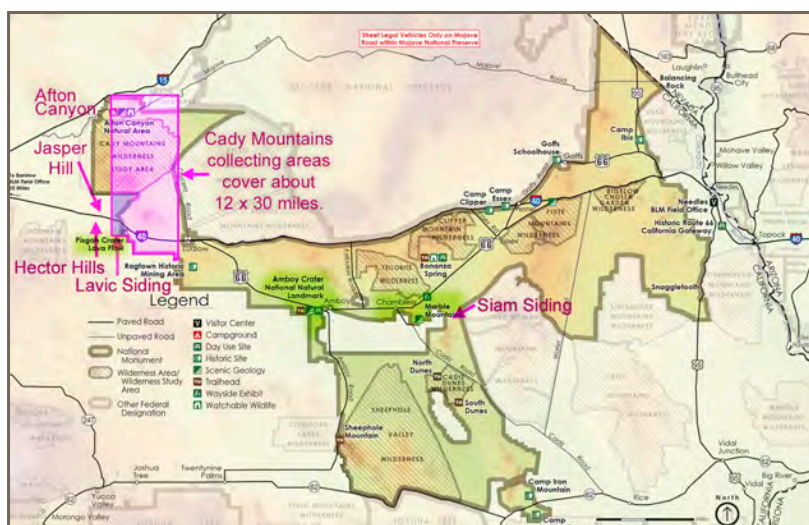
#### Planning Schedule for MTNM through ROD

Fall/Winter 2022	Notice of Intent
Summer 2023	Draft MMP / EA
Winter 2023	Proposed MMP / Final EA
Summer 2024	Approved MMP / ROD

adhere to the **AFMS code of ethics** ([https://www.amfed.org/land\\_use\\_policy.htm](https://www.amfed.org/land_use_policy.htm)). Many resources, such as the agate found at Lavic Siding are replenished by seasonal storms, while others are alternately exposed and then effaced by natural weathering processes.

**Recognize the customs and culture of the land concerning rockhounding in the Mojave Desert.** Many rock collecting areas located within the footprint of the Desert District and which are now part of the monument have been popular dating back to the 1930s and '40s (earlier for some localities).

Many longtime collecting areas are concentrated in the Cady Mountains (highlighted) in the Mojave Trails National Monument, but there are many other collecting areas elsewhere in the monument, e.g., Siam Siding. Others are located just outside but near the monument's boundaries. Source: BLM, with annotations by L. Thoresen.



**Describe your values**, e.g., educational value, recreation, having meaningful experiences over shared interests with friends and family, building a sense of comraderie and community.

**Pack in–pack out.** An important value – leave no trace.

**Describe how often you go on field trips and with whom**, e.g., friends or trips organized by gem-mineral clubs. Do you camp overnight or stay in hotels in gateway communities?

**Describe the hands tools and methods you use.** Don't forget to describe care to back-fill shallow trenches and holes.

**Ask BLM to incorporate language that codifies longstanding historical practice in the area between BLM and Rockhounds, which BLM has acknowledged exists.** Existing travelways including primary and secondary roads/trails, should be preserved. Access to collecting areas should not be restricted by gates and fences including secondary roads. Staging areas should be available. Access means that reaching a collecting site should not require hiking further than 1/4 mile from a staging/parking area. (Many Rockhounds are youngsters and seniors.)

**Some of the historically most significant collecting areas are located in a 12 × 30 mile area in the**

“Rockhounding in the California Desert District has been a family activity and hobby for generations of Californians. The BLM is committed to focusing on rockhounding, and other recreational activities, in the development of the management plan for Mojave Trails National Monument. Input from the rockhounding community will be essential in helping us identify appropriate management actions that balance access with resource protection.”

– Kyle Sullivan  
former manager,  
Mojave Trails National Monument

**Cady Mountains.** BLM is aware of this. However, BLM needs a lot of detailed input about other areas, including routes Rockhounds use to get to them.

**DRECP changed Development Focus Areas (DFAs) where access to collecting areas might be inhibited.** Please do same for MTNM. Also, DRECP did not sacrifice a single collecting area requested by Rockhounds.

**Include historical references**, e.g., guide books, mindat.org, etc. Maps and drawings too!

**BLM needs input about collecting areas with invertebrate fossils.** See previous comment above regarding PRPA.



## SDMG Membership...

### New Applications & Renewals for 2023–2024

The membership year “officially” started on July 1st. There is no pro-rating of dues, so it doesn’t matter when you sign-up or renew – all memberships for 2023–2024 will expire on June 30, 2024.

There are two ways to apply for or renew your membership –

1.) Send a check with your membership form to the membership secretary. The renewal form can be found on the **SDMG** website at:

[sdmg.org/pdf/sdmg-membership-app-and-renewal.pdf](http://sdmg.org/pdf/sdmg-membership-app-and-renewal.pdf)  
**OR**

2.) Sign up online using major credit cards via PayPal. Visit the SDMG website for details at:

[sdmg.org/sdmg-membership/](http://sdmg.org/sdmg-membership/)

Membership renewals are usually mailed to current members in late May or early June, and are typically “due” before classes begin in September, because people must be current members to attend fall classes. Some just pay their membership dues in class, on the day they show up, which is fine.

**Subscribe yourself to the eNewsletter at:**  
<http://bit.ly/SDMG-news>

*Published from September thru June  
at the same time as*

*The Pegmatite bulletin (PDF online version)*

(Members, you must subscribe yourself,  
we cannot do it for you!)

## CLASSIFIED ADS

OCEANVIEW MINE  
TOUR & SCREENING TRIPS:  
**CALL FOR CURRENT SCHEDULE**

For more information  
please visit [digforgems.com](http://digforgems.com)

or call Jeff Swanger at 760-415-9143

Reservations required.

\$75. Adults    \$60. Children (ages 5 to 11)  
Family rates available.

**HIMALAYA MINE TAILINGS:**

**CALL FOR SCHEDULE/HOURS OF OPERATION**

At the Lake Henshaw Resort on Highway 76.

Adults, \$75 per day. Kids 12-15, half price.

Screening tables, buckets, and shovels provided.

Call (775) 830-5797

or (775) 772-7724 for more info

[www.highdesertgemsandminerals.com](http://www.highdesertgemsandminerals.com)





# KRISTALLE

Est. 1971

*Wayne and Dona Leicht*

WE ARE CASH BUYERS FOR SINGLE SPECIMENS AND ENTIRE COLLECTIONS!

875 North Pacific Coast Highway - Laguna Beach, CA 92651

949.494.5155 - fax: 949.494.0402

e-mail: [info@kristalle.com](mailto:info@kristalle.com)



# WEST COAST GEM & MINERAL SHOW

Holiday Inn-Orange County Airport  
2726 South Grand Avenue ♦ Santa Ana, CA 92705

November 10-11-12, 2023

Fri & Sat 10 AM to 6 PM

Sun 10 AM to 5 PM

(Wholesale closes at 4 PM on Sunday)



Trapiche amethyst. Rondonia, Brazil. Photo: Jeff Scovil.

*80 Select Retail  
& Wholesale Dealers*

Minerals ♦ Gems ♦ Lapidary ♦ Beads ♦ Jewelry  
Fossils ♦ Decorator Pieces ♦ and much more!

FREE ADMISSION ♦ FREE PARKING ♦ OPEN TO THE PUBLIC

[www.MineralShowsLLD.com](http://www.MineralShowsLLD.com)

[mineralshowsllld@gmail.com](mailto:mineralshowsllld@gmail.com)



# **Thomas M. Schneider Quality Gemstones**



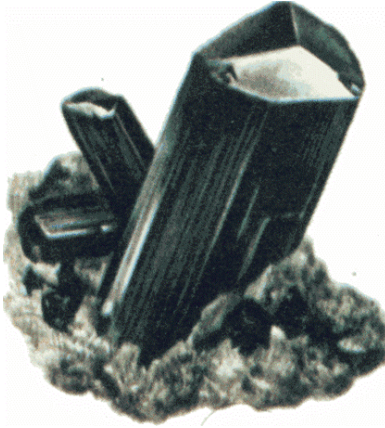
**861 6th Avenue, Suite 517**

**San Diego, CA 92101**

**[www.tmsgems.com](http://www.tmsgems.com)**

**Ph: 619-232-2624**

**Fax: 619-232-2213**



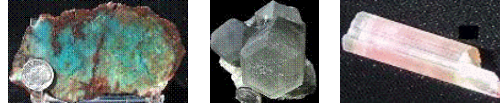
## MinersGallery.com

Rock Slabs, Bulk rock, Crystals, Jewelry,  
Fossils, Gems and Petrified Wood.

Phone: (619) 445-0800

[richard@minersgallery.com](mailto:richard@minersgallery.com)

[www.minersgallery.com](http://www.minersgallery.com)



Minerals and crystals from around the world

\* ROCKS \* MINERALS \* GEMS \* JEWELRY MAKINGS \*

\* LARGEST INVENTORY \*

\*\* BEST QUALITY \*\*

\* LOWEST PRICES \*

\* NEW ARRIVALS DAILY \*

## SOUTH AMERICAN IMPORTS

Direct Importers

2461 San Diego Ave. #104

San Diego, CA 92110

In Old Town, in Coyote Café Shopping Center

Tel: (619) 299-3877

OPEN EVERY DAY!

# Village Silversmiths

**Bead Work  
Jewelry  
Slabs**

**1770 Village Place  
Balboa Park  
San Diego, CA 92010  
619 239-8812**

**Carvings  
Rocks  
Cabs**





2620 West Main St. Barstow CA 92311

Our business is putting fun and pride  
into your lapidary hobby or profession  
by making the right tools for your needs

## Astounding Selection of Minerals & Fossils from Around the Globe



## **MINERS GEMS**

Experts in Geology, Gemology & Paleontology

World Famous Gold Rush  
Rock Shop & Mining Museum

Daily Mineral Panning and Geode Cutting

Educational Programs Available

In Old Town San Diego State Historic Park  
2616 San Diego Avenue, San Diego CA 92110  
619-688-1178

[minersgemsandminerals@cox.net](mailto:minersgemsandminerals@cox.net)  
[www.minersgemsandminerals.com](http://www.minersgemsandminerals.com)





**SAN DIEGO MINERAL & GEM SOCIETY | WINTER/SPRING 2023 WORKSHOP SCHEDULE**  
**Jan 9, 2023 – Jun 30, 2023**

**Signing up for classes:** Prospective students must contact the instructor prior to attending a workshop; click on the instructor's name to send them an email\*. The instructor will let the student know if there is room in their workshop, if there is a waiting list, what materials or tools are required, and if proof of COVID-19 vaccination or use of masks or face coverings are required.

**Class fees:** Adults: \$6 per 3-hour class. \$8 per class if longer than 3 hours. Juniors: \$1 per class.  
 Cash or checks only, please. Instructors may require prepayment of class fees per class, month, or per semester.

**Classes are open to SDMG members only:** Become a member here: <https://www.sdmg.org/sdmg-membership/> - or - in person during club hours.

Students must read and follow the **School Rules**, available in the classroom and at <https://sdmg.org/class-schedule/school-rules.pdf>

<u><a href="#">CABOCHONS</a></u>	Mon	6:00 pm – 9:00 pm	<a href="#">Mark Herman</a>
	Tue	6:00 pm – 9:00 pm	<a href="#">Steve Wright</a>
	Wed	9:00 am - 11:30 am	<a href="#">Itziar Parramon</a>
	Wed	12:30 pm - 3:30 pm	<a href="#">Simon King</a>
	Wed	6:00 pm - 9:00 pm	<a href="#">Nita Sani</a>
	Thu	9:00 am – 12:00 pm	<a href="#">John Kruzel</a>
	Fri	6:00 pm – 9:00 pm	<a href="#">Jon Evans</a>
<u><a href="#">FACETING</a></u>	Wed	9:00 am - 11:30 am	<a href="#">Mike Harkleroad</a>
	Wed	6:00 pm - 9:00 pm	<a href="#">Tim Sandiford</a>
	Thu	6:00 pm – 9:00 pm	<a href="#">Bill Brisebois</a>
<u><a href="#">ADV. FACETING</a></u>	Wed	12:00 pm - 3:00 pm	<a href="#">Donna Beers</a>
<u><a href="#">BEG. METALS FABRICATION</a></u>	Sun	12:00 pm – 3:00 pm	<a href="#">Miguel Asmar</a>
	Mon	6:00 pm – 9:00 pm	<a href="#">Al Puente</a>
	Wed	6:00 pm – 9:00 pm	<a href="#">Tim Swann</a>
	Thu	9:00 am – 12:00 pm	<a href="#">Bud Green***</a>
<u><a href="#">INT. METALS FABRICATION</a></u>	Tue	6:00 pm – 9:00 pm	<a href="#">Yvonne Juarez</a>
<u><a href="#">ADV. METALS FABRICATION</a></u>	Wed	9:00 am – 3:00 pm	<a href="#">Denny Turner</a>
	Wed	9:00 am - 3:00 pm	<a href="#">Jackie Leverone</a>
	Thu	1:00 pm – 4:00 pm	<a href="#">Denny Turner</a>
	Thu	7:00 pm - 9:00 pm	<a href="#">Ellen Riceman</a>
	Fri	9:00 am - 3:00 pm	<a href="#">Jill Williamson</a>
<u><a href="#">CASTING</a></u>	Tue	9:00 am – 2:00 pm	<a href="#">Dave Smith</a>
	Fri	7:00 pm - 9:00 pm	<a href="#">Rich Yarbrough</a>
<u><a href="#">ROCK CARVING</a></u>	Mon	9:00 am – 3:00 pm**	<a href="#">LuAnn Benton</a>
<u><a href="#">WAX CARVING</a></u>	Mon	10:30 am – 1:30 pm	<a href="#">Rose Feroah &amp; Lauren Holman</a>
<u><a href="#">SPHERE MAKING</a></u>	Sat	1:00 pm - 4:00 pm	<a href="#">Paul Williams</a>
<u><a href="#">JUNIORS</a></u>	Sat	9:30am - 12:30pm	<a href="#">Dave Smith</a>

\* If you have difficulty with using the link to contact an instructor it may be your computer/mobile device's restrictions or security settings. Please send an email to [school@sdmg.org](mailto:school@sdmg.org) for assistance.

\*\*Rock Carving may be taken as a full 6-hour class from 9 - 3, or as a 3-hour class from 9a-12p or 12p-3p

\*\*\* Miriam Larson will substitute from 2/1/23 – 6/30/23



# SAN DIEGO MINERAL & GEM SOCIETY | SUMMER WORKSHOP SCHEDULE

July 8 - September 2, 2023 (vers. 2023-06-06)

**Signing up for classes:** Prospective students must contact the instructor prior to attending a workshop; click on the instructor's name to send them an email\*. The instructor will let the student know if there is room in their workshop, if there is a waiting list, what materials or tools are required, and if proof of COVID-19 vaccination or use of masks or face coverings are required.

**Class fees:** Adults: \$6 per 3-hour class. \$8 per class if longer than 3 hours. Juniors: \$1 per class.

Cash or checks only, please. Instructors may require prepayment of class fees per class, month, or per semester.

**Classes are open to SDMG members only: Become a member here:** <https://www.sdmg.org/sdmg-membership/> - or - **in person during club hours.**

Students must read and follow the **School Rules**, available in the classroom and at <https://sdmg.org/class-schedule/school-rules.pdf>

<u>CABOCHONS</u>	Sun	9:00 am – 12:00 pm	<a href="#">Miguel Asmar</a>
	Mon	6:00 pm – 9:00 pm	<a href="#">Mark Herman</a>
	Tue	6:00 pm – 9:00 pm	<a href="#">Steve Wright</a>
	Wed	9:00 am - 11:30 am	<a href="#">Itziar Parramon</a>
	Wed	12:30 pm - 3:30 pm	<a href="#">Miguel Asmar</a>
	Wed	6:00 pm - 9:00 pm	<a href="#">Nita Sani</a>
	Thu	9:00 am – 12:00 pm	<a href="#">John Kruzel</a>
	Fri	6:00 pm – 9:00 pm	<a href="#">Jon Evans</a>
<u>FACETING</u>	Wed	6:00 pm - 9:00 pm	<a href="#">Tim Sandiford</a>
	Thu	6:00 pm – 9:00 pm	<a href="#">Bill Brisebois</a>
<u>BEG. METALS FABRICATION</u>	Sun	12:00 pm – 3:00 pm	<a href="#">Miguel Asmar</a>
	Mon	6:00 pm – 9:00 pm	<a href="#">Al Puente</a>
	Wed	6:00 pm – 9:00 pm	<a href="#">Tim Swann</a>
	Thu	9:00 am – 12:00 pm	<a href="#">Bud Green**</a>
<u>INT. METALS FABRICATION</u>	Tue	6:00 pm – 9:00 pm	<a href="#">Yvonne Juarez</a>
<u>ADV. METALS FABRICATION</u>	Wed	9:00 am – 3:00 pm	<a href="#">Denny Turner</a>
	Wed	9:00 am - 3:00 pm	<a href="#">Jackie Leverone</a>
	Thu	1:00 pm – 4:00 pm	<a href="#">Denny Turner</a>
	Thu	7:00 pm - 9:00 pm	<a href="#">Ellen Riceman</a>
	Fri	9:00 am - 3:00 pm	<a href="#">Jill Williamson</a>
<u>CASTING</u>	Tue	9:00 am – 2:00 pm	<a href="#">Dave Smith</a>
	Fri	7:00 pm - 9:00 pm	<a href="#">Rich Yarbrough</a>
<u>WAX CARVING</u>	Tue	9:00 am – 2:00 pm	<a href="#">Rose Feroah &amp; Lauren Holman</a>
<u>SPHERE MAKING</u>	Sat	1:00 pm - 4:00 pm	<a href="#">Paul Williams</a>
<u>JUNIORS</u>	Sat	9:30am - 12:30pm	<a href="#">Dave Smith</a>

\* If you have difficulty with using the link to contact an instructor it may be your computer/mobile device's restrictions or security settings. Please send an email to [school@sdmg.org](mailto:school@sdmg.org) for assistance.

\*\* Miriam Larson will substitute from 2/1/23 – 8/30/23

**SAN DIEGO MINERAL & GEM SOCIETY**  
**Board of Directors & Special Assignments (Non-board members)**  
7/1/2022 – 6/30/2024

**OFFICERS**

Dave Smith	President, Junior Coordinator, Casting Lead	<a href="mailto:president@sdmg.org">president@sdmg.org</a>
LuAnn Benton	Vice President, Friendship-Historian, Gem Diego Chair	<a href="mailto:friendship@sdmg.org">friendship@sdmg.org</a>
Ellen Riceman	Secretary	
Anne Schafer	Treasurer, Cab'n'Slab Chair, Donations Chair	

**DIRECTORS**

Bill Brisebois	Faceting Lead (1 of 2)	
Mark Herman		
Lee Jackson	Christmas Potluck Chair	
Yvonne Juarez	Scheduler (of workshops), Silver Lead, Website	<a href="mailto:admin@sdmg.org">admin@sdmg.org</a>
Simon King	Shop Director	<a href="mailto:school@sdmg.org">school@sdmg.org</a>
John Kruzal	Cabbing Lead (1 of 2)	
Jim Parrish	Mineral Division Chair, Museum Curator, City Liaison, December Nights Chair	
Itziar Parramon		
Doug Peeler	BBQ Chair	
Dave Rose		
Nita Sani		
Larry Shute		
Jennifer Stapp	Scholarship Chair	
Tim Swann		
Paul Williams	Cabbing Lead (2 of 2)	
Rich Yarbrough	Assistant Shop Director	

**SPECIAL ASSIGNMENTS (Non-board members)**

Donna Beers	Librarian	
Angela Cannon	Membership Secretary, Badges Chair	<a href="mailto:membership@sdmg.org">membership@sdmg.org</a>
Mike Frye	Building Superintendent	
Mike Harkleroad	Faceting Lead (2 of 2)	
Jackie Leverone	Advanced Metals Lead	
Sally Parrish	Auditor	
Lisbet Thoresen	Bulletin Editor, Public Lands	<a href="mailto:editor@sdmg.org">editor@sdmg.org</a>

**Vacant Positions**      *Banquet Chair, CFMS Representative*

\*\* Please use [info@sdmg.org](mailto:info@sdmg.org) to contact anyone without an email address shown above \*\*  
A number after a name means there is more than one contact person  
for a position (e.g., Bill Brisebois, Faceting Lead (1 of 2)).





**San Diego Mineral & Gem Society**  
 A Non-Profit Educational and Scientific Organization  
 1770 Village Place, Balboa Park  
 San Diego, CA 92101-1651  
[sdmg.org](http://sdmg.org)

## WELCOME!

The SDMG Building  
 is located  
 at the north end of  
 Spanish Village  
 in Balboa Park

SDMG Museum hours:  
 11:00am to 4:00pm

Get information  
 on classes, events,  
 field trips, reports,  
 reviews, slideshows  
 and more at:  
[sdmg.org](http://sdmg.org)

## ADDRESS SERVICE REQUESTED



## THE PEGMATITE – JUNE 2023

Sun	Mon	Tue	Wed	Thu	Fri	Sat
28	29	30	31	1	2	3
4	5	6	SD County Fair 7 Opening Day 11 AM to 10 PM 	8	9	10
11	12	13	14	15	16	17
18	SDMG Board Mtg 7PM Virtua 	20	21	22	23	24
25	SDMG General Mtg 7PM SDMG bldg 	27	28	29	SDMG membership renewal for 2023/24	1