



San Diego Mineral & Gem Society  
A Non-Profit Educational and Scientific Organization

# THE PEGMATITE

June 2024



**SAN DIEGO COUNTY FAIR  
GEMS & MINERALS DEPT.**

**Deliver Your Entries:**  
**Sat & Sun, June 1 & 2, 2024**  
**from 9 am to 6 pm**  
*fair details on pg. 8*

Volunteers needed at the Fair  
*Demonstrators, Sandbox duty, QA for public*  
*details on pg. 9*

.....  
More on the SDMG & GSSD merger  
*details on pg. 5*

.....  
Jade Identification  
*by Bill Kordela*  
*article on pg. 7*

.....  
On the Go To a Show...  
*listings start on pg. 16*

.....  
Summer Workshop Schedule, *pg. 28*

Official bulletin of the San Diego Mineral and Gem Society

**Affiliations:** California Federation of Mineralogical Societies  
American Federation of Mineralogical Societies  
American Lands Access Association

**Sister Club:** Kingston Lapidary, Hull, England

**Publication:** *The Pegmatite* is published monthly (except July and August).

**Submission Deadline:** 3rd Tuesday of the month preceding next month's publication, unless otherwise indicated.

**Membership:** Anyone with an interest in minerals, fossils, lapidary, gems, or hand-crafted jewelry may join the Society.  
Contact: [membership@sdmg.org](mailto:membership@sdmg.org)

**Liability:** The San Diego Mineral & Gem Society is not and cannot be held responsible and liable for personal injuries, for damage or loss of property at any meetings, field trips, classes, shows, or any event sponsored or recommended herein.

**Copyright:** ©2024 San Diego Mineral and Gem Society  
Non-commercial reprint permission given, unless otherwise noted, provided proper credit is given.

**Street Address:** 1770 Village Place  
San Diego, CA 92101-1651

**Mailing Address:** P.O. Box 710783  
**(membership apps)** Santee, CA 92072  
attn: Angela Cannon

**Phone:** 619-239-8812

**Website:** <https://sdmg.org>

**Editor:** Lisbet Thoresen, [editor@sdmg.org](mailto:editor@sdmg.org)

**Layout, Advertising:** [info@sdmg.org](mailto:info@sdmg.org)

**General Information:** [admin@sdmg.org](mailto:admin@sdmg.org)

**Change of Address:** [membership@sdmg.org](mailto:membership@sdmg.org)

**Exchange bulletins:** Send to: [editor@sdmg.org](mailto:editor@sdmg.org)

The mission of the San Diego Mineral and Gem Society is to disseminate knowledge of mineralogy and earth sciences; to encourage the study of these subjects; to conduct classes in mineralogy and lapidary arts; to conduct field trips for the collection and study of specimens; to encourage interest in mineralogy and lapidary arts among young people; and to procure and maintain a collection related to the earth sciences and lapidary arts.



## PRESIDENT'S MESSAGE

June 2024

*by Dave Smith*

[president@sdmg.org](mailto:president@sdmg.org)

**WE ARE AT THE END** of our calendar year, and we'll have an election for our slate of officers and board members this month. Ballots were sent electronically via eBlast on May 28th. I am reminding members in good standing to please vote "Yes" or "No" on the full slate by June 17th. We'll send out a reminder via Constant Contact on or about June 10th.

I wish to recap some highlights of events and activities that we enjoyed this past year. The Fall Workshops began in September 2023, with our shop utilizing a new slab saw cleaning system. **Bill Kordela** spoke on the **World of Jade** to launch the first General Meeting of the subscription year.

In the month of October, SDMG's **Gem Diego Show** returned after a six-year hiatus but at a new venue – Liberty Station Conference Center in the Point Loma neighborhood near San Diego harbor. **LuAnn Benton** chaired the event, and thanks to her tireless efforts and her team's as well, we had a very successful show, with two days of dealers, demonstrations, and wonderful displays. **Helen Serras-Herman** was our guest speaker at the General Meeting, where she gave a wonderful presentation about **Must-see gemstone mines in the US**.

November had the **Juniors** going a field trip to the **Oceanview Mine**. It was a fun day, and we owe **Jeff Swanger** a great debt of thanks for ensuring our youngest members would have a memorable experience at one of San Diego County's famous gem mines. At the General Meeting, **Richard Edley** spoke about his personal experiences **Prospecting and mining in Southern California**, which included his emerald find in the Julian mining district.

The month of December began with SDMG's Open House during Balboa Park's **December Nights** holiday festivities. We welcomed visitors to tour our workshop and see demonstrations of various lapidary arts. **Jim Parrish** and his volunteers took charge of organizing the selling tables, which were laden with a wide variety of mineral-related items for sale. The public swept up the bargains laid out before them. The last official SDMG event of the year was our annual **Christmas Potluck**. Thanks to **Lee Jackson** for stepping up to organize it, and thanks to the volunteers who helped set up and breakdown the event space and run the Silent Auction, Door Prize Raffle, and Ornament Contest. It was a lot of fun, and no one left hungry.

The first General Meeting of the New Year featured **Lisbet Thoresen's** presentation on **The cultural history of garnets** dating from Pharaonic Egypt to the early Middle Ages in Europe. She did a wonderful job.

At the February meeting, former SDMG instructor **Paul Kloppenborg** spoke about **Unusual and uncommon silver chain creation**. He provided tutorial handouts and showed some truly inventive designs. For the March meeting, **Jim Parrish** gave a report entitled **Eighteen days in Tucson**. It featured images of recent finds, his personal observations as well as stories shared by dealers Jim sought out at the show.

In April, **Wayne Moorhead**, **Mike Harlow**, and **Anne Schafer** oversaw an **Equipment Sale** at the Clairemont storage garage. Despite a light turnout, they had a good showing and accomplished the goal of thinning out a garageful overflowing with stuff. During the spring, **Dr. Marcus**

**Origlieri** coordinated the vetting of scholarship candidates with department heads at San Diego State University. The successful nominees were **Nick Oliver**, for geology, and **Maryam Kashani**, for jewelry arts. They were formally awarded their scholarship checks at the April General Meeting and gave short talks related to their studies. **Al Puente** was the featured speaker in April. He gave a presentation on **The art of repoussé**, showing designs inspired by Native American jewelry.

At the May meeting, **Gretchen Ainsworth** gave a presentation on **Turquoise**. A longtime member of **SDMG** and **San Diego Lapidary Society & Art Center**, **Gretchen** has a vast collection of turquoise specimens. It was interesting to learn

about her personal experiences about self-collecting and building her collection over the years.

As outgoing president of SDMG at the end of this month, I want to thank all the SDMG members and guest speakers who contributed their hard work, talent, and expertise toward producing our events and programs over the past two years of my tenure. Your willingness to help out and volunteer when your Society needed you has made all of our activities possible, and it has made them enjoyable for everyone and personally rewarding for me. Thank you



### SDMG General Meeting

Monday, June 24, 2024 7pm

SDMG bldg.

*Dave Smith, President*

**GERRY ALVARADO**, well-known to all as the Gem Guru and manager of **The Miner's Gems** shop in Old Town, will be presenting a talk on **Opals** for the last meeting before the summer hiatus. This gemstone's play-of-color phenomenon manifests dazzling variations of flashing colors and patterns, making each stone unique. No wonder Opal is one of Gerry's favorite gemstones. He'll bring some to show during his presentation and members are encouraged to bring theirs as well.

We'll have coffee, iced tea, and any snacks that you would like to share. There will be door prizes as well. Our meeting location is in the San Diego Mineral & Gem Society building at Balboa Park, adjacent to Spanish Village (the largest building located at the back). The public is welcome!



Two of Gerry Alvarado's Opals.



## JUNIOR DIVISION NEWS

*by Dave Smith  
Juniors' coordinator*



**Left:** Some of the Juniors outside the workshop last December. Matt with sister Alice, Renzo, and David. **Right:** Aaron helps clean up the workshop. Photo: Dave Smith.

**W**E ARE MOVING HEADLONG into Summer and that brings the **San Diego County Fair** into focus. We have three families signed up as volunteers to cover the sandbox of “buried treasure” at the **Gem & Mineral Department** at the Del Mar Fairgrounds. There are still three 2-hour slots available. Please contact assistant coordinator **Jennifer Stapp** at 858-829-1723 or [cat333@gmail.com](mailto:cat333@gmail.com) if you would like to lend a hand. A free ticket to the Fair is provided to both the Junior volunteer and their parent chaperone.

We still need to produce some finished cabs for our educational case at the Fair, so please

bring any new cabs to the first class in June. Last year’s exhibit was a standout! It was one of the best displays the **Junior Division** has ever shown at the Fair. Let’s see if we can do as well this year!

We’ll continue classes throughout the Summer. Our class is open to children between 12 and 17 years of age. We meet at San Diego Mineral & Gem Society building located next to Spanish Village on Saturdays from 9:30 am to 12:30 pm.



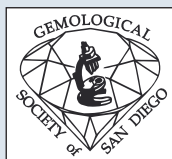
## Workshop News

Yvonne Juarez, Coordinator

The spring workshop session ends with the Juniors' class on Saturday, July 1st. Most, but not all instructors will have workshops during the summer. Check the SDMG website for the summer workshop schedule toward the end of June at: <https://sdmg.org/class-schedule/summer-schedule-2024.pdf>. This schedule is sure to be updated, so refresh your browser to obtain a fresh copy from the server whenever you visit the website.

If you don't see the instructor you're looking for on the schedule listed, email me at [school@sdmg.org](mailto:school@sdmg.org) and I'll assist you.

The shop will be closed officially from July 2–7. Check with your instructor to verify the duration of workshops over the summer.



## GEMOLOGICAL SOCIETY of SAN DIEGO

GSSD General Meeting  
Monday, June 3, 2024  
7:00 pm SDMG Building

**THE JUNE MEETING** is our semi-annual **Silent Auction**. We will have a brief meeting, the auction, and where we usually have finger foods, let's just make it a "bring what you like" and would like to share. The silent auction is open to everyone and you can bring your homemade goods, raw material, cut stones, tools, books, magazines, specimens. We've even had a few plants and fun things as well, and of course, bring money! At the end of the meeting everything is tallied up by each seller and everything but a mere 10% is yours to keep on the items that you sell. Silent Auction slips and pencils provided. Cash and checks gladly accepted.

We are moving ahead with the merger of GSSD into SDMG. When we return from the summer break we will be the **Gemological Division** of **San**

**Diego Mineral & Gem Society**. There are many advantages to this merger. Dues may increase for some of our members, but many of you are already members of SDMG.

To all of our members, new and old, thank you for all your support of GSSD throughout the years. We will work on the possibility of a new beginning and first-year class this Fall. We will meet every other month once the Fall session begins. **Jim Parrish** looks forward to starting up the **Mineral Division** in October, so we can look forward to attending his meetings as well. (Look for a write-up in the September bulletin.)

Please join us, refreshments will be available, and if you care to, bring something to share!

## *Kruzel's Cabochon Show & Tell*

No, you are not seeing triple! Brett Updyke almost swept the month of May for the coveted gold medal. It just goes to show that persistence pays off. It was good work and not cookie bribes that won the gold this month. I don't think Brett knows his way around the kitchen as well as he does the cab shop. Ted Yeats tripped up Brett in the second week grabbing the gold. Only four more weeks left in this year's cabochon classes. June will be the last month for classes in this school year.

As a reminder, at the end of every Thursday Cab workshop, all the students show what they worked on that day, sharing what type of stone it is, and what they did to make it look good. The students then vote on the person they think did the best job on their cabochon. The prize is having their picture taken, holding their cabochon, while wearing a coveted gold medal, which is then posted in *The Pegmatite* bulletin.

*Congratulations  
to all on your  
beautiful cabochons!*



Jessica Christensen – May 2



Brett Updyke – May 9



Ted Yeats – May 16



Brett Updyke – May 23



Brett Updyke – May 30

## Jade Identification

by Bill Kordela

**THE FIRST QUESTION** regarding any rock, mineral, or gem is why jade identification is important. First, a few facts of interest regarding jade. It is one of the few rocks that are accepted by most major international rock and gem associations as two different rock types composed of different minerals. The two mineral mixes accepted as jade are Nephrite and Jadeite. Both are unique in the world as the toughest material found in nature.

Diamond is nature's hardest mineral, but jade is nature's toughest. This means diamond can be crushed by a hammer, while jade holds its shape. This property makes jade a durable gem material excellent for carving. According to International Gem Society course publications, jade is ten times rarer than diamond. Jade, unlike diamond, has no man-made synthetic simulants. Jade occurs in many countries including China, Burma, Japan, Russia, Europe, New Zealand, the United States, Canada, and Australia. The use of jade dates back to ancient times including the Mesoamerican Aztec and Mayan civilizations. Historically, jade has been used in cultures throughout the world. It is seen in antique jewelry, tools, weapons, and carvings.

Jade has hundreds of look-a-like imitations sold worldwide as "jade." This is why jade identification is necessary. As noted above, jade is found not only in China, but also in other countries worldwide. A lot of locality-specific features establish standards for rareness and value. This is another reason why jade identification is important. Jade is not just a green-colored stone, but is found in many colors of the rainbow, which adds to its special attributes for rarity, value, and collectability. Jade can be colorless to multi-colored, and it can be transparent, translucent, or opaque, with location, rarity, and interest affecting its value. Jade is also found in other rocks and mineral assemblages and en matrix, so knowledge about separating identifying characteristics is necessary.



Jade identification and testing is easier to apply with rough materials from mining sources and sales sources (i.e., stores, shows and internet) because more tests can be applied. Finished materials have fewer testing options. They are often treated by methods that make detecting imitations or enhancements challenging. Rough material identification includes comparison, touch, weight (heft), hardness, ring, fracture, crystallization, conductivity, thermal and magnetic testing, water spray, transparency/translucency, polariscopic reaction, refractive index, and specific gravity. Finished products are much more difficult to identify conclusively, especially at point of sale, since most testing is not allowed before purchase due to possible damage caused by testing or problems of specimen size or instrument capabilities.

**About the author.** Bill Kordela is a gemology school trained Jade specialist with over 30 years of collector field experience. High in both value and experience are the many years of training and time he spent with Roger Merk, FGA, who is recognized as the best Southern California Jade expert. Bill has developed his Jade knowledge locally, with presentations and displays at GSSD, SDMG and PGMCC. Bill has a background in science, with degrees in electrical and scientific research.

For students interested in jade identification, the author will be offering a three-day, hands-on jade identification class in the fall of 2024 at the SDMG building, located at the back of Spanish Village in Balboa Park. Space is limited. For further details and reservations, please contact Bill Kordela at 619 851-4430 or [edwilbill@aol.com](mailto:edwilbill@aol.com).



## SAN DIEGO COUNTY FAIR GEMS & MINERALS DEPT.

Anne Schafer, Supervisor  
Jennifer Stapp, Asst. Supervisor

**Thanks to all of you who have entered exhibits!** We've had lots of terrific entries for gems, minerals, fossils, faceting, jewelry and lapidary.

**There will be cases filled with spheres,** rhodochrosite, fossils, beautiful geodes, a GIA exhibit, fluorescent minerals, a select portion of the famous Rock Feast, colorful petrified wood, a rainbow array of mineral specimens, metalwork in two classes – amateur and professional – and much more.

**In the individual classes, there will be plenty of faceted gems,** including **garnet**, which is the **faceted gem of the year**, petrified wood, the Mineral of the Year **Minerals of Africa and Madagascar** entries, fossils, cabochons and carvings. Did I mention jewelry? There will be **Jewelry** entries in every class. You'll see creative, imaginative designs featuring constructed, cast, wire-worked, enamel, chainmaking and other techniques, as well as the ever-popular Art Jewelry classes.

### DATES TO REMEMBER

Entry Delivery:	Saturday & Sunday, June 1 & 2, from 9 am to 6 pm
Opening Day of the Fair:	Wednesday, June 12
Exhibitor Appreciation:	Saturday, June 15, 7 – 9 pm
Last Day of the Fair:	Sunday, July 7th
Closed Days:	Every Monday & Tuesday
Entry Pickup:	Tuesday, July 9, 9 am to 8 pm

### DEMONSTRATIONS AND SAND PILE “DIG FOR TREASURES” VOLUNTEERS

We are always looking for volunteers to help kids screen for tumbled stones in the Dig for Treasure “sand pile,” and to demonstrate faceting, silversmithing, fossil prep, field trip activities, etc. Please contact **Jennifer Stapp** to sign up for a two-hour shift. You will receive a free ticket to the Fair, and (we hope) a free parking pass. Free parking/bus transportation will also be available at Canyon Crest Academy this year, instead of Torrey Pines High. (Fair insiders know that off-site parking is a great way to save money, and have fun... by making the Fair shuttle your first “ride” of the day!)

### QUESTIONS? SOMETIMES WE HAVE ANSWERS! Please contact us:

Supervisor Anne Schafer at 858-586-1637 or [Agate.Annie2@gmail.com](mailto:Agate.Annie2@gmail.com)  
Asst. Supervisor Jennifer Stapp at 858-829-1723 or [cat333@gmail.com](mailto:cat333@gmail.com)

Thanks to all of you who submitted entries,  
ensuring that 2024 will be another memorable Fair year!



## *We need your help as a volunteer this summer*



### **SAN DIEGO COUNTY FAIR GEMS & MINERALS DEPT.**



*Del Mar Fairgrounds*

**June 12 – July 7, 2024**

#### **Want to help make the fair a success?**

##### **Volunteer for two-hour shifts:**

*Children's sandbox of "buried treasure"*

*Demonstrators*

*Answer Questions (supervisor will train you)*

**The times for each day are 11-1, 1-3 and 3-5**

#### **How do I sign up to Volunteer?**

**Contact Asst. Supervisor Jennifer Stapp**

858-829-1723 or [Gems@SDFair.com](mailto:Gems@SDFair.com)

*Besides the satisfaction of volunteering,  
you'll be rewarded for your effort  
with a free Fair ticket and parking pass*

SDMG and other clubs throughout San Diego get involved in the Gem & Mineral Department by signing up to demonstrate skills or to run the children's sandbox filled with tumbled rocks.

Volunteers are needed who can demonstrate faceting, metal fabrication, sphere making, casting, rock carving, wax carving, chain making, wire wrapping, or answer questions and explain what you are doing. People are mesmerized when they see these skills demonstrated before their eyes.

Children are intrigued by the sandbox, but they need to be shown how to dig for "buried treasure." They also need help identifying the minerals/rocks they choose to take home for free. (There are two displays with pictures of rocks and their names to help you identify them.)

The physical presence of volunteers and their interaction with the public is a big part of what makes the Fair a success. It's fun for the kids and also for the adults who are still kids at heart.

**Tips from the Past:**  
**Cabbing Man's Corrective Actions to Rockhounding Problems**  
 submitted by LuAnn H Benton, SDMG Historian\*

Symptom	Problem	Corrective Action
Ground excessively hard, screeching sounds screeching sounds	Digging in highway	Put 500 "Road Construction" signs on road for 10 miles
Heaviness on shoulders, restricted movement	Backpack still on	Remove backpack
Car bumper dragging	Car overloaded with rock	Buy a truck
Difficulty lifting feet	Water in boots	Drill holes in bottom of boots
Water running in eyes,	Thunderstorm	Get umbrella
Shovel suddenly jumps, barking sound	Leash wrapped around shovel handle	Wrap leash around leg
Pain in stomach	Hungry	Eat
Sudden severe chest pains	Heart attack	Keep digging until EMT comes
Person digging next to you finds good material	Person digging next to you has a better spot	Tell them you hear their spouse calling them
Sharp pain in thumb	Difficulty aiming your rock hammer	Let someone else hold the #@\$% chisel
Rock slide in yard	Too many rocks	Build gate to neighbor's yard
Good material on cliff	Very dangerous to dig	Have spouse dig for you
Kid-found clear, red golf ball-sized material that easily scratches topaz	Trash	Give to Cabbing Man to dispose of properly

\* Reproduced from *The Pegmatite* (2008 June-July-August) San Diego Mineral & Gem Society, which originally appeared in *The Coastal Plain Geode* (1999 March) via *The Tumbler* (1999 April).

## Friendship, and Who & What's News

photos and article by LuAnn H. Benton, Friendship Chair

friendship@sdmg.org

I, **LuAnn H Benton**, suffered an injury on the chop saw while teaching students how to use the machine in the Rock Carving Workshop. When I turned it on, the saw guard rattled, which it hadn't like that before, and the belt seemed too loose. I absentmindedly reached for the belt to feel how loose it was, and it pulled my left index and middle finger into the belt grooves, bruising badly the middle finger but cutting and breaking the bone in my index finger just above the nail. Needless to say, shop stopped, and the students pulled out the first aid kit and we all took care of it before my husband arrived to take me to the ER.

I am a prime example of someone getting lax and not paying close attention, when I am around these machines I use often. I told my students, "This is NOT what you do." I mention this, because rarely do we have major incidents, and recently people have been bringing up things that could have been a real major issue. We do need to be actively mindful and make sure these machines are safe. It's also a reminder that it doesn't take a sharp tool to cut or break bones. So, be very alert when around these machines and learn from other's mistakes such as mine.

**Mike Harkelroad** looked at the machine for me to see what could be done, and he ended up making a sturdy metal



Fig. 1 Chop saw belt guard.

guard from his father's old metal screen (**fig. 1**). It's very nice and covers the belt quite well. Mike, you do wonderful work and we in the Rock Carving Workshop truly appreciate this safety guard as well as all you do on behalf of SDMG. Thank you very, very much!

I want to present to all SDMG members **The Sphere-Making Workshop**. Many people have no idea just how this process works to produce the beautiful round spheres showcased in the SDMG Museum. SDMG instructor **Paul Williams** and sometimes several students demonstrate sphere making at most SDMG events such as the San Diego County Fair on weekends, the Gem Diego Show, and SDMG's Open House at December Nights in Balboa Park.

On Mother's Day last year and again this year, a past student who took a break to have children came back to work on some spheres. She came back the following

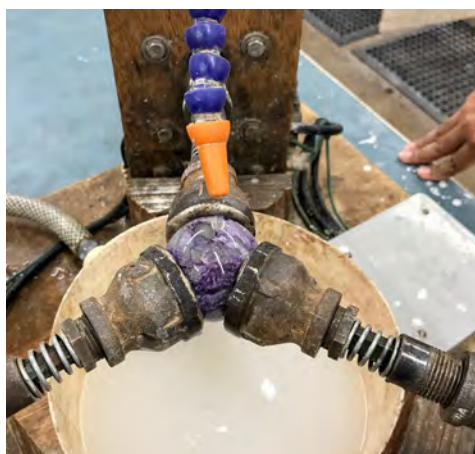


Fig. 2 (right) Olivia working on her sphere.



weekend as well, and what a pleasure it was to have her around again, even if only briefly. Her older child is four years old and the younger one is now two. Both are helping her with tumbling, cleaning, and collecting rocks. **Olivia Espinosa** was seen manning her sphere while it turned in many odd directions to ensure it was grinding the outer contours uniformly to make it round (**fig. 2**). The machine requires constant attention to ensure the shape of the sphere doesn't become lopsided (**fig. 3**).

We'd love to have you join this wonderful workshop on Saturdays from 1:00 pm to 4:00 pm. You'll have to bring your own rock. The smallest finished sphere

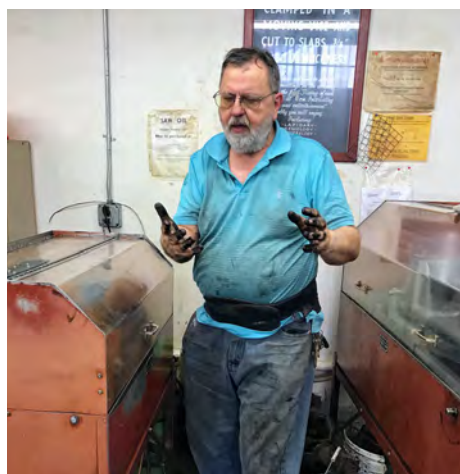


**Fig. 3** Olivia's Charoite Sphere in the making.



**Fig. 4** Finished Silver Lace Onyx Sphere.

size that can be made is a little under 1.5" diameter, but you can make a larger one if you like. You'll learn how to cut your rock on the big slab saws, and yes, you'll learn how to clean the machines properly. Keep your beautiful sphere specimen for your collection or give away as a gift (**fig. 4**).



**Figs. 5, 6** "What a Mess!" Paul didn't know I was taking this picture (*left*), but he did in this one (*right*), after fixing the 18" slab saw pulley and belt.



**Fig. 7** Paul fixing the trim saw belt and pulley. Again, a greasy job!

Here's **Paul Williams**, the sphere instructor and long time board member, after reinstalling the pulley that came off of the 18" slab saw (**figs. 5, 6**). Another shot captures him while working on the small trim saw in the cabbing room where the pulley and belt also came off (**fig. 7**). It's a messy, greasy job, but

somebody's got to do it! Thank you, Paul!

Help keep our workshop tools in good working order and properly stored. Please step up and help take care of tools everyone uses. Any and all help will be greatly appreciated by those who have been doing it for many years.



Have you already been on or going on a vacation?

Gone rockhounding with a friend, spouse,  
partner or group?

Is anything happening in your life that you'd like  
to share with SDMG?

Want to make it funny, please do,  
so everyone can enjoy.

Include name and phone number  
(for contact purposes only).

I'll take care of any necessary corrections you may need.

Send to LuAnn via [friendship@sdmg.org](mailto:friendship@sdmg.org)  
I really want to hear from YOU!



There is a mailbox slot in the casting room  
for **Suggestions** you may have for SDMG.  
We value your input!



Your Name Here  
San Diego Mineral &  
Gem Society

Would you like your name on a **SDMG BADGE** to wear at meetings or other activities? Order by contacting **Angela Cannon**, the Badge Chairman at: [membership@sdmg.org](mailto:membership@sdmg.org).

The price per badge with a standard magnetic holder is \$15.00 plus tax & shipping.

A badge with the pin back is \$14.00. If you have a pacemaker, please order the pin back.

The badge measures 1" x 3". It has a white background with black lettering (see sample above).

If five or more badges are ordered, the cost is \$14.50 per badge (magnetic or pin back) and shipping is free.

## SDMG Membership...

### New Applications & Renewals for 2024–2025

The membership year “officially” starts on July 1st. There is no pro-rating of dues, so it doesn’t matter when you sign-up or renew – all memberships for 2024–2025 will expire on June 30, 2025. **Now is the perfect moment to renew your membership for 2024–25!**

There are two ways to apply for or renew your membership –

1.) Send a check with your membership form to the membership secretary. The renewal form can be found on the **SDMG** website at:

[sdmg.org/pdf/sdmg-membership-app-and-renewal.pdf](https://sdmg.org/pdf/sdmg-membership-app-and-renewal.pdf)

**OR**

2.) Sign up online using major credit cards via PayPal. Visit the SDMG website for details at:

[sdmg.org/sdmg-membership/](https://sdmg.org/sdmg-membership/)

Membership renewals are usually mailed to current members in late May or early June, and are typically “due” before classes begin in September, because people must be current members to attend fall workshops. Some just pay their membership dues in class, on the day they show up, which is fine.

**Subscribe yourself to the eNewsletter at:**  
<http://bit.ly/SDMG-news>

*Published from September thru June  
at the same time as*

*The Pegmatite bulletin (PDF online version)*

(Members, you must subscribe yourself,  
we cannot do it for you!)

## Report on the 2024 spring DAC Meeting of the BLM

by Lisbet Thoresen, SDMG public lands representative

**T**WENTY-FOUR MEMBERS of the public participated in the **Desert Advisory Council (DAC)** Zoom meeting hosted by the **Bureau of Land Management (BLM)** on April 27, 2024. Recreational interests are well-represented on the council at this time, with four members, including DAC chair **Hans Hesse, Jennifer Henning, Richard Holliday, and Joshua Martelli** (commercial recreation). One of two public-at-large members, **Randy Banis**, who has been a long-standing and effective advocate of OHV and other recreational interests, was not present at the meeting.

The meeting agenda did not include the proposed **Chuckwalla National Monument** or a status update on the management plan for **Mojave Trails National Monument**, but both were topics of discussion during the public comment period. Conservationists and recreational advocates including Rockhounds appeared to have been well-represented, or at least they were the most vocal participants during the comment period.

The comments related to **Chuckwalla** mostly focused on a letter sent to the **Department of the Interior** advocating the creation of a national monument. The letter was signed by some **DAC** members as well as members of desert conservation organizations. Critical remarks about the letter came mostly from recreational users, including **DAC** members who oppose the monument designation. Some of them alleged lack of public transparency in preparing the letter and then sending it with signatories that included other **DAC** members, which some people thought gave the impression that the council itself had given its official imprimatur (when it had not) supporting the monument designation for **Chuckwalla**.

**Richard Holliday** was more measured in his criticism (he's "No" on **Chuckwalla**), observing that not much area can be "used" because most of the proposed monument footprint is already under protective designations, e.g., Wildness. Other critics voiced concern that access to Rockhounding areas were at risk of being lost, including the **Hauser Geode Beds**, which currently is covered by an MOU between **BLM** and the **California Federation of Mineralogical Societies**.

Some conservationists have proactively advocated for rockhounding accommodations in **Chuckwalla** (and **Mojave Trails**), but they tend to get lumped together with other conservationists who are staunchly anti-rock collecting. That's a shame. Counter-productive too. The Rockhound community could use all the help it can get.

Our bigger shared concern should be industrial sprawl of renewable energy projects in the desert, which will harm the interests of both conservationists and Rockhounds. Once again, **Richard Holliday**, formerly an energy industry insider, offered a constructive appraisal on recreational uses for BLM to consider:

**BLM took in \$31mln for recreation use fees and only \$14,000 for solar fees [last year]. There is overproduction currently on industrial solar projects in the desert.**

It remains to be seen what role **BLM** will have in managing **Chuckwalla**. Can't start too soon to engage the public in the process. However, it seems clear enough, if not explicitly said out loud by anyone, that **BLM** is waiting for **Mojave Trails** to be finalized before drafting management plans for other monuments.

Conservationist **Frazier Haney** spoke up in support of this author's (LT) comments, which included the following request for information from **BLM** regarding **Mojave Trails**:

1. Who is drafting the plan since Noelle Glines-Bovio departed as monument manager?
2. What is the timeline for the management plan?
3. May we please look forward to a 60-day comment period on the proposed draft plans?
4. How are the **Desert Renewable Energy Conservation Plan** and the **West Mojave Route Network Plan** being reconciled into the drafting of the management plan?
5. What changes to the **California Desert Conservation Act** are being made as they relate to recreational activities? Are definitions being made more clear for low impact versus high impact activities? What about casual collecting (i.e., Rockhounding) specifically?

Stay tuned...

**SDMG NOMINATING COMMITTEE FOR 2024–2026***LuAnn H. Benton, Nominating Committee Chairperson*[benton.luannz@gmail.com](mailto:benton.luannz@gmail.com)

The Nominating Committee has selected the following slate of four (4) officers and fourteen (14) directors for the two-year term from July 1, 2024, to June 30, 2026. This slate (shown below) satisfies the requirements of the San Diego Mineral and Gem Society Bylaws in that the people named are members in good standing and have agreed to be nominated.

**OFFICERS**

<b>For President:</b>	LuAnn H. Benton
<b>For Vice-President:</b>	Jim Parrish
<b>For Treasurer:</b>	Anne Schafer
<b>For Secretary:</b>	Ellen Riceman

**BOARD OF DIRECTORS**

Bill Brisebois	Nita Sani
Mark Herman	Larry Shute
Yvonne Juarez	Dave Smith
John Kruzel	Tim Swann
Itziar Parramon	Brendan White
Doug Peeler	Paul Williams
Dave Rose	Rich Yarbrough

### **SDMG Bylaws on electing officers & board members**

No petitions for alternate candidates were received at the May 20, 2024, Board of Directors meeting, the deadline for submitting such petitions. In the absence of petitions for alternate candidates, the nominations shown above were carried forward to electronic balloting, which commenced on May 28, 2024 via Constant Contact. Members in good standing have until Monday, June 17, 2024 at 8:00 pm PDT to vote via email ballot.

I would like to thank all the members of the Nominating Committee for their service.

**ABOUT VOTING**

To facilitate more participation of our membership, voting is being administered electronically instead of the usual in-person General Meeting in June. The ballot is embedded in an email sent to members via SDMG's Constant Contact bulk email account, the same account we use to send our monthly eNewsletters.

**Electronic ballots were emailed via Constant Contact on May 28, 2024**

**The deadline to vote is Monday, June 17, 2024, 8:00 pm PDT**

**WHO IS ELIGIBLE TO VOTE?**

If you are a member in good standing, you are eligible to cast your electronic ballot by voting "Yes" or "No" on the full slate of nominees as shown in the May 28th mailing.

If you have an issue with casting your ballot because of the slate, please email [Jim Parrish](mailto:Jim.Parrish@sdmg.org) before June 17th.

**DIDN'T GET A BALLOT?**

First, to ensure our emails land in your Inbox, please be sure to add our Constant Contact email address to your address book:

[editor-sdmg.org@shared1.ccsend.com](mailto:editor-sdmg.org@shared1.ccsend.com)

Check your junk/spam folder.

**OTHER COMMON ISSUES.**

You may not have provided an email address when you became a member. Sometimes multiple-member households use the same email address for each member in their family. An email ballot can only be sent once to one email address. Finally, Constant Contact sometimes suspends email accounts based on their own standards. (We have no control over this.) If you would like help getting emails from us that should but are not showing in your InBox, please contact [editor@sdmg.org](mailto:editor@sdmg.org) no later than June 15th for assistance.

## ON THE GO ... TO A SHOW



### JUNE .....

#### 4-5 LANCASTER, CA – AVGMS Annual Gem & Mineral Show

**Sponsor:** Antelope Valley Gem & Mineral Club  
**Venue:** Antelope Valley Fairgrounds, 2551 West Ave. H, Lancaster, CA 93536

**Hours:** Sat 10am – 5pm, Sun 10am – 4pm

**Admission & Parking:** Free.

**Contact:** [marylandoriele@gmail.com](mailto:marylandoriele@gmail.com)

**Web:** [avgem.weebly.com](http://avgem.weebly.com)

Lots of vendors, displays and activities for individuals and families.

#### 8-9 ESCONDIDO, CA – Palomar Gem & Mineral Show

**Sponsor:** Palomar Gem & Mineral Club  
**Venue:** California Center for the Arts, Escondido Convention Center  
 340 N. Escondido Blvd, Escondido, CA 92025

**Hours:** Sat 10am–5pm, Sun 10am–4pm

**Admission:** \$5, **Kids 12 & under:** Free

**Parking:** Free

**Web:** [www.palomargem.org](http://www.palomargem.org)

#### 15 BELLFLOWER, CA – Rock & Lapidary Extravaganza

**Sponsor:** Delvers Gem and Mineral Society

**Venue:** Holy Redeemer Lutheran Church  
 14515 Blaine Ave., Bellflower, CA 90706

**Hours:** 10am – 4pm

**Admission & Parking:** Free.

**Web:** [delversgemclub.wordpress.com](http://delversgemclub.wordpress.com)

Parking lot sale featuring gems, minerals, equipment, plus odds and ends.

#### 29-30 CULVER CITY, CA – Fiesta of Gems

**Sponsor:** Culver City Rock & Mineral Club

**Venue:** Veteran's Memorial Auditorium  
 4117 Overland Ave., Culver City, CA 90230

**Hours:** Sat 10am – 6pm, Sun 10am – 5pm

**Admission & Parking:** Free.

**Contact:** Janice Metz, [culvercityrocks35@gmail.com](mailto:culvercityrocks35@gmail.com)

**Web:** [culvercityrocks.org/fiesta/](http://culvercityrocks.org/fiesta/)

This year the featured gemstone is Turquoise. Fossils, gems and mineral exhibits, tools, books, demonstrations, and children's programs.

### 2024 Palomar Gem and Mineral Club GEM SHOW Conference Center - Escondido California Center for the Arts Saturday June 8 2024- 10am to 5pm, Sunday June 9 2024- 10am to 4pm ADD IT TO YOUR JUNE 2024 CALENDAR

9000 SF of faceted stones, handmade jewelry, cabs, lapidary rough, minerals and more. GIA kids activities.

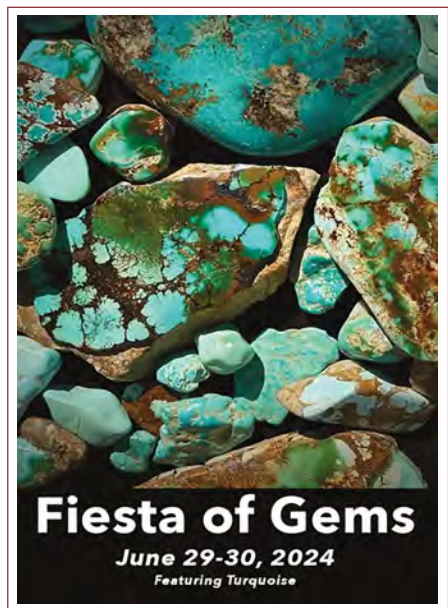
Admission \$5.00, kids under 12 free. FREE PARKING



Cal Arts Center - Conference center  
 340 N Escondido Blvd  
 Escondido, CA

Info at: [Palomargem.org](http://Palomargem.org)

Present this card to admissions for 5 grand prize tickets





# GEM DIEGO SHOW 2024



*San Diego's finest gem and mineral show*

**November 2–3, 2024**

Sat 10 am – 6 pm | Sun 10 am – 4 pm

**Liberty Station Conference Center**

2600 Laning Road ♦ San Diego, CA 92106

Thanks to our fantastic new venue in the Point Loma Neighborhood near San Diego harbor AND our Volunteers, Dealers & Exhibitors, in 2023 we had the best turnout in Gem Diego history. Help us do it again in 2024.

## **Help make Gem Diego a success**

Look for opportunities to Volunteer  
in September and Sign Up!

### **Volunteer Dates:**

Friday, November 1 – Sunday, November 3

## **Dealers**

Dealer spaces are already fully booked for 2024. Contracts will go out around mid-June. If you'd like to add your name to the wait list, please send the information listed below to Dealer Chairman **Garry Cannon** at:

[kf6doz@yahoo.com](mailto:kf6doz@yahoo.com)

*Include your name, how long you've been a dealer, what indoor lights you use, what you sell, as well as email, phone numbers, and address.*

## **All Chair positions are filled, except Secretary.**

**Job description.** Taking notes at the four remaining meetings, typing them up and emailing to LuAnn. That's it! Here's the schedule of our upcoming meetings for anyone who would like to join us:

Wed. July 17 at 7:00pm (virtual mtg)

Wed. Sept. 18 at 7:00pm (virtual mtg)

Wed. Oct. 16 at 7:00pm (at SDMG bldg in person to finalize everything)

Wed. Nov. 13, at 6:30 or 7pm (SDMG bldg for Follow-Up meeting Celebration Dinner (last one))

If you would like to apply for the Secretary position, please contact

**Gem Diego Co-Chair LuAnn Benton**

[benton.luannz@gmail.com](mailto:benton.luannz@gmail.com)

# Gem Diego Show 2024

## UPDATED INFORMATION FOR SDMG DEALERS

**Show Dates: November 2–3, 2024**

**Liberty Station Conference Center**

**Set-up: Friday, November 1, 1pm to 8pm**

**Show times: Sat, Nov 2, 10am to 6pm and Sun, Nov 3, 10am to 4pm**

The purpose is to help those who have a small business and want to enhance it. The items one sells must be related to gems, minerals, fossils, silversmithing and/or anything lapidary.

---

**Booths are limited. How to qualify.**

**To qualify for one of the three SDMG booths (two 8-foot tables) at the special price of \$450:**

- ✓ You must be a San Diego Mineral & Gem Society member.
- ✓ Have a California seller's permit.
- ✓ Sold at other venues.
- ✓ Use at least 2 lights per 8-foot table and use LED light bulbs (no more than 150 watts per 8-foot table) at indoor venues.

**AND** you must have participated in one of the activities listed below:

1. Teach a workshop currently.
2. Keynote speaker at a general meeting for SDMG or GSSD
3. Volunteer for two SDMG events
4. Chair a SDMG event
5. SDMG Board member
6. Officer of either SDMG or GSSD

---

**Dates for qualifying must occur between  
November 1, 2023 and October 1, 2024**

If two dealers are sharing a booth, at least one dealer must meet all qualifications. The second dealer must also be a SDMG member, sold at other venues and meet lighting standards.

You may apply when everyone else does, but you must meet all qualifications by October 1, 2024.

**Got questions? Please contact:**

**Garry Cannon, Dealer Chair – [kf6doz@yahoo.com](mailto:kf6doz@yahoo.com)**

**LuAnn H Benton, Show Chair – [benton.luannz@gmail.com](mailto:benton.luannz@gmail.com)**

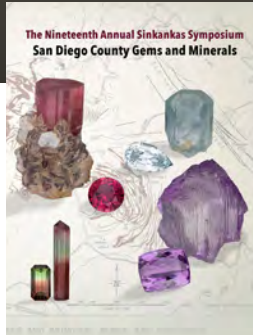
# Sinkankas Symposium Publications (2014 – 2023)

No symposium in 2024, but for a limited time,  
all 9 back issues will be available for pre-ordering  
**through June 28, 2024 (5:00 pm PDT)**

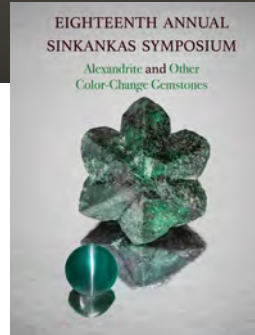
Pre-Order online direct from the print house at [sinkankas.dpidirect.com](https://sinkankas.dpidirect.com)

Orders begin shipping on Monday, July 17, 2024.

*This is the only print run scheduled in 2024, and no overstock will be available.*



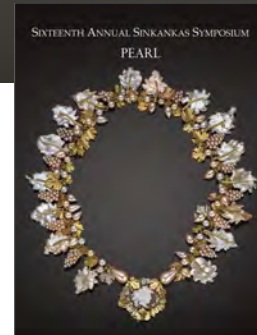
2023 – Nineteenth  
San Diego County  
Gems and Minerals



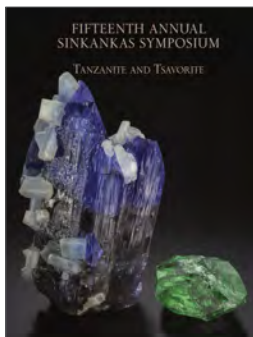
2022 – Eighteenth  
Alexandrite and Other  
Color-Change Gemstones



2021 – Seventeenth  
Agate and Chalcedony



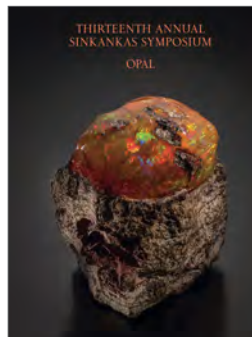
2019 – Sixteenth  
Pearl



2018 – Fifteenth  
Tanzanite and Tsavorite



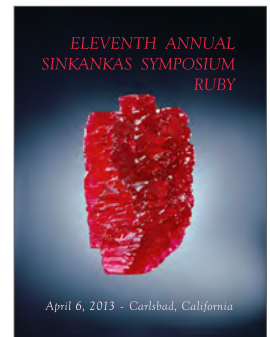
2017 – Fourteenth  
Sapphire



2015 – Thirteenth  
Opal



2014 – Twelfth  
Peridot and Uncommon  
Green Gem Minerals



2013 – Eleventh  
Ruby (rev. ed. 2014)

## Specifications

8.25" x 10.75", digital press, full color, soft cover, perfect binding.

## Cost

USD 42.50 ea. + sales tax (where applicable) + shipping (varies based on destination)

## Limited Offer

Orders placed between May 9 and June 28, 2024 will begin shipping on July 17, 2024. (This is the only print run for 2024; no overstock will be available. A symposium is being planned for Spring 2025. Look for details in early 2025 at [sinkankassymposium.net](https://sinkankassymposium.net).)

## Available Issues

2023: Nineteenth – San Diego County Gems and Minerals  
2022: Eighteenth – Alexandrite and Other Color-Change Gemstones  
2021: Seventeenth – Agate and Chalcedony  
2019: Sixteenth – Pearl  
2018: Fifteenth – Tanzanite and Tsavorite  
2017: Fourteenth – Sapphire  
2015: Thirteenth – Opal  
2014: Twelfth – Peridot and Uncommon Green Gem Minerals  
2013: Eleventh – Ruby (revised edition published in 2014)

# WEST COAST GEM & MINERAL SHOW

Holiday Inn-Orange County Airport  
2726 South Grand Avenue ♦ Santa Ana, CA 92705

**November 8-9-10, 2024**

Fri & Sat 10 AM to 6 PM

Sun 10 AM to 5 PM

(Wholesale closes at 4 PM on Sunday)



Kutnohorite from the Kalahari Manganese Fields, South Africa.  
Specimen and photo: Laura Delano.

*80 Select Retail  
& Wholesale Dealers*

Minerals ♦ Gems ♦ Lapidary ♦ Beads ♦ Jewelry  
Fossils ♦ Decorator Pieces ♦ and much more!

FREE ADMISSION ♦ FREE PARKING ♦ OPEN TO THE PUBLIC

[www.MineralShowsLLD.com](http://www.MineralShowsLLD.com)

[mineralshowsll@gmail.com](mailto:mineralshowsll@gmail.com)



**SDMG BOARD MEETING HIGHLIGHTS****May 20, 2024**

*This meeting was conducted via GoToMeeting, and was called to order at 7:07 p.m. by President David Smith.*

**Present electronically:** President David Smith and Board members LuAnn Benton, Bill Brisebois, Mark Herman, Yvonne Juarez, John Kruzal, Jim Parrish, Itziar Parramon, Ellen Riceman, Nita Sani, Anne Schafer, Larry Shute, Tim Swann, Paul Williams, and Rich Yarbrough. A quorum was present. **Absent:** Doug Peeler and Dave Rose. **Guests:** Cathy Davis, Lisbet Thoresen, and Brendan White.

**President's report:** David Smith reported that a new cash drawer is needed in the shop.

**Membership:** Angie Cannon reported a total SDMG membership of 661, including 57 Juniors.

**City Liaison:** Jim Parrish to check with City to make sure that all necessary documents have been submitted with regards to the renewal of SDMG's Special Use Permit. He will also contact the City about replacement of worn exterior doors.

**Juniors:** The Juniors Saturday class is now split into two areas, with half the Juniors in Cab Class and the other half in the Wire Wrap Class held in the Faceting Room.

**Mineral Division:** Meetings will resume in October and will be held every other month on the first Monday night of that month.

**Gemological Division:** Meetings will resume in the Fall. More information will be published in the September bulletin. Meetings will be held bimonthly on the first Monday night of the month, alternating with the Mineral Division.

**School Director:** Dave Smith installed new lock washers to secure Covington sanding unit hoods to their bases. Tim Swann reported still finding loose bolts at the start of his class and suggested trying nylon interlocking nuts. Another idea was to have a secondary safety steel lanyard to prevent a loosened hood from flying very far. Also suggested was redoing the hood attachment points to have a hole rather than a slot.

Every student is required to sign the general liability release form and read the school rules. Said rules to be posted in the classrooms.

Paul Williams fixed the trim saw on Saturday. He also fixed the slab saw whose belt had come off the pulley.

Bill Brisebois received an order of standard faceting dops; plans to order one more of each type of steel lap in the Fall.

Yvonne Juarez to send out email on June 1st to see which instructors will be offering a summer class.

**Donations:** Jim Parrish is working on a book donation from SDMG member who is moving.

**Public Lands:** BLM to have final plan for Mojave Trails by summer; have skipped the usual process steps, regrettably.

**Bulletin/Enews:** Lisbet Thoresen sent sample ballot to Nominating Committee Chair LuAnn Benton for approval. First Eblast of ballot scheduled for launch on May 28th. End of voting period to be June 17th.

**Gem Diego:** LuAnn Benton reported that Patricia Andrews will be the Advertising Chair. Laminated flyers have been prepared, both for display at the Fair and at SDMG.

**Cab 'n' Slab:** Anne Schafer reported the next sale will be held on a Sunday in April 2025, date TBD, but time the same as always, 9 am to noon.

**S.D. County Fair:** Anne Schafer asked Board meeting attendees to consider signing up to do demos in the Gems & Minerals Dept. this year.

**Unfinished Business:** None.

**New Business:** After discussion, motion carried 12 to 1 to designate Bonnie Zeranski as the primary contact for Village Silversmiths until the existing agreement is rewritten and approved by the Board. Jim Parrish and Paul Williams were appointed to rewrite the agreement.

*(Any member may attend Board meetings. The next one is scheduled for June 17, 2024, at 7 p.m. and will be held via GoToMeeting. Please contact Jim Parrish at [curator.sdmg@gmail.com](mailto:curator.sdmg@gmail.com) to be added to the attendance list.)*





# KRISTALLE

Est. 1971

*Wayne and Dona Leicht*

WE ARE CASH BUYERS FOR SINGLE SPECIMENS AND ENTIRE COLLECTIONS!

875 North Pacific Coast Highway - Laguna Beach, CA 92651

949.494.5155 - fax: 949.494.0402

e-mail: [info@kristalle.com](mailto:info@kristalle.com)



# **Thomas M. Schneider Quality Gemstones**



**861 6th Avenue, Suite 517**

**San Diego, CA 92101**

**[www.tmsgems.com](http://www.tmsgems.com)**







**Ph: 619-232-2624**

**Fax: 619-232-2213**

# Rock&Gem AFMS SUBSCRIPTION SPECIAL

Support the AFMS with your subscription/renewal to Rock&Gem

## FEATURED in Rock&Gem:

-  Must-see digging destinations
-  Inspiring stories about people who dig, collect and create
-  Rock & Gem Kids for the young and young-at-heart
-  Expert insights about general lapidary techniques
-  Identification guides
-  Step-by-step projects



SAVE

**61%** on a Rock&Gem print magazine subscription.



SCAN TO  
SUBSCRIBE/RENEW

Fill out the order form below and mail it, along with your payment information, to:

**EG Media Investments LLC, PO Box 74660, Chicago IL 60675-4660**

Rock & Gem ☐ 1 Year (12 issues) at \$39.95 ☐ 2 Year (24 issues) at \$64.95

Method of Payment: ☐ Payment Enclosed ☐ Credit Card  
(Payable to EG Media Investments LLC)

Name on Credit Card \_\_\_\_\_

Credit Card No                 Valid Thru  MM  /  YY

Subscriber Name \_\_\_\_\_

Address \_\_\_\_\_

City \_\_\_\_\_ State \_\_\_\_\_ ZIP \_\_\_\_\_

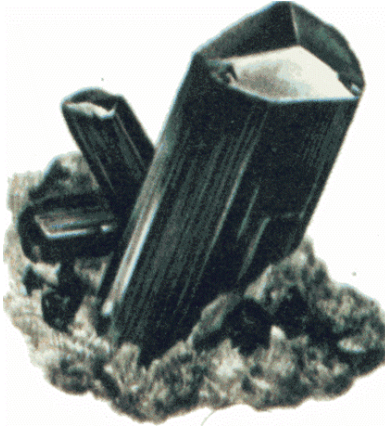
Email \_\_\_\_\_ Phone No \_\_\_\_\_

Signature \_\_\_\_\_

P  
7  
3  
R  
N  
G  
O  
1

Order online at: [www.rockngem.com/afms](http://www.rockngem.com/afms)





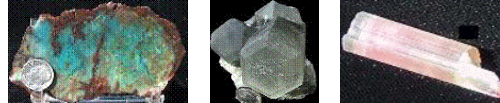
## MinersGallery.com

Rock Slabs, Bulk rock, Crystals, Jewelry,  
Fossils, Gems and Petrified Wood.

Phone: (619) 445-0800

[richard@minersgallery.com](mailto:richard@minersgallery.com)

[www.minersgallery.com](http://www.minersgallery.com)



Minerals and crystals from around the world

\* ROCKS \* MINERALS \* GEMS \* JEWELRY MAKINGS \*

\* LARGEST INVENTORY \*

\*\* BEST QUALITY \*\*

\* LOWEST PRICES \*

\* NEW ARRIVALS DAILY \*

## SOUTH AMERICAN IMPORTS

Direct Importers

2461 San Diego Ave. #104

San Diego, CA 92110

In Old Town, in Coyote Café Shopping Center

Tel: (619) 299-3877

OPEN EVERY DAY!

# Village Silversmiths

**Bead Work  
Jewelry  
Slabs**

**1770 Village Place  
Balboa Park  
San Diego, CA 92010  
619 239-8812**

**Carvings  
Rocks  
Cabs**



Our business is putting fun and pride  
into your lapidary hobby or profession  
by making the right tools for your needs

## Astounding Selection of Minerals & Fossils from Around the Globe



## **MINERS GEMS**

Experts in Geology, Gemology & Paleontology

World Famous Gold Rush  
Rock Shop & Mining Museum

Daily Mineral Panning and Geode Cutting

Educational Programs Available

In Old Town San Diego State Historic Park  
2616 San Diego Avenue, San Diego CA 92110  
619-688-1178

[minersgemsandminerals@cox.net](mailto:minersgemsandminerals@cox.net)  
[www.minersgemsandminerals.com](http://www.minersgemsandminerals.com)



# San Diego Mineral & Gem Society

A Non-Profit Educational and Scientific Organization

## WINTER/SPRING 2024 WORKSHOP SCHEDULE

January 7 – June 29, 2024 (updated 4/30/2024)

**Signing up for classes:** Prospective students must contact the instructor prior to attending a workshop; click on the instructor's name in the schedule below to send an email message. (If you have trouble with the links, please email [school@sdmg.org](mailto:school@sdmg.org), we'd be happy to help facilitate contact with an instructor.)

**Class fees:** **Adults:** \$6 per 3-hour class. \$8 per class if longer than 3 hours. **Juniors:** \$1 per class. Cash or checks only, please. Instructors may require prepayment of class fees per class, month, or semester.

✓ Classes are open to SDMG members only: Sign up or renew membership at:

<https://sdmg.org/sdmg-membership/> – Or – in person during Society hours.

✓ Students must read and follow the School Rules, available in the classroom and online at::

<https://sdmg.org/class-schedule/school-rules.pdf>

<u>CABOCHONS</u>	Mon	6:00 pm – 9:00 pm	<a href="#">Mark Herman</a>
	Tue	6:00 pm – 9:00 pm	<a href="#">Steve Wright</a>
	Wed	9:00 am – 11:30 am	<a href="#">Itziar Parramon</a>
	Wed	12:30 pm – 3:30 pm	<a href="#">Lex Wright</a>
	Wed	6:00 pm – 9:00 pm	<a href="#">Nita Sani</a>
	Thu	9:00 am – 12:00 pm	<a href="#">John Kruzel</a>
	Thu	6:00 pm – 9:00 pm	<a href="#">Paul Sichak</a>
	Fri	6:00 pm – 9:00 pm	<a href="#">Jon Evans</a>
<u>FACETING</u>	Wed	9:00 am – 12:00 pm	<a href="#">Mike Harkelroad</a>
	Wed	12:00 pm – 3:00 pm	<a href="#">Mike Harkelroad</a>
	Thu	6:00 pm – 9:00 pm	<a href="#">Bill Brisebois</a>
<u>BEG. METALS FABRICATION</u>	Mon	6:00 pm – 9:00 pm	<a href="#">Tim Swann</a>
	Wed	6:00 pm – 9:00 pm	<a href="#">Tim Swann</a>
	Thu	9:00 am – 12:00 pm	<a href="#">Bud Green</a>
	Thu	1:00 pm – 4:00 pm *	<a href="#">Miriam Larson</a>
<u>INT. METALS FABRICATION</u>	Tue	4:00 pm – 7:00 pm	<a href="#">Yvonne Juarez</a>
<u>ADV. METALS FABRICATION</u>	Wed	9:00 am – 3:00 pm	<a href="#">Denny Turner</a>
	Wed	9:00 am – 3:00 pm	<a href="#">Jackie Leverone</a>
	Thu	1:00 pm – 4:00 pm	<a href="#">Denny Turner &amp; Tim Swann</a>
	Thu	7:00 pm – 9:00 pm	<a href="#">Ellen Riceman</a>
	Fri	9:00 am – 3:00 pm	<a href="#">Miriam Larson</a>
<u>CASTING</u>	Tue	9:00 am – 2:00 pm	<a href="#">Dave Smith</a>
	Thu	7:00 pm – 9:00 pm	<a href="#">Rich Yarborough</a>
<u>ROCK CARVING</u>	Mon	9:00 am – 12:00 pm	<a href="#">LuAnn Benton</a>
<u>SPHERE MAKING</u>	Sat	1:00 pm – 4:00 pm	<a href="#">Paul Williams</a>
<u>JUNIORS</u>	Sat	9:30 am – 12:30 pm	<a href="#">Dave Smith</a>

\* This class meets in the library



**San Diego Mineral & Gem Society**  
A Non-Profit Educational and Scientific Organization

**SUMMER 2024 WORKSHOP SCHEDULE**  
**July 8 – August 31, 2024** (updated 5/28/2024)

**Signing up for classes:** Prospective students must contact the instructor prior to attending a workshop; click on the instructor's name in the schedule below to send an email message. (If you have trouble with the links, please email [school@sdmg.org](mailto:school@sdmg.org), we'd be happy to help facilitate contact with an instructor.)

**Class fees:** **Adults:** \$6 per 3-hour class. \$8 per class if longer than 3 hours. **Juniors:** \$1 per class. Cash or checks only, please. Instructors may require prepayment of class fees per class, month, or semester.

✓ Classes are open to SDMG members only: Sign up or renew membership at:  
<https://sdmg.org/sdmg-membership/> – Or – in person during Society hours.

✓ Students must read and follow the School Rules, available in the classroom and online at:  
<https://sdmg.org/class-schedule/school-rules.pdf>

<u>CABOCHONS</u>	Mon	6:00 pm – 9:00 pm	<a href="#">Mark Herman</a>
	Tue	6:00 pm – 9:00 pm	<a href="#">Steve Wright</a>
	Wed	9:00 am – 11:30 am	<a href="#">Anne Welch</a>
	Wed	6:00 pm – 9:00 pm	<a href="#">Nita Sani</a>
	Thu	6:00 pm – 9:00 pm	<a href="#">Paul Sichak</a>
	Fri	6:00 pm – 9:00 pm	<a href="#">Daniel Wood</a>
<u>FACETING</u>	Thu	6:00 pm – 9:00 pm	<a href="#">Bill Brisebois / Sandy Hively</a>
<u>BEG. METALS FABRICATION</u>	Mon	6:00 pm – 9:00 pm	<a href="#">Tim Swann</a>
	Wed	6:00 pm – 9:00 pm	<a href="#">Tim Swann</a>
	Thu	9:00 am – 12:00 pm	<a href="#">Bud Green</a>
	Thu	1:00 pm – 4:00 pm *	<a href="#">Miriam Larson</a>
<u>INT. METALS FABRICATION</u>	Tue	3:00 pm – 6:00 pm	<a href="#">Yvonne Juarez</a>
<u>ADV. METALS FABRICATION</u>	Wed	9:00 am – 3:00 pm	<a href="#">Denny Turner</a>
	Wed	9:00 am – 3:00 pm	<a href="#">Jackie Leverone</a>
	Thu	1:00 pm – 4:00 pm	<a href="#">Denny Turner &amp; Tim Swann</a>
	Thu	7:00 pm – 9:00 pm	<a href="#">Ellen Riceman</a>
	Fri	9:00 am – 3:00 pm	<a href="#">Miriam Larson</a>
<u>CASTING</u> Resumes end of July	Thu	7:00 pm – 9:00 pm	<a href="#">Rich Yarborough</a>
<u>SPHERE MAKING</u>	Sat	1:00 pm – 4:00 pm	<a href="#">Paul Williams</a>
<u>JUNIORS</u>	Sat	9:30 am – 12:30 pm	<a href="#">Dave Smith</a>

\* This class meets in the library



**SAN DIEGO MINERAL & GEM SOCIETY**  
**Board of Directors & Special Assignments (Non-board members)**  
7/1/2022 – 6/30/2024

**OFFICERS**



**Dave Smith**  
President, Junior Coordinator,  
Casting Lead  
[president@sdmg.org](mailto:president@sdmg.org)



**LuAnn Benton**  
Vice President, Friendship-  
Historian,  
Gem Diego Chair  
[friendship@sdmg.org](mailto:friendship@sdmg.org)



**Ellen Riceman**  
Secretary



**Anne Schafer**  
Treasurer, Cab'n'Slab Chair,  
Donations Chair

**DIRECTORS**



**Bill Brisebois**  
Faceting Lead (1 of 2)



**Mark Herman**



**Yvonne Juarez**  
Workshop Schedule,  
Silver Lead  
[admin@sdmg.org](mailto:admin@sdmg.org),  
[school@sdmg.org](mailto:school@sdmg.org)



**Vacant**  
**Christmas Potluck Chair**



**Vacant**  
Asst. Shop Director



**John Kruzel**  
Cabbing Lead (1 of 2)



**Jim Parrish**  
Mineral Div. Chair, Museum  
Curator, City Liaison,  
December Nights Chair



**Itziar Parramon**

## DIRECTORS



**Doug Peeler**  
BBQ Chair



**Dave Rose**



**Nita Sani**



**Larry Shute**



**Rich Yarbrough**  
Shop Director



**Tim Swann**



**Paul Williams**  
Cabbie Lead (2 of 2)

## SPECIAL ASSIGNMENTS



**Lisbet Thoresen**  
Bulletin Editor, Webmistress,  
Public Lands Representative  
[editor@sdmg.org](mailto:editor@sdmg.org)



**Angie Cannon**  
Membership Secretary,  
Badges Chair



**Mike Frye**  
Building Superintendent



**Mike Harkelroad**  
Faceting Lead (2 of 2)

## SPECIAL ASSIGNMENTS



**Jackie Leverone**  
Advanced Metals Lead



**Marcus Origlieri**  
Scholarships Chair

**Vacant Positions:** Banquet Chair, CFMS  
Representative, Auditor, Librarian

**\*\* Please use [info@sdmg.org](mailto:info@sdmg.org) to contact  
anyone without an email address shown above \*\***

*A number after a name means there is more than  
one contact person for a position,  
e.g., Bill Brisebois, Faceting Lead (1 of 2).*

## JOHN E. GARSOW gems & minerals

June 8 & 9, 2024  
Palomar Gem & Mineral Show  
Escondido, CA  
California Center for The Arts  
Saturday 10 AM – 5 PM  
Sunday 10 AM – 4 PM

Facet Rough • Cabbing Rough  
Jewelry • Mineral Specimens

[www.johngarsow.com](http://www.johngarsow.com)



## CLASSIFIED ADS

OCEANVIEW MINE  
TOUR & SCREENING TRIPS:  
**CALL FOR CURRENT SCHEDULE**

For more information  
please visit [digforgems.com](http://digforgems.com)

or email [digforgems@gmail.com](mailto:digforgems@gmail.com)  
Reservations required.

\$75. Adults    \$60. Children (ages 5 to 11)  
Family rates available.

HIMALAYA MINE TAILINGS:  
**CALL FOR SCHEDULE/HOURS OF OPERATION**

At the Lake Henshaw Resort on Highway 76.  
The operation is closed currently,  
but buckets are available.

Call (775) 830-5797  
or (775) 772-7724 for more info

[www.highdesertgemsandminerals.com](http://www.highdesertgemsandminerals.com)

## WEBSITES

SDMG: [sdmg.org](http://sdmg.org)

CFMS: [cfmsinc.org](http://cfmsinc.org)

AFMS: [www.amfed.org](http://www.amfed.org)

PUBLIC LANDS: [www.amlands.org](http://www.amlands.org)

BLM: [www.blm.gov/california](http://www.blm.gov/california)

BOB'S ROCK SHOP: [www.rockhounds.com](http://www.rockhounds.com)

## MUSEUMS:

[www.sdnhm.org](http://www.sdnhm.org)

[nhm.org](http://nhm.org)

[www.amnh.org](http://www.amnh.org)

[naturalhistory.si.edu](http://naturalhistory.si.edu)

[www.gia.edu](http://www.gia.edu)





# San Diego Mineral & Gem Society

A Non-Profit Educational and Scientific Organization

1770 Village Place, Balboa Park

San Diego, CA 92101-1651

[sdmg.org](http://sdmg.org)

## WELCOME!

The SDMG Building  
is located  
at the north end of  
Spanish Village  
in Balboa Park

SDMG Museum hours:  
11:00am to 4:00pm

Get information  
on classes, events,  
field trips, reports,  
reviews, slideshows  
and more at:

[sdmg.org](http://sdmg.org)

## ADDRESS SERVICE REQUESTED



## THE PEGMATITE – JUNE 2024

Sun	Mon	Tue	Wed	Thu	Fri	Sat
26	27	28	29	30	31	1  Deliver Entries
2  Deliver Entries	3 GSSD General Mtg 7pm, SDMG Bldg	4	5	6	7	8
9	10	11	12  Opening Day	13	14	15
16	17 	18	19	20	21	22
23 / 30	24 	25	26	27	28	29